




INSTALLATION INSTRUCTION - INSTRUCCIONES DE INSTALACIÓN INSTALLING ROTO COVER AND CRANK AND LOCK LEVER INSTALACIÓN DE LA CUBIERTA Y LA MANIVELA Y LA PALANCA DE CERRADURA

TOOLS REQUIRED:

- Medium sized flat-blade screwdriver 
- #1 Phillips screwdriver 
- Small flat-blade screwdriver 

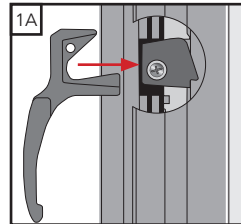
Note: Allow any window finish to dry before proceeding with installation instructions. (To open the window for finishing, utilize included construction hardware or partially insert the lock handle into the jamb, unlock the unit, temporarily attach the crank handle and turn to open.)

1 LOCK LEVER INSTALLATION AND REMOVAL

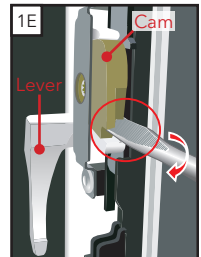
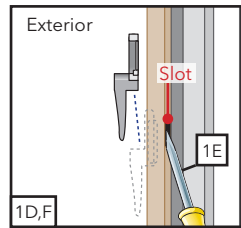
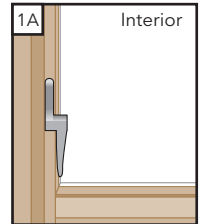
- To install lock lever**, make sure the cam is fully rotated into the locked position, hold the lock lever in the lock position and insert it, from the interior, into the slot until it snaps into the cam.
- To remove a lock lever**, unlock by rotating the lock lever up and cranking the window open.
- With the window open**, rotate the lock lever back into the locked position.
- From the exterior of the window**, locate the access slot between the frame stop and gasket and insert a medium flat-blade screwdriver between the cam and lock lever near the bottom of the opening.
- Push the screwdriver inwards** with a small amount of pressure; then turn the blade slightly clockwise for a left hand unit, counter-clockwise for a right hand units. **DO NOT** over-twist the screwdriver, this can damage the lock driver.

Note: Viewed from exterior, LH units (Shown) have the hinge on the left.

- While continuing to turn the screwdriver, **Remove the lock lever by pulling it toward the interior of the building.**



Interior Frame Cover cut-away view to show orientation of lock lever with cam in locked position.



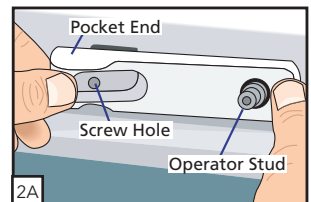
Interior Frame Cover removed to show location of lever and cam plus orientation of screwdriver between lever and cam.

2 ROTO COVER AND CRANK INSTALLATION

Note: For removal, perform actions below in reverse.

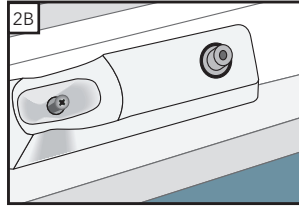
- Place the cover **over the operator stud** and (if applicable) **snap into place**. Position the pocket end of the cover into place.

Note: For Impervia products, if no screw hole exists in the frame, a 1/16" pilot hole must be drilled with the cover installed and using the cover screw hole (Shown in figure 2A) as a drill guide, before the screw is inserted.

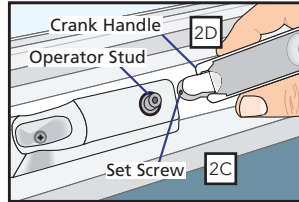


2 ROTO COVER AND CRANK INSTALLATION (CONTINUED)

- B. Insert the provided screw into the hole in the bottom of the pocket. Use a # 1 Phillips screwdriver to secure the pocket screw snug against the bottom of the pocket to avoid scratching the crank handle knob. DO NOT over tighten.



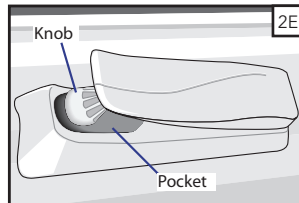
- C. Use a small size flat-blade screwdriver to loosen the set screw in the crank handle.
- D. Slide the crank handle onto the stud. To test, unlock, open window, then close and lock window.



- E. Fold the crank handle down and check alignment of knob with the pocket.

Note: You may need to adjust the crank position on the stud until the correct alignment is achieved.

Note: For Saldo hardware the knob must be folded in before closing crank.



- F. Open the crank and tighten the set screw.
- G. After the final installation, fold the crank over and snap the knob into the pocket.

Note: Even with the window open the crank can be folded to avoid interfering with the window treatments.