



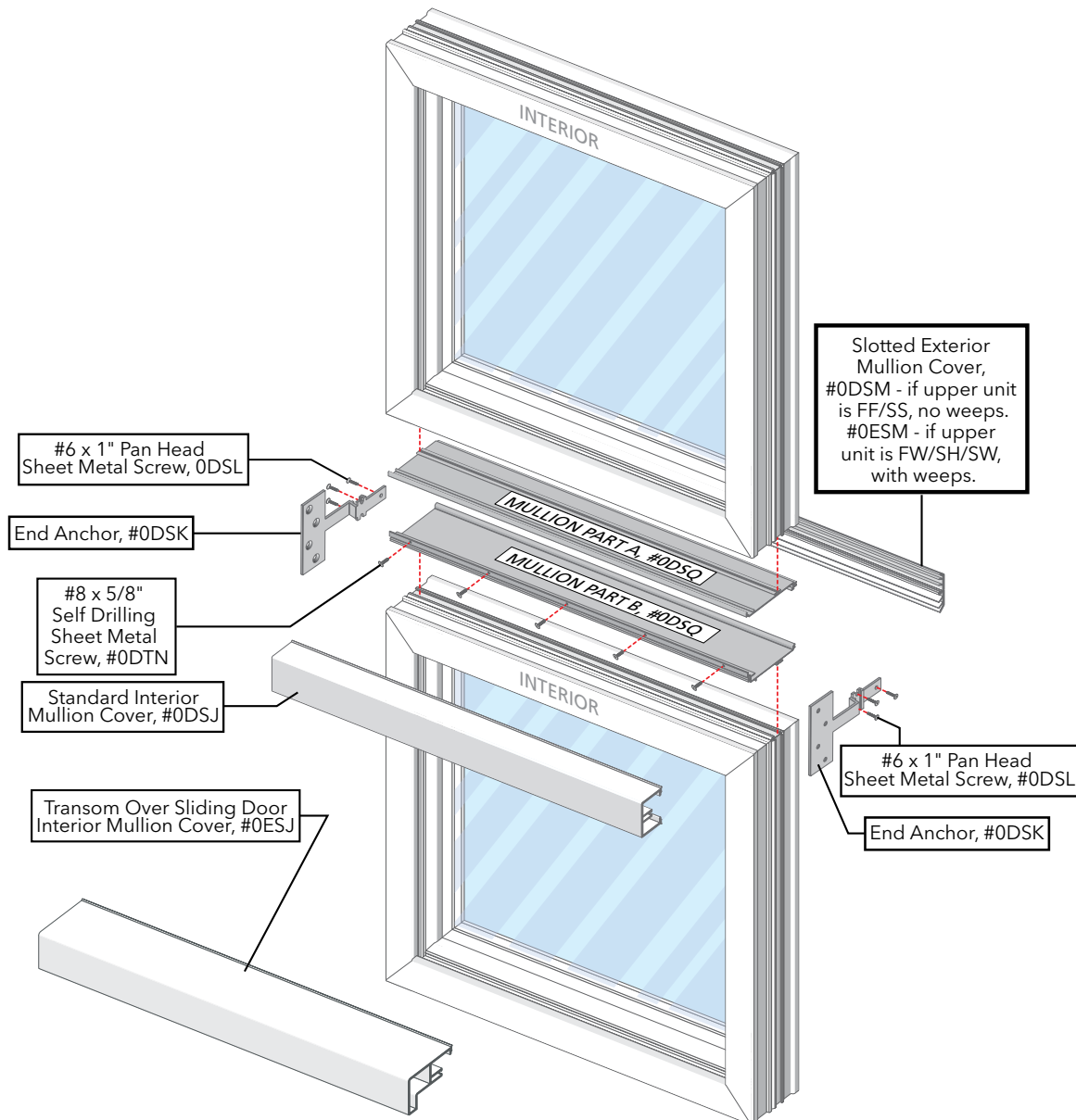
1/2" HORIZONTAL REINFORCING MULLION ASSEMBLY INSTRUCTIONS FOR TRANSOM WINDOWS OVER SLIDING DOOR

YOU WILL NEED THE FOLLOWING ITEMS:

- Tape measure
- Sharp chisel
- Drill
- Hack saw
- Rubber mallet
- Sealant gun
- Pella Window and Door Installation Sealant or equivalent high quality, multi-purpose sealant
- Mullion part A (1)
- Mullion part B (1)
- End anchor (2)
- Slotted exterior mullion cover (1)
- Standard interior mullion cover (1) or Transom over sliding door interior mullion cover (1)
- Installation fins (4)
- 1/4" x 3" stainless steel (300 SS) flat mullion reinforcement (Not required for all applications)
- #8 x 5/8" Self drilling sheet metal screws
- #6 x 1" Flat head sheet metal screws
- #8 x 2-1/2" Flat head corrosion resistant screws

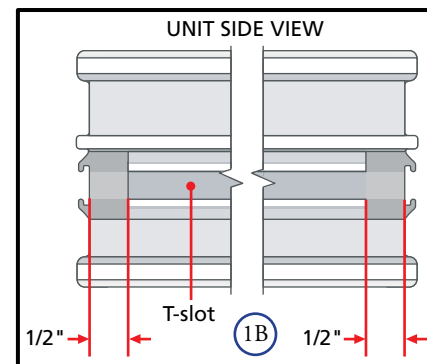
Assembly will require two or more persons for safety reasons.

NOTE: This mull system cannot be used with Casement/Awning/Fixed Casement/Double-Hung over a Door.



1 PREPARING THE UNITS

- A. Lay the units with the exterior side down on a smooth clean surface.
- B. Cut the legs of the T-slot groove off 1/2" from the top and bottom of each of the units being mulled together with a sharp chisel.
- C. Clean all debris from the T-slot.



2 PREPARING THE MULLION

- A. Cut mullion part A and B 3/4" shorter than the width of the units to be mulled.
- B. Cut the exterior mullion cover to the width of the unit frame.
- C. Cut the interior mullion cover 1-1/4" shorter than the unit frame width.
Note: The interior mullion may be cut to fit after the interior drywall or trim are installed and finished.
- D. Cut the stainless steel mullion reinforcement (if applicable) 1" shorter than the frame width of the windows to be mulled.

3 MULLING UNITS TOGETHER

Note: Perform this process before attaching fins or installation clips.

- A. Insert the legs of mullion part A into the T-slot groove at the bottom of the upper unit to be mulled with the interior side of part A facing the interior side of the unit.

Note: A rubber mallet may be used to slide the legs of the mullion into the T-slot groove of the unit.

- B. Insert the legs of mullion part B into the T-slot groove at the top of the lower unit to be mulled with the interior side of part B facing the interior side of the unit.

Note: A rubber mallet may be used to to slide the legs of the mullion into the T-slot groove of the unit.

- C. Center the mullion parts A and B on the unit sides, leaving a 3/8" space between the end of the mullion part and the corner of each unit.

- D. Slide the units together, lifting up on the unit with mullion part B to allow it to interlock with mullion part A on the other unit. Position and align the second unit with the first unit.

- E. Drive a #8 x 5/8" self drilling sheet metal screw through mullion part B and into mullion part A. This will secure the two mullion parts together. Position a screw 4" from each end. Install additional screws so that there is not more than 16" between screws.

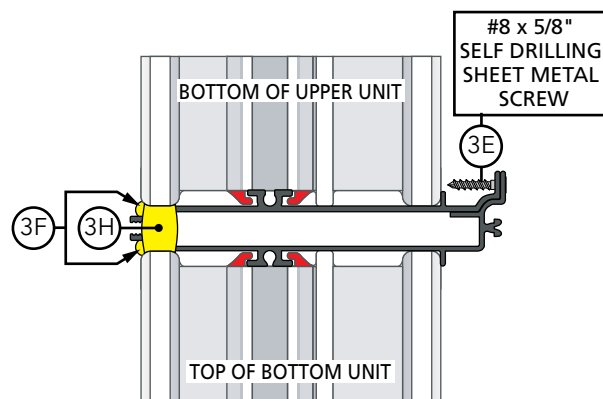
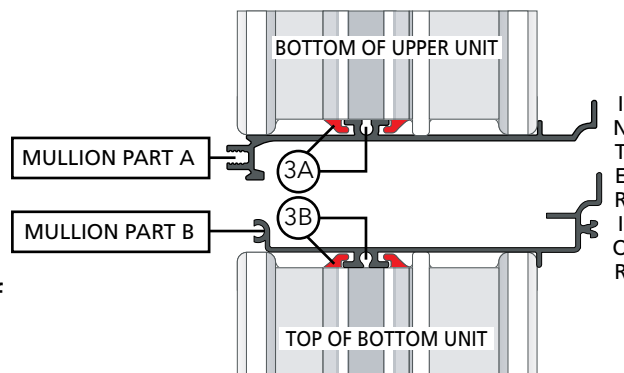
Note: Quick grip clamps may be used to help draw the units together prior to installing the screws.

Note: If using 1/4" x 3" stainless steel mullion reinforcement, slide the reinforcement into the space between mullion part A and mullion part B before proceeding to the next step.

- F. Fill the space between the exterior of the window frames and the mullions with sealant.
- G. Align the exterior mullion cover with the top and bottom sides of the units and snap onto the unit frames.

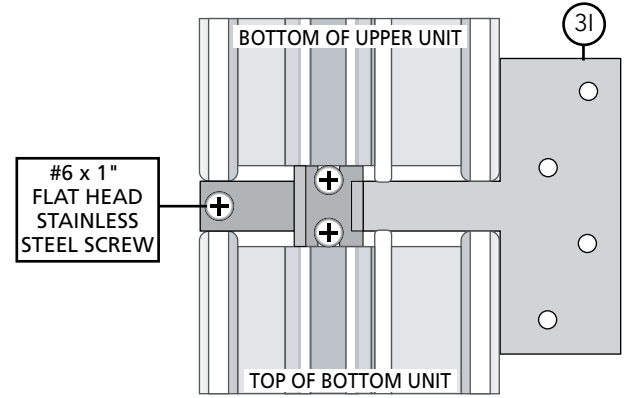
Note: Ensure the weep slots are in the top half of the mullion cover.

- H. Place a bead of sealant on the ends of the mullion reinforcement, connecting sealant beads from Step F, and covering the screwboss in the end of the reinforcement.



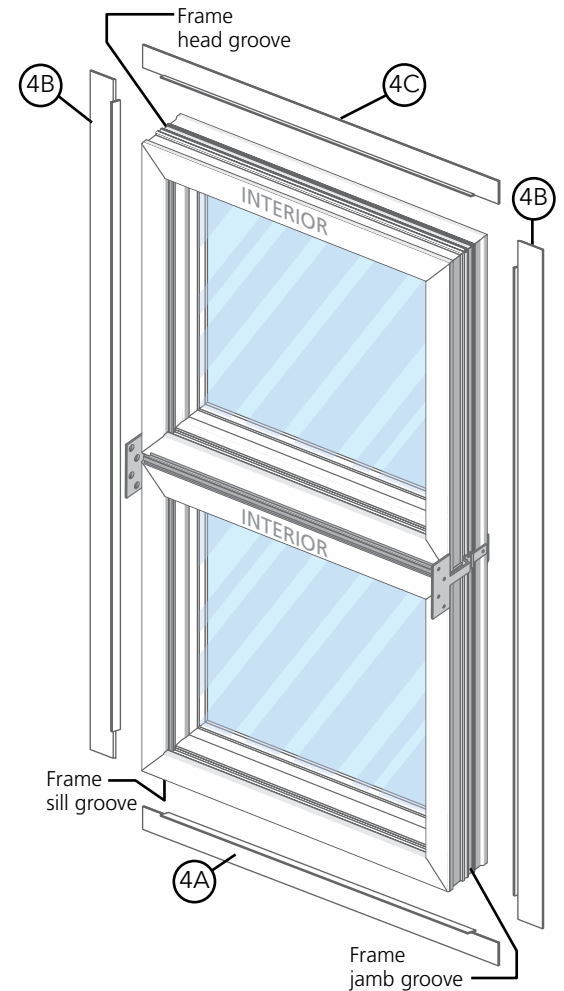
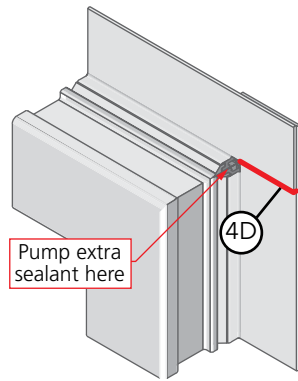
3 MULLING UNITS TOGETHER

- I. Place one end anchor at each end of the mullion and fasten in place using three #6 x 1" flat head stainless steel screws.



4 APPLYING INSTALLATION FINIS

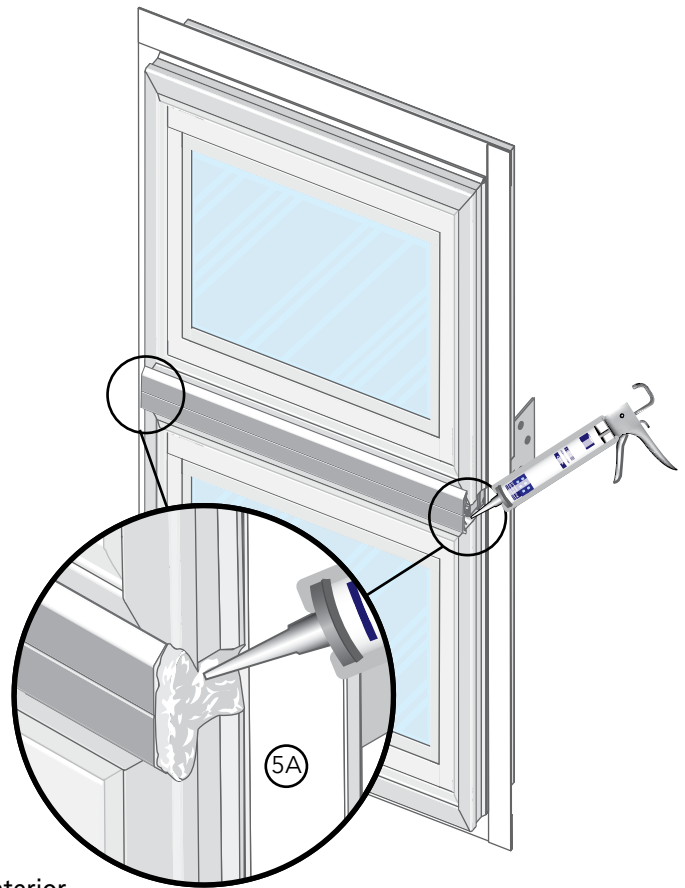
- A. Slide the bottom fin into the frame sill groove located on the bottom unit frame member.
- B. Install the two side fins into the top of the frame jamb grooves located on the side frame members of the unit. Slide the fins into place.
Note: The side fins must overlap the exterior of the bottom fin.
- C. Install and slide the top fin into the frame head groove located in the top frame member.
Note: The top fin must overlap the exterior of the side fins.
- D. Apply a bead of sealant at the overlapping fin joints, ensuring the sealant fills the small hole between the frame corner and the fins.



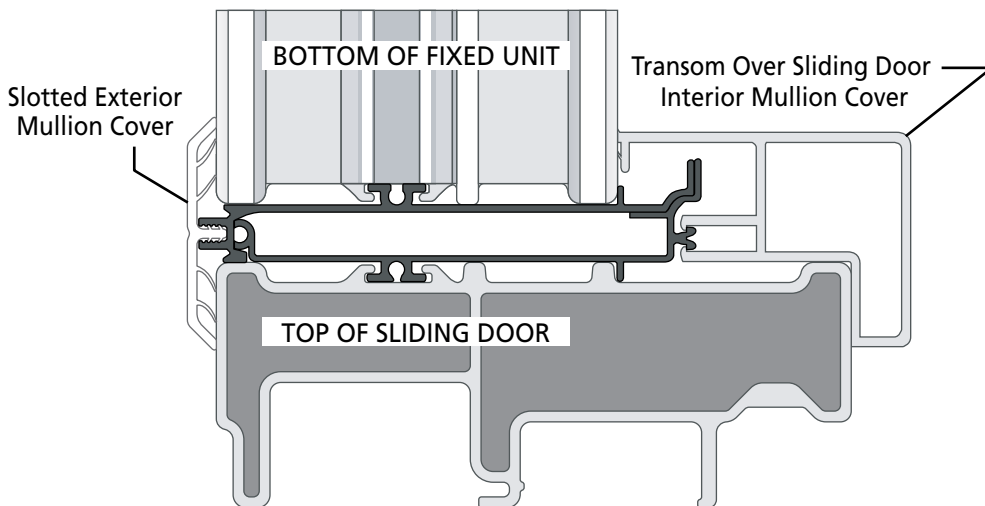
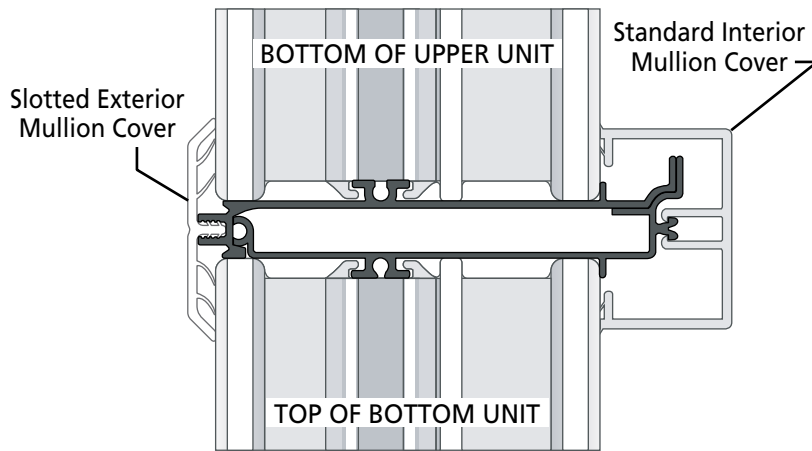
5 COMPLETING THE MULLED UNITS

- A. Fill the end of each mullion joint with sealant between the fin and the exterior mullion cover. The ends of the exterior mullion cover must also be filled flush to the end.
- B. After installing the unit per the standard installation instructions, place shims between the mullion end anchors and the rough opening.
- C. Attach the end anchor to the opening by driving a #8 x 2-1/2" flat head corrosion resistant screw into each hole of the end anchor mounting plate.
- D. Center the interior mullion cover and snap onto the unit frames.

Note: Check the position of the interior mullion cover before snapping it onto the mullion reinforcement. Once it is snapped into position it will be difficult to remove.



DETAILED VIEWS



80LX0101