



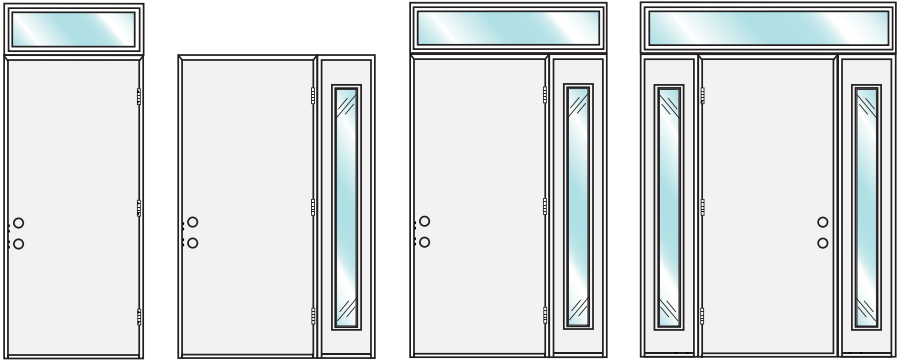
INSTALLATION INSTRUCTIONS - INSTRUCCIONES DE INSTALACION ENTRY DOOR MULLION KIT

Important!

Performance requirements may vary by regions and local codes, consult www.pellaadm.com or your local Pella retailer for combination size limitations. DO NOT join multiple windows over door(s).

Note: These instructions apply to the following mullion situations:

- Single Transom over 1-wide (Single door)
- Single Transom over 2-wide (Single door & sidelight)
- Single Transom over 3-wide (Single door flanked by 2 sidelights) or mulling a Circlehead over a door.
- Single Door mullied to a sidelight.



YOU WILL NEED TO SUPPLY:

- Pella® SmartFlash™ foil backed butyl window and door flashing tape or equivalent
- Pella Window and Door Installation Sealant or equivalent high quality, multi-purpose sealant
- #8 x 1-1/4" corrosion resistant flat head screws (9)

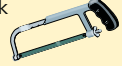


MULLION KIT CONTENTS:

- Butyl triangles (12)
- Exterior mullion cover
- Interior mullion cover
- Mullion plates (2)
- Plate screws (24)

TOOLS REQUIRED:

- Tape measure
- Hammer or rubber mallet
- Wood block
- Hacksaw
- Drill with 3/32" drill bit
- #2 Phillips screwdriver
- Pliers
- Tin snips
- Quick grip clamps
- Pry bar



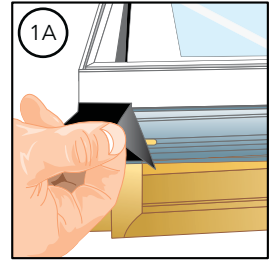
REMEMBER TO USE APPROPRIATE PERSONAL PROTECTIVE EQUIPMENT.

Note: If the products to be mullied have fins on the surfaces to be mullied, they must be removed prior to mulling products together.

1 REMOVING THE INSTALLATION FIN

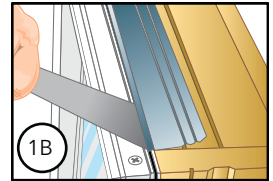
- A. Remove the flexible fin corners from the joining sides of the two windows to be mull together.

Note: Two fin corners per product will be removed.

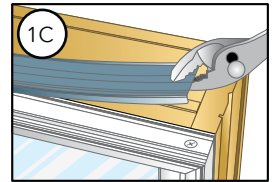


- B. Place the flat end of a pry bar against the front edge of the fin. Strike the pry bar with a hammer and pry up.

Note: Remove only the fin from the surfaces to be mull.



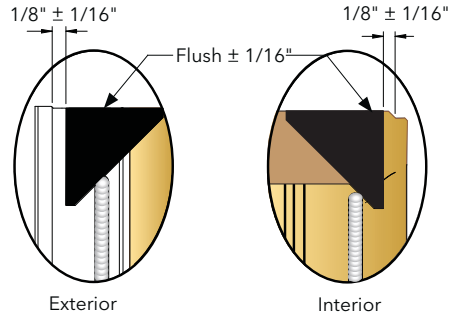
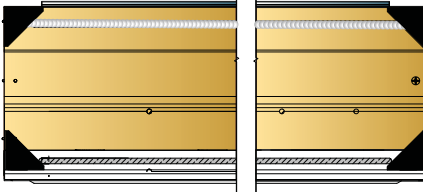
- C. Grasp the end of the fin with pliers or vise grips and pull up on the end of the fin. Continue pulling up along the full length of the fin until it is completely removed from the product.



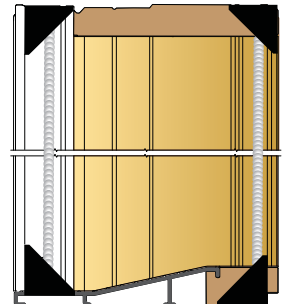
2 POSITION BUTYL TRIANGLES

- A. Place 4 butyl triangles onto one of the two products. Position them on each end of the mull, orient as shown.

Horizontal Mullion: Triangle and sealant bead placement



Vertical Mullion: Triangle and sealant bead placement



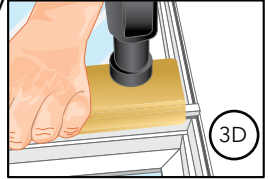
- B. Place a 3/8" sealant bead along the fin groove, beginning at the approximate midpoint of the triangle. Continue along the fin groove to the opposite corner of the product. Place another 3/8" sealant bead 9/16" from the interior bead running bead from butyl triangle to butyl triangle.

3 MULLING THE PRODUCTS TOGETHER

- A. **Measure the frame dimension** of the surface to be mullied when using lineal mullion covers. Using a hacksaw, cut the mullion covers $3/8"$ shorter than the frame dimension.
- B. **Place the products, exterior (clad) side up** on a clean flat surface.
- C. **Align the two products** and squeeze or clamp tightly together.

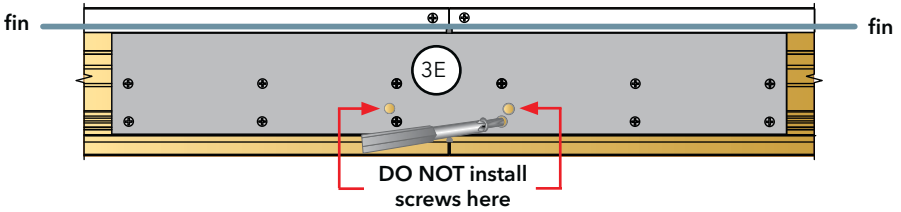
Note: Use quick grip clamps to bring the frames together.

- D. **Insert the end of the exterior mullion cover into the accessory groove** of both products. Tap the end into the groove with a rubber mallet. Drive the mullion cover into position with a rubber mallet or a rounded wood block and hammer.



- E. **Attach a gusset plate** at the end of each mullion joint. Fold up the nailing fin to 90° and position and secure the plate in place using six #8 x $1/2"$ flat head wood screws (provided) for each gusset plate.

Vertical Mullion Note: When mulling a sidelight to an entry door, no gusset plate is required at the sill.

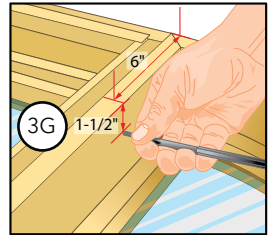


- F. **Turn the products over carefully**, making sure the products stay together.

Note: When turning doors over, lift at the head and not the jambs. Make sure the door panel is latched shut.

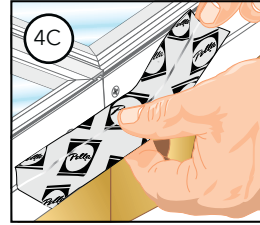
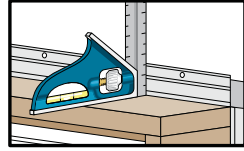
- G. **Secure the interior of the units;** Pre-drill $3/32"$ pilot holes $1"$ deep and drive #8 x $1-1/4"$ flat head corrosion resistant screws, $1-1/2"$ from the interior edge and $6"$ from each side of the frame (for transoms) or each end of the jamb (for sidelights) of the units and $12"$ on center between each screw.

DO NOT USE A SCREW LONGER THAN $1-1/4"$ OR DAMAGE MAY OCCUR



4 PLACE FLASHING TAPE OVER INSTALLATION FIN SEAMS

- A. Fold fins on both units out to 90°.
- B. Cut a 12" piece of flashing tape.
- C. Apply flashing tape over fin splice extending 1/2" onto frame cladding and wrapped onto back surface of nail fin.
- D. Press the tape down firmly over the entire surface to activate the adhesive and ensure a good seal.



If Mulling a Circlehead Over a Door:

- E. Fold out the Circlehead flexible fin until it snaps into position.
- F. Fold out the installation fins of the lower door to at least 90 degrees, aligning with the Circlehead flexible fin.
- G. Cut two 1-3/8" long pieces of flashing tape. Remove the paper backing and apply the flashing tape over the gaps between the Circlehead flexible fin and the rectangular door fins on both sides of the combination assembly.
- H. Apply a 3/8" diameter bead of sealant between the flashing tape and the edge of the window as shown.
- I. Install the combination as described in the installation instructions. Save the wood interior mullion cover for later use when applying interior trim material.

