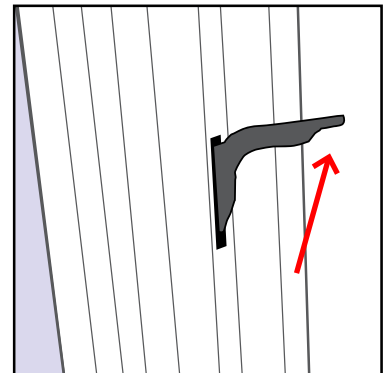




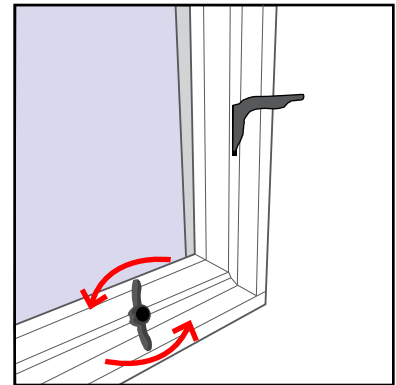
Construction Lock Lever Removal for Awning/Casement Alternate Method

Service Instruction

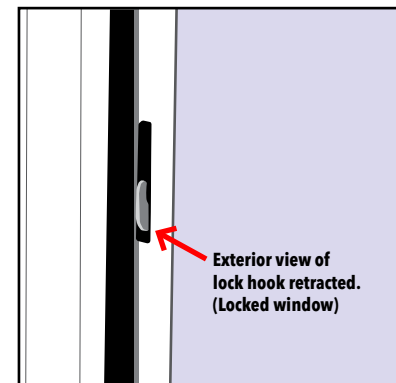
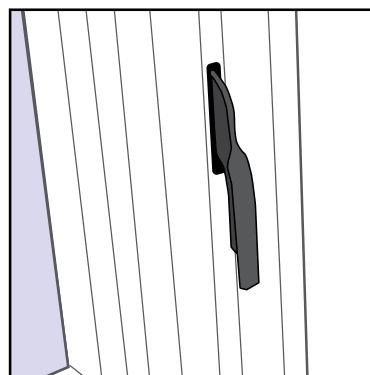
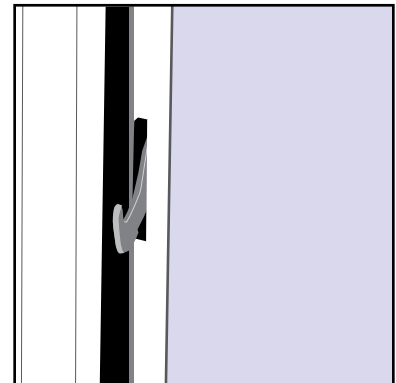
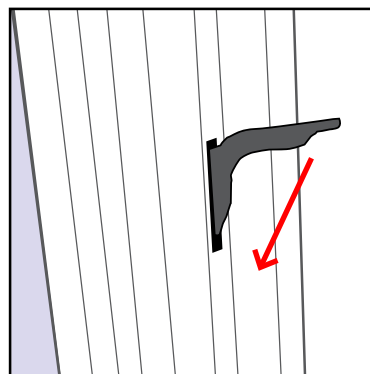
A. Lift construction lever up to unlock window.



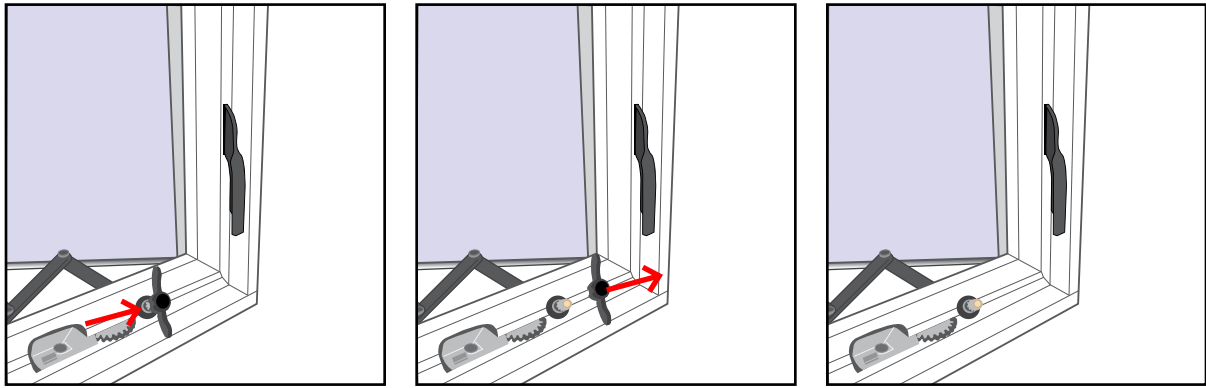
B. Turn construction wing nut crank to open sash.



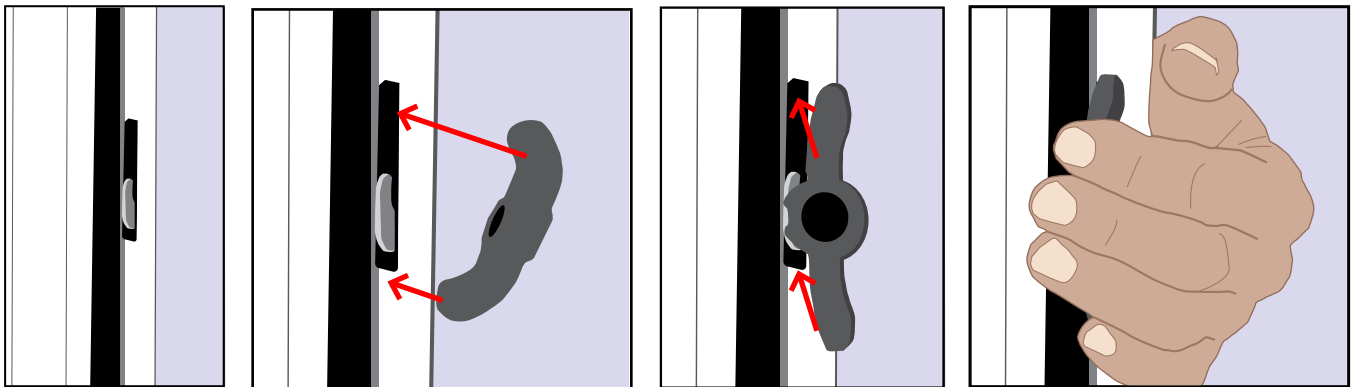
C. Place construction lock lever into "locked" position to pull lock hook(s) into frame.



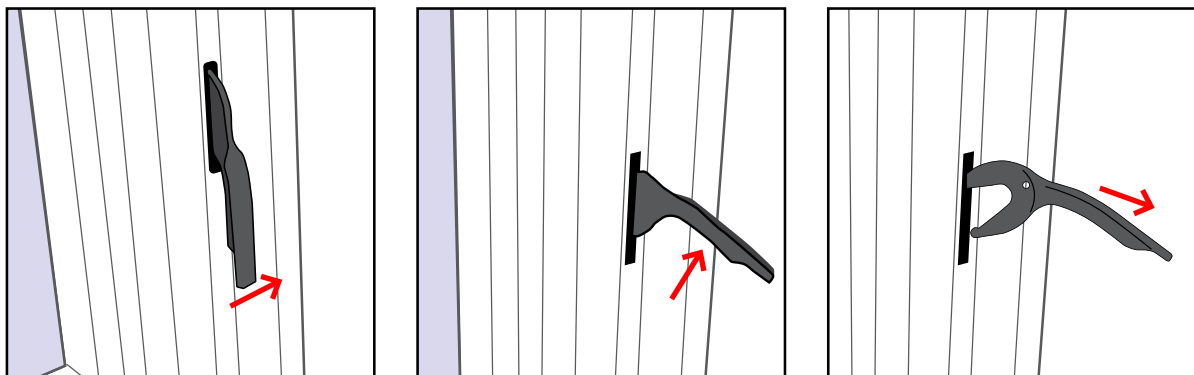
D. Pull construction crank to remove.



E. Position and hold the wing nut construction crank over a lock hook.



F. While holding the wing nut against the lock hook, raise the lock lever up. When the lever nears the fully unlocked position, there may be a bit of resistance, continue through the resistance and pull the lever up and out from the frame.



G. If the new hardware lock lever is not able to be inserted, Re-align the locking cam. Partially insert the construction lever, (DO NOT push it in too far so it clicks over the locking cam, rotate the lever down to change the position of the cam, remove the construction lever. This will allow the new hardware to be installed.

