

Features and Options	BF-2
Glazing Performance.....	BF-3
Design Data	
Special Sizes and Dimensions.....	BF-4
Panel Configurations	BF-5
Detailed Product Descriptions	BF-10
Unit Sections	BF-11

Document Navigation Tips:

Items listed in the table of contents above are active links that will take you to the corresponding page.
The logo on each page is a link back to this table of contents.
Bookmarks are also included in this PDF document and are available as an additional navigation option.

Features and Options

Glazing

Glazing Type

- Dual-Pane Tempered Insulating Glass
- Triple-Pane Tempered Insulating Glass
- Dual-Pane Laminated Insulating Glass

Insulated Glass Options/Low-E Types

- Low-E 366
- Low-E 366/i89
- Low-E 270

Glass

- Tempered Glass
- Laminated Glass (Dual-Pane only)

Gas Fill

- Argon
- Air (High-Altitude)

Frame and Panels

- Thermally Broken Aluminum

Finishes¹

- Satin Anodized, Black Anodized

Hardware

Finishes¹

- Satin Nickel, Black

(1) Contact your local sales representative for current designs and color options.



Glazing Thickness	Type of Glazing	NFRC Certified Product #	Glass (mm)		Gap Fill	Performance Values ₁				Shaded Areas Meet ENERGY STAR® Performance Criteria in Zones Shown					
			Ext.	Int.		U-Factor	SHGC	VLT	CR	U. S.				Canada ₂	
										Zone	ER	Zone	Zone	Zone	Zone
Dual-Pane - Narrow - Standard Sill											N	NC	SC	S	CA
1"	366/ clear	BNE-A-19-04177-00001	5	5	Argon	0.35	0.20	0.44	47						
1"	366/ i89	BNE-A-19-04197-00001	5	5	Argon	0.31	0.20	0.42	46						
1"	270/ clear	BNE-A-19-04169-00001	5	5	Argon	0.35	0.26	0.47	47						
1"	366/ clear	BNE-A-19-04175-00001	5	5	Air	0.38	0.21	0.44	47						
1"	366/ i89	BNE-A-19-04195-00001	5	5	Air	0.33	0.20	0.42	45						
1"	270/ clear	BNE-A-19-04167-00001	5	5	Air	0.38	0.27	0.47	47						
Dual-Pane Laminated - Narrow - Standard Sill															
1-1/4"	366/ clear	BNE-A-19-04225-00004	5	11	Argon	0.36	0.20	0.42	48						
1-1/4"	366/ i89	PENDING	5	11	Argon										
1-1/4"	270/ clear	BNE-A-19-04225-00002	5	11	Argon	0.36	0.26	0.46	48						
1-1/4"	366/ clear	BNE-A-19-04221-00004	5	11	Air	0.39	0.20	0.42	48						
1-1/4"	366/ i89	PENDING	5	11	Air										
1-1/4"	270/ clear	BNE-A-19-04221-00002	5	11	Air	0.39	0.26	0.46	48						
Dual-Pane - Wide - Standard Sill															
1"	366/ clear	BNE-A-19-01577-00001	5	5	Argon	0.37	0.17	0.36	47						
1"	366/ i89	BNE-A-19-01597-00001	5	5	Argon	0.34	0.17	0.35	47						
1"	270/ clear	BNE-A-19-01569-00001	5	5	Argon	0.38	0.22	0.39	47						
1"	366/ clear	BNE-A-19-01575-00001	5	5	Air	0.40	0.18	0.36	47						
1"	366/ i89	BNE-A-19-01595-00001	5	5	Air	0.36	0.17	0.35	46						
1"	270/ clear	BNE-A-19-01567-00001	5	5	Air	0.40	0.23	0.39	47						
Dual-Pane Laminated - Wide - Standard Sill															
1-1/4"	366/ clear	BNE-A-19-01625-00004	5	11	Argon	0.38	0.17	0.35	48						
1-1/4"	366/ i89	PENDING	5	11	Argon										
1-1/4"	270/ clear	BNE-A-19-01625-00002	5	11	Argon	0.38	0.22	0.38	48						
1-1/4"	366/ clear	BNE-A-19-01621-00004	5	11	Air	0.41	0.17	0.35	48						
1-1/4"	366/ i89	PENDING	5	11	Air										
1-1/4"	270/ clear	BNE-A-19-01621-00002	5	11	Air	0.41	0.22	0.38	48						

Glazing Thickness	Type of Glazing	NFRC Certified Product #	Glass (mm)			Gap Fill	Performance Values ₁				Shaded Areas Meet ENERGY STAR® Performance Criteria in Zones Shown				
			Ext.	Mid.	Int.		U-Factor	SHGC	VLT %	CR	U. S.				Canada ₂
											Zone	ER	Zone	Zone	Zone
Triple-Pane - Narrow - Standard Sill											N	NC	SC	S	CA
1-5/8"	366/ clear/ 180	BNE-A-19-04265-00002	5	5	5	Argon	0.27	0.18	0.38	50			SC	S	
1-5/8"	366/ 180/ i89	BNE-A-19-04285-00002	5	5	5	Argon	0.25	0.18	0.37	49	N	NC	SC	S	
1-5/8"	270/ clear/ 180	BNE-A-19-04257-00002	5	5	5	Argon	0.27	0.24	0.41	50					
1-5/8"	366/ clear/ 180	BNE-A-19-04263-00002	5	5	5	Air	0.29	0.18	0.38	50					
1-5/8"	366/ 180/ i89	BNE-A-19-04283-00002	5	5	5	Air	0.27	0.18	0.37	49			SC	S	
1-5/8"	270/ clear/ 180	BNE-A-19-04255-00002	5	5	5	Air	0.29	0.24	0.41	50					
Triple-Pane - Wide - Standard Sill															
1-5/8"	366/ clear/ 180	BNE-A-19-01665-00002	5	5	5	Argon	0.31	0.16	0.31	49					
1-5/8"	366/ 180/ i89	BNE-A-19-01685-00002	5	5	5	Argon	0.30	0.15	0.31	48					
1-5/8"	270/ clear/ 180	BNE-A-19-01657-00002	5	5	5	Argon	0.31	0.20	0.34	49					
1-5/8"	366/ clear/ 180	BNE-A-19-01663-00002	5	5	5	Air	0.33	0.16	0.31	49					
1-5/8"	366/ 180/ i89	BNE-A-19-01683-00002	5	5	5	Air	0.31	0.15	0.31	48					
1-5/8"	270/ clear/ 180	BNE-A-19-01655-00002	5	5	5	Air	0.33	0.20	0.34	49					

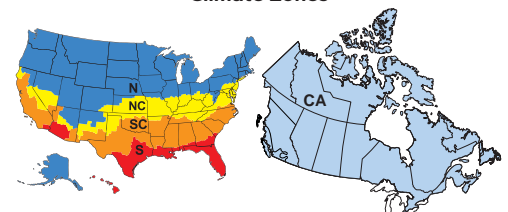
R-Value = 1/U-Factor
 SHGC = Solar Heat Gain Coefficient
 VLT % = Visible Light Transmission
 CR = Condensation Resistance
 ER = Canadian Energy Rating

(1) Glazing performance values are calculated based on NFRC 100, NFRC 200 and NFRC 500. ENERGY STAR® values are updated to 2023 (version 7) criteria.

(2) The values shown are based on Canada's updated ENERGY STAR® 2020 initiative.

Visit www.energystar.gov for Energy Star guidelines.

Climate Zones





Glazing Thickness	Type of Glazing	NFRC Certified Product #	Glass (mm)		Gap Fill	Performance Values ₁				Shaded Areas Meet ENERGY STAR® Performance Criteria in Zones Shown						
			Ext.	Int.		U-Factor	SHGC	VLT	CR	U. S.				Canada ₂		
										Zone	ER	Zone	Zone	Zone	CA	
Dual-Pane - Narrow - Flush Sill											N	NC	SC	S	CA	
1"	366/ clear	BNE-A-19-04047-00001	5	5	Argon	0.35	0.20	0.44	47							
1"	366/ i89	BNE-A-19-04067-00001	5	5	Argon	0.31	0.20	0.42	46							
1"	270/ clear	BNE-A-19-04039-00001	5	5	Argon	0.35	0.26	0.47	47							
1"	366/ clear	BNE-A-19-04045-00001	5	5	Air	0.38	0.21	0.44	47							
1"	366/ i89	BNE-A-19-04065-00001	5	5	Air	0.33	0.20	0.42	46							
1"	270/ clear	BNE-A-19-04037-00001	5	5	Air	0.38	0.27	0.47	47							
Dual-Pane Laminated - Narrow - Flush Sill																
1-1/4"	366/ clear	BNE-A-19-04095-00004	5	11	Argon	0.36	0.20	0.42	48							
1-1/4"	366/ i89	PENDING	5	11	Argon											
1-1/4"	270/ clear	BNE-A-19-04095-00002	5	11	Argon	0.36	0.26	0.46	48							
1-1/4"	366/ clear	BNE-A-19-04091-00004	5	11	Air	0.39	0.20	0.42	48							
1-1/4"	366/ i89	PENDING	5	11	Air											
1-1/4"	270/ clear	BNE-A-19-04091-00002	5	11	Air	0.39	0.26	0.46	48							
Dual-Pane - Wide - Flush Sill																
1"	366/ clear	BNE-A-19-01447-00001	5	5	Argon	0.38	0.17	0.36	47							
1"	366/ i89	BNE-A-19-01467-00001	5	5	Argon	0.35	0.17	0.35	46							
1"	270/ clear	BNE-A-19-01447-00001	5	5	Argon	0.38	0.17	0.36	47							
1"	366/ clear	BNE-A-19-01445-00001	5	5	Air	0.40	0.18	0.36	47							
1"	366/ i89	BNE-A-19-01465-00001	5	5	Air	0.36	0.17	0.35	46							
1"	270/ clear	BNE-A-19-01445-00001	5	5	Air	0.40	0.18	0.36	47							
Dual-Pane Laminated - Wide - Flush Sill																
1-1/4"	366/ clear	BNE-A-19-01495-00004	5	11	Argon	0.38	0.17	0.35	48							
1-1/4"	366/ i89	PENDING	5	11	Argon											
1-1/4"	270/ clear	BNE-A-19-01495-00002	5	11	Argon	0.38	0.22	0.38	48							
1-1/4"	366/ clear	BNE-A-19-01491-00004	5	11	Air	0.41	0.17	0.35	47							
1-1/4"	366/ i89	PENDING	5	11	Air											
1-1/4"	270/ clear	BNE-A-19-01491-00002	5	11	Air	0.41	0.22	0.38	47							

Glazing Thickness	Type of Glazing	NFRC Certified Product #	Glass (mm)			Gap Fill	Performance Values ₁				Shaded Areas Meet ENERGY STAR® Performance Criteria in Zones Shown					
			Ext.	Mid.	Int.		U-Factor	SHGC	VLT %	CR	U. S.				Canada ₂	
											Zone	ER	Zone	Zone	Zone	CA
Triple-Pane - Narrow - Flush Sill											N	NC	SC	S	CA	
1-5/8"	366/ clear/ 180	BNE-A-19-04135-00002	5	5	5	Argon	0.27	0.18	0.38	50			SC	S		
1-5/8"	366/ 180/ i89	BNE-A-19-04155-00002	5	5	5	Argon	0.25	0.18	0.37	49	N	NC	SC	S		
1-5/8"	270/ clear/ 180	BNE-A-19-04127-00002	5	5	5	Argon	0.27	0.24	0.41	50						
1-5/8"	366/ clear/ 180	BNE-A-19-04133-00002	5	5	5	Air	0.29	0.18	0.38	49						
1-5/8"	366/ 180/ i89	BNE-A-19-04153-00002	5	5	5	Air	0.27	0.18	0.37	48			SC	S		
1-5/8"	270/ clear/ 180	BNE-A-19-04125-00002	5	5	5	Air	0.29	0.24	0.41	49						
Triple-Pane - Wide - Flush Sill																
1-5/8"	366/ clear/ 180	BNE-A-19-01535-00002	5	5	5	Argon	0.31	0.16	0.31	49						
1-5/8"	366/ 180/ i89	BNE-A-19-01555-00002	5	5	5	Argon	0.30	0.15	0.31	48						
1-5/8"	270/ clear/ 180	BNE-A-19-01527-00002	5	5	5	Argon	0.31	0.20	0.34	49						
1-5/8"	366/ clear/ 180	BNE-A-19-01533-00002	5	5	5	Air	0.33	0.16	0.31	49						
1-5/8"	366/ 180/ i89	BNE-A-19-01553-00002	5	5	5	Air	0.31	0.15	0.31	48						
1-5/8"	270/ clear/ 180	BNE-A-19-01525-00002	5	5	5	Air	0.33	0.20	0.34	49						

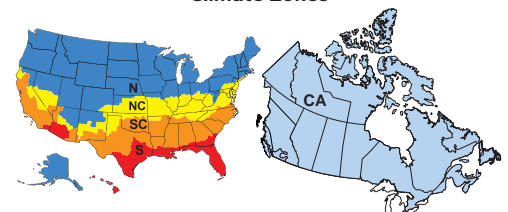
R-Value = 1/U-Factor
 SHGC = Solar Heat Gain Coefficient
 VLT % = Visible Light Transmission
 CR = Condensation Resistance
 ER = Canadian Energy Rating

(1) Glazing performance values are calculated based on NFRC 100, NFRC 200 and NFRC 500. ENERGY STAR® values are updated to 2023 (version 7) criteria.

(2) The values shown are based on Canada's updated ENERGY STAR® 2020 initiative.

Visit www.energystar.gov for Energy Star guidelines.

Climate Zones





Glazing Thickness	Type of Glazing	NFRC Certified Product #	Glass (mm)		Gap Fill	Performance Values ₁				Shaded Areas Meet ENERGY STAR® Performance Criteria in Zones Shown							
			Ext.	Int.		U-Factor	SHGC	VLT	CR	U. S.				Canada ₂			
										Zone				ER	Zone		
										N	NC	SC	S	CA			
Dual-Pane - Narrow - U-Channel Sill																	
1"	366/ clear	BNE-A-19-04307-00001	5	5	Argon	0.35	0.20	0.44	47								
1"	366/ i89	BNE-A-19-04327-00001	5	5	Argon	0.31	0.20	0.42	46								
1"	270/ clear	BNE-A-19-04299-00001	5	5	Argon	0.35	0.26	0.47	47								
1"	366/ clear	BNE-A-19-04305-00001	5	5	Air	0.38	0.21	0.44	47								
1"	366/ i89	BNE-A-19-04325-00001	5	5	Air	0.33	0.20	0.42	46								
1"	270/ clear	BNE-A-19-04297-00001	5	5	Air	0.38	0.27	0.47	47								
Dual-Pane Laminated - Narrow - U-Channel Sill																	
1-1/4"	366/ clear	BNE-A-19-04355-00004	5	11	Argon	0.36	0.20	0.42	48								
1-1/4"	366/ i89	PENDING	5	11	Argon												
1-1/4"	270/ clear	BNE-A-19-04355-00002	5	11	Argon	0.36	0.26	0.46	48								
1-1/4"	366/ clear	BNE-A-19-04351-00004	5	11	Air	0.38	0.20	0.42	47								
1-1/4"	366/ i89	PENDING	5	11	Air												
1-1/4"	270/ clear	BNE-A-19-04351-00002	5	11	Air	0.38	0.26	0.46	47								
Dual-Pane - Wide - U-Channel Sill																	
1"	366/ clear	BNE-A-19-01707-00001	5	5	Argon	0.37	0.17	0.36	47								
1"	366/ i89	BNE-A-19-01727-00001	5	5	Argon	0.34	0.17	0.35	46								
1"	270/ clear	BNE-A-19-01699-00001	5	5	Argon	0.38	0.22	0.39	47								
1"	366/ clear	BNE-A-19-01705-00001	5	5	Air	0.40	0.18	0.36	47								
1"	366/ i89	BNE-A-19-01725-00001	5	5	Air	0.36	0.17	0.35	46								
1"	270/ clear	BNE-A-19-01697-00001	5	5	Air	0.40	0.23	0.39	47								
Dual-Pane Laminated - Wide - U-Channel Sill																	
1-1/4"	366/ clear	BNE-A-19-01755-00004	5	11	Argon	0.38	0.17	0.35	48								
1-1/4"	366/ i89	PENDING	5	11	Argon												
1-1/4"	270/ clear	BNE-A-19-01755-00002	5	11	Argon	0.38	0.22	0.38	48								
1-1/4"	366/ clear	BNE-A-19-01751-00004	5	11	Air	0.41	0.17	0.35	47								
1-1/4"	366/ i89	PENDING	5	11	Air												
1-1/4"	270/ clear	BNE-A-19-01751-00002	5	11	Air	0.41	0.22	0.38	47								

Glazing Thickness	Type of Glazing	NFRC Certified Product #	Glass (mm)			Gap Fill	Performance Values ₁				Shaded Areas Meet ENERGY STAR® Performance Criteria in Zones Shown						
			Ext.	Mid.	Int.		U-Factor	SHGC	VLT %	CR	U. S.				Canada ₂		
											Zone				ER	Zone	
										N	NC	SC	S	CA			
Triple-Pane - Narrow - U-Channel Sill																	
1-5/8"	366/ clear/ 180	BNE-A-19-04395-00002	5	5	5	Argon	0.26	0.18	0.38	50	N	NC	SC	S			
1-5/8"	366/ 180/ i89	BNE-A-19-04415-00002	5	5	5	Argon	0.25	0.18	0.37	48	N	NC	SC	S			
1-5/8"	270/ clear/ 180	BNE-A-19-04387-00002	5	5	5	Argon	0.27	0.24	0.41	49							
1-5/8"	366/ clear/ 180	BNE-A-19-04393-00002	5	5	5	Air	0.29	0.18	0.38	49							
1-5/8"	366/ 180/ i89	BNE-A-19-04413-00002	5	5	5	Air	0.27	0.18	0.37	48			SC	S			
1-5/8"	270/ clear/ 180	BNE-A-19-04385-00002	5	5	5	Air	0.29	0.24	0.41	49							
Triple-Pane - Wide - U-Channel Sill																	
1-5/8"	366/ clear/ 180	BNE-A-19-01795-00002	5	5	5	Argon	0.31	0.16	0.31	49							
1-5/8"	366/ 180/ i89	BNE-A-19-01815-00002	5	5	5	Argon	0.29	0.15	0.31	48							
1-5/8"	270/ clear/ 180	BNE-A-19-01787-00002	5	5	5	Argon	0.31	0.20	0.34	49							
1-5/8"	366/ clear/ 180	BNE-A-19-01793-00002	5	5	5	Air	0.33	0.16	0.31	49							
1-5/8"	366/ 180/ i89	BNE-A-19-01813-00002	5	5	5	Air	0.31	0.15	0.31	48							
1-5/8"	270/ clear/ 180	BNE-A-19-01785-00002	5	5	5	Air	0.33	0.20	0.34	49							

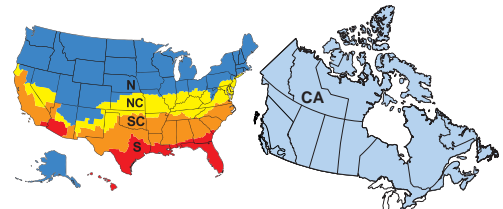
R-Value = 1/U-Factor
 SHGC = Solar Heat Gain Coefficient
 VLT % = Visible Light Transmission
 CR = Condensation Resistance
 ER = Canadian Energy Rating

(1) Glazing performance values are calculated based on NFRC 100, NFRC 200 and NFRC 500. ENERGY STAR® values are updated to 2023 (version 7) criteria.

(2) The values shown are based on Canada's updated ENERGY STAR® 2020 initiative.

Visit www.energystar.gov for Energy Star guidelines.

Climate Zones



	Frame Height		Panel Width		Panel Height		Handle Height
	Minimum	Maximum	Minimum	Maximum	Minimum	Maximum	
Bifold Window	42"	78"	24"	39"	38.3"	74.3"	16"
Bifold Door	78.0625"	132.5"	24"	39"	74.36"	128.8"	32"

Narrow Rail/Stile = 3.25"

Wide Rail/Stile = 5.125"

Special Sizes are available in 1/16" Increments

Dimension	Formula	
Rough Opening Width	$FW + 0.5"$	
Rough Opening Height	$FH + 0.5"$	
Panel Height: Standard Sill	$FH - 3.6988"$	
Panel Height: Low Profile (ADA) Sill	$FH - 3.6988"$	
Panel Height: Flush Sill	$FH - 3.6988"$	
Panel Projection	Panel width - 0.9"	
Clear Opening (Approximate)	$FW - \text{Panel Stack} - 3.187"$	
Panel Stack One-Side No Handle Set (Approximate)	$\# \text{ Panels} \times 2.25" + (\# \text{ Panels} - 1) \times 0.62"$	
Panel Stack One-Side w/ Handle Set (Approximate)	$\# \text{ Panels} \times 2.25" + (\# \text{ Panels} - 1) \times 0.62" + 5.05"$	
Panel Width	One Way No Passage Door	$((FW - 0.25) - (TP - 1) \times 0.2 - 2.8065) \div TP$
	One Way with Passage Door	$((FW - 0.25) - (TP - 1) \times 0.2 - 2.8065 - 0.125) \div TP$
	Split with Passage Door	$((FW - 0.25) - (TP - 2) \times 0.2 - 2.8064 - 0.125 - 0.275) \div TP$
	Split No Passage Door	$((FW - 0.25) - (TP - 2) \times 0.2 - 2.8064 - 0.473) \div TP$

KEY
FW = Frame Width
FH = Frame Height
TP = Total # of panels
PW = Panel Width
PH = Panel Height
ROW = Rough Opening Width
ROH = Rough Opening Height

X = Venting, O = Fixed. All dimensions are in inches.

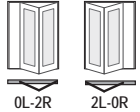
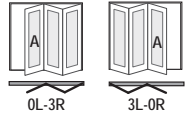
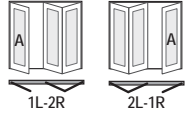
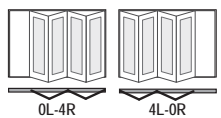
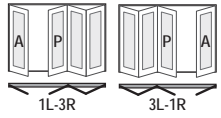

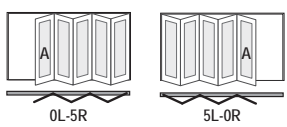
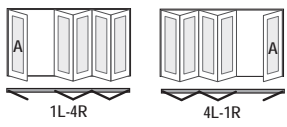

*Non-rated, passed internal Air/Water/Structural testing

Those noted as NR are not AAMA/WDMA performance certified.

Custom sized units in 1/16" increments.

Doors are viewed from the exterior.

Contact your local sales representative for more information.

Panel Configuration		Passage-Door handing	Performance Class and Grade ¹	
			Out-swing Standard Sill	Out-swing U-Channel & Flush Sill
2-Panel		No passage door	NC	NC
			NC	NC
3-Panel		Active Right, Active Left	NC	NC
			NC	NC
		Active Left, Active Right	NC	NC
			NC	NC
4-Panel		No passage door	NC	NC
			NC	NC
		Active Left/Passive Right, Passive Left/Active Right	NC	NC
			NC	NC
		No passage door	NC	NC
	5-Panel		Active Right, Active Left	NC
		NC		NC
		Active Left, Active Right	NC	NC
			NC	NC
		Active Right, Active Left	NC	NC
			NC	NC

"A" indicates the Active Passage Door where applicable.

"P" indicates a swinging Passive Door where handle set matches Passage Door.

(1) Maximum performance when glazed with the appropriate glass thickness.

Those noted as NC are not AAMA/WDMA performance certified.

Doors are configured from left to right as viewed from the exterior.

Minimum to Maximum door width dimensions refers to frame to frame dimension.

Contact your local sales representative for more information.



Panel Configuration		Passage-Door handing	Performance Class and Grade ¹		
			Out-swing Standard Sill	Out-swing U-Channel & Flush Sill	
6-Panel	 0L-6R	No passage door	NC	NC	
	 6L-0R		NC	NC	
	 1L-5R	Active Left/Passive Right, Passive Left/Active Right	NC	NC	
	 5L-1R		NC	NC	
	 2L-4R	No passage door	NC	NC	
	 4L-2R		NC	NC	
	 3L-3R	Option of Active/Passive or Passive/Active	NC	NC	
	7-Panel	 0L-7R	Active Right, Active Left	NC	NC
		 7L-0R		NC	NC
		 1L-6R	Active Left, Active Right	NC	NC
 6L-1R		NC		NC	
 2L-5R		Active Right, Active Left	NC	NC	
 5L-2R			NC	NC	
 3L-4R		Active Left, Active Right	NC	NC	
 4L-3R			NC	NC	

"A" indicates the Active Passage Door where applicable.

"P" indicates a swinging Passive Door where applicable.

(1) Maximum performance when glazed with the appropriate glass thickness.

Those noted as NC are not AAMA/WDMA performance certified.

Doors are configured from left to right as viewed from the exterior.

Minimum to Maximum door width dimensions refers to frame to frame dimension.

Contact your local sales representative for more information.



Panel Configuration		Passage-Door handing	Performance Class and Grade ¹	
			Out-swing Standard Sill	Out-swing U-Channel & Flush Sill
8-Panel	 0L-8R	No passage door	NC	NC
	 8L-0R		NC	NC
	 1L-7R	Active Left/Passive Right, Passive Left/Active Right	NC	NC
	 7L-1R		NC	NC
	 2L-6R	No passage door	NC	NC
	 6L-2R		NC	NC
	 3L-5R	Option of Active/Passive or Passive/Active	NC	NC
	 5L-3R		NC	NC
	 4L-4R	No passage door	NC	NC
	9-Panel	 1L-8R	Active Left/Passive Right, Passive Left/Active Right	NC
 8L-1R		NC		NC
 2L-7R		Active Right, Active Left	NC	NC
 7L-2R			NC	NC
 3L-6R		Option of Active/Passive or Passive/Active	NC	NC
 6L-3R			NC	NC
 4L-5R		Active Right, Active Left	NC	NC
 5L-4R			NC	NC

"A" indicates the Active Passage Door where applicable.

"P" indicates a swinging Passive Door where handle set matches Passage Door.

(1) Maximum performance when glazed with the appropriate glass thickness.

Those noted as NC are not AAMA/WDMA performance certified.

Doors are configured from left to right as viewed from the exterior.

Minimum to Maximum door width dimensions refers to frame to frame dimension.

Contact your local sales representative for more information.



Panel Configuration		Passage-Door handing	Performance Class and Grade ¹	
			Out-swing Standard Sill	Out-swing U-Channel & Flush Sill
10-Panel	 2L-8R	No passage door	NC	NC
	 8L-2R		NC	NC
	 3L-7R	Option of Active/Passive or Passive/Active	NC	NC
	 7L-3R		NC	NC
	 4L-6R	No passage door	NC	NC
 6L-4R	NC		NC	
 5L-5R	Option of Active/Passive or Passive/Active	NC	NC	
11-Panel	 3L-8R	Active Left or Active Right	NC	NC
	 8L-3R		NC	NC
	 4L-7R	Active Left or Active Right	NC	NC
	 7L-4R		NC	NC
	 5L-6R	Active Left or Active Right	NC	NC
	 6L-5R		NC	NC
12-Panel	 4L-8R	No passage door	NC	NC
	 8L-4R		NC	NC
	 5L-7R	Option of Active/Passive or Passive/Active	NC	NC
	 7L-5R		NC	NC
	 6L-6R	No passage door	NC	NC

"A" indicates the Active Passage Door where applicable.

"P" indicates a swinging Passive Door where handle set matches Passage Door.

(1) Maximum performance when glazed with the appropriate glass thickness.

Those noted as NC are not AAMA/WDMA performance certified.

Doors are configured from left to right as viewed from the exterior.

Minimum to Maximum door width dimensions refers to frame to frame dimension.

Contact your local sales representative for more information.



Panel Configuration		Passage-Door handing	Performance Class and Grade ¹		
			Out-swing Standard Sill	Out-swing U-Channel & Flush Sill	
13-Panel	<p>5L-8R</p>	5L-8R 8L-5R	Active Left or Active Right	NC	NC
	<p>8L-5R</p>			NC	NC
	<p>6L-7R</p>	6L-7R 7L-6R	Active Left or Active Right	NC	NC
	<p>7L-6R</p>			NC	NC
14-Panel	<p>6L-8R</p>	6L-8R 8L-6R	No passage door	NC	NC
	<p>8L-6R</p>			NC	NC
	<p>7L-7R</p>	7L-7R	Option of Active/Passive or Passive/Active	NC	NC
15-Panel	<p>7L-8R</p>	7L-8R 8L-7R	Active Left or Active Right	NC	NC
	<p>8L-7R</p>			NC	NC
16-Panel	<p>8L-8R</p>	8L-8R	No passage door	NC	NC

"A" indicates the Active Passage Door where applicable.

"P" indicates a swinging Passive Door where handle set matches Passage Door.

(1) Maximum performance when glazed with the appropriate glass thickness.

Those noted as NC are not AAMA/WDMA performance certified.

Doors are configured from left to right as viewed from the exterior.

Minimum to Maximum door width dimensions refers to frame to frame dimension.

Contact your local sales representative for more information.

Frame

- Extruded aluminum head and jambs with thermal breaks [Block frame].
- Extruded aluminum [Standard sill with thermal breaks] [Flush sill with thermal breaks] [U-channel sill].
- Frame Finish is [Satin Anodized] [Black Anodized].
- Frame Depth 4-1/2"

Door Panels

- Extruded aluminum [Narrow Stiles/Rails: 3-1/4"] [Wide Stiles/Rails: 5-1/8"]with thermal breaks.
- Corners are secured with metal fasteners.

Weatherstripping

- Dual-durometer extruded polymer along head and jambs of door frame.
- Extruded pile with quiet fin at top and sides of door panel.
- Dual extruded piles with quiet fin at bottom of door panel on flush and u-channel sills.
- Dual-durometer extruded polymer along standard sill

Glazing System¹

- Quality fully-tempered float glass complying with ASTM C 1048.
- High altitude glazing available.
- Silicone-glazed, 1" double-pane, dual-seal, insulating glass
- [[366/Clear] [366/i89] [270/Clear] Low-E [with argon]]
-or-
- Silicone-glazed, 1-1/4" double-pane, dual-seal, laminated, insulating glass.
- [[366/Clear] [270/Clear] Low-E [with argon]]
-or-
- Silicone-glazed, 1-5/8" triple-pane, dual-seal, insulating glass
- [[366/Clear/180] [366/180/i89] [270/Clear/180] Low-E [with argon]].

Hardware

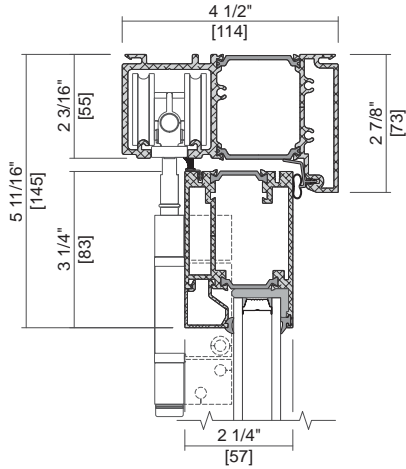
- Handles
 - Contemporary multi-point lock lever with Euro-cylinder in [satin nickel] [black].
- Locks
 - Multi-point locking system with deadbolt and additional locking points at jamb, sill, and head that will engage simultaneously. Lever located at 36" from bottom of panel.
- Passive Panels and Windows
 - - Multi-point lock system with shoot-bolts at the head and sill
 - - Dual Point Handle [without thumb-turn][with thumb-turn]
- Hardware finish is [Satin Nickel] [Matte Black].
- Hardware handle location from bottom of the panel to center of lock thumb turn [frame height >78" is 36"] [frame height <78" is 16"].

(1) Insulating glass with argon is Low-E coated. All other insulating glass is air-filled.



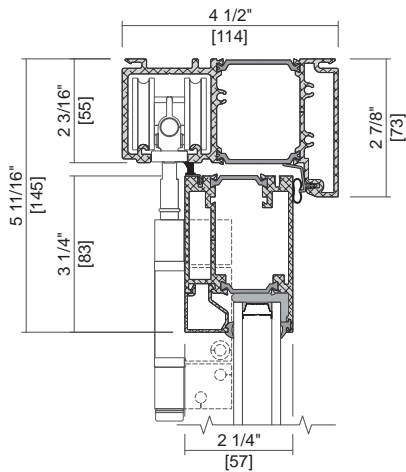
NARROW STILE

Standard Block Frame

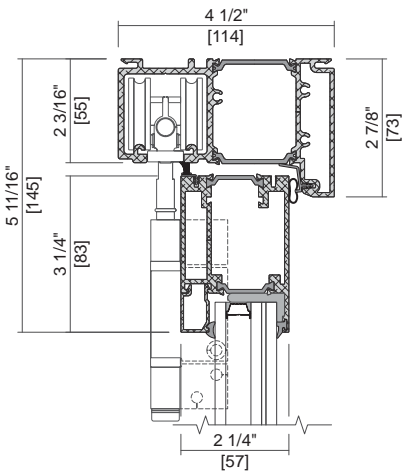


GLAZING OPTIONS

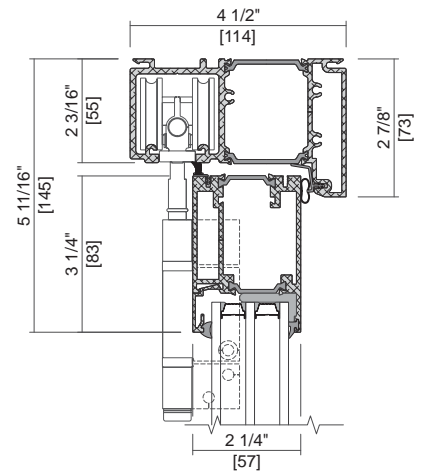
1" Dual IG



1-1/4" Impact IG



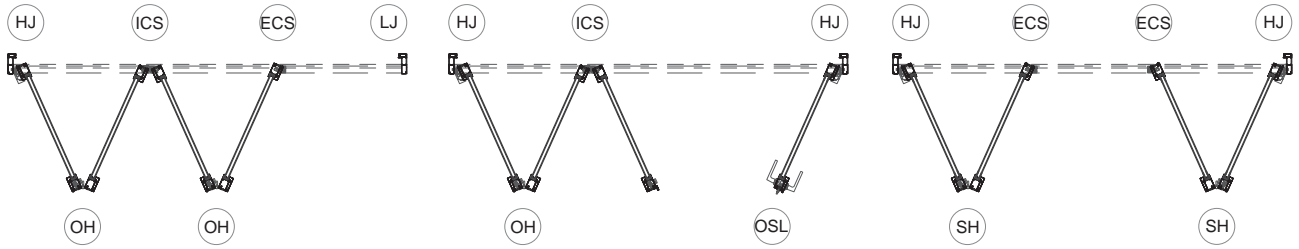
1-5/8" Triple IG



Scale 3" = 1' 0"

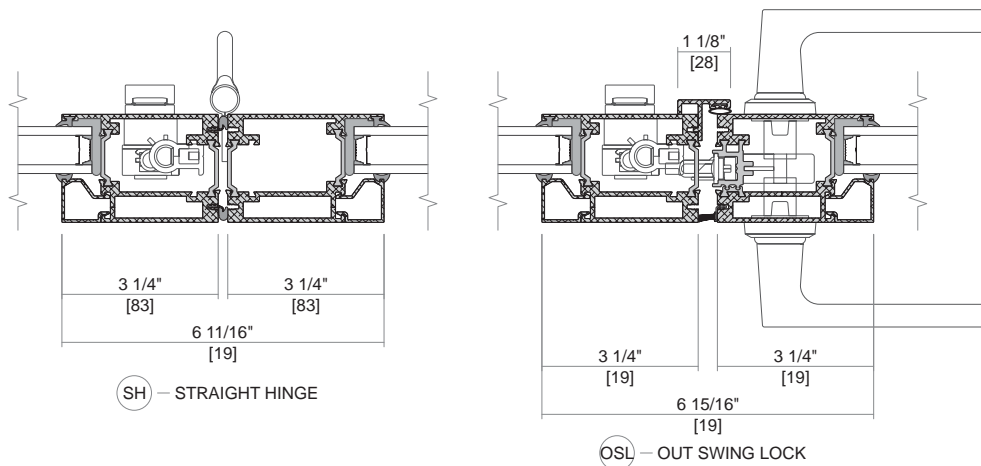
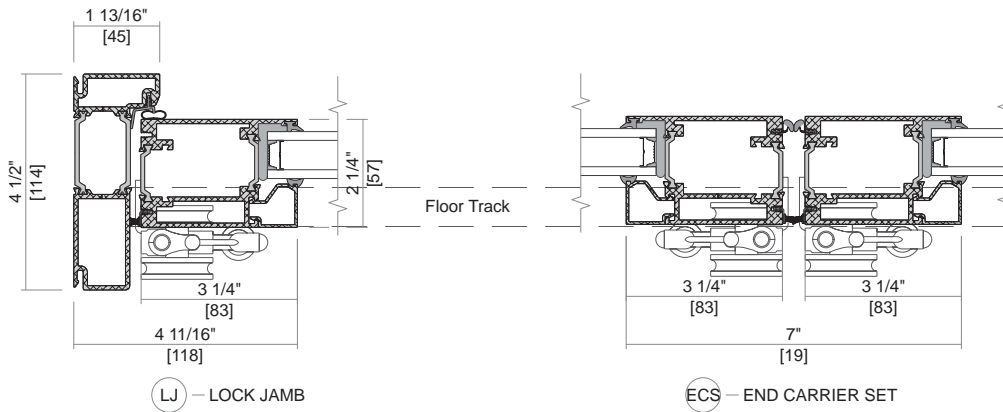
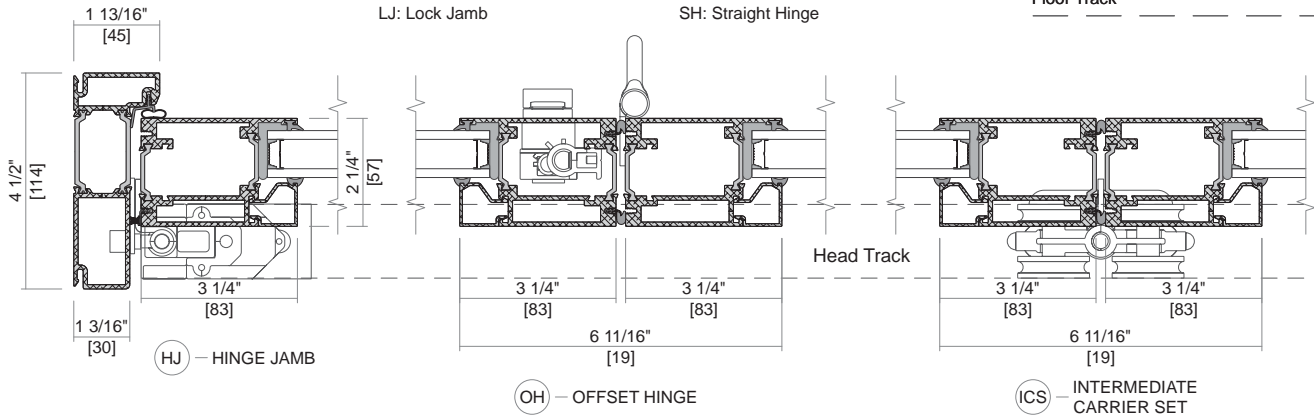
All dimensions are approximate.

Rev. 09/04/2024



ECS: End Carrier Set
 HJ: Hinged Jamb
 ICS: Intermediate Carrier Set
 LJ: Lock Jamb
 LJC: Lock Jamb Carrier
 OSL: Out Swing Lock
 OH: Offset Hinge
 SH: Straight Hinge

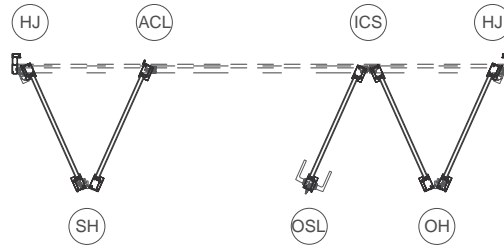
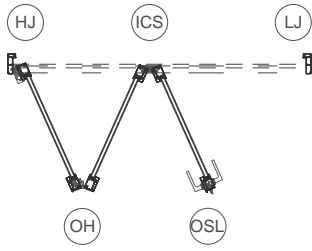
Head Track
 Floor Track



Scale 3" = 1' 0"

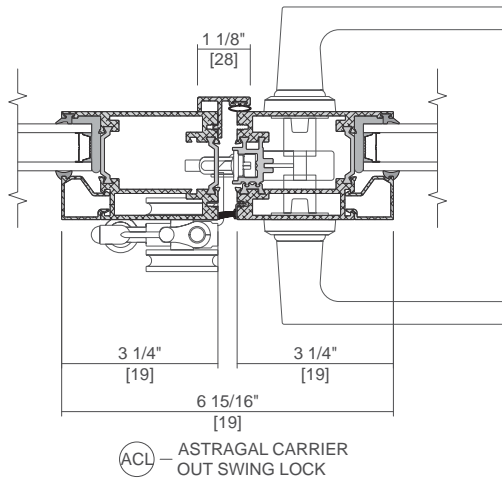
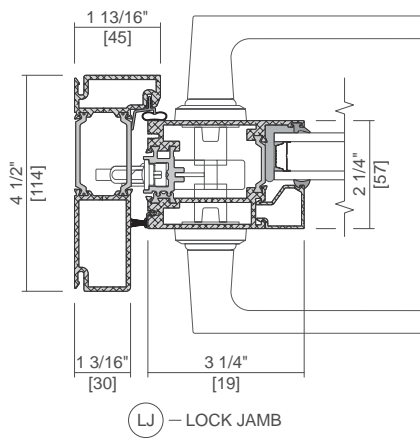
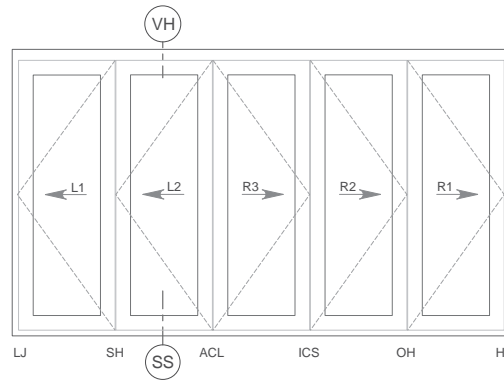
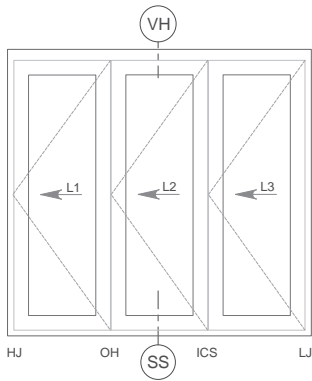
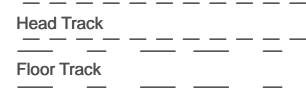
All dimensions are approximate.

Rev. 12/23/2024



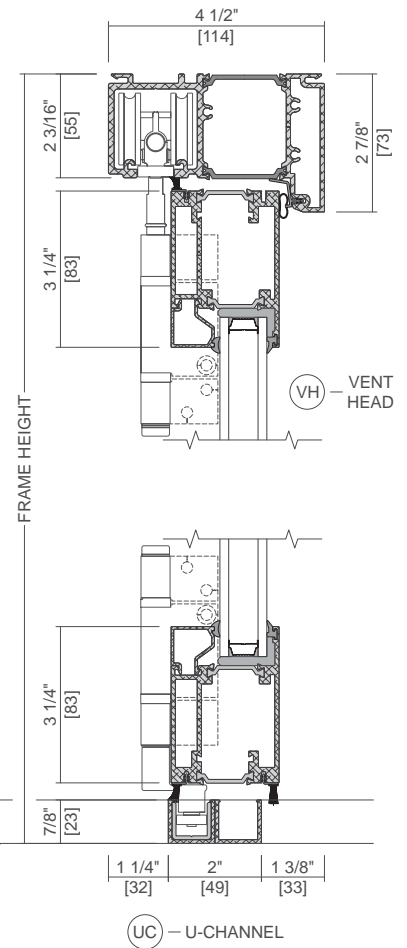
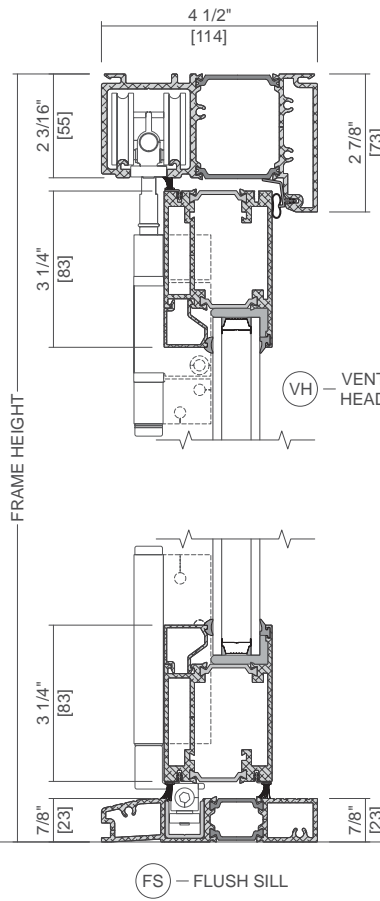
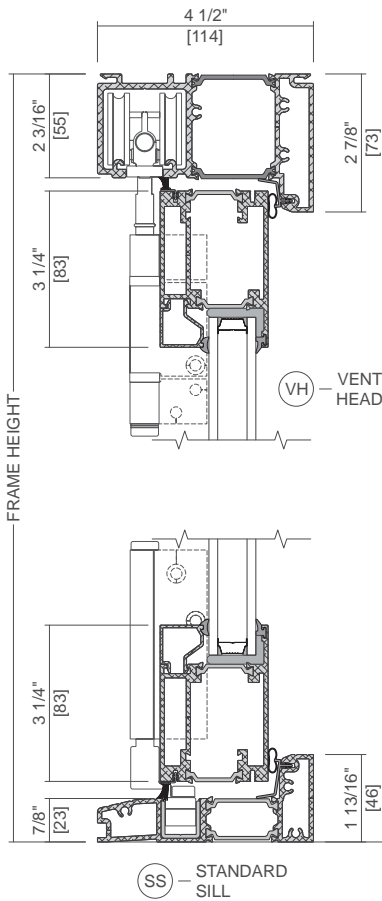
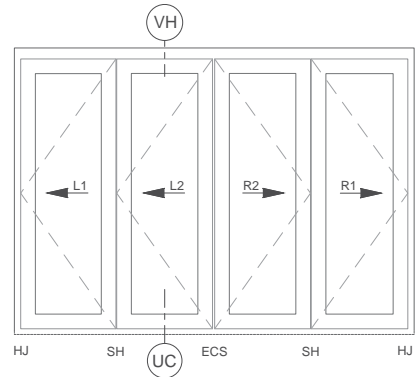
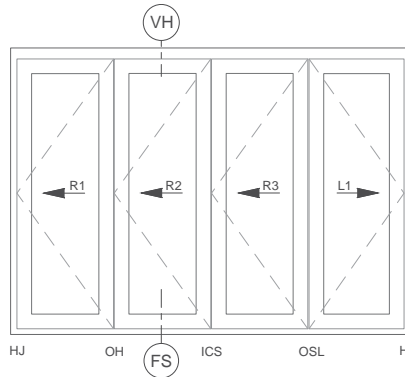
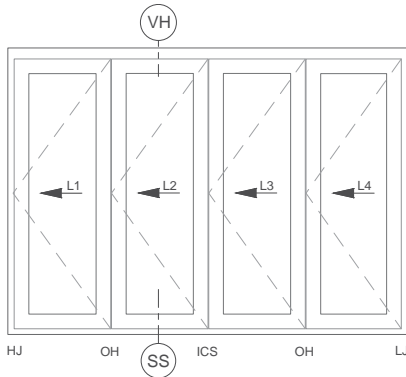
ACL: Astragal Carrier Lock
HJ: Hinged Jamb
ICS: Intermediate Carrier Set

LJ: Lock Jamb
OSL: Out Swing Lock
SH: Straight Hinge



LJ - LOCK JAMB

ACL - ASTRAGAL CARRIER
OUT SWING LOCK



Scale 3" = 1' 0"

All dimensions are approximate.

Rev. 09/04/2024