



## Introduction

Supporting Documents - CAD downloads.....	W-ID-3
Typical Sealant Placement Details .....	W-ID-4

## Steady Set™ Installation Details—Clad Units

General Notes.....	W-ID-5
Casement with Siding.....	W-ID-6
Double-Hung with Stucco.....	W-ID-7
Fixed Frame with Brick Veneer.....	W-ID-8

## Fin Installation Details—Clad Units

General Notes.....	W-ID-9
Casement with Siding.....	W-ID-10
Double-Hung with Siding.....	W-ID-11
Sliding Door with Siding.....	W-ID-12
Casement with Brick Veneer.....	W-ID-13
Double-Hung with Brick Veneer.....	W-ID-14
Hinged Door with Brick Veneer.....	W-ID-15
Casement with Stucco.....	W-ID-16
Casement with a Water-Managed Exterior Insulation and Finish System .....	W-ID-17

## Clip Installation Details—Clad Units

General Notes.....	W-ID-18
Casement with Steel Studs and Brick Veneer.....	W-ID-19
Casement with Concrete Block and Brick Veneer.....	W-ID-20
Casement with Precast Concrete.....	W-ID-21
Lifestyle Series Casement with Precast Concrete.....	W-ID-22

## Brickmould Installation Details—Wood Units

General Notes.....	W-ID-23
Double-Hung with Siding.....	W-ID-24
Hinged Door with Siding.....	W-ID-25
Casement with Brick Veneer.....	W-ID-26
Double-Hung with Brick Veneer.....	W-ID-27
Hinged Door with Brick Veneer.....	W-ID-28
Casement with Stucco.....	W-ID-29

## Impact-Resistant Installation Details

Casement with Concrete Block and Stucco.....	W-ID-30
--	---------



### Introduction

This section presents typical construction details for single units in new construction. It provides a comprehensive review of the extensive range of proprietary products that Pella Corporation provides as the single source for solutions to virtually any technical, construction or installation challenge. Additionally, typical installation details for Pella impact-resistant window and door units are presented.

#### The objectives of installation systems are to:

- Secure the attachment of the window to the wall
- Limit air and water infiltration
- Allow for expansion and contraction

#### Important

Determining and meeting the structural load requirements and design of the rough opening is the responsibility of the architect or engineer. Window frame systems are not designed to support additional elements or components of the building wall system.

#### Fins and clips are the two basic methods of the Pella aluminum-clad window attachments.

- **Fin Installation**—applicable when window units can be installed from the exterior prior to applying lap siding or other cladding material.
- **Clip Installation**—applicable where the construction materials or sequence dictates that window units be installed from the interior or after the wall system is completely constructed. This method of attachment is typical in projects with masonry veneer, such as brick or precast concrete.



# Installation Details - Wood and Aluminum-Clad Wood Exterior

## Supporting Documents - CAD downloads

Document	Link
<b>Steady Set Installation - Clad</b>	
Casement with Siding, Double-Hung with Stucco and Fixed Frame Direct Set with Brick Veneer	<a href="https://media.pella.com/professional/adm/Clad-Wood/?utm_source=pdfdoc">https://media.pella.com/professional/adm/Clad-Wood/?utm_source=pdfdoc</a>
<b>Fin Installation - Clad</b>	
Casement with Water-Managed Exterior Insulation & Finish System	<a href="https://media.pella.com/professional/adm/Clad-Wood/ASCLAW_E_D.dwg?utm_source=pdfdoc">https://media.pella.com/professional/adm/Clad-Wood/ASCLAW_E_D.dwg?utm_source=pdfdoc</a>
Casement with Brick Veneer	<a href="https://media.pella.com/professional/adm/Clad-Wood/ASCLAW_E_D.dwg?utm_source=pdfdoc">https://media.pella.com/professional/adm/Clad-Wood/ASCLAW_E_D.dwg?utm_source=pdfdoc</a>
Casement with Siding	<a href="https://media.pella.com/professional/adm/Clad-Wood/ASCLAW_E_D.dwg?utm_source=pdfdoc">https://media.pella.com/professional/adm/Clad-Wood/ASCLAW_E_D.dwg?utm_source=pdfdoc</a>
Casement with Stucco	<a href="https://media.pella.com/professional/adm/Clad-Wood/ECCMSTC.dwg?utm_source=pdfdoc">https://media.pella.com/professional/adm/Clad-Wood/ECCMSTC.dwg?utm_source=pdfdoc</a>
Double-Hung with Brick Veneer	<a href="https://media.pella.com/professional/adm/Clad-Wood/E-10_ECDHBRK.dwg?utm_source=pdfdoc">https://media.pella.com/professional/adm/Clad-Wood/E-10_ECDHBRK.dwg?utm_source=pdfdoc</a>
Double-Hung with Siding	<a href="https://media.pella.com/professional/adm/Clad-Wood/E-07_ECDHWS.dwg?utm_source=pdfdoc">https://media.pella.com/professional/adm/Clad-Wood/E-07_ECDHWS.dwg?utm_source=pdfdoc</a>
Hinged Door with Brick Veneer	<a href="https://media.pella.com/professional/adm/Clad-Wood/E-11_ECIFBRK.dwg?utm_source=pdfdoc">https://media.pella.com/professional/adm/Clad-Wood/E-11_ECIFBRK.dwg?utm_source=pdfdoc</a>
Sliding Door with Siding	<a href="https://media.pella.com/professional/adm/Clad-Wood/ECSEFWS.dwg?utm_source=pdfdoc">https://media.pella.com/professional/adm/Clad-Wood/ECSEFWS.dwg?utm_source=pdfdoc</a>
Entry Door with Brick Veneer	<a href="https://media.pella.com/professional/adm/Clad-Wood/E-14_ECSEBRK.dwg?utm_source=pdfdoc">https://media.pella.com/professional/adm/Clad-Wood/E-14_ECSEBRK.dwg?utm_source=pdfdoc</a>
Steel Frame Fire Door with Siding	<a href="https://media.pella.com/professional/adm/Clad-Wood/E-15_ECSEFIRE.dwg?utm_source=pdfdoc">https://media.pella.com/professional/adm/Clad-Wood/E-15_ECSEFIRE.dwg?utm_source=pdfdoc</a>
<b>Factory-Applied Aluminum Trim</b>	
EnduraClad® Factory-Applied Trim in Brick Veneer Applications	<a href="https://media.pella.com/professional/adm/Clad-Wood/FABMBRK.dwg?utm_source=pdfdoc">https://media.pella.com/professional/adm/Clad-Wood/FABMBRK.dwg?utm_source=pdfdoc</a>
EnduraClad Factory-Applied Trim in Replacement Applications	<a href="https://media.pella.com/professional/adm/Clad-Wood/FARPLBMBRK.dwg?utm_source=pdfdoc">https://media.pella.com/professional/adm/Clad-Wood/FARPLBMBRK.dwg?utm_source=pdfdoc</a>
EnduraClad Factory-Applied Trim in Siding Applications	<a href="https://media.pella.com/professional/adm/Clad-Wood/FABMWD.dwg?utm_source=pdfdoc">https://media.pella.com/professional/adm/Clad-Wood/FABMWD.dwg?utm_source=pdfdoc</a>
EnduraClad Factory-Applied Trim Profiles	<a href="https://media.pella.com/professional/adm/Clad-Wood/ACFABM_D.dwg?utm_source=pdfdoc">https://media.pella.com/professional/adm/Clad-Wood/ACFABM_D.dwg?utm_source=pdfdoc</a>
<b>Wood Brickmould</b>	
Casement with Brick Veneer	<a href="https://media.pella.com/professional/adm/Clad-Wood/E-24EWCMBRK.dwg?utm_source=pdfdoc">https://media.pella.com/professional/adm/Clad-Wood/E-24EWCMBRK.dwg?utm_source=pdfdoc</a>
Casement with Stucco	<a href="https://media.pella.com/professional/adm/Clad-Wood/EWCMSCTC.dwg?utm_source=pdfdoc">https://media.pella.com/professional/adm/Clad-Wood/EWCMSCTC.dwg?utm_source=pdfdoc</a>
Double-Hung with Brick Veneer	<a href="https://media.pella.com/professional/adm/Clad-Wood/E-25_EWDHBRK.dwg?utm_source=pdfdoc">https://media.pella.com/professional/adm/Clad-Wood/E-25_EWDHBRK.dwg?utm_source=pdfdoc</a>
Double-Hung with Siding	<a href="https://media.pella.com/professional/adm/Clad-Wood/E-22_EWDHWS.dwg?utm_source=pdfdoc">https://media.pella.com/professional/adm/Clad-Wood/E-22_EWDHWS.dwg?utm_source=pdfdoc</a>
Hinged Door with Brick Veneer	<a href="https://media.pella.com/professional/adm/Clad-Wood/EWIFBRK.dwg?utm_source=pdfdoc">https://media.pella.com/professional/adm/Clad-Wood/EWIFBRK.dwg?utm_source=pdfdoc</a>
Hinged Door with Siding	<a href="https://media.pella.com/professional/adm/Clad-Wood/EWIFWS.dwg?utm_source=pdfdoc">https://media.pella.com/professional/adm/Clad-Wood/EWIFWS.dwg?utm_source=pdfdoc</a>
<b>Clip Installation</b>	
Casement with Concrete Block and Brick Veneer	<a href="https://media.pella.com/professional/adm/Clad-Wood/E-18_ECCMCBBRK.dwg?utm_source=pdfdoc">https://media.pella.com/professional/adm/Clad-Wood/E-18_ECCMCBBRK.dwg?utm_source=pdfdoc</a>
Casement with Precast Concrete	<a href="https://media.pella.com/professional/adm/Clad-Wood/ECASCMPC.dwg?utm_source=pdfdoc">https://media.pella.com/professional/adm/Clad-Wood/ECASCMPC.dwg?utm_source=pdfdoc</a>
Casement with Steel Studs and Brick Veneer	<a href="https://media.pella.com/professional/adm/Clad-Wood/E-17_ECCMSSBRK.dwg?utm_source=pdfdoc">https://media.pella.com/professional/adm/Clad-Wood/E-17_ECCMSSBRK.dwg?utm_source=pdfdoc</a>
<b>Impact-Resistant Glazing - Clad</b>	
Casement with Brick Veneer	<a href="https://media.pella.com/professional/adm/Clad-Wood/NCbrkCMH.dwg?utm_source=pdfdoc">https://media.pella.com/professional/adm/Clad-Wood/NCbrkCMH.dwg?utm_source=pdfdoc</a>
Casement with Concrete Block and Stucco	<a href="https://media.pella.com/professional/adm/Clad-Wood/NCstcCMH.dwg?utm_source=pdfdoc">https://media.pella.com/professional/adm/Clad-Wood/NCstcCMH.dwg?utm_source=pdfdoc</a>
Casement with Vinyl Siding	<a href="https://media.pella.com/professional/adm/Clad-Wood/NCvscCMH.dwg?utm_source=pdfdoc">https://media.pella.com/professional/adm/Clad-Wood/NCvscCMH.dwg?utm_source=pdfdoc</a>
Double-Hung with Brick Veneer	<a href="https://media.pella.com/professional/adm/Clad-Wood/NCbrkscDHH.dwg?utm_source=pdfdoc">https://media.pella.com/professional/adm/Clad-Wood/NCbrkscDHH.dwg?utm_source=pdfdoc</a>
Double-Hung with Brick Veneer and Clip	<a href="https://media.pella.com/professional/adm/Clad-Wood/NCbrkcdHH.dwg?utm_source=pdfdoc">https://media.pella.com/professional/adm/Clad-Wood/NCbrkcdHH.dwg?utm_source=pdfdoc</a>
Double-Hung with Concrete Block and Stucco	<a href="https://media.pella.com/professional/adm/Clad-Wood/NCstcscDHH.dwg?utm_source=pdfdoc">https://media.pella.com/professional/adm/Clad-Wood/NCstcscDHH.dwg?utm_source=pdfdoc</a>
Double-Hung with Concrete Block and Stucco and Clip	<a href="https://media.pella.com/professional/adm/Clad-Wood/NCstccDHH.dwg?utm_source=pdfdoc">https://media.pella.com/professional/adm/Clad-Wood/NCstccDHH.dwg?utm_source=pdfdoc</a>
Double-Hung with Vinyl Siding	<a href="https://media.pella.com/professional/adm/Clad-Wood/NCvsscDHH.dwg?utm_source=pdfdoc">https://media.pella.com/professional/adm/Clad-Wood/NCvsscDHH.dwg?utm_source=pdfdoc</a>
Double-Hung with Vinyl Siding and Clip	<a href="https://media.pella.com/professional/adm/Clad-Wood/NCvscdHH.dwg?utm_source=pdfdoc">https://media.pella.com/professional/adm/Clad-Wood/NCvscdHH.dwg?utm_source=pdfdoc</a>
Fixed Frame with Brick Veneer	<a href="https://media.pella.com/professional/adm/Clad-Wood/NCbrkFFH.dwg?utm_source=pdfdoc">https://media.pella.com/professional/adm/Clad-Wood/NCbrkFFH.dwg?utm_source=pdfdoc</a>
Fixed Frame with Vinyl Siding	<a href="https://media.pella.com/professional/adm/Clad-Wood/NCvscFFH.dwg?utm_source=pdfdoc">https://media.pella.com/professional/adm/Clad-Wood/NCvscFFH.dwg?utm_source=pdfdoc</a>
Hinged Door with Brick Veneer and Screw	<a href="https://media.pella.com/professional/adm/Clad-Wood/NCbrkOFH.dwg?utm_source=pdfdoc">https://media.pella.com/professional/adm/Clad-Wood/NCbrkOFH.dwg?utm_source=pdfdoc</a>
Hinged Door with Concrete Block and Stucco with Screw	<a href="https://media.pella.com/professional/adm/Clad-Wood/NCstcOFH.dwg?utm_source=pdfdoc">https://media.pella.com/professional/adm/Clad-Wood/NCstcOFH.dwg?utm_source=pdfdoc</a>
Hinged Door with Vinyl Siding and Screw	<a href="https://media.pella.com/professional/adm/Clad-Wood/NCvscOFH.dwg?utm_source=pdfdoc">https://media.pella.com/professional/adm/Clad-Wood/NCvscOFH.dwg?utm_source=pdfdoc</a>
<b>Replacement</b>	
Standard Subframe System	<a href="https://media.pella.com/professional/adm/Clad-Wood/AC4.dwg?utm_source=pdfdoc">https://media.pella.com/professional/adm/Clad-Wood/AC4.dwg?utm_source=pdfdoc</a>
T-Subframe System	<a href="https://media.pella.com/professional/adm/Clad-Wood/AC4.dwg?utm_source=pdfdoc">https://media.pella.com/professional/adm/Clad-Wood/AC4.dwg?utm_source=pdfdoc</a>
<b>Combinations</b>	
Factory-Assembled Door to Transom	<a href="https://media.pella.com/professional/adm/Clad-Wood/CRFMMDTR-dl.dwg?utm_source=pdfdoc">https://media.pella.com/professional/adm/Clad-Wood/CRFMMDTR-dl.dwg?utm_source=pdfdoc</a>
Factory-Assembled Windows	<a href="https://media.pella.com/professional/adm/Clad-Wood/CRFMWD-dl.dwg?utm_source=pdfdoc">https://media.pella.com/professional/adm/Clad-Wood/CRFMWD-dl.dwg?utm_source=pdfdoc</a>
Non-Factory-Assembled Door to Transom	<a href="https://media.pella.com/professional/adm/Clad-Wood/CRNFMDTR-dl.dwg?utm_source=pdfdoc">https://media.pella.com/professional/adm/Clad-Wood/CRNFMDTR-dl.dwg?utm_source=pdfdoc</a>
Non-Factory-Assembled Door to Window Jamb	<a href="https://media.pella.com/professional/adm/Clad-Wood/CRNFMDR-dl.dwg?utm_source=pdfdoc">https://media.pella.com/professional/adm/Clad-Wood/CRNFMDR-dl.dwg?utm_source=pdfdoc</a>
Non-Factory-Assembled Windows	<a href="https://media.pella.com/professional/adm/Clad-Wood/CRNFMDWD-dl.dwg?utm_source=pdfdoc">https://media.pella.com/professional/adm/Clad-Wood/CRNFMDWD-dl.dwg?utm_source=pdfdoc</a>

Appropriate drafting software is required for opening or viewing CAD files, Pella will not provide drafting software advice or technical support.



## Installation Details - Wood and Aluminum-Clad Wood Exterior

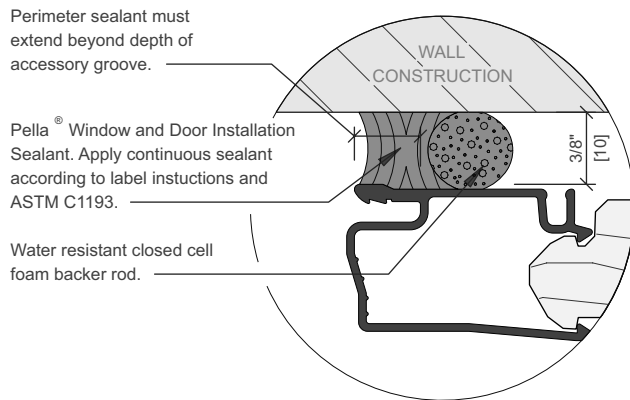
### Typical Sealant Placement Details

Proper application of perimeter sealant to prevent leakage around windows is the responsibility of the installer.

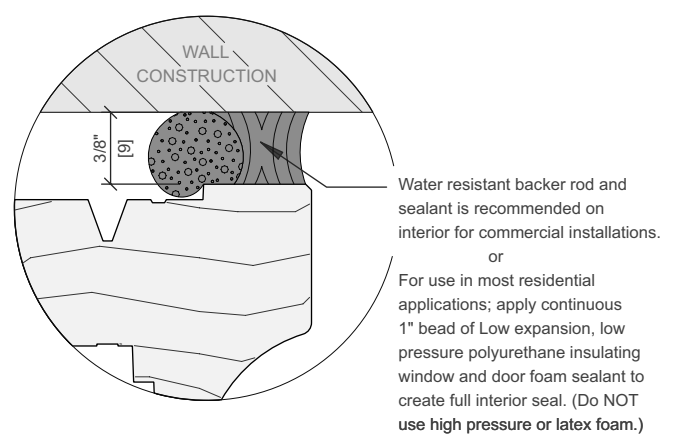
Use Pella Window and Door Installation Sealant or equivalent high quality, multi-purpose sealant. Typical sealant placement details are shown below. Apply sealants according to their label directions and ASTM C1193. Refer to the Installation Accessories section and the Combination Assemblies section for additional information.

**Special Note**—Some manufacturers of sealants recommend or require the use of primers to ensure adequate adhesion to painted porous surfaces.

TYPICAL EXTERIOR  
PERIMETER SEALANT DETAIL

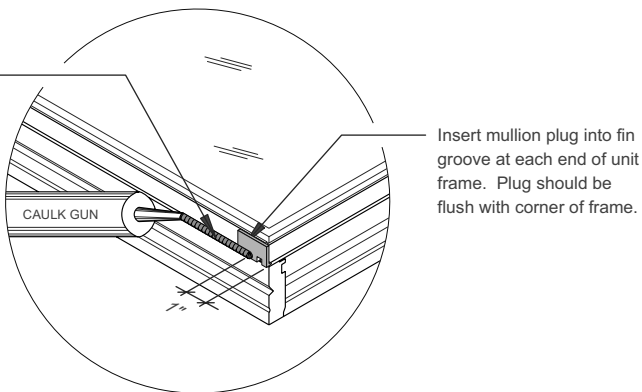


TYPICAL INTERIOR  
PERIMETER SEALANT DETAIL

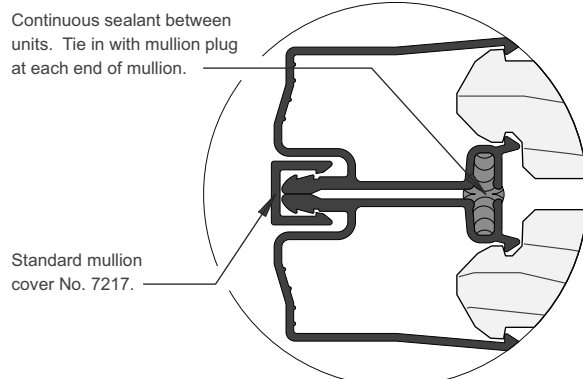


STANDARD JOINING MULLION  
SEALANT & PLUG PLACEMENT

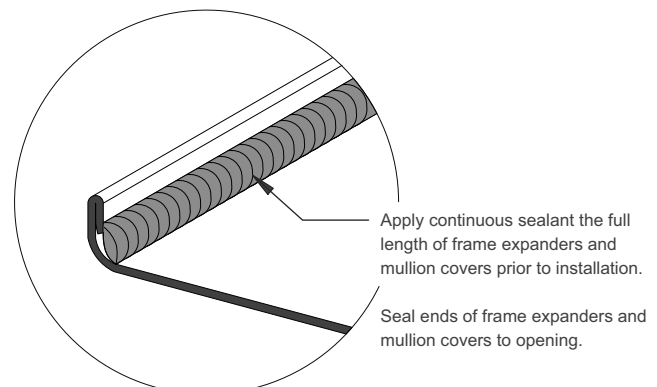
3/8" bead of polyurethane or silicone sealant beginning 1" from frame corner on mullion plug and continuing along fin groove to within 1" of opposite corner.



STANDARD JOINING MULLION  
COVER DETAIL



TYPICAL SEALANT PLACEMENT DETAIL  
AT FRAME EXPANDERS AND MULLION COVERS

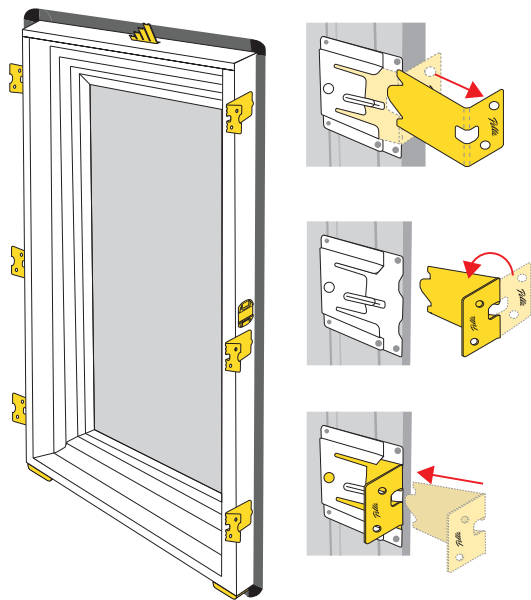




## Steady Set™ Installation - General Notes

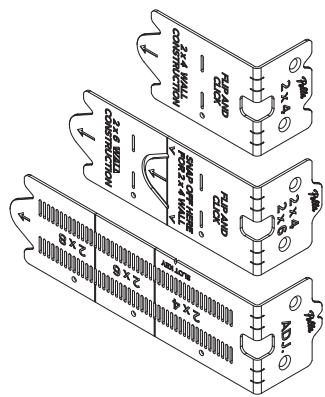
### Pella® Steady Set™ Installation System

Pella's exclusive Steady Set installation method makes installation faster, safer and requires fewer personnel. Windows are installed, shimmed and fastened from the interior. Flashing and sealants are installed in the same manner as nailing fin according to the type of weather resistant barrier system.

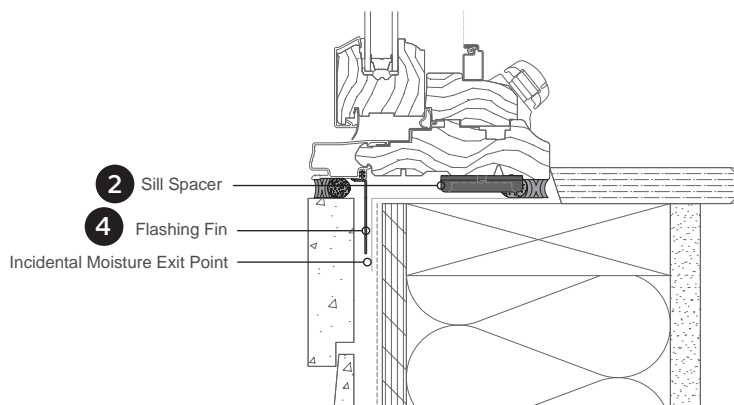
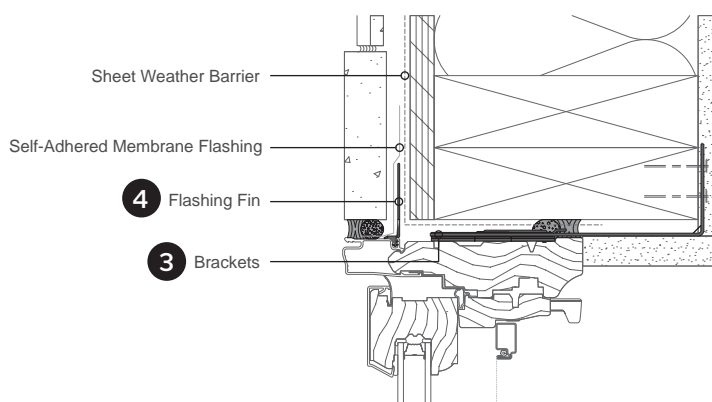
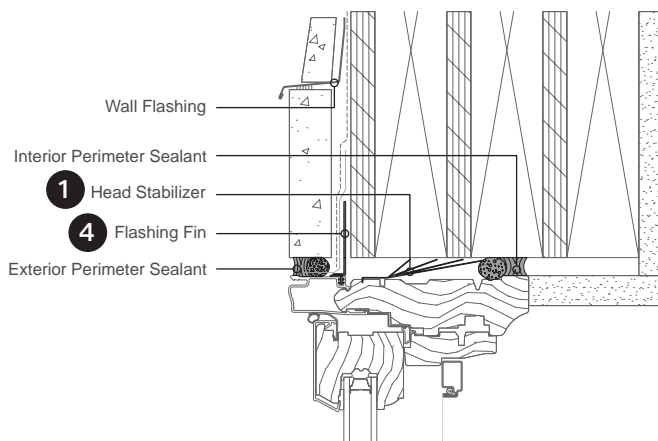


#### Flip and Click Installation Bracket:

Three options available to accommodate wall thickness specific to your installation.



3-1/2" to 8-3/4" wall thickness.



- 1 The head stabilizer is a factory-installed patent pending device that helps hold the window in place after it has been placed in the opening from the interior.
- 2 Sill spacers hold the window above the rough opening sill making shimming and interior sealant installation easier.
- 3 Exclusive, factory-installed Steady-Set brackets secure the window to the wall. After quickly flipping over and clicking factory-installed brackets into place, the window can be installed from the interior at the correct depth. Steady set brackets may also be required at the head and sill of wider windows and multi-wide window combinations.
- 4 After removing fin covers, flashing fins can be folded out and integrated with the weather-resistive barrier using conventional flashing materials and methods.

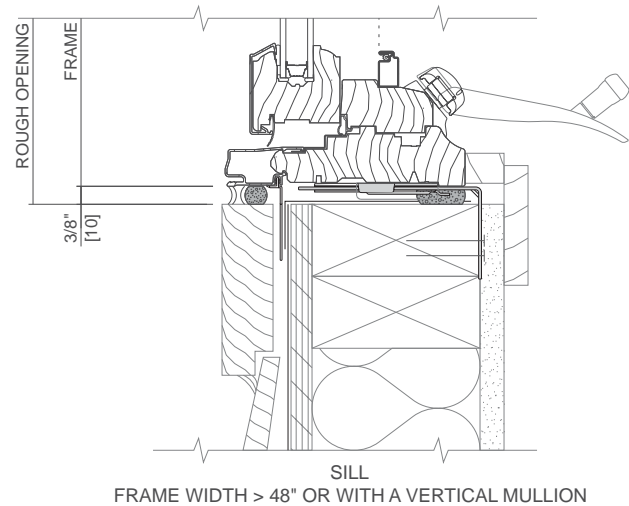
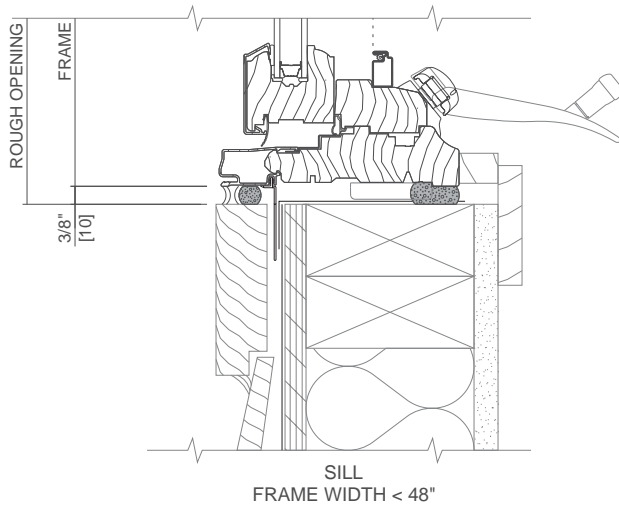
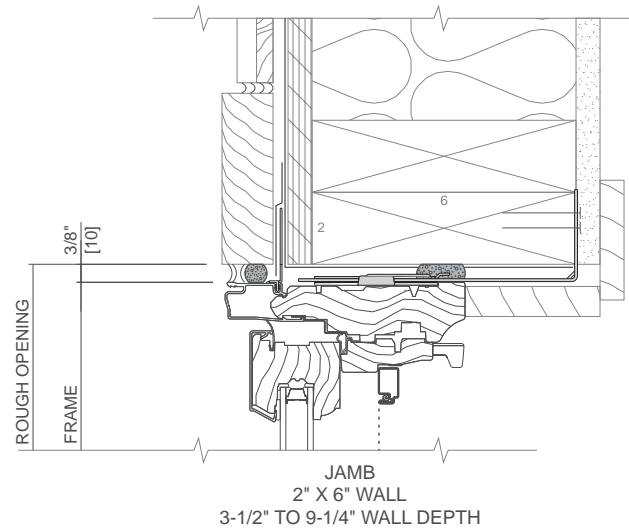
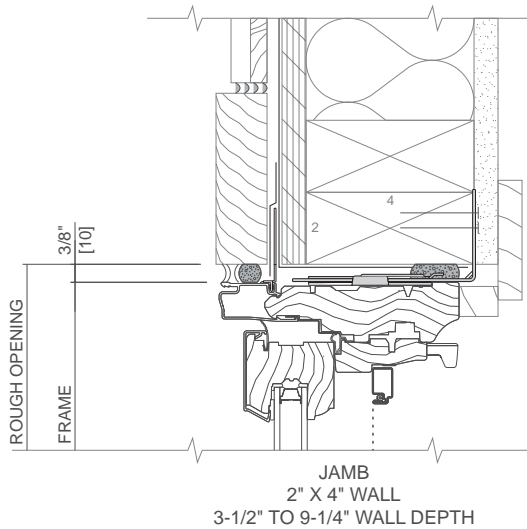
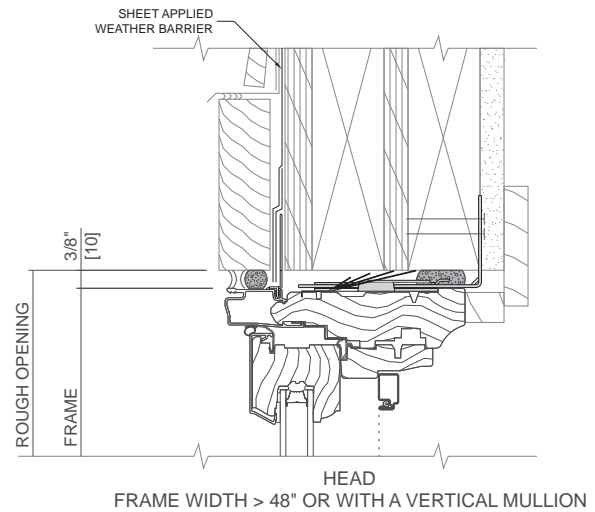
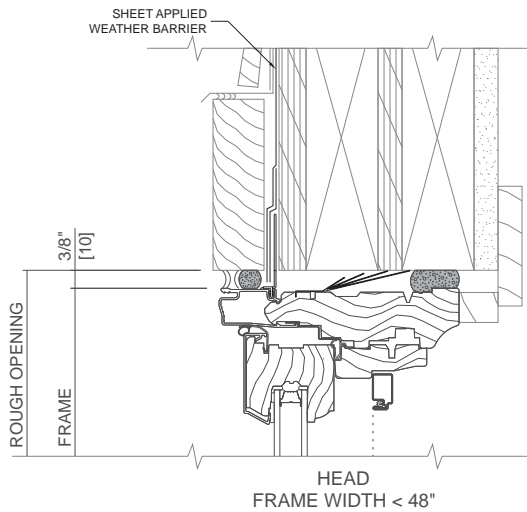
visit: <https://www.pella.com/professionals/steady-set/>

to learn how to efficiently install with uncompromising quality.



## Installation Details - Wood and Aluminum-Clad Wood Exterior

### Steady Set™ Installation - Casement with Wood Trim / Siding



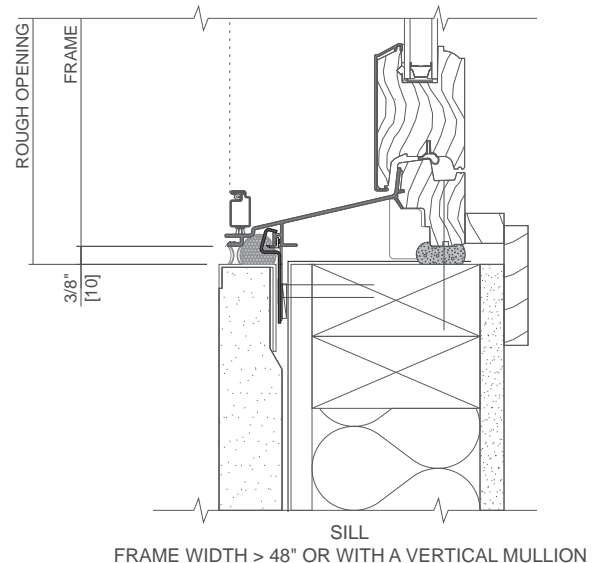
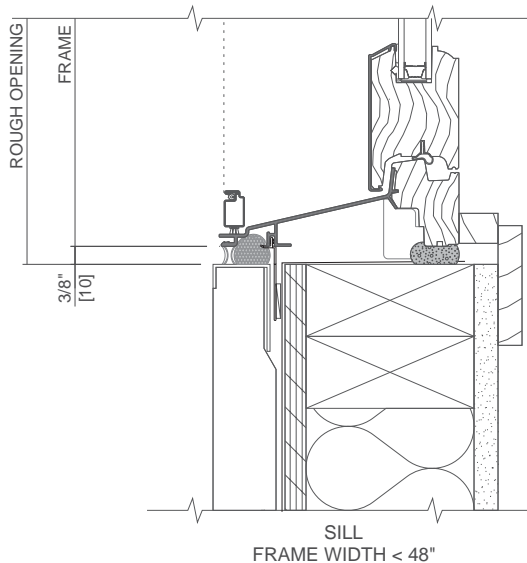
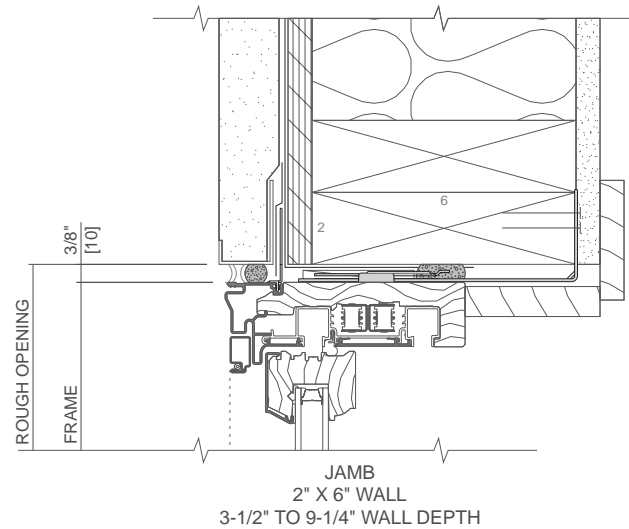
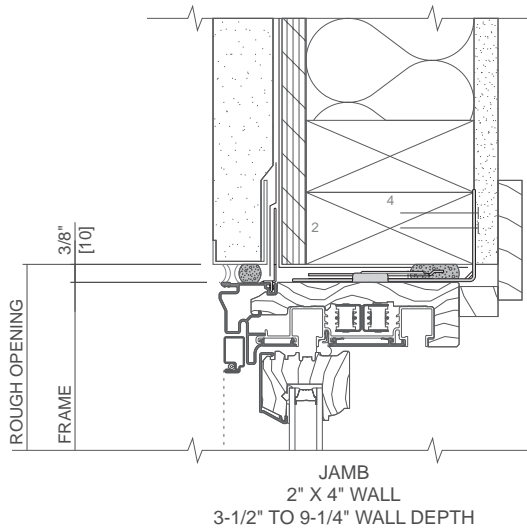
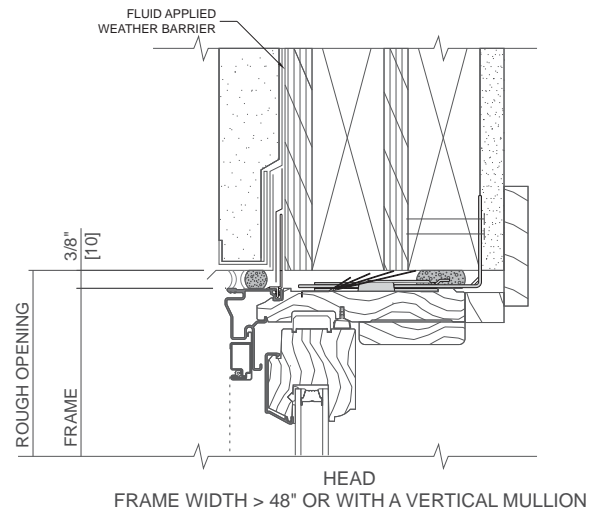
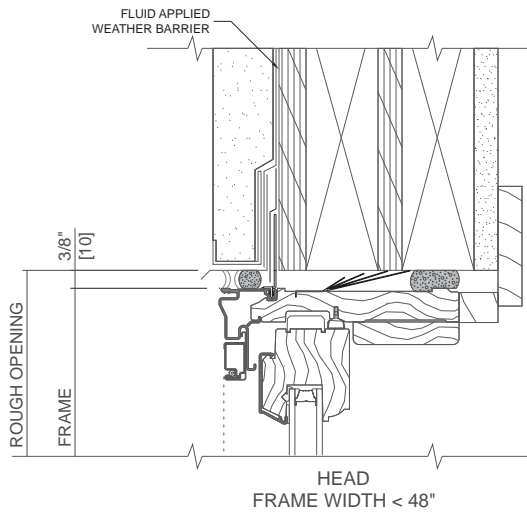
Scale 3" = 1' 0"

- These details are for typical single punch openings.
- Refer to the appropriate Pella® Installation Instruction for step-by-step instructions.



## Installation Details - Wood and Aluminum-Clad Wood Exterior

### Steady Set™ Installation - Double-Hung with Stucco



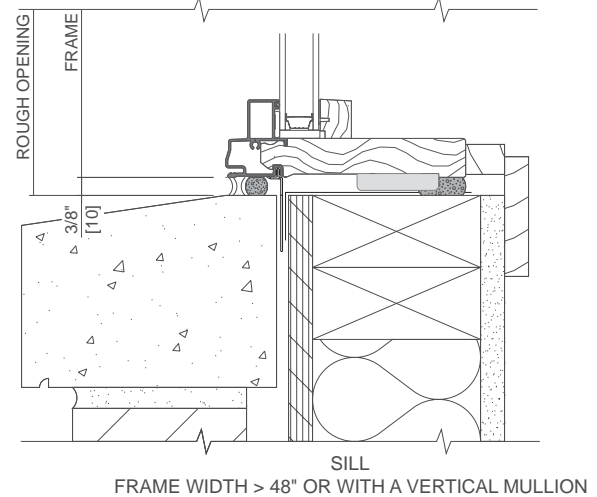
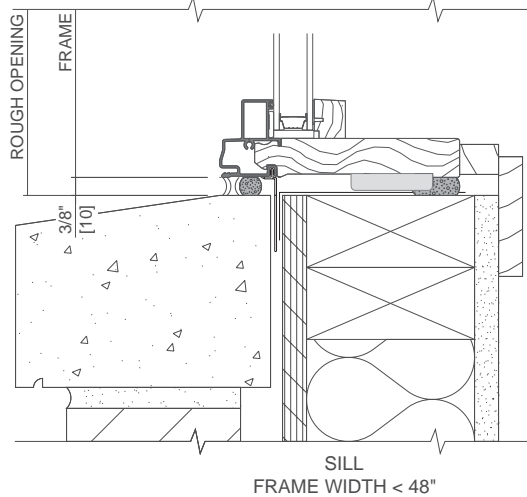
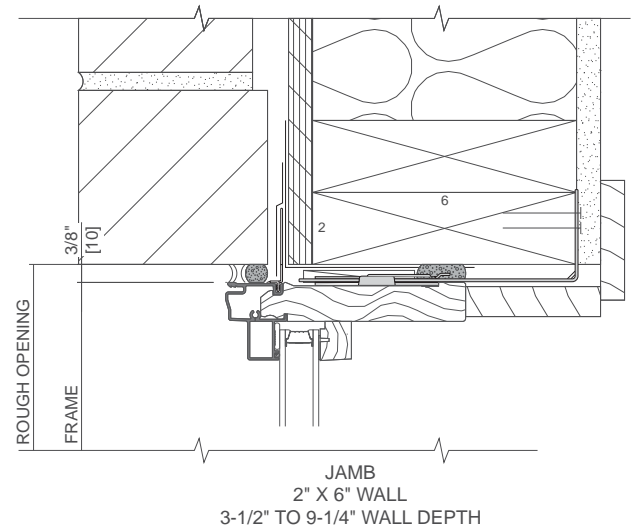
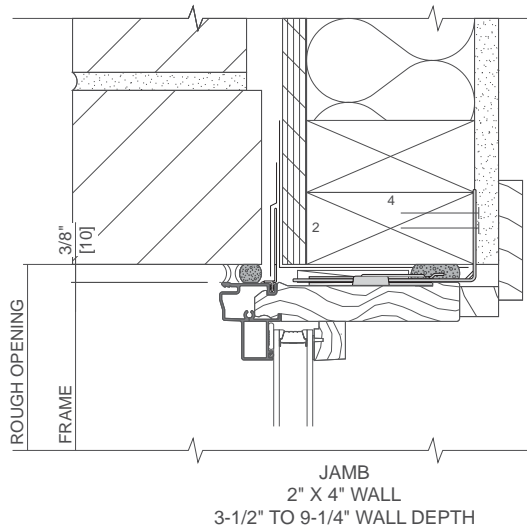
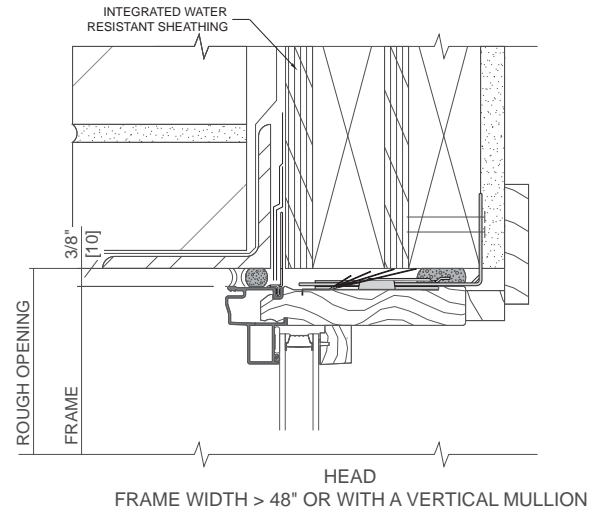
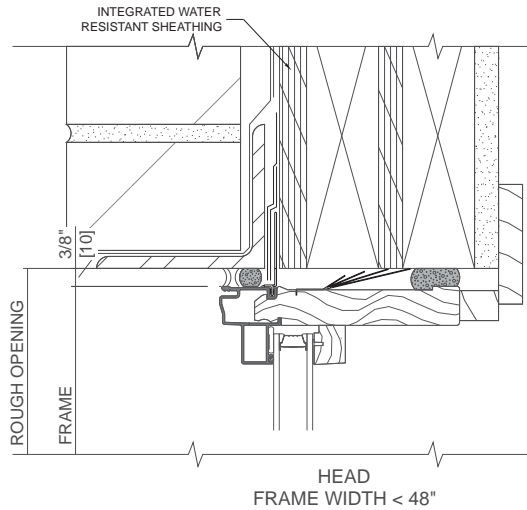
Scale 3" = 1' 0"

- These details are for typical single punch openings.
- Refer to the appropriate Pella® Installation Instruction for step-by-step instructions.



## Installation Details - Wood and Aluminum-Clad Wood Exterior

### Steady Set™ Installation - Fixed Frame Direct Set with Brick Veneer



Scale 3" = 1' 0"

- These details are for typical single punch openings.
- Refer to the appropriate Pella® Installation Instruction for step-by-step instructions.





### Fin Installation - General Notes

#### When to Use Fin Installation Method

This installation is best for construction methods that will permit the unit to be installed from the exterior prior to the lap siding or other similar material.

#### Products Available for This Installation

All Pella aluminum-clad windows and doors.

#### Important Installation Procedures

- When rigid insulation or other compressible sheathing is used, provide solid blocking for fin attachment.
- Shim unit in the opening, plumb level and square.
- Provide a primary and secondary air and water seal around the perimeter of the unit.
- **Primary Seal**—Seal the unit to the exterior finish material.
- **Secondary Seal**—Apply Pella SmartFlash™ foil backed butyl window and door flashing tape (or equivalent) at rough opening sill and over installation fins at head and jambs in watershed order. See product installation instructions for detailed directions.
- **Interior Air Seal**—Apply around the perimeter of the unit by applying a 1" deep bead of Low expansion, low pressure polyurethane insulating window and door foam sealant - (DO NOT use high pressure or latex foams).
- Commercial and/or large complex combination assemblies may require additional installation design considerations and attachments. See the Combination Recommendations sections of this manual.
- See previous page for typical sealant placement details.

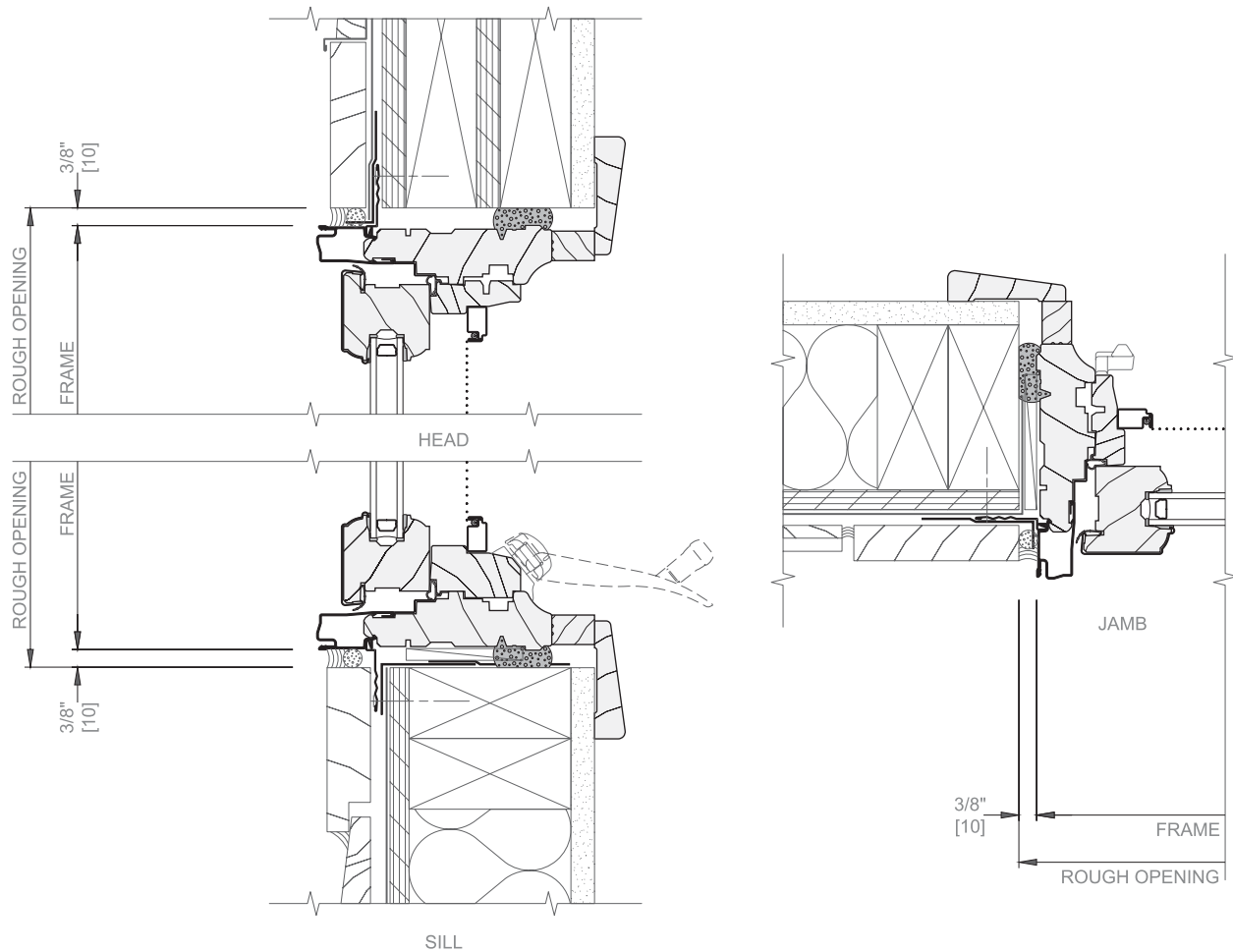
#### Notes

- Details shown are not intended to reflect complete installation procedures, however they do reflect basic installation concepts. Refer to window and door installation instructions provided with the product for complete installation instructions.
- Details show various wall systems with different Pella products. Details with other Pella products in the same wall construction should be similar.
- Figures in parentheses following or adjacent to dimensions are International (metric) equivalents in millimeters. For metric equivalents other than those shown, multiply dimensions in inches by 25.4.
- Your local Pella sales representative can assist with other more complex and unique applications.



## Installation Details - Wood and Aluminum-Clad Wood Exterior

### Fin Installation - Casement with Wood Trim / Siding



#### WATER RESISTANT BARRIER BY OTHERS

Continuous water-resistive barrier attached to the wall sheathing.

#### FLASHING BY OTHERS

Metal head flashing.

#### SMARTFLASH® INSTALLATION TAPE

Integrate the window and door flashing tape into the wall system.

SHIM AND PLUMB UNITS AS REQUIRED BY OTHERS.

#### INSTALLATION FIN #42G7

Attach unit to wall construction with nails or screws at each pre-punched hole in the installation fin.

#### PELLA WINDOW AND DOOR INSTALLATION SEALANT AND WATER RESISTANT BACKER ROD.

Apply continuous sealant according to label directions and ASTM C1193.

**LOW EXPANSION, LOW PRESSURE POLYURETHANE INSULATING WINDOW AND DOOR FOAM SEALANT - (DO NOT USE HIGH PRESSURE OR LATEX FOAMS).**

Apply a continuous 1" bead of insulating foam to provide a full interior seal.

**JAMB EXTENSION #283G (OPTIONAL)**

**PELLA 2-1/2" RANCH-1 TRIM (#30AY) (OPTIONAL)**

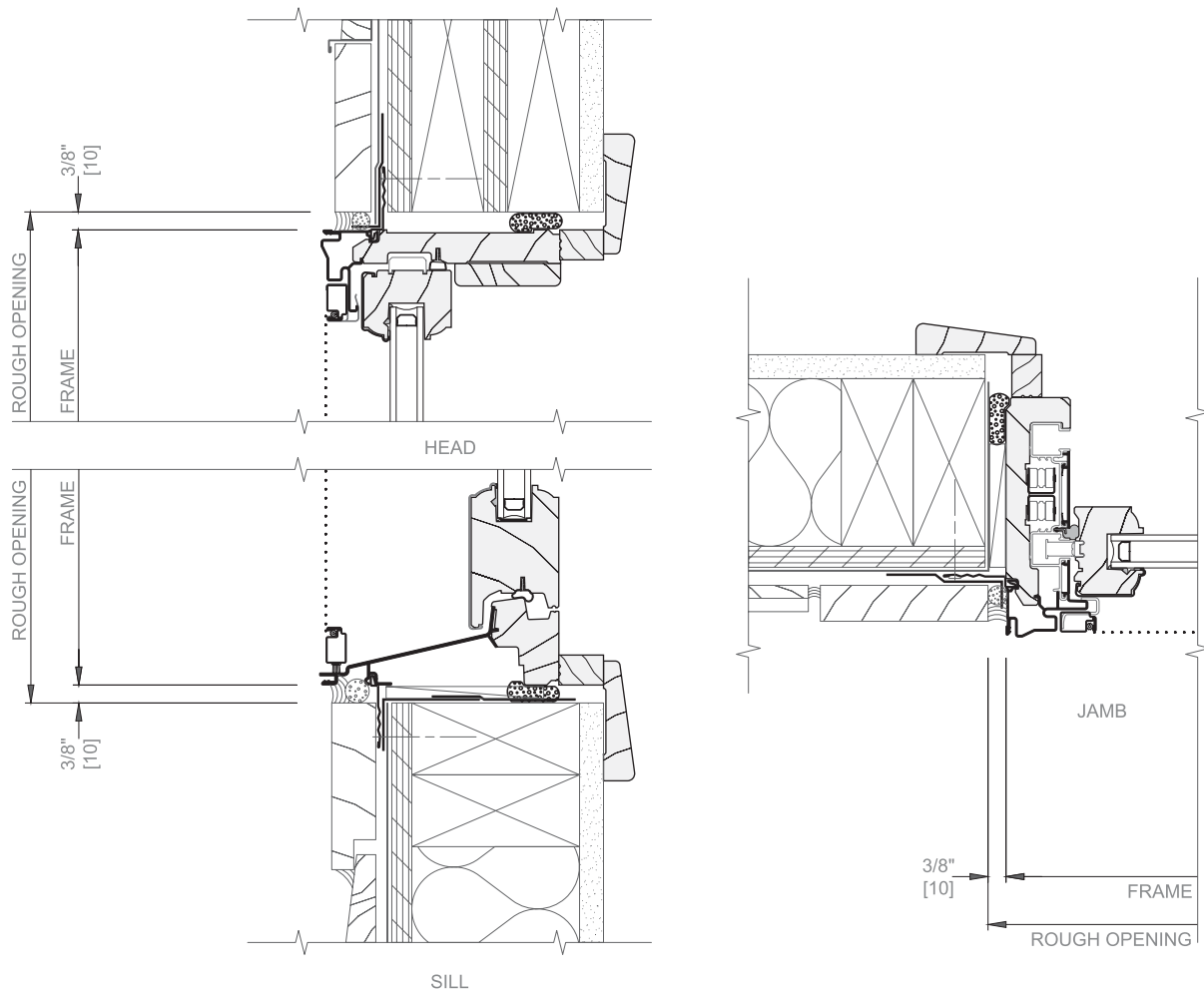
Scale 3" = 1' 0"

- Items in bold are available from Pella.
- These details are for typical single punch openings.
- Refer to the appropriate Pella® Installation Instruction for step-by-step instructions.



## Installation Details - Wood and Aluminum-Clad Wood Exterior

### Fin Installation - Double-Hung with Wood Trim / Siding



#### WATER-RESISTANT BARRIER BY OTHERS

Continuous water-resistive barrier attached to the wall sheathing.

#### FLASHING BY OTHERS

Metal head flashing.

#### SMARTFLASH® INSTALLATION TAPE

Integrate the window and door flashing tape into the wall system.

#### SHIM AND PLUMB UNITS AS REQUIRED BY OTHERS.

#### INSTALLATION FIN #42G7

Attach unit to wall construction with nails or screws at each pre-punched hole in the installation fin.

#### PELLA WINDOW AND DOOR INSTALLATION SEALANT AND WATER RESISTANT BACKER ROD.

Apply continuous sealant according to label directions and ASTM C1193.

#### LOW EXPANSION, LOW PRESSURE POLYURETHANE INSULATING WINDOW AND DOOR FOAM SEALANT - (DO NOT USE HIGH PRESSURE OR LATEX FOAMS).

Apply a continuous 1" bead of insulating foam to provide a full interior seal.

#### JAMB EXTENSION #283G (OPTIONAL)

#### PELLA 2-1/2" RANCH-1 TRIM (#30AY) (OPTIONAL)

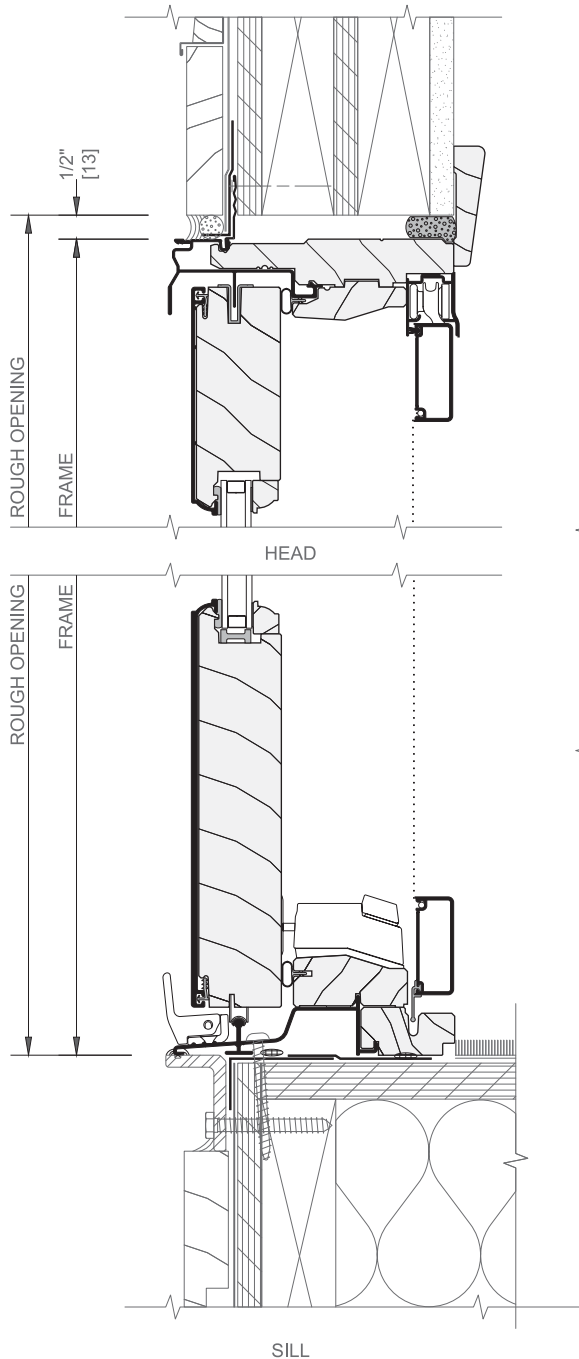
Scale 3" = 1' 0"

- Items in bold are available from Pella.
- These details are for typical single punch openings.
- Refer to the appropriate Pella® Installation Instruction for step-by-step instructions.



## Installation Details - Wood and Aluminum-Clad Wood Exterior

### Fin Installation - Sliding Door with Wood Trim / Siding



#### WATER-RESISTANT BARRIER BY OTHERS

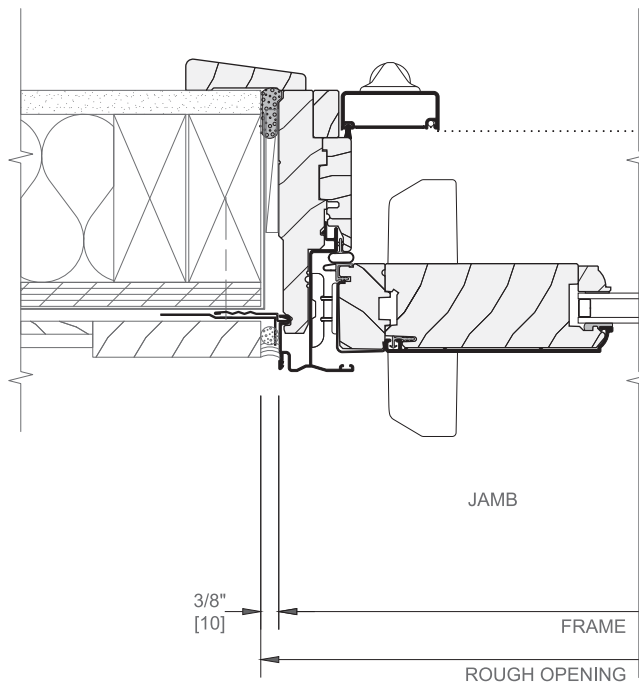
Continuous water-resistive barrier attached to the wall sheathing.

#### FLASHING BY OTHERS

Metal head flashing.

#### SMARTFLASH® INSTALLATION TAPE

Integrate the window and door flashing tape into the wall system.



#### PELLA WINDOW AND DOOR INSTALLATION SEALANT AND WATER RESISTANT BACKER ROD.

Apply continuous sealant according to label directions and ASTM C1193.

#### LOW EXPANSION, LOW PRESSURE POLYURETHANE INSULATING WINDOW AND DOOR FOAM SEALANT - (DO NOT USE HIGH PRESSURE OR LATEX FOAMS).

Apply a continuous 1" bead of insulating foam to provide a full interior seal.

#### ALUMINUM SILL SUPPORT

OR

2" X 4" WOOD BLOCKING BY OTHERS

#### PELLA 2-1/2" RANCH-1 TRIM (#30AY) (OPTIONAL)

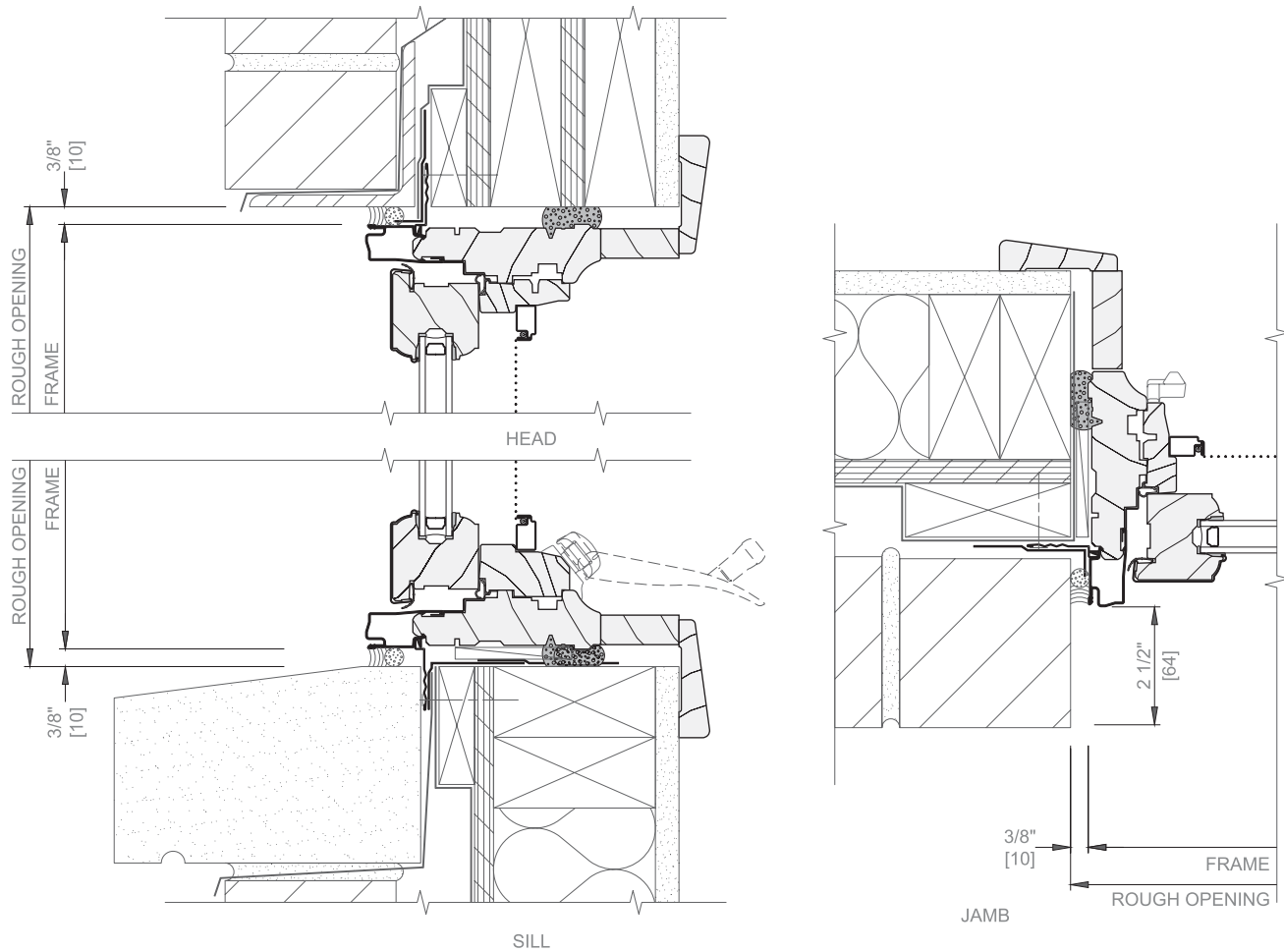
Scale 3" = 1' 0"

- Items in bold are available from Pella.
- These details are for typical single punch openings.
- Refer to the appropriate Pella® Installation Instruction for step-by-step instructions.



## Installation Details - Wood and Aluminum-Clad Wood Exterior

### Fin Installation - Casement with Brick Veneer



#### **WATER-RESISTANT BARRIER BY OTHERS**

Continuous water-resistive barrier attached to the wall sheathing.

#### **JAMB EXTENSION #283G (OPTIONAL)**

#### **SMARTFLASH® INSTALLATION TAPE**

Integrate the window and door flashing tape into the wall system.

#### **PELLA 2-1/2" RANCH-1 TRIM (#30AY) (OPTIONAL)**

#### **INSTALLATION FIN #42G7**

Attach unit to wall construction with nails or screws at each pre-punched hole in the installation fin.

#### **PELLA WINDOW AND DOOR INSTALLATION SEALANT AND WATER RESISTANT BACKER ROD.**

Apply continuous sealant according to label directions and ASTM C1193.

#### **LOW EXPANSION, LOW PRESSURE POLYURETHANE INSULATING WINDOW AND DOOR FOAM SEALANT - (DO NOT USE HIGH PRESSURE OR LATEX FOAMS).**

Apply a continuous 1" bead of insulating foam to provide a full interior seal.

#### **THROUGH-WALL CAVITY FLASHING WITH WEEPS AT HEAD AND SILL BY OTHERS.**

Brick return at jamb to close cavity and provide backing for backer rod and sealant. See page W-ID-10 for alternate detail.

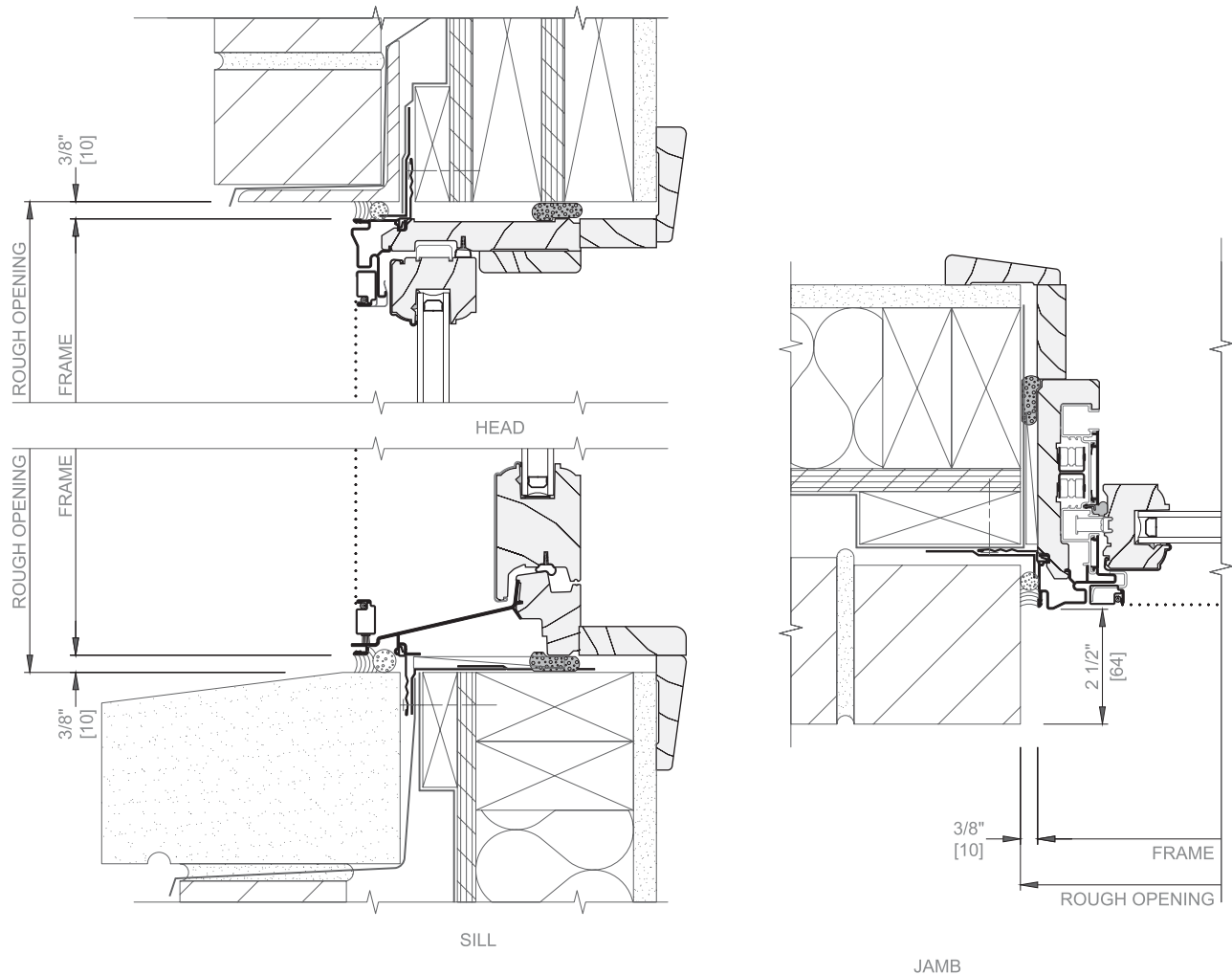
Scale 3" = 1' 0"

- Items in bold are available from Pella.
- These details are for typical single punch openings.
- Refer to the appropriate Pella® Installation Instruction for step-by-step instructions.



## Installation Details - Wood and Aluminum-Clad Wood Exterior

### Fin Installation- Double-Hung with Brick Veneer



#### **WATER-RESISTANT BARRIER BY OTHERS**

Continuous water-resistive barrier attached to the wall sheathing.

#### **JAMB EXTENSION #283G (OPTIONAL)**

#### **SMARTFLASH® INSTALLATION TAPE**

Integrate the window and door flashing tape into the wall system.

#### **PELLA 2-1/2" RANCH-1 TRIM (#30AY) (OPTIONAL)**

#### **INSTALLATION FIN #42G7**

Attach unit to wall construction with nails or screws at each pre-punched hole in the installation fin.

#### **PELLA WINDOW AND DOOR INSTALLATION SEALANT AND WATER RESISTANT BACKER ROD.**

Apply continuous sealant according to label directions and ASTM C1193.

#### **LOW EXPANSION, LOW PRESSURE POLYURETHANE INSULATING WINDOW AND DOOR FOAM SEALANT - (DO NOT USE HIGH PRESSURE OR LATEX FOAMS).**

Apply a continuous 1" bead of insulating foam to provide a full interior seal.

#### **THROUGH-WALL CAVITY FLASHING WITH WEEPS AT HEAD AND SILL BY OTHERS.**

Add blocking at jamb to close cavity and provide backing for backer rod and sealant.

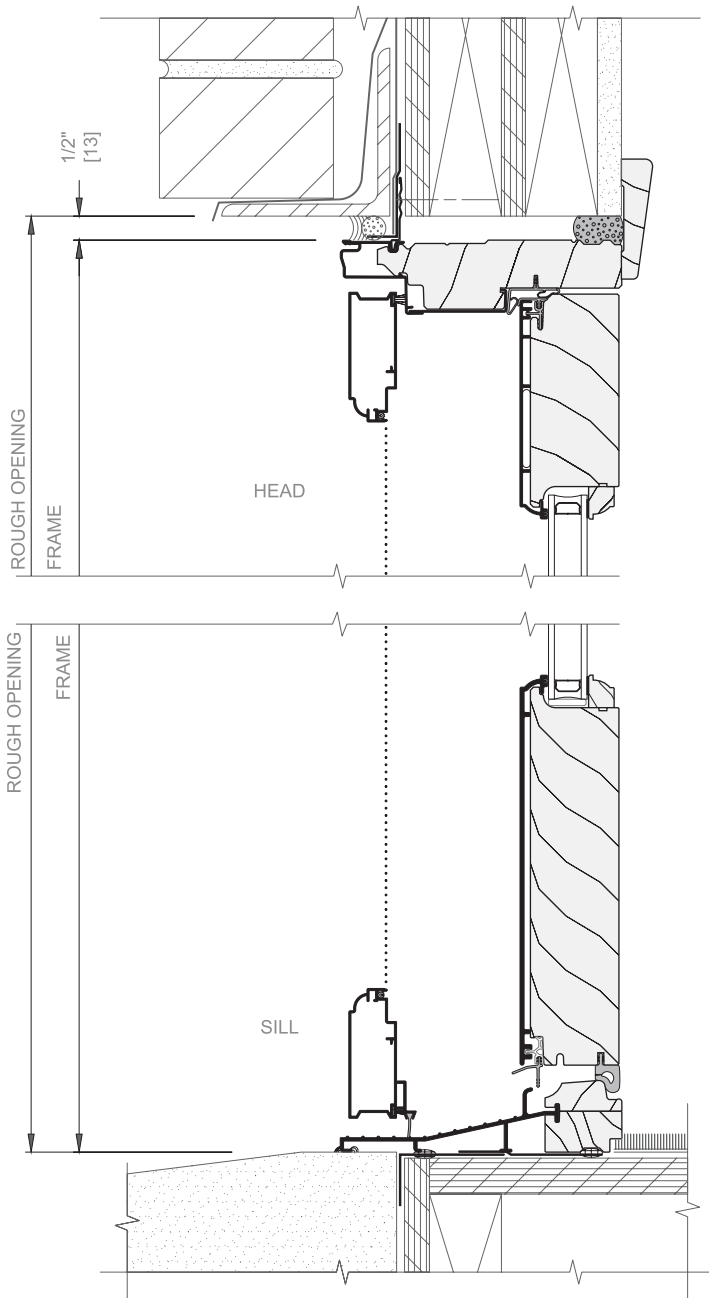
Scale 3" = 1' 0"

- Items in bold are available from Pella.
- These details are for typical single punch openings.
- Refer to the appropriate Pella® Installation Instruction for step-by-step instructions.



## Installation Details - Wood and Aluminum-Clad Wood Exterior

### Fin Installation - Hinged Door with Brick Veneer



#### WATER-RESISTANT BARRIER BY OTHERS

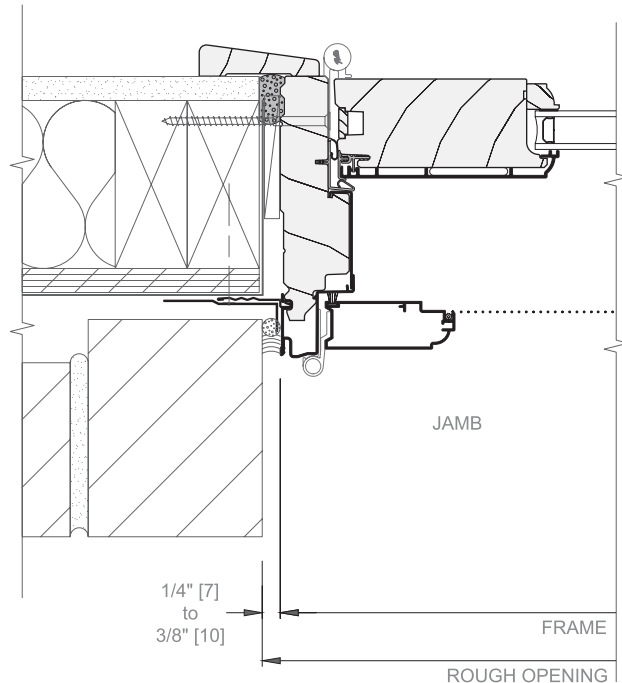
Continuous water-resistive barrier attached to the wall sheathing.

#### SMARTFLASH® INSTALLATION TAPE

Integrate the window and door flashing tape into the wall system.

#### INSTALLATION FIN #42G7

Attach unit to wall construction with nails or screws at each pre-punched hole in the installation fin.



#### PELLA WINDOW AND DOOR INSTALLATION SEALANT AND WATER RESISTANT BACKER ROD.

Apply continuous sealant according to label directions and ASTM C1193.

#### LOW EXPANSION, LOW PRESSURE POLYURETHANE INSULATING WINDOW AND DOOR FOAM SEALANT - (DO NOT USE HIGH PRESSURE OR LATEX FOAMS).

Apply a continuous 1" bead of insulating foam to provide a full interior seal.

#### PELLA 2-1/2" RANCH-1 TRIM (#30AY) (OPTIONAL)

#### THROUGH-WALL CAVITY FLASHING WITH WEEPS AT HEAD AND SILL BY OTHERS.

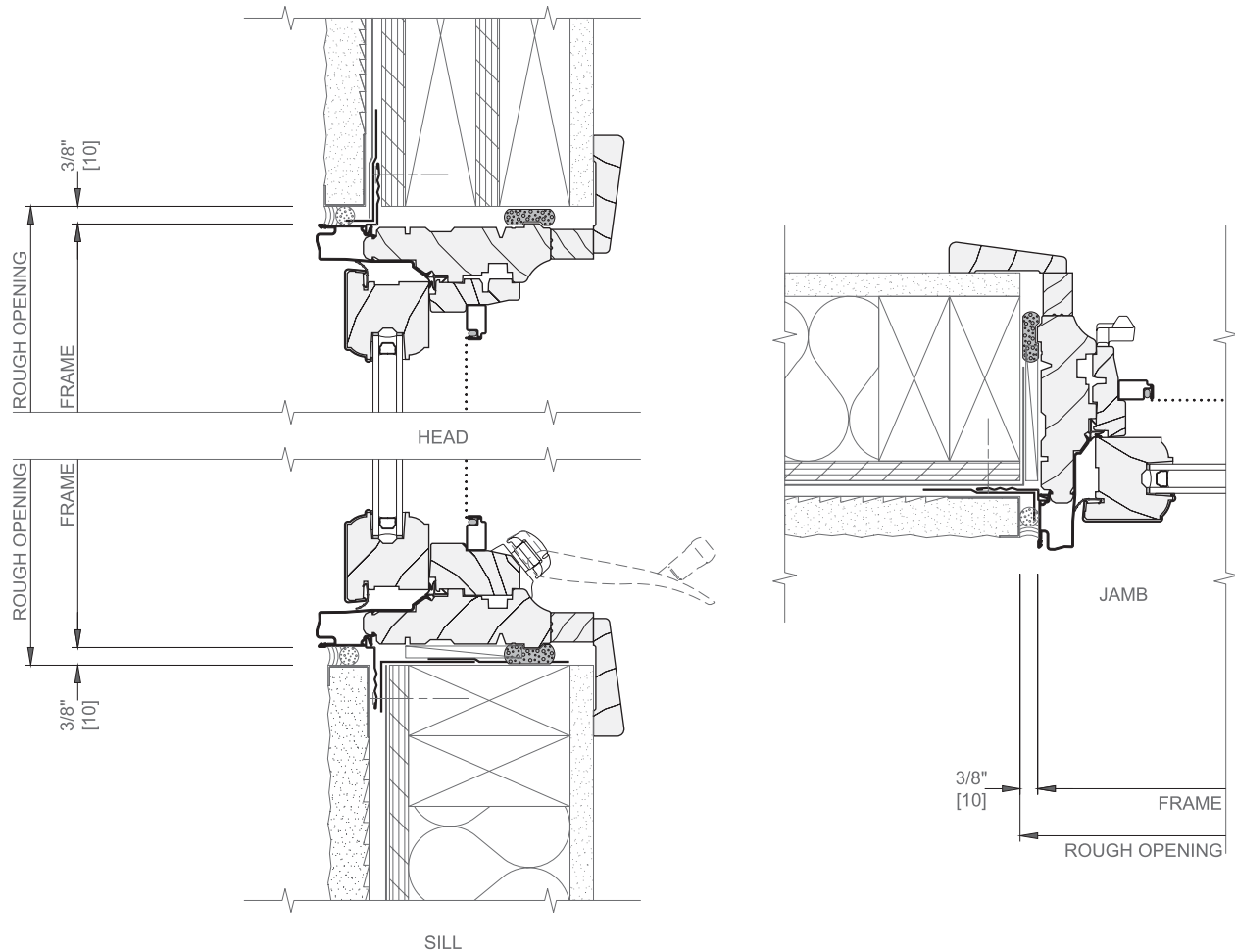
Brick return at jamb to close cavity and provide backing for backer rod and sealant. See page W-ID-10 for alternate detail.

Scale 3" = 1' 0"

- Items in bold are available from Pella.
- These details are for typical single punch openings.
- Refer to the appropriate Pella® Installation Instruction for step-by-step instructions.



## Fin Installation - Casement with Stucco



### WATER-RESISTANT BARRIER BY OTHERS

Continuous water-resistive barrier attached to the wall sheathing.

### SMARTFLASH® INSTALLATION TAPE

Integrate the window and door flashing tape into the wall system.

### INSTALLATION FIN #42G7

Attach unit to wall construction with nails or screws at each pre-punched hole in the installation fin.

### STUCCO J-MOLD BY OTHERS

### PELLA WINDOW AND DOOR INSTALLATION SEALANT AND WATER RESISTANT BACKER ROD.

Apply continuous sealant according to label directions and ASTM C1193.

### LOW EXPANSION, LOW PRESSURE POLYURETHANE INSULATING WINDOW AND DOOR FOAM SEALANT - (DO NOT USE HIGH PRESSURE OR LATEX FOAMS).

Apply a continuous 1" bead of insulating foam to provide a full interior seal.

### JAMB EXTENSION #283G (OPTIONAL)

### PELLA 2-1/2" RANCH-1 TRIM (#30AY) (OPTIONAL)

NOTE: THESE DETAILS REFLECT GENERAL INSTALLATION CONCEPTS FOR TYPICAL CONSTRUCTION WITH WATER-MANAGED STUCCO PRODUCTS. DUE TO THE NUMBER OF DIFFERENT SYSTEMS AVAILABLE, NO ATTEMPT HAS BEEN MADE TO SHOW SPECIFIC FLASHING OR DRAINAGE DETAILS. CONSULT THE STUCCO MANUFACTURER FOR SPECIFIC DETAILING REQUIRED FOR THEIR WATER-MANAGED SYSTEM.

Scale 3" = 1' 0"

- Items in bold are available from Pella.
- These details are for typical single punch openings.
- Refer to the appropriate Pella® Installation Instruction for step-by-step instructions.

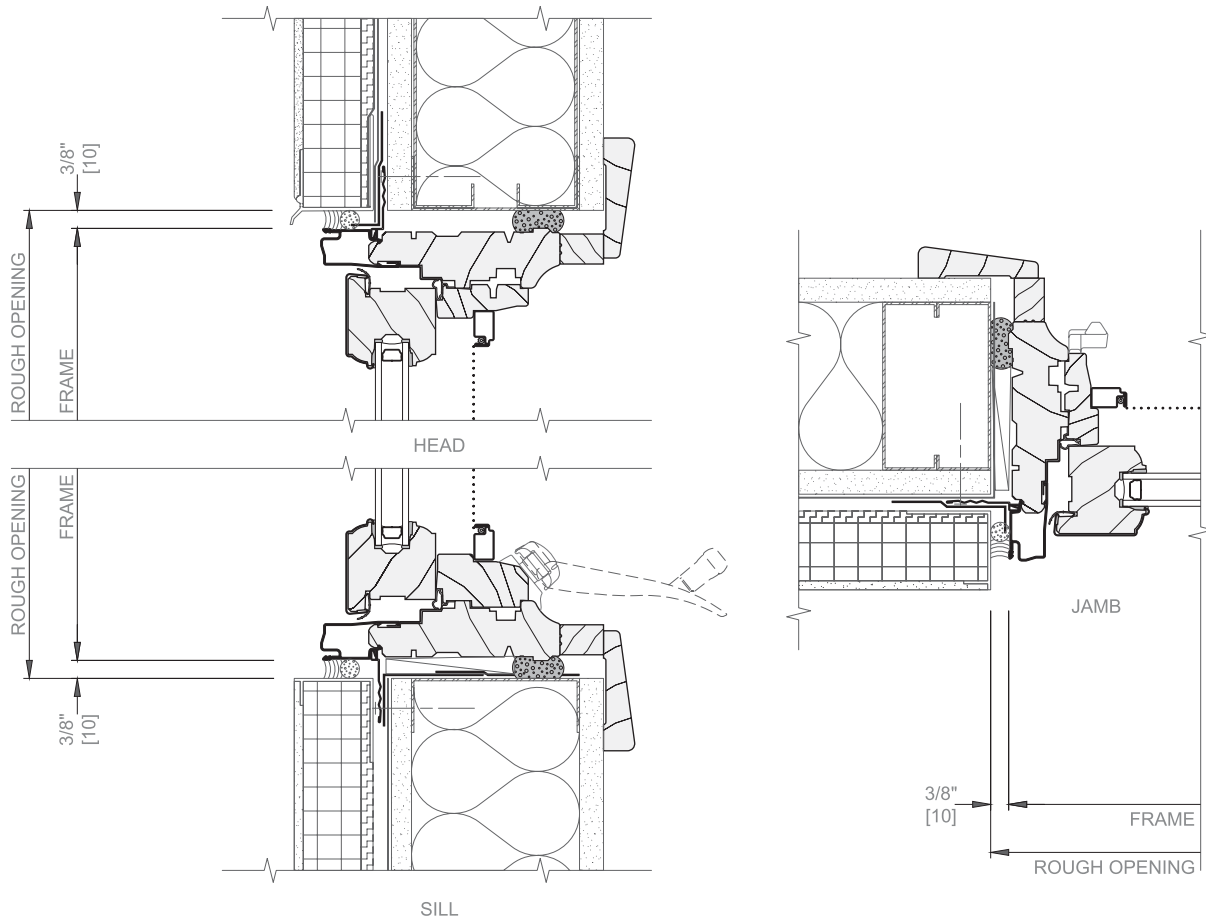




## Installation Details - Wood and Aluminum-Clad Wood Exterior

### Fin Installation - Casement with Water-Managed EIFS

**IMPORTANT NOTE:** These details reflect general installation concepts for typical construction with water-managed EIFS systems only. Consult EIFS manufacturer for specific detailing required for their water-managed system. Moisture problems, including unacceptable water infiltration, have been associated with barrier wall systems, such as EIFS (also known as synthetic stucco). Pella® products should not be used in barrier (non-water managed) EIFS systems unless Pella's current, recommended installation procedures for installation of windows and doors into EIFS are used. Any other use of Pella products with barrier EIFS systems will void the Limited Warranty. Contact your local Pella representative for consideration with non-water managed EIFS systems. See Section C for additional information on barrier EIFS and other non-water managed wall systems.



#### WATER-RESISTANT BARRIER BY OTHERS

Continuous water-resistive barrier attached to the wall sheathing.

#### SMARTFLASH® INSTALLATION TAPE

Integrate the window and door flashing tape into the wall system.

#### INSTALLATION FIN #42G7

Attach unit to wall construction with nails or screws at each pre-punched hole in the installation fin.

#### EIFS J-MOLD BY OTHERS

#### FLASHING BY OTHERS

Metal head drip or sill flashing.

#### PELLA WINDOW AND DOOR INSTALLATION SEALANT AND WATER RESISTANT BACKER ROD.

Apply continuous sealant according to label directions and ASTM C1193.

#### LOW EXPANSION, LOW PRESSURE POLYURETHANE INSULATING WINDOW AND DOOR FOAM SEALANT - (DO NOT USE HIGH PRESSURE OR LATEX FOAMS).

Apply a continuous 1" bead of insulating foam to provide a full interior seal.

#### JAMB EXTENSION #283G (OPTIONAL)

#### PELLA 2-1/2" RANCH-1 TRIM (#30AY) (OPTIONAL)

Scale 3" = 1' 0"

- Items in bold are available from Pella.
- These details are for typical single punch openings.
- Refer to the appropriate Pella® Installation Instruction for step-by-step instructions.



### Installation Clip - General Notes

#### When to Use Clip Installation Method

- When there is no place to fold out a fin for nailing.
- In applications where construction sequence dictates units be installed from the interior, or after the wall system is completely constructed.
- When direct mulled window combination assemblies are greater than 10' wide or tall.

#### Products Available for This Installation

All Pella aluminum-clad windows and doors.

#### Important Installation Procedures

- Shim unit in the opening plumb, level and square.
- Provide a primary and secondary air and water seal around the perimeter of the unit.
- **Primary Seal**—Seal the unit to the exterior finish material.
- **Secondary Seal**—Provide an interior seal around the perimeter of the unit by applying a 1" deep bead of Low expansion, low pressure polyurethane insulating window and door foam sealant - (DO NOT use high pressure or latex foams).
- Clips must be attached to wall framing with anchors adequate for design pressure specified. Wall framing around window opening must also be adequate to withstand wind loads transferred from window combination assembly.
- Suggested unit setback is intended as good construction practice to protect window products from water cascading down building facade. Setback must also take into consideration adequate sealant adhesion to the brick veneer.
- See the Installation Accessories section for anchor clip spacing.
- Commercial and/or large complex combination assemblies may require additional installation design considerations and attachments. See the Combination Recommendations section.
- See page F-4 for typical sealant placement details.

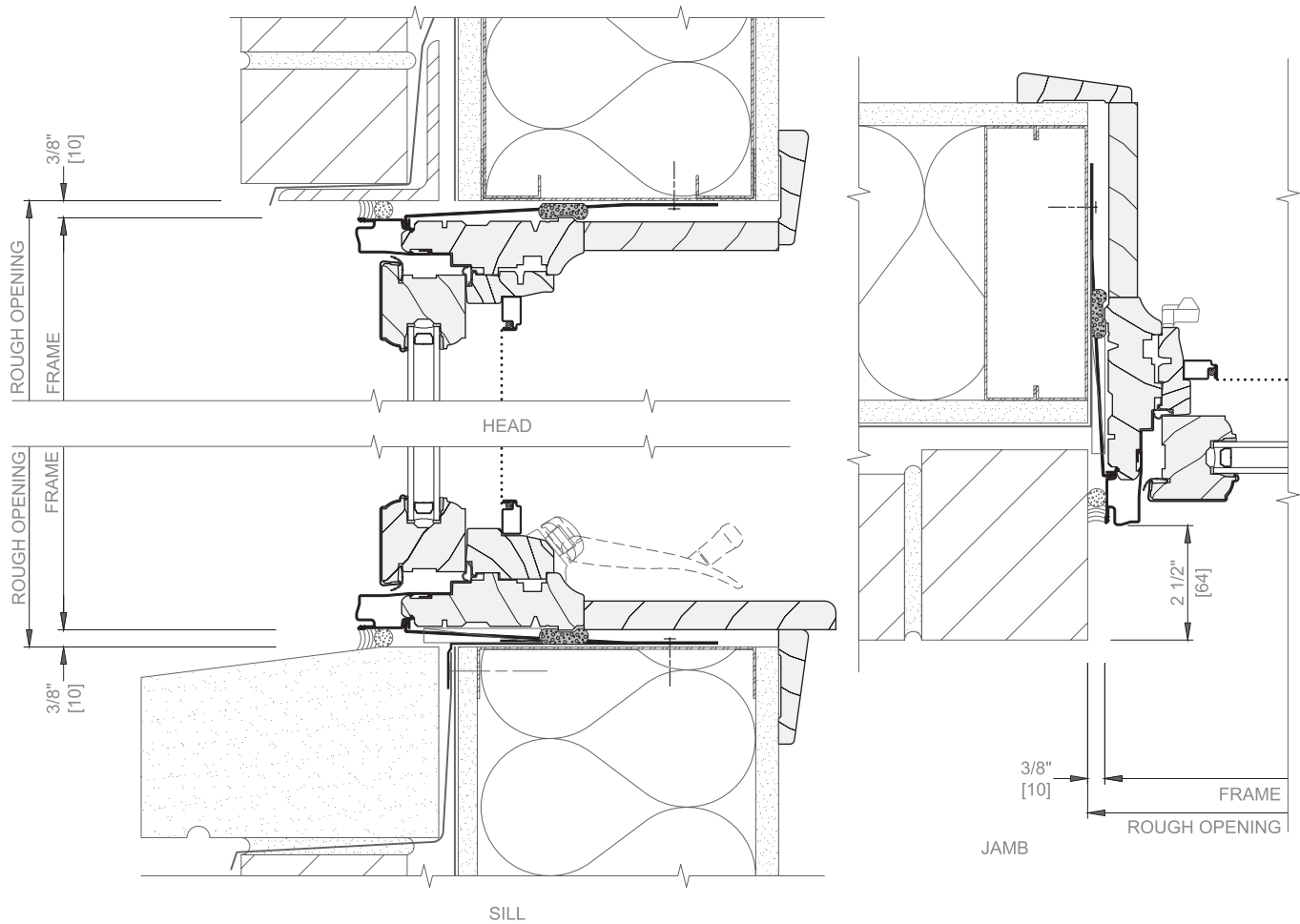
#### NOTES

- Details shown are not intended to reflect complete installation procedures, but do reflect basic installation concepts.
- Details show various wall systems with different Pella products. Details with other Pella products in the same wall construction should be similar.
- See your local Pella sales representative for clip installation instructions.



## Installation Details - Wood and Aluminum-Clad Wood Exterior

### Clip Installation Details - Casement with Steel Studs and Brick Veneer



#### **WATER-RESISTANT BARRIER BY OTHERS.**

Continuous water-resistive barrier attached to the wall sheathing.

#### **THROUGH-WALL CAVITY FLASHING WITH WEEPS AT HEAD AND SILL BY OTHERS.**

#### **SMARTFLASH® INSTALLATION TAPE**

Integrate the window and door flashing tape into the wall system.

#### **SHIM AND PLUMB UNITS AS REQUIRED BY OTHERS.**

#### **INSTALLATION CLIPS #5071**

Place into fin groove and anchor to wall construction. Ensure that the interior bead of insulating foam continues around clips.

#### **PELLA WINDOW AND DOOR INSTALLATION SEALANT AND WATER RESISTANT BACKER ROD.**

Apply continuous sealant according to label directions and ASTM C1193.

#### **PELLA 2-1/2" RANCH-1 TRIM (#30AY) (OPTIONAL)**

#### **LOW EXPANSION, LOW PRESSURE POLYURETHANE INSULATING WINDOW AND DOOR FOAM SEALANT - (DO NOT USE HIGH PRESSURE OR LATEX FOAMS)**

Apply a continuous 1" bead of insulating foam to provide a full interior seal.

Add blocking at jamb to close cavity and provide backing for backer rod and sealant. See page F-9 for alternate detail. Seal wall cavity around head and jamb of window's rough opening.

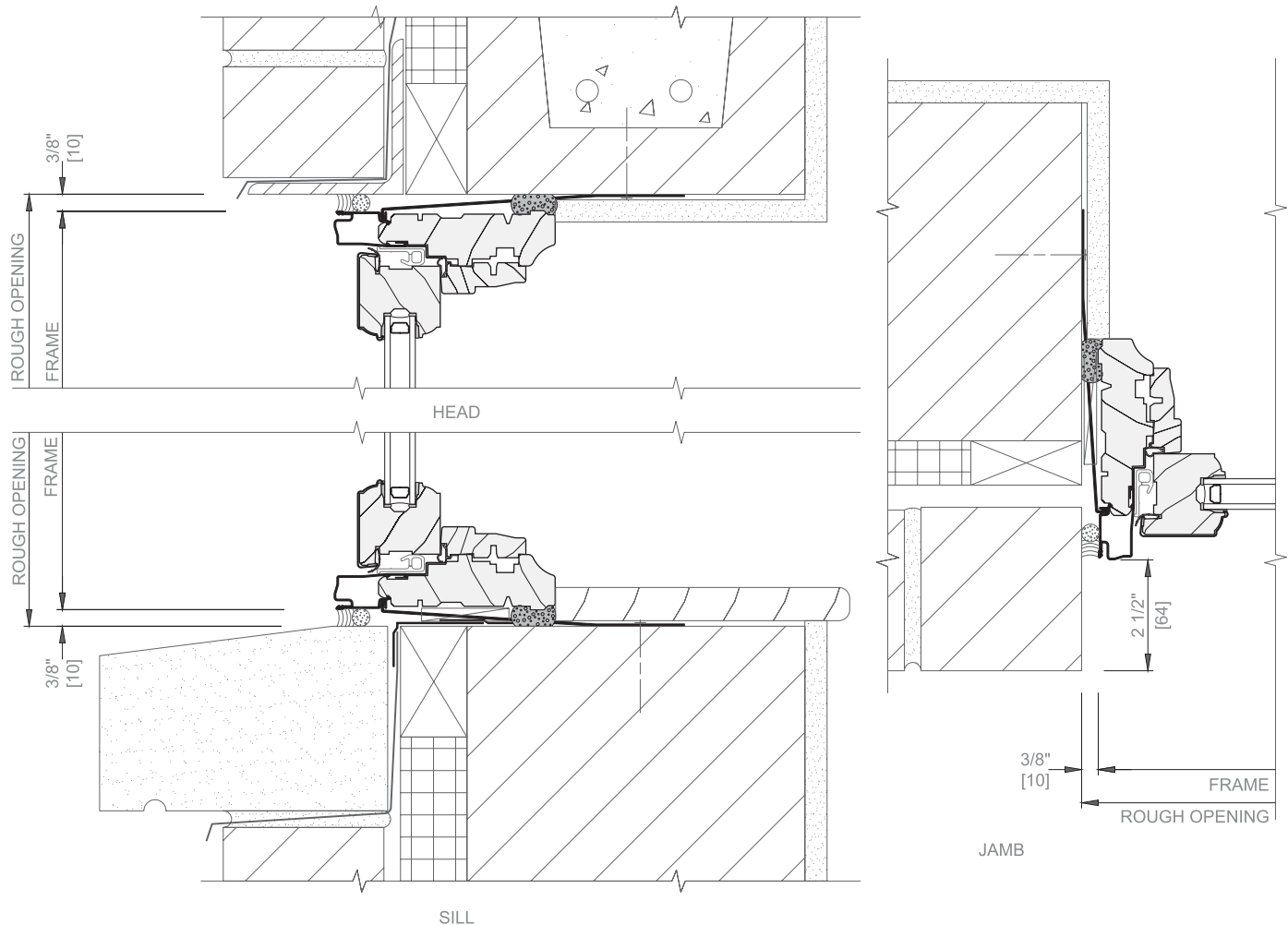
Scale 3" = 1' 0"

- Items in bold are available from Pella.
- These details are for typical single punch openings.
- Refer to the appropriate Pella® Installation Instruction for step-by-step instructions.



## Installation Details - Wood and Aluminum-Clad Wood Exterior

### Clip Installation Details - Casement with Concrete Block and Brick Veneer



#### WATER-RESISTANT BARRIER BY OTHERS.

Continuous water-resistive barrier attached to the wall sheathing.

#### THROUGH-WALL CAVITY FLASHING WITH WEEPS AT HEAD AND SILL BY OTHERS.

#### SMARTFLASH® INSTALLATION TAPE

Integrate the window and door flashing tape into the wall system.

#### SHIM AND PLUMB UNITS AS REQUIRED BY OTHERS.

#### INSTALLATION CLIPS #5071

Place into fin groove and anchor to wall construction. Ensure that the interior foam sealant continues around clips.

#### PELLA WINDOW AND DOOR INSTALLATION SEALANT AND WATER RESISTANT BACKER ROD.

Apply continuous sealant according to label directions and ASTM C1193.

#### LOW EXPANSION, LOW PRESSURE POLYURETHANE INSULATING WINDOW AND DOOR FOAM SEALANT - (DO NOT USE HIGH PRESSURE OR LATEX FOAMS)

Apply a continuous 1" bead of insulating foam to provide a full interior seal.

Add blocking at jamb to close cavity and provide backing for backer rod and sealant. See page F-9 for alternate detail. Seal wall cavity around perimeter of window's rough opening.

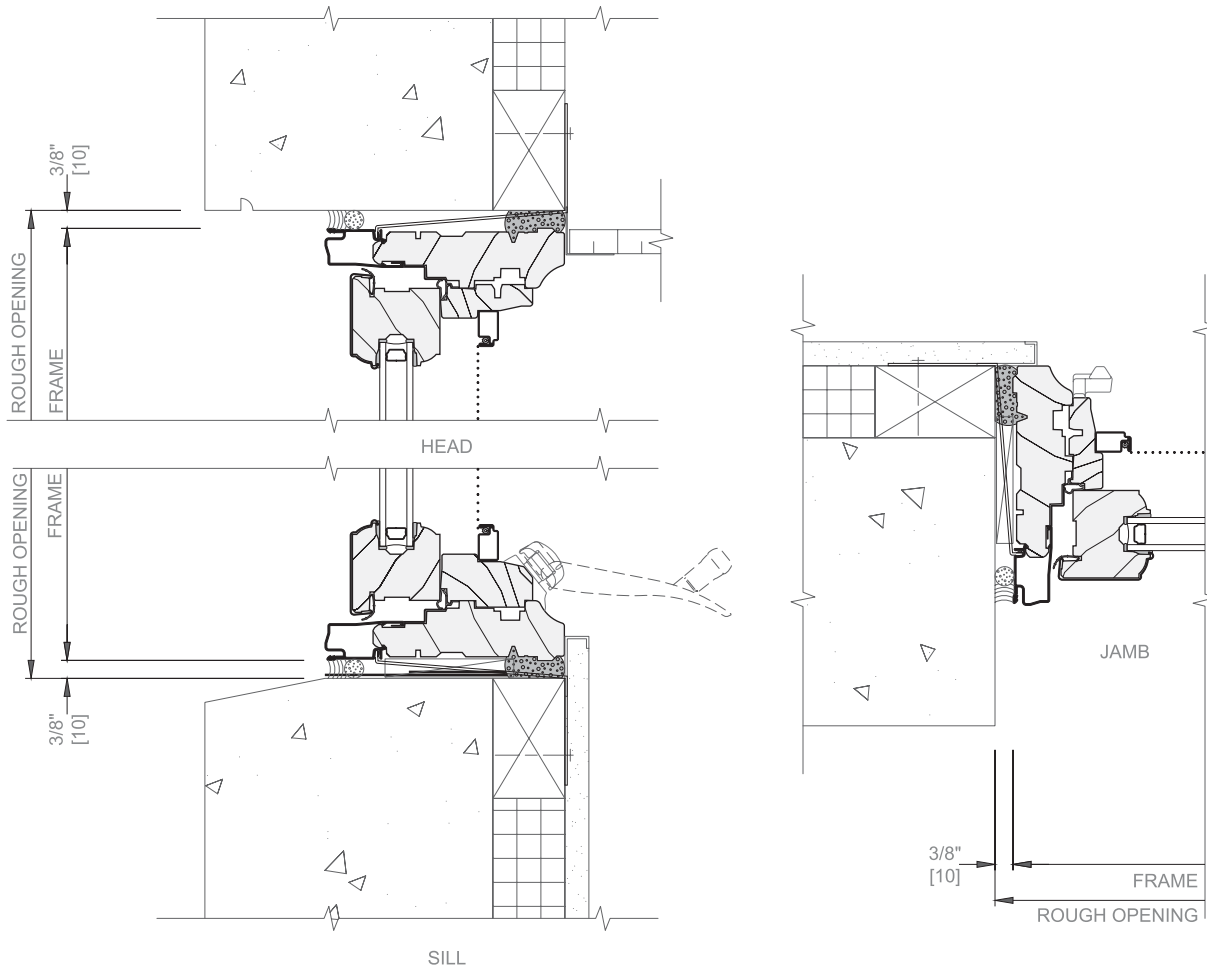
Scale 3" = 1' 0"

- Items in bold are available from Pella.
- These details are for typical single punch openings.
- Refer to the appropriate Pella® Installation Instruction for step-by-step instructions.



## Installation Details - Wood and Aluminum-Clad Wood Exterior

### Clip Installation Details - Casement with Precast Concrete



SHIM AND PLUMB UNITS AS REQUIRED BY OTHERS.

#### INSTALLATION CLIPS #5071

PELLA WINDOW AND DOOR INSTALLATION SEALANT AND WATER RESISTANT BACKER ROD.

Apply continuous sealant according to label directions and ASTM C1193.

**LOW EXPANSION, LOW PRESSURE POLYURETHANE INSULATING WINDOW AND DOOR FOAM SEALANT - (DO NOT USE HIGH PRESSURE OR LATEX FOAMS)**

Apply a continuous 1" bead of insulating foam to provide a full interior seal.

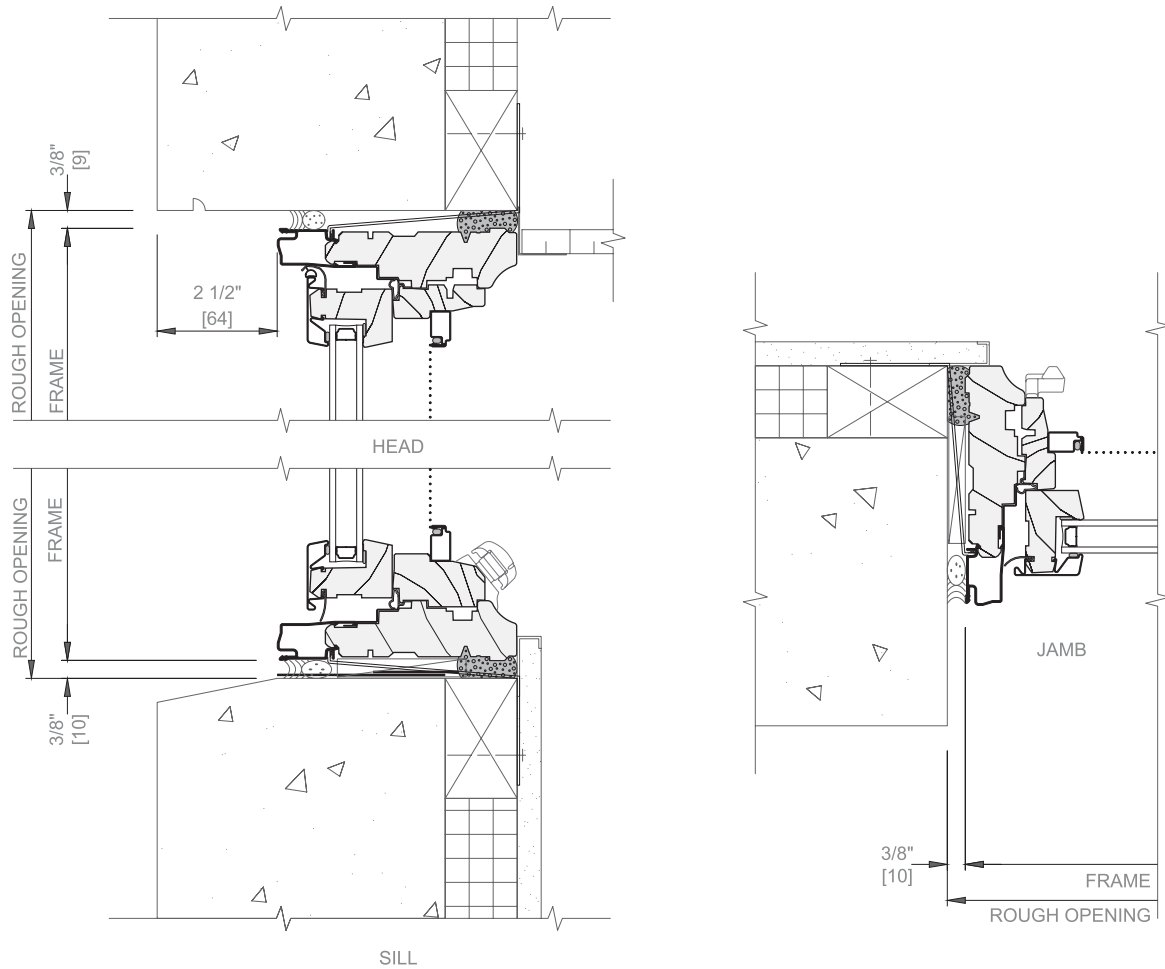
Scale 3" = 1' 0"

- Items in bold are available from Pella.
- These details are for typical single punch openings.
- Refer to the appropriate Pella® Installation Instruction for step-by-step instructions.



## Installation Details - Wood and Aluminum-Clad Wood Exterior

### Clip Installation Details - Casement with Precast Concrete



SHIM AND PLUMB UNITS AS REQUIRED BY OTHERS.

#### INSTALLATION CLIPS #5071

PELLA WINDOW AND DOOR INSTALLATION SEALANT AND WATER RESISTANT BACKER ROD.

Apply continuous sealant according to label directions and ASTM C1193.

**LOW EXPANSION, LOW PRESSURE POLYURETHANE INSULATING WINDOW AND DOOR FOAM SEALANT - (DO NOT USE HIGH PRESSURE OR LATEX FOAMS)**

Apply a continuous 1" bead of insulating foam to provide a full interior seal.

Scale 3" = 1' 0"

- Items in bold are available from Pella.
- These details are for typical single punch openings.
- Refer to the appropriate Pella® Installation Instruction for step-by-step instructions.



### Brickmould Installation - General Notes

#### When to Use Wood Brickmould Installation Method

- This installation is best for construction methods that will permit the unit to be installed prior to the exterior finish, i.e., lap siding or other similar material.
- Brickmould is typically attached to window or door frame prior to installation.

#### Products Available for This Installation

All Architect Series® wood units.

#### Important Installation Procedures

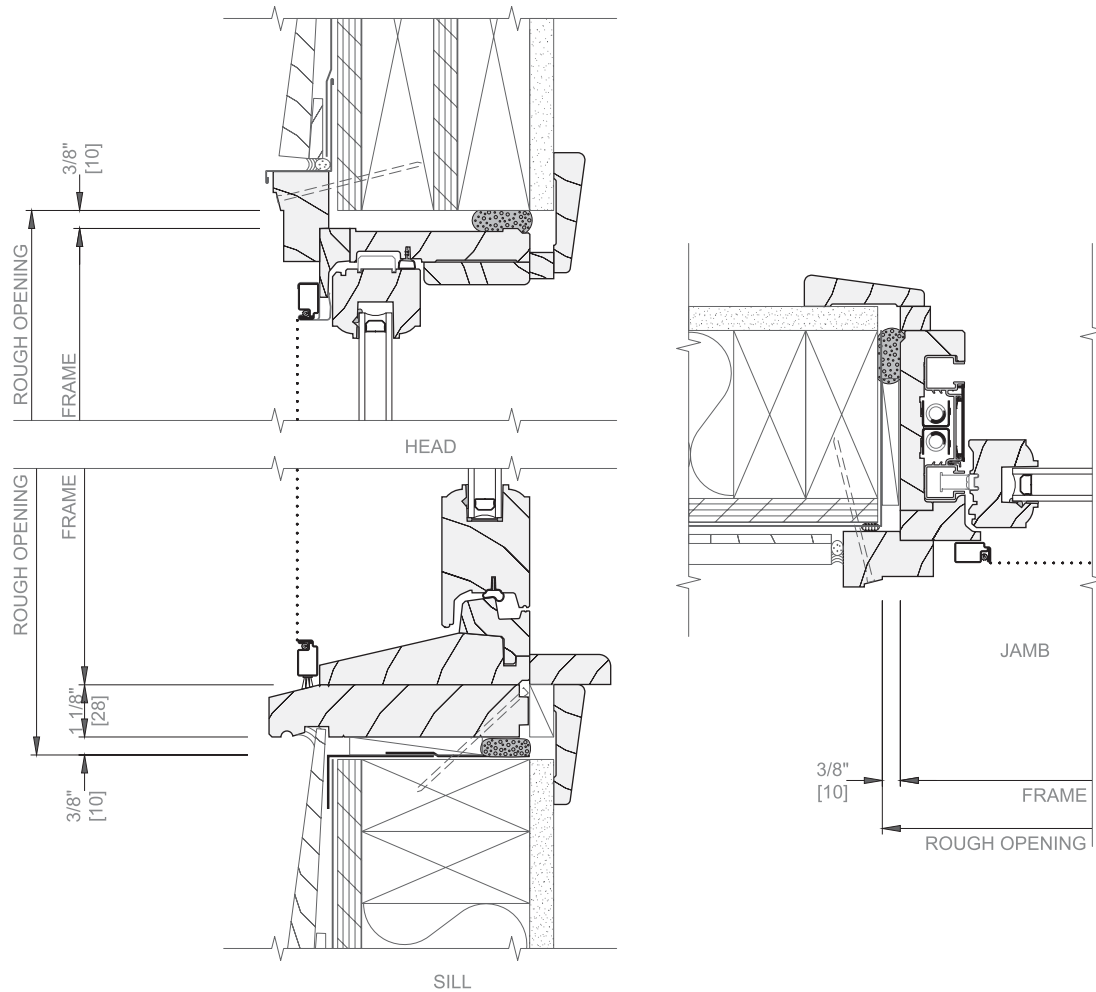
- When rigid insulation or other compressible sheathing is used, provide solid blocking for brickmould attachment.
- Shim unit in the opening plumb, level and square.
- Provide a primary and secondary air and water seal around the perimeter of the unit.
- **Primary Seal**—Seal at the brickmould edge to the exterior finish material.
- **Secondary Seal**—Provide a continuous bead of sealant behind the brickmould before setting the unit in place.
- **Interior Air Seal**—Apply around the perimeter of the unit by applying a 1" deep bead of Low expansion, low pressure polyurethane insulating window and door foam sealant - (DO NOT use high pressure or latex foams).
- Commercial and/or large complex combination assemblies may require additional installation design considerations and attachments. See the Combination Recommendations section.
- Seal head flashing to top of brickmould.
- See page F-4 for typical sealant placement details.

See your local Pella sales representative for installation instructions. Items in bold are available from Pella.



## Installation Details - Wood and Aluminum-Clad Wood Exterior

### Brickmould Installation Details -Wood Exterior Double-Hung with Wood Siding



#### FLASHING BY OTHERS

Metal head flashing.

#### SMARTFLASH® INSTALLATION TAPE

Integrate the window and door flashing tape into the wall system.

#### JAMB EXTENSION #250R (OPTIONAL)

#### PELLA 2-1/2" RANCH-1 TRIM (#30AY) (OPTIONAL)

#### PELLA WOOD BRICKMOULD #3443/3445

SHIM AND PLUMB UNITS AS REQUIRED BY OTHERS.

#### PELLA WINDOW AND DOOR INSTALLATION SEALANT AND WATER RESISTANT BACKER ROD.

Apply continuous sealant according to label directions and ASTM C1193.

#### LOW EXPANSION, LOW PRESSURE POLYURETHANE INSULATING WINDOW AND DOOR FOAM SEALANT - (DO NOT USE HIGH PRESSURE OR LATEX FOAMS)

Apply a continuous 1" bead of insulating foam to provide a full interior seal.

#### PELLA WOOD SUBSILL #3544

Scale 3" = 1' 0"

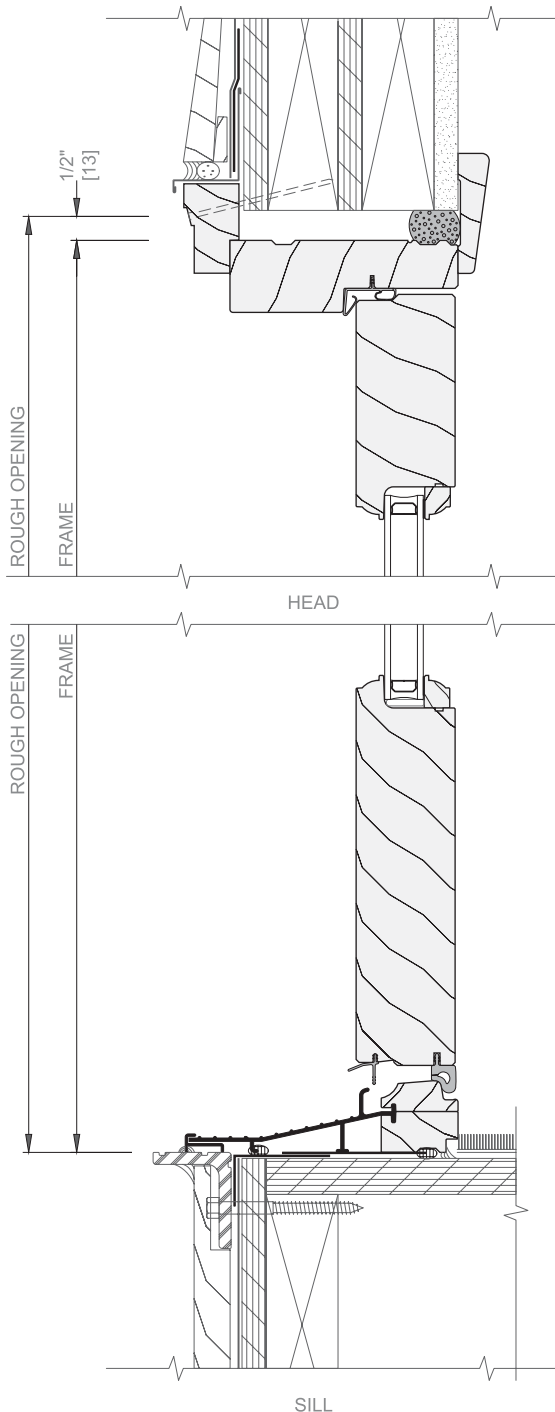
- Items in bold are available from Pella.
- These details are for typical single punch openings.
- Refer to the appropriate Pella® Installation Instruction for step-by-step instructions.





## Installation Details - Wood and Aluminum-Clad Wood Exterior

### Brickmould Installation Details -Wood Exterior Hinged Door with Wood Siding



**PELLA 2-1/2" RANCH-1 TRIM (#30AY) (OPTIONAL)**

**PELLA WOOD BRICKMOULD #3419 (OPTIONAL)**

SHIM AND PLUMB UNITS AS REQUIRED BY OTHERS.

PELLA WINDOW AND DOOR INSTALLATION SEALANT AND WATER RESISTANT BACKER ROD.

Apply continuous sealant according to label directions and ASTM C1193.

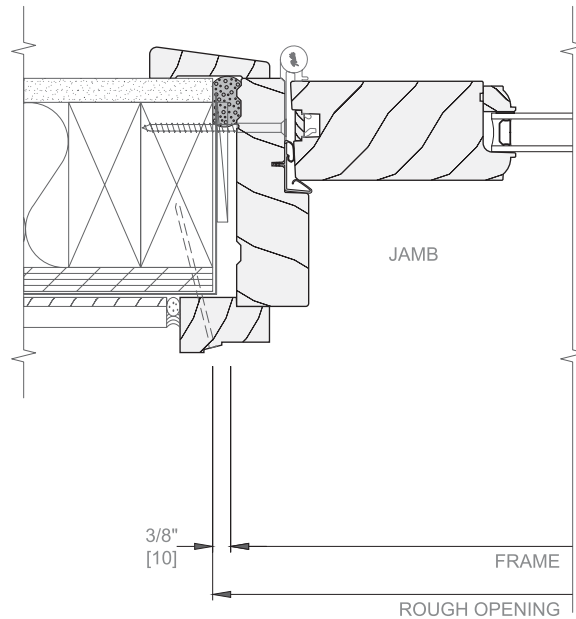
**LOW EXPANSION, LOW PRESSURE POLYURETHANE INSULATING WINDOW AND DOOR FOAM SEALANT - (DO NOT USE HIGH PRESSURE OR LATEX FOAMS)**

Apply a continuous 1" bead of insulating foam to provide a full interior seal.

**ALUMINUM SILL SUPPORT**

— or —

**2" X 4" WOOD BLOCKING BY OTHERS**



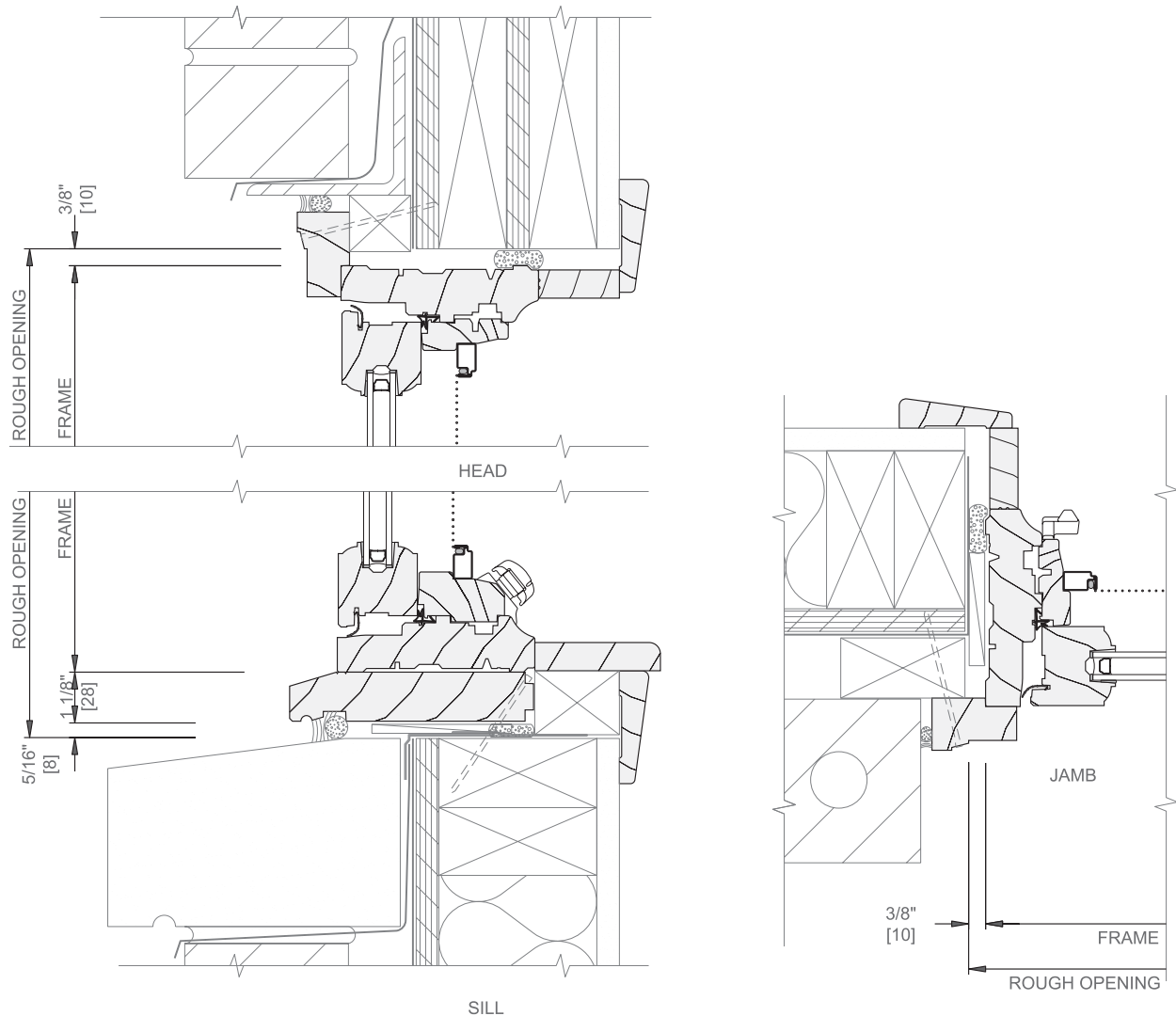
Scale 3" = 1' 0"

- Items in bold are available from Pella.
- These details are for typical single punch openings.
- Refer to the appropriate Pella® Installation Instruction for step-by-step instructions.



## Installation Details - Wood and Aluminum-Clad Wood Exterior

### Brickmould Installation Details - Wood Exterior Casement with Brick Veneer



THROUGH-WALL CAVITY FLASHING WITH WEEPS AT HEAD AND SILL BY OTHERS.

#### PELLA WOOD SUBSILL #3544

SHIM AND PLUMB UNITS AS REQUIRED BY OTHERS.

PELLA WINDOW AND DOOR INSTALLATION SEALANT AND WATER RESISTANT BACKER ROD.

Apply continuous sealant according to label directions and ASTM C1193.

**LOW EXPANSION, LOW PRESSURE POLYURETHANE INSULATING WINDOW AND DOOR FOAM SEALANT - (DO NOT USE HIGH PRESSURE OR LATEX FOAMS)**

Apply a continuous 1" bead of insulating foam to provide a full interior seal.

Scale 3" = 1' 0"

- Items in bold are available from Pella.
- These details are for typical single punch openings.
- Refer to the appropriate Pella® Installation Instruction for step-by-step instructions.

#### JAMB EXTENSION #250R (OPTIONAL)

#### PELLA 2-1/2" RANCH-1 TRIM (#30AY) (OPTIONAL)

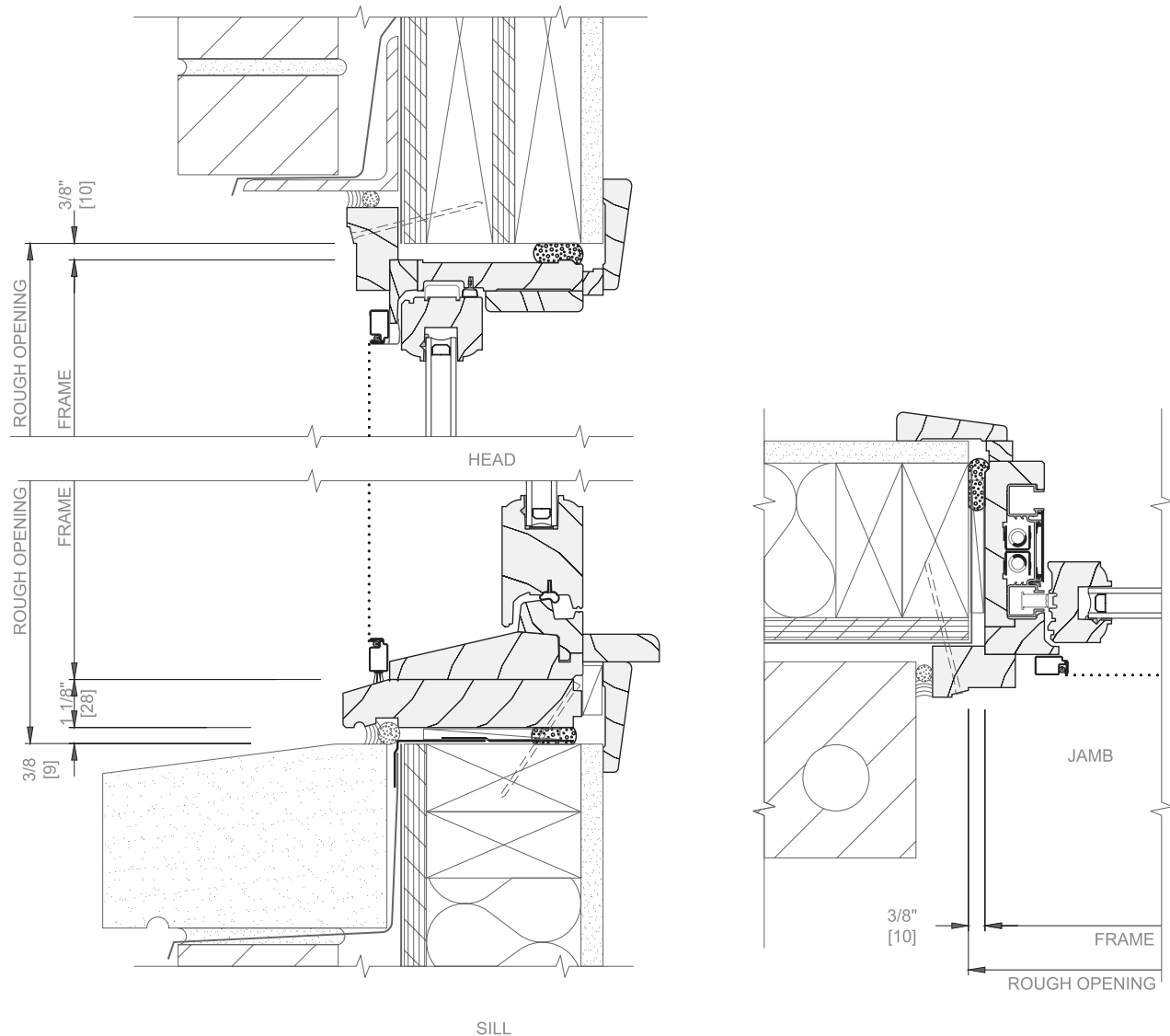
#### PELLA WOOD BRICKMOULD #3443/3445

Brick return at jamb to close cavity and provide backing for backer rod and sealant. See page F-25 for alternate detail.



## Installation Details - Wood and Aluminum-Clad Wood Exterior

### Brickmould Installation Details - Wood Exterior Double-Hung with Brick Veneer



PELLA 2-1/2" RANCH-1 TRIM (#30AY) (OPTIONAL)

PELLA WOOD BRICKMOULD #3443

SHIM AND PLUMB UNITS AS REQUIRED BY OTHERS.

PELLA WINDOW AND DOOR INSTALLATION SEALANT AND WATER RESISTANT BACKER ROD.

Apply continuous sealant according to label directions and ASTM C1193.

LOW EXPANSION, LOW PRESSURE POLYURETHANE INSULATING WINDOW AND DOOR FOAM SEALANT - (DO NOT USE HIGH PRESSURE OR LATEX FOAMS)

Apply a continuous 1" bead of insulating foam to provide a full interior seal.

JAMB EXTENSION #250R (OPTIONAL)

THROUGH-WALL CAVITY FLASHING WITH WEEPS AT HEAD AND SILL BY OTHERS.

PELLA WOOD SUBSILL #3544

Brick return at jamb to close cavity and provide backing for backer rod and sealant. See page W-ID-10 for alternate detail.

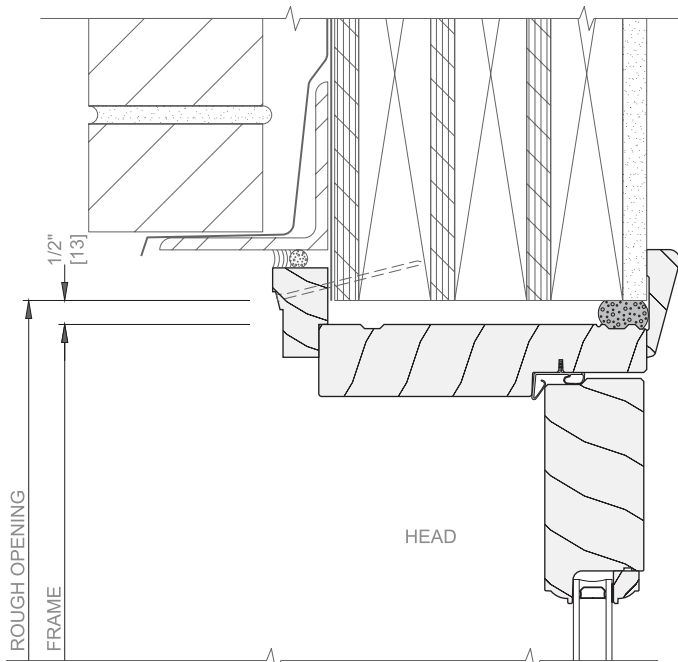
Scale 3" = 1' 0"

- Items in bold are available from Pella.
- These details are for typical single punch openings.
- Refer to the appropriate Pella® Installation Instruction for step-by-step instructions.



## Installation Details - Wood and Aluminum-Clad Wood Exterior

### Brickmould Installation Details - Wood Exterior Hinged Door with Brick Veneer



**PELLA 2-1/2" RANCH-1 TRIM (#30AY) (OPTIONAL)**

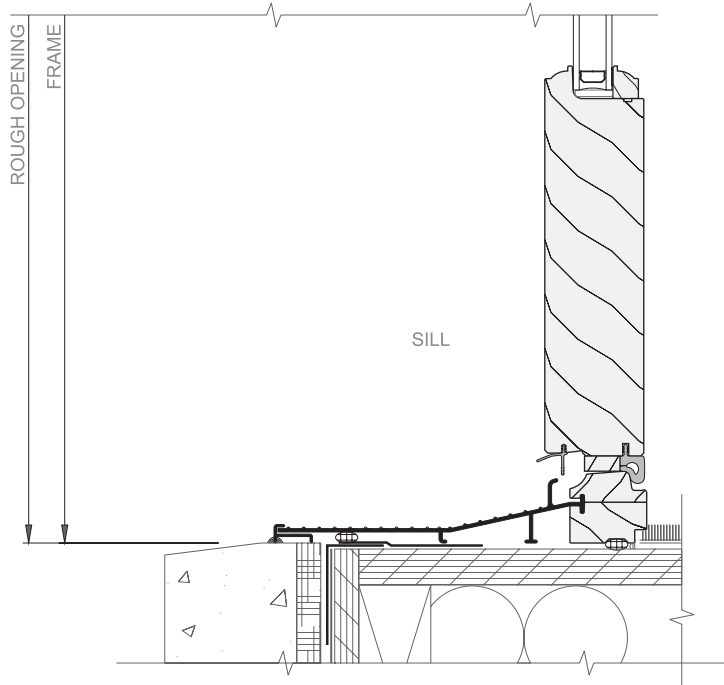
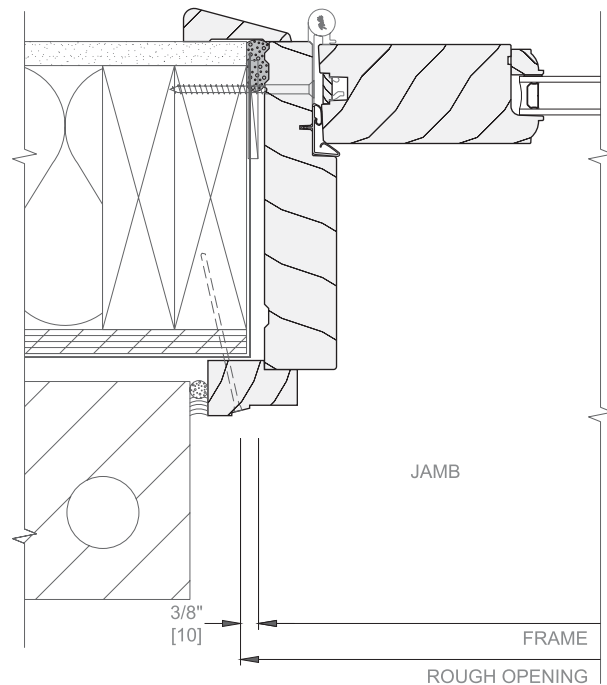
**PELLA WOOD BRICKMOULD #3419 (OPTIONAL)**

**SHIM AND PLUMB** UNITS AS REQUIRED BY OTHERS.

**PELLA WINDOW AND DOOR INSTALLATION SEALANT AND WATER RESISTANT BACKER ROD.**

Apply continuous sealant according to label directions and ASTM C1193.

**LOW EXPANSION, LOW PRESSURE POLYURETHANE INSULATING WINDOW AND DOOR FOAM SEALANT - (DO NOT USE HIGH PRESSURE OR LATEX FOAMS)**



Apply a continuous 1" bead of insulating foam to provide a full interior seal.

**THROUGH-WALL CAVITY FLASHING WITH WEEPS AT HEAD AND SILL BY OTHERS.**

Brick return at jamb to close cavity and provide backing for backer rod and sealant. See page W-ID-10 for alternate detail.

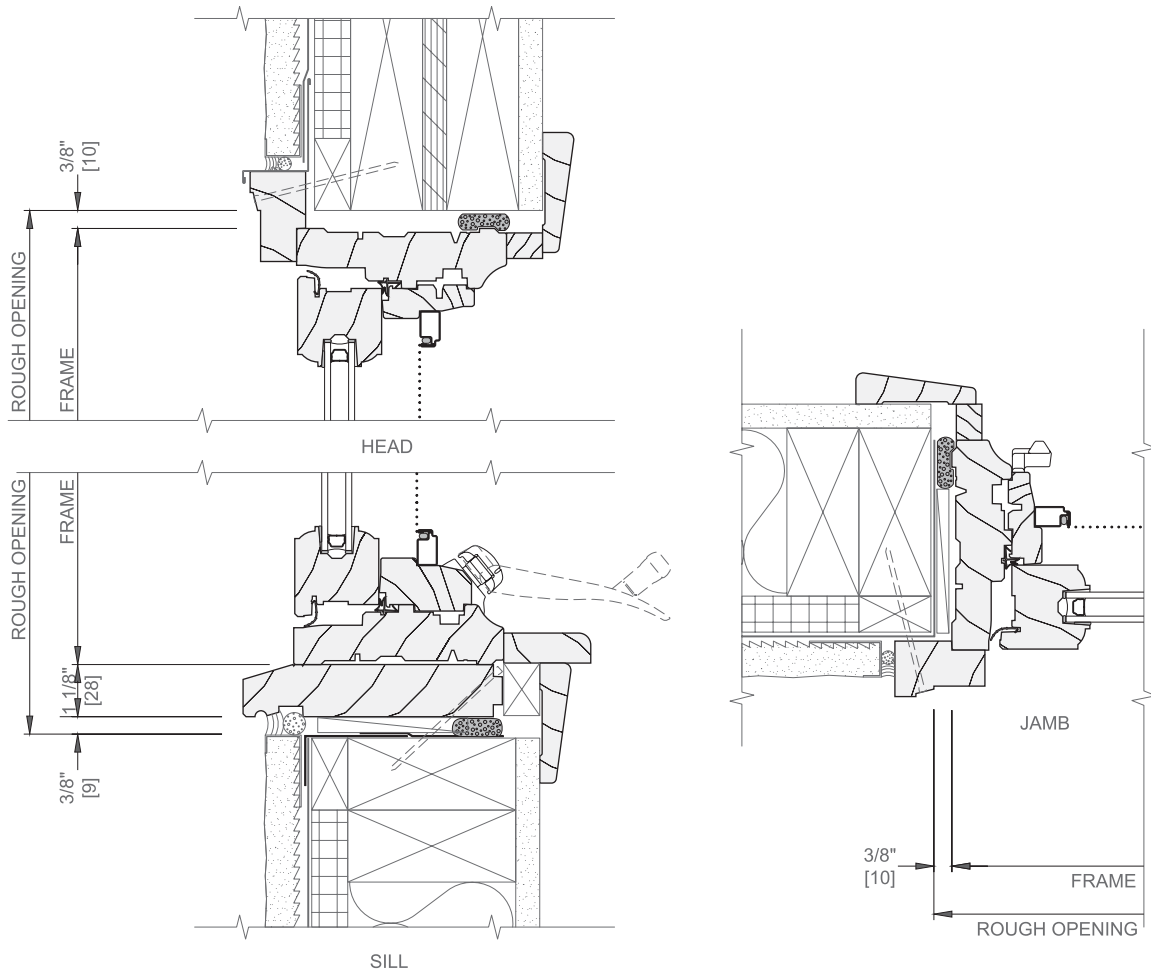
Scale 3" = 1' 0"

- Items in bold are available from Pella.
- These details are for typical single punch openings.
- Refer to the appropriate Pella® Installation Instruction for step-by-step instructions.



## Installation Details - Wood and Aluminum-Clad Wood Exterior

### Brickmould Installation Details - Wood Exterior Casement with Stucco



#### FLASHING BY OTHERS

Metal head flashing.

#### PELLA 2-1/2" RANCH-1 TRIM (#30AY) (OPTIONAL)

#### PELLA WOOD SUBSILL #3544

SHIM AND PLUMB UNITS AS REQUIRED BY OTHERS.

#### PELLA WINDOW AND DOOR INSTALLATION SEALANT AND WATER RESISTANT BACKER ROD.

Apply continuous sealant according to label directions and ASTM C1193.

#### LOW EXPANSION, LOW PRESSURE POLYURETHANE INSULATING WINDOW AND DOOR FOAM SEALANT - (DO NOT USE HIGH PRESSURE OR LATEX FOAMS)

Apply a continuous 1" bead of insulating foam to provide a full interior seal.

#### JAMB EXTENSION #383G (OPTIONAL)

STUCCO J-MOLD BY OTHERS

NOTE: THESE DETAILS REFLECT GENERAL INSTALLATION CONCEPTS FOR TYPICAL CONSTRUCTION WITH WATER-MANAGED STUCCO PRODUCTS. DUE TO THE NUMBER OF DIFFERENT SYSTEMS AVAILABLE, NO ATTEMPT HAS BEEN MADE TO SHOW SPECIFIC FLASHING OR DRAINAGE DETAILS. CONSULT THE STUCCO MANUFACTURER FOR SPECIFIC DETAILING REQUIRED FOR THEIR WATER-MANAGED SYSTEM.

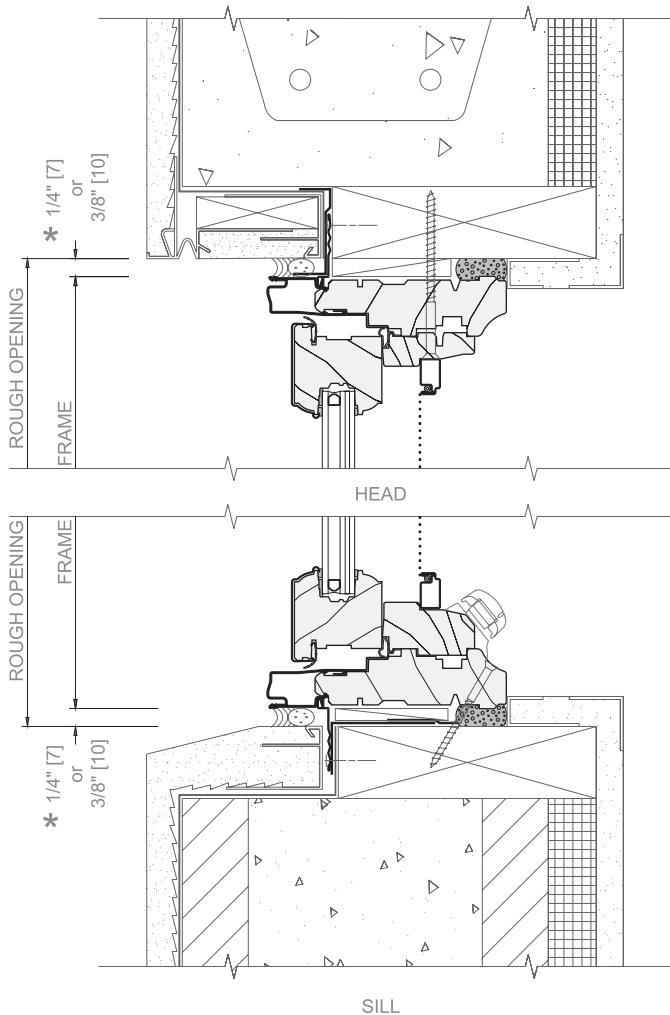
Scale 3" = 1' 0"

- Items in bold are available from Pella.
- These details are for typical single punch openings.
- Refer to the appropriate Pella® Installation Instruction for step-by-step instructions.



## Installation Details - Wood and Aluminum-Clad Wood Exterior

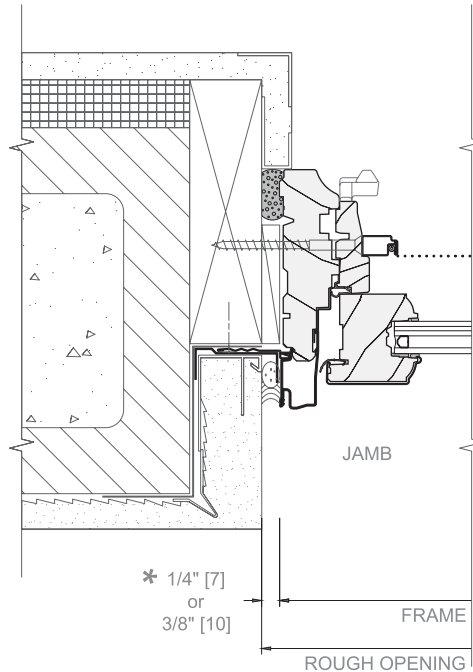
### Impact-Resistant Glazing - Casement with Concrete Block and Stucco



#### SMARTFLASH® INSTALLATION TAPE

Integrate the window and door flashing tape into the wall system.

SEE INSTALLATION INSTRUCTIONS FOR ANCHORAGE SCREW SIZE, LOCATION AND SPACING.



#### INSTALLATION FIN #42G7

Attach unit to wall construction with nails or screws at each pre-punched hole in the installation fin.

PELLA WINDOW AND DOOR INSTALLATION SEALANT AND WATER RESISTANT BACKER ROD.

Apply continuous sealant according to label directions and ASTM C1193.

SHIM, LEVEL AND PLUMB UNITS AS REQUIRED AT ANCHORAGE LOCATIONS.

**LOW EXPANSION, LOW PRESSURE POLYURETHANE INSULATING WINDOW AND DOOR FOAM SEALANT - (DO NOT USE HIGH PRESSURE OR LATEX FOAMS)**

Apply a continuous 1" bead of insulating foam to provide a full interior seal.

- \* Maximum clearance allowed per local code.

Scale 3" = 1' 0"

- Items in bold are available from Pella.
- These details are for typical single punch openings.
- Refer to the appropriate Pella® Installation Instruction for step-by-step instructions.