



Installation Accessories and Applications

Introduction..... W-IA-2

Window Attachment Options ..... W-IA-3

Subsill ..... W-IA-6

Exterior Mullions ..... W-IA-8

Mullion Cover Application ..... W-IA-10

Mullion Reinforcements ..... W-IA-12

Reinforcing Mullion Application ..... W-IA-13

Expansion Mullion Cover Application ..... W-IA-14

Mullion Considerations ..... W-IA-16

Commercial Structural Receptor Mullions ..... W-IA-17

Exterior Trim Applications ..... W-IA-22

Frame Expansion Application ..... W-IA-25

EnduraClad® Exterior Trim ..... W-IA-29

EnduraClad® Exterior Trim Applications ..... W-IA-31

Commercial Replacement Accessories..... W-IA-34

Break Metal ..... W-IA-37

Wood Exterior Mullion Covers..... W-IA-39

Window and Door Subsills and Exterior Trim..... W-IA-40

Interior Casings ..... W-IA-41

Interior Stools and Trim ..... W-IA-42

Interior Jamb Extensions..... W-IA-43

Interior Mullion Covers ..... W-IA-43

Pocket Replacement

Exterior Pocket Installation ..... W-IA-44

Interior Pocket Installation ..... W-IA-45

The information published in this document is believed to be accurate at the time of publication. However, because we are constantly working to improve our products, content is subject to change without notice. Some content may not reflect the most current product offering, but installation concepts still apply. Consult your local Pella representative for up-to-date product information.

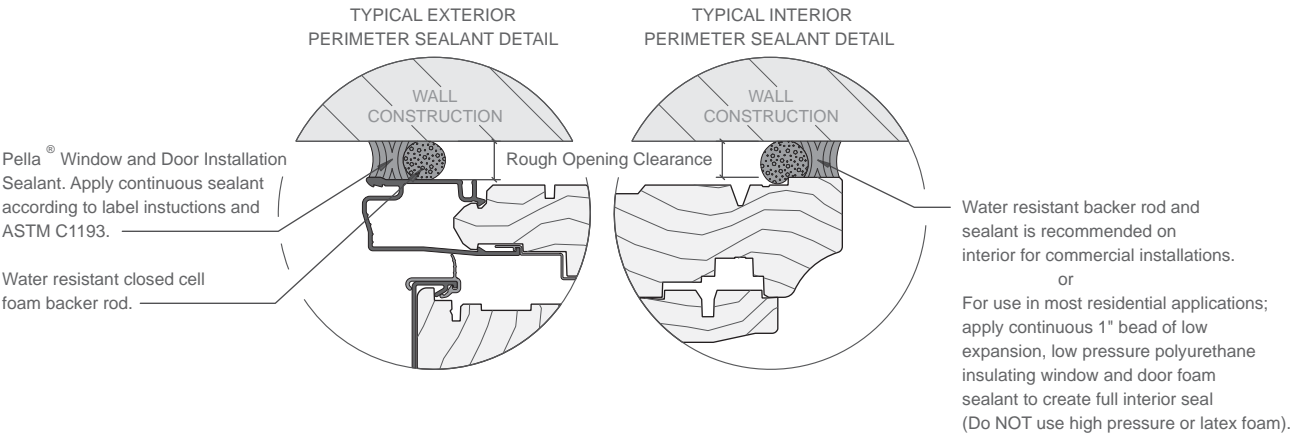


Introduction

This section presents available installation accessories which, when used in conjunction with proper Pella installation procedures, will provide for a robust installation for single or combination units. Window and door attachment accessories used for both clad and primed wood exterior units are illustrated in this section.

Aside from attachment accessories, this section reviews accessories to meet the following requirements:

- Combination applications, such as mullion covers, expansion mullion covers, reinforcement mullions and bay and bow accessories.
- Interior casings and stools
- Subsills
- Traditional and flat trim



Single and combination window openings rough opening clearance recommendations

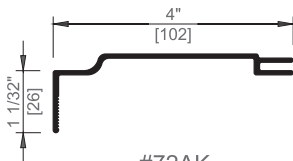
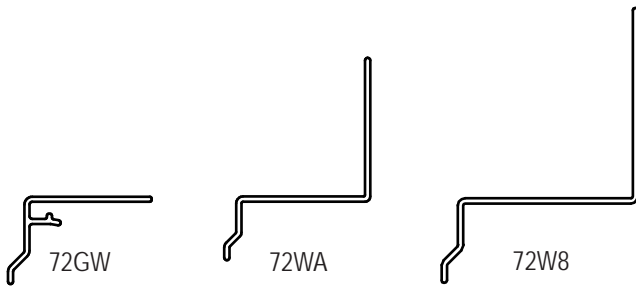
	Single Opening	Combinations
Aluminum-Clad Wood	3/8" (3/4" total)	1/2" to 5/8" (1" to 1-1/4" total)
Pella® Impervia® Fiberglass	1/4" (1/2" total)	1/2" (1" total)
Pella® 250 Series Vinyl	1/4" (1/2" total)	3/8" (3/4" total)
Encompass by Pella® Vinyl	1/4" (1/2" total)	3/8" (3/4" total)

Door rough openings should be sized as shown above for width and 1/2" greater than frame in height. Door sill clearance is 0". Increase rough opening clearances to accommodate flashing material build-up to maintain the dimensions shown above. Additional clearance may be necessary for combination assemblies or installation accessories, consult with your Pella sales representative or Pella Architectural Solutions for details.

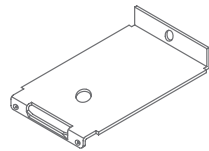


## Installation Accessories

### Attachment Options



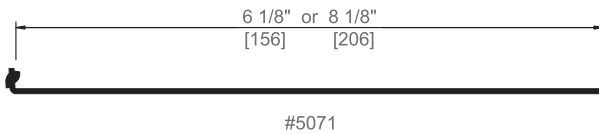
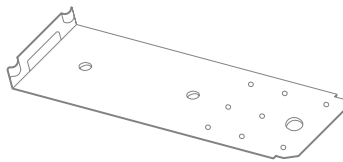
#72AK



#5027

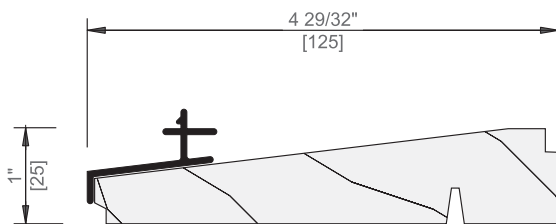


#0DA9



#5071

CLAD WOOD SUBSILL #4049  
AND CLIP #7366



Scale 6" = 1' 0"

### Installation Accessories

Accessory	Indiv. Part No.	Box No.
Installation Fin	42G7	0BLA
Head Drip Cap	72GW	0BLB
Elliptical Head Drip Fin	72Y7	—
Quarter Circle Head Drip Fin	72Y6	—
Head Drip Flashing	72WA	0BMS
Head Flashing	72W8	—
Receptor	72AK	06Y1
Receptor Gasket	—	0DA9
6" Installation Clip	5071	0635
8" Installation Clip	5071	0B51
T-Subframe Clip	5027	0DB0
3"-wide Smart Flash® Installation Tape (150' rolls)	850H0000	OCFV
6"-wide Smart Flash® Installation Tape (50' rolls)	850H0004	01FM

### Wood Sill Plates for Clad Windows

Accessory	Indiv. Part No.	Box No.
CM/AW Sill Plate	2722	0C79
Lifestyle Series Sill Plate	2772	—

### Subsills

Accessory	Indiv. Part No.	Box No.
Clad/Wood Subsill	4049	0B13
Subsill Clip	7366	0B14
Replacement Sill Adaptor	70DK	—



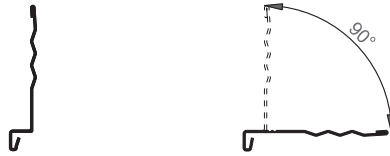
## Installation Accessories

### Installation Fin

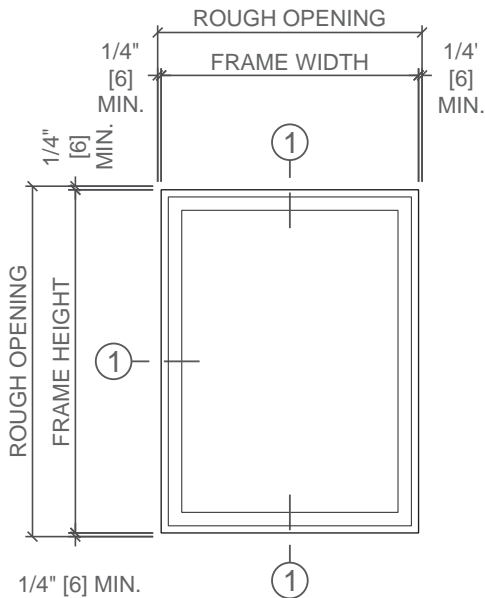
Scale 6" = 1' 0"

Scale 3" = 1' 0"

#### INSTALLATION FIN #42G7



\*NOTE: INSTALLATION FIN COMES INSTALLED ON THE WINDOW AND LAYS FLAT READY TO FIELD BEND UP INTO POSITION FOR WINDOW INSTALLATION



1/4" [6] MIN.

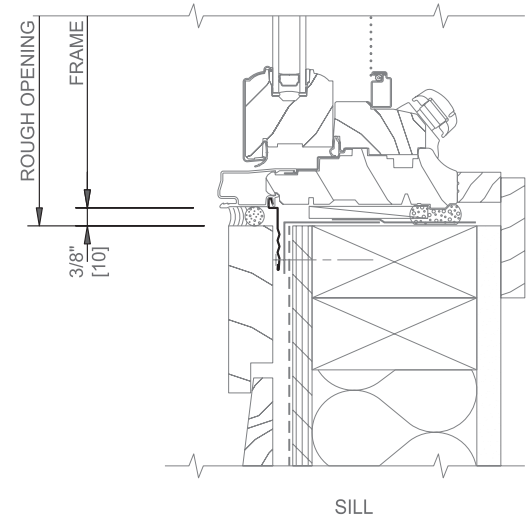
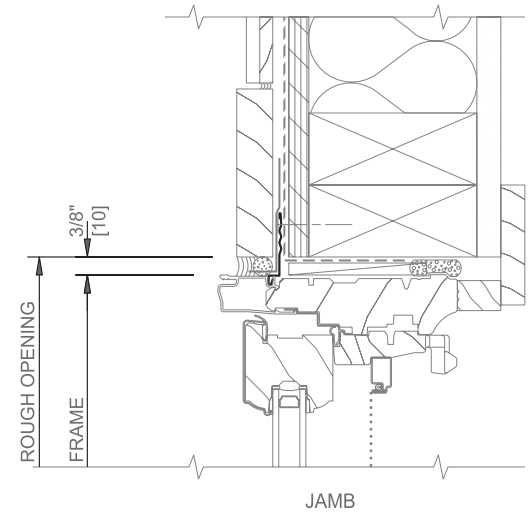
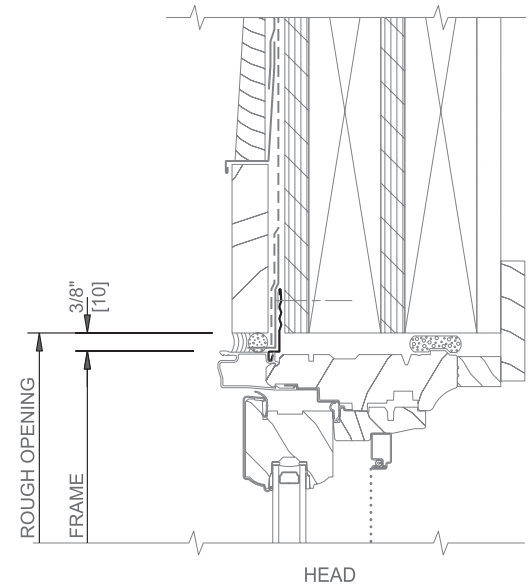
Not to scale.

SHIM AND LEVEL UNITS AS REQUIRED

CONTINUOUS WOOD BLOCKING, WOOD TRIM, BACKER ROD AND SEALANT BY OTHERS

To determine window openings for typical installations, add 3/4" to frame width and 3/4" to frame height.

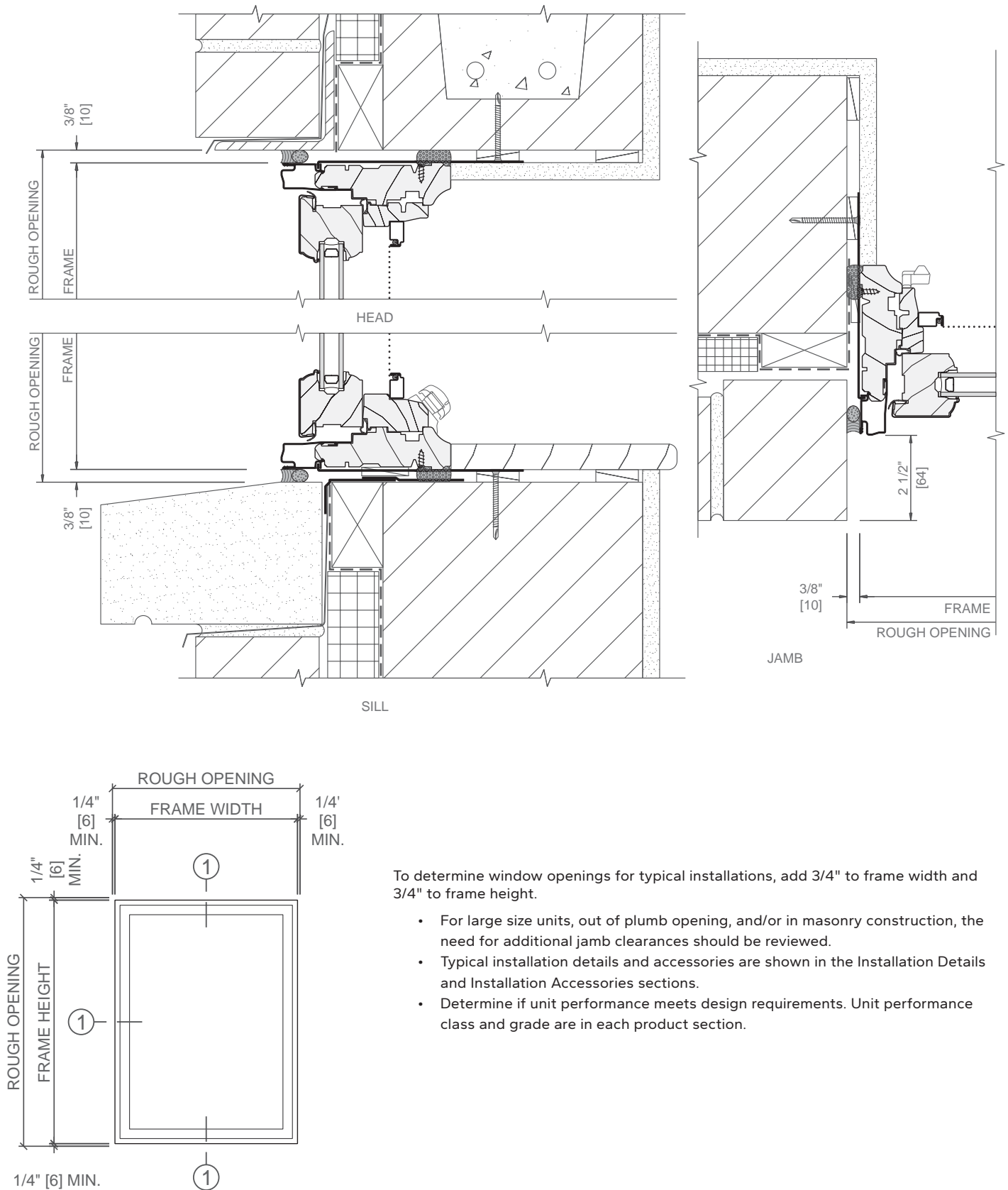
- For large size units, out of plumb opening, and/or in masonry construction, the need for additional jamb clearances should be reviewed.
- Typical installation details and accessories are shown in the Installation Details and Installation Accessories sections.
- Determine if unit performance meets design requirements. Unit performance class and grade are in each product section.





## Installation Accessories

### Clip Installation





## Installation Accessories

### Clad Wood Subsill

Subsills are recommended for installations where recaulking would be difficult or high weather exposure exists due to the height or location of the building. The need for the subsill weep system is increased where there are multiple units in a given opening.

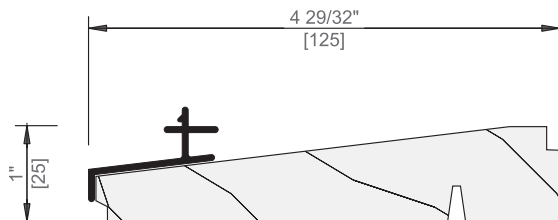
Fasten Sill of Unit to Subsill as Required.

Continuous Bead of Sealant

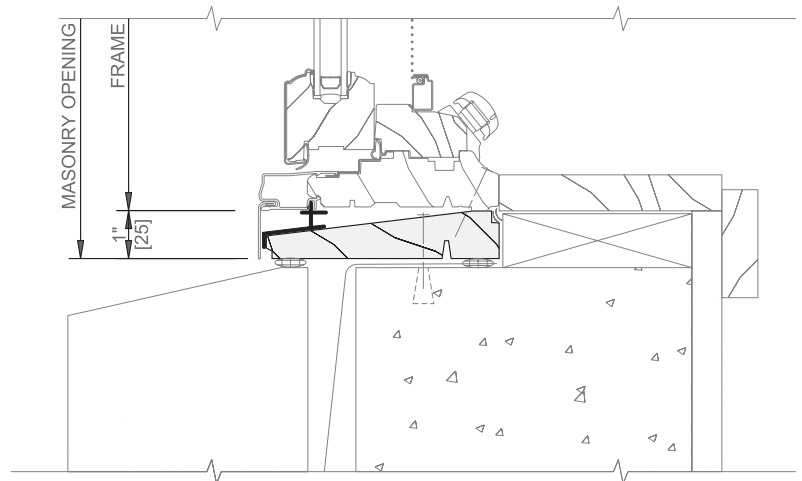
FASTEN WOOD SUBSILL TO OPENING @ 16" [406] O.C. SEAL ENDS

FRAME EXPANDER #47D5 DO NOT SEAL TO OPENING

CLAD WOOD SUBSILL #4049  
AND CLIP #7366



Scale 6" = 1' 0"



NOTE: SET CLAD WOOD SUBSILL IN SEALANT AND SEAL ENDS AND EXTERIOR BOTTOM EDGE TO OPENING. WINDOW OPENING SILL MUST BE LEVEL PRIOR TO SETTING SUBSILL.

Note: The clad wood subsill is an open weep system. An interior air seal is critical to the performance of this system. Also, DO NOT SEAL the exterior frame expander to the opening.

Fasten Sill of Unit to Subsill as Required.

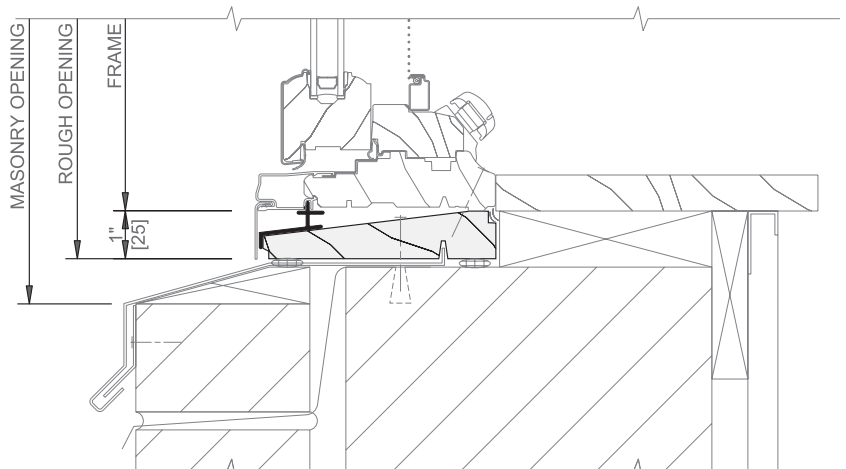
FASTEN WOOD SUBSILL TO OPENING @ 16" [406] O.C. SEAL ENDS

Continuous Bead of Sealant.

FRAME EXPANDER #47D5 DO NOT SEAL TO OPENING

Used with Pella clad windows.

**Detail at right:** Custom 0.05" (1.27) aluminum sill flashing used with clad wood subsill.



NOTE: SET CLAD WOOD SUBSILL IN SEALANT AND SEAL ENDS AND EXTERIOR BOTTOM EDGE TO OPENING. WINDOW OPENING SILL MUST BE LEVEL PRIOR TO SETTING SUBSILL.

- A continuous perimeter line of sealant is required on the interior with clad/ wood subsill #4049.
- Where the aluminum comes into contact with the cement materials, apply protective coating to separate galvanically incompatible materials.
- The clad/ wood subsill is a primed, preservative treated wood for use with Pella aluminum clad/ wood windows.
- The aluminum frame expander covers the front edge of the subsill.

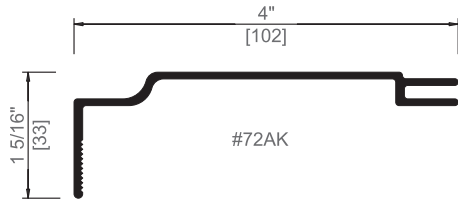
Scale 3" = 1' 0"



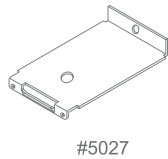
## Installation Accessories

### L Receptor Application

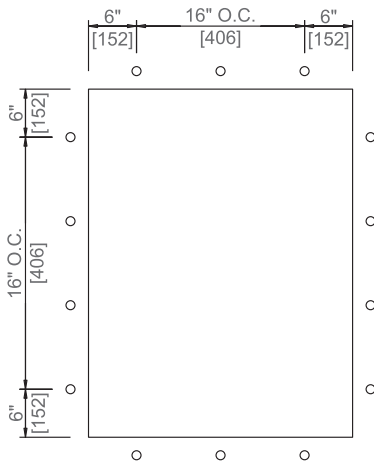
Scale 6" = 1' 0"



Used at head and jambs where interior installation is required. A subsill is recommended at sill. Unit attaches to receptor with clip #5027.

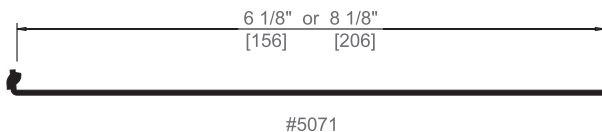
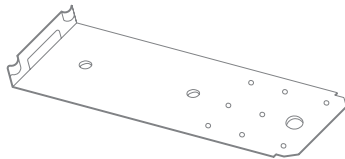


Perimeter clip spacing to be 6" (152) from the edge of each unit and 6" [152] from both sides of a joining mullion.  
Typical spacing: 16" [406] O.C.  
Each clip will hold 100lb. if attached with anchors that will hold 100lb.



#### INSTALLATION CLIP #5071

Installation clips #5071 are to be spaced @ 18" (457) O.C. (minimum of two per side) at head, jambs and sill.  
See schematic drawing.



Scale 3" = 1' 0"

Sealant. by Others

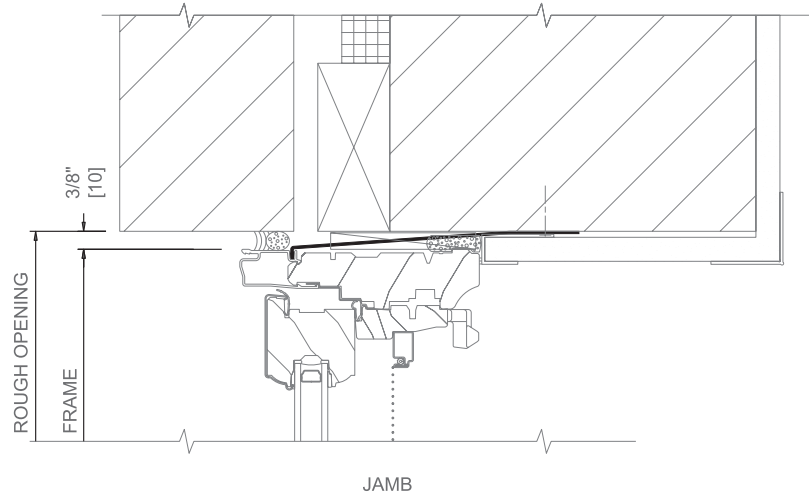
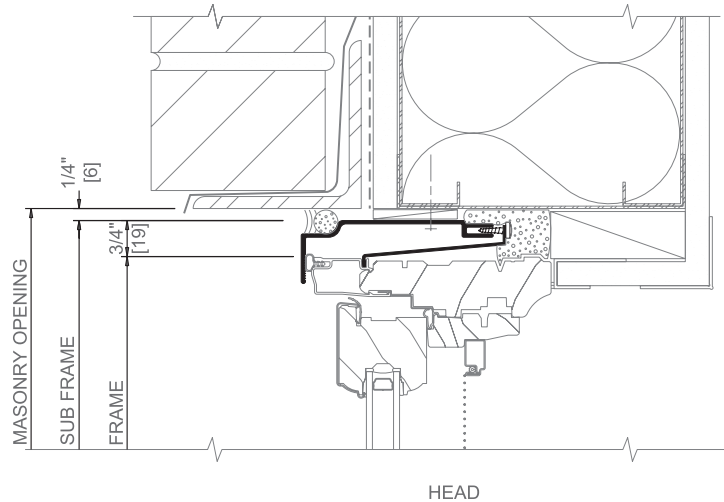
RECEPTOR #72AK  
VINYL BULB GASKET #0DA9  
OR SEALANT TAPE

INSTALLATION CLIPS #5027  
@ 16" (406) O.C.

Studs by Others

Shim and Plumb Units as Required

1" Continuous Bead of  
DOW® GREAT STUFF™ PRO  
Window and Door Sealant.



Water Resistant Backer Rod and  
Sealant. by Others

INSTALLATION CLIP #5071  
@ 16" (406) O.C.

Continuous Wood Blocking, Wood  
Trim. by Others

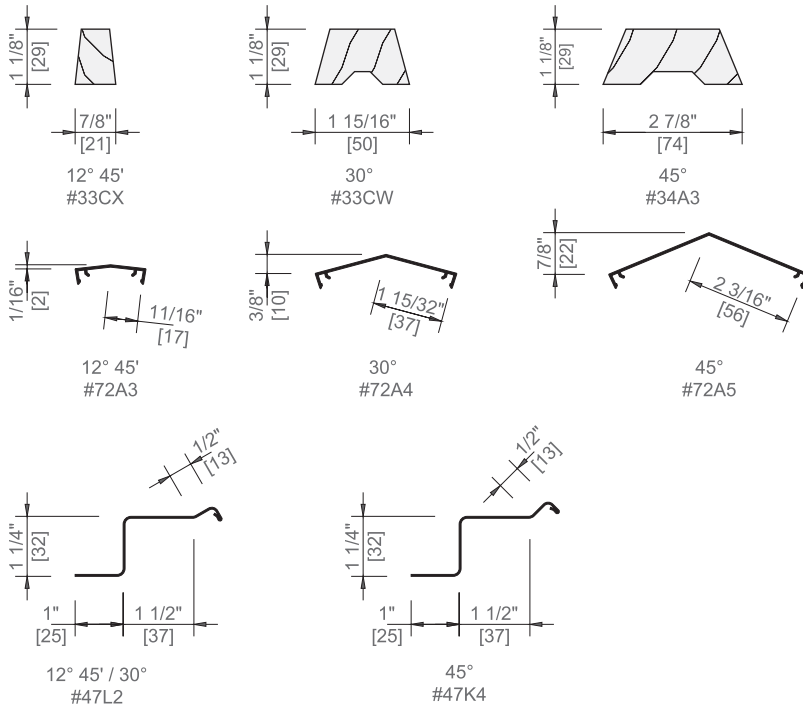
1" Continuous Bead of  
DOW® GREAT STUFF™ PRO  
Window and Door Sealant.

Shim and Plumb Units as Required



## Installation Accessories

### Bay/Bow Mullion Accessories



#### Bay and Bow Mullion Accessories

Bay Wedges	Indiv. Part No.	Box No.
12° 45'	33CX	OB19
30°	33CW	OB20
45°	34A3	OB21

Mullion Covers	Indiv. Part No.	Box No.
12° 45'	72A3	OB43
30°	72A4	OB37
45°	72A5	OC72

Jamb Covers	Indiv. Part No.
12° 45'/30°	47L2
45°	47K4

See the Architectural Design Manual Bay/Bow section for cross sections of application.





## Installation Accessories

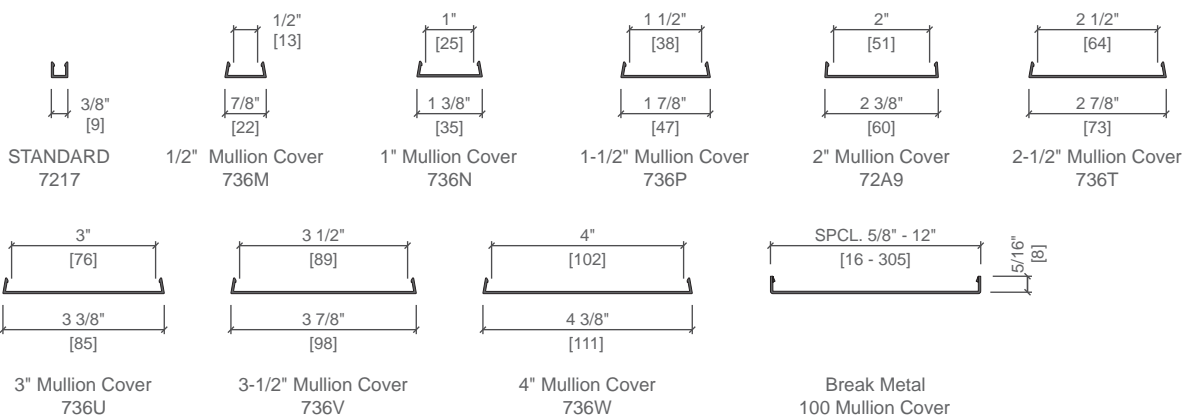
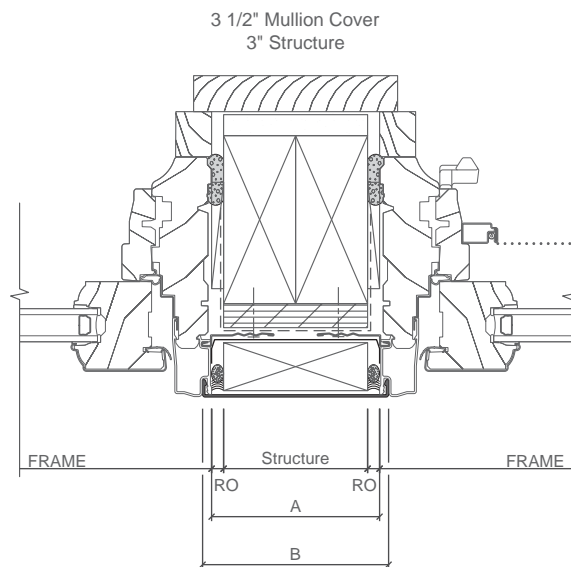
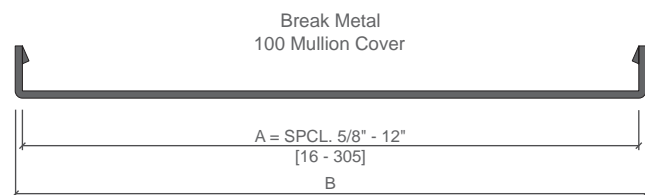
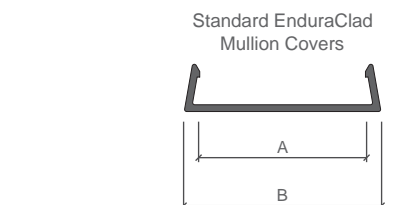
### Exterior Mullion Covers

Mullion Covers				
Mullion Cover	A (Frame to Frame)	B (Overall Part Dimension)	Part Number	Thickness (In.)
Standard (Direct)	0"	3/8	7217	0.047
1/2"	1/2"	7/8	736M	0.047
1"	1"	1-3/8	736N	0.047
1-1/2"	1-1/2"	1-7/8	736P	0.047
2"	2"	2-3/8	72A9	0.047
2-1/2"	2-1/2"	2-7/8	736T	0.047
3"	3"	3-3/8	736U	0.060
3-1/2"	3-1/2"	3-7/8	736V	0.060
4"	4"	4-3/8	736W	0.060
Custom (Break Metal)	Min 5/8" Max 12"	B = A + 3/8"	100 Mullion Cover	0.050

For all but direct mullion, dimension A is to inside of bends. Frame to Frame plus 1/4" equals dimension to inside of bends.

$$A = B - 3/8"$$

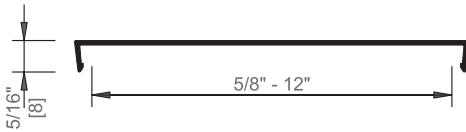
Standard mull covers are extruded aluminum.





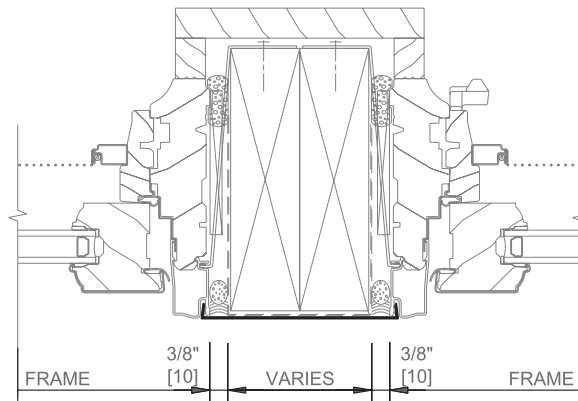
Scale 6" = 1' 0"

### CUSTOM BREAK METAL MULLION COVER



100 Mullion cover is fabricated from 0.050" Aluminum for widths of 5/8" to 12" (16 - 305). (Dimension A is to inside of bends. Frame to Frame plus 1/4" equals dimension to inside of bends.)

Scale 3" = 1' 0"



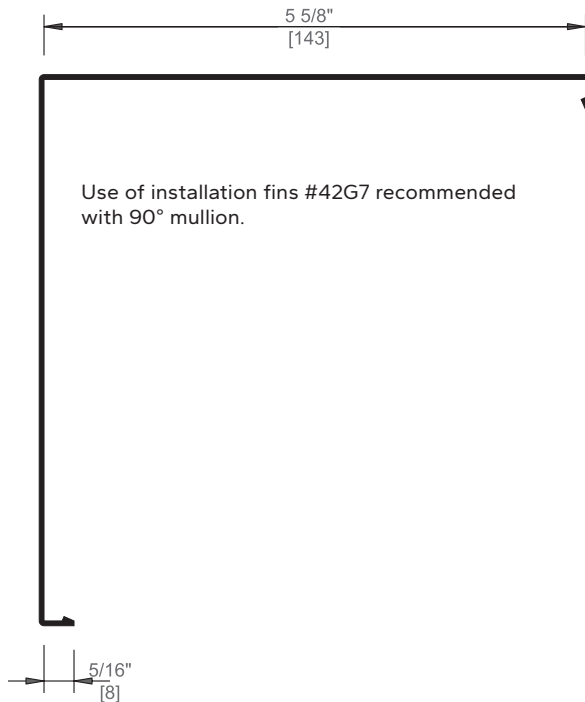
**NOTE:** APPLY CONTINUOUS BEAD OF SEALANT TO INSIDE CORNERS OF MULLION COVER BEFORE INSTALLING UNITS.

SHIM AND LEVEL UNITS AS REQUIRED

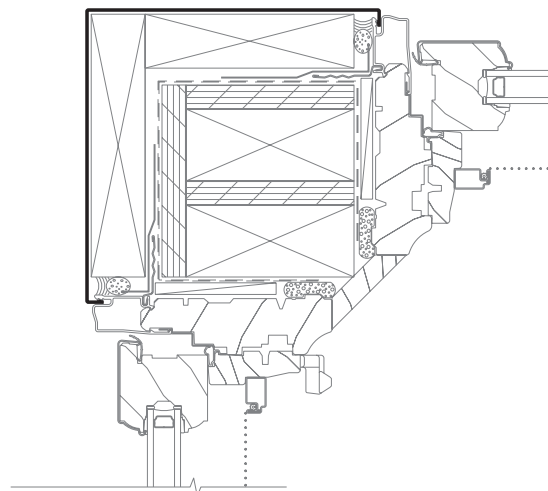
CONTINUOUS WOOD BLOCKING, WOOD TRIM, BACKER ROD AND SEALANT BY OTHERS

INSTALLATION CLIPS #5071 @ 18" (457) O. C. (REFER TO PAGE (17) FOR ADDITIONAL SPACING INFORMATION

### 90° MULLION COVER #4994



Use of installation fins #42G7 recommended with 90° mullion.



CONTINUOUS INSTALLATION FINNS #42G7

SHIM AND LEVEL UNITS AS REQUIRED

CONTINUOUS WOOD BLOCKING, WOOD TRIM, BACKER ROD AND SEALANT BY OTHERS

Mullion covers are not intended to create a completely waterproof seal. See typical sealant details.



## Installation Accessories

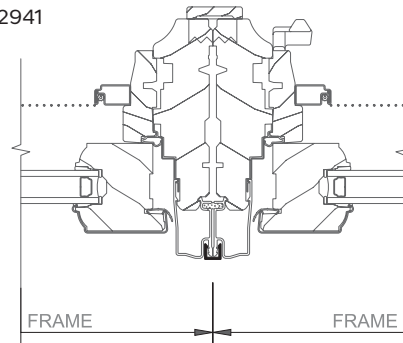
### Mullion Applications

STANDARD MULLION COVER  
#7217



USED TO JOIN TWO CLAD  
UNITS WHERE NO MULLION  
REINFORCEMENT IS REQUIRED

INTERIOR WOOD  
MULLION COVER #2941



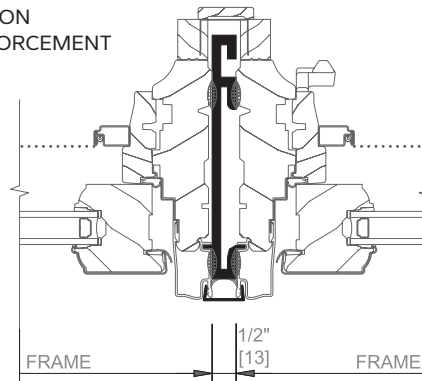
CORRUGATED  
FASTENERS  
@ 12" (305) O. C. BY  
OTHERS

1/2" MULLION COVER  
#736M



TYPICALLY USED WITH 1/2" (10)  
MULLION REINFORCEMENT #0A6G

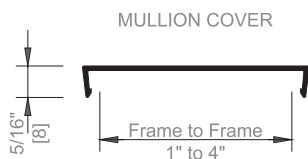
MULLION  
REINFORCEMENT  
#2941



1" x 1/2" CROWN  
STAPLE B.O.

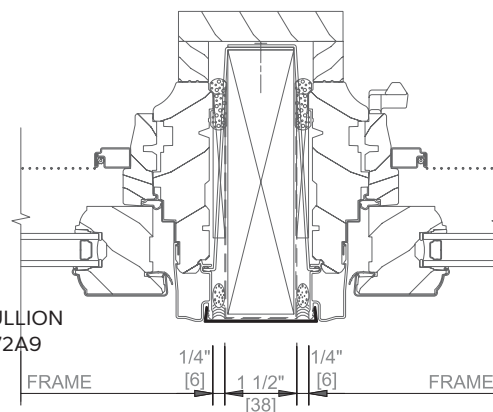
CONTINUOUS  
SEALANT BY  
OTHERS

**NOTE:** Apply continuous bead of sealant to inside corners of mullion cover before installing to units.



STANDARD SIZE MULLION COVERS  
AVAILABLE IN 1/2" INCREMENTS  
FROM 1" to 4" AS NEEDED.

2" (51) MULLION  
COVER #72A9



SHIM AND  
LEVEL UNITS AS  
REQUIRED

CONTINUOUS  
WOOD  
BLOCKING,  
WOOD TRIM,  
BACKER ROD  
AND SEALANT BY  
OTHERS

INSTALLATION  
CLIPS #5071 @ 18"  
(457) O.C. (REFER  
TO PAGE 17 FOR  
ADDITIONAL  
SPACING  
INFORMATION)

**NOTE:** Apply continuous bead of sealant to inside corners of mullion cover before installing to units.

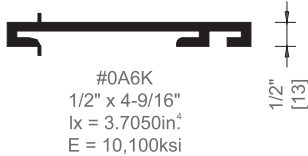
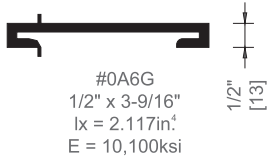
Mullion covers are not intended to create a completely waterproof seal.  
See typical sealant details.



## Installation Accessories

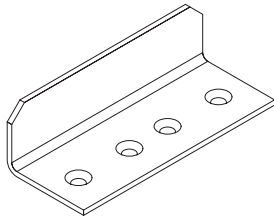
### Mullion Reinforcements

Scale 3" = 1' 0"

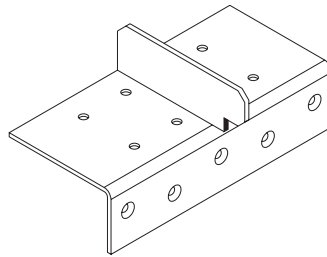


#### Mullion Reinforcements

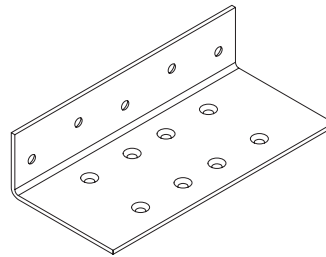
Accessory	Indiv. Part No.	Box No.
Mullion Reinforcement 1/2" x 3-9/16"	0A6G	0EUA
Mullion Reinforcement 1/2" x 4-9/16"	0A6K	0EUL
Clip Mullion Anchor	512C	00NN0003
High Performance Mullion Anchor	000F	0CSL0025
Wood Mullion Anchor	512A	00NN0001
Mullion End Splice - 96"	72WQ	0CUH
Subsill Mullion Anchor	512B	00NN0002
Fin Mullion Anchor	512D	00NN0004
20" Plate	500P	0DKM0000



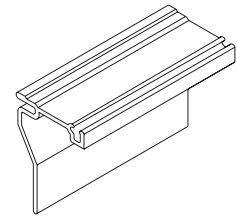
#512C  
Clip Mullion Anchor



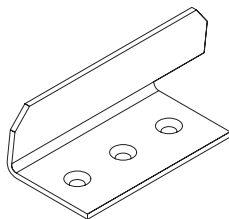
#000F  
High Performance  
Anchor



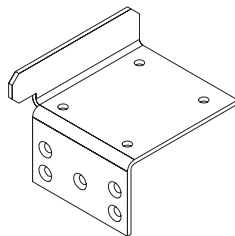
#512A  
Wood Mullion Anchor



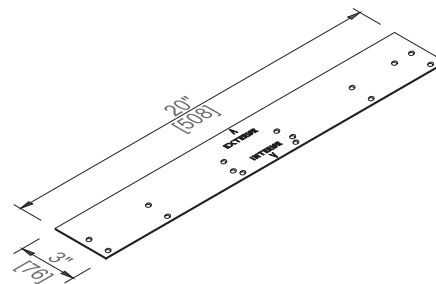
#72WQ  
Mullion End Splice



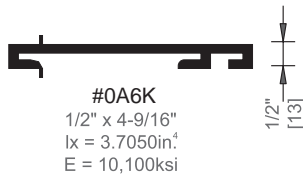
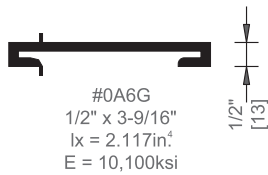
#512B  
Subsill Mullion  
Anchor



#512D  
Fin Mullion Anchor



#500P  
20" Plate

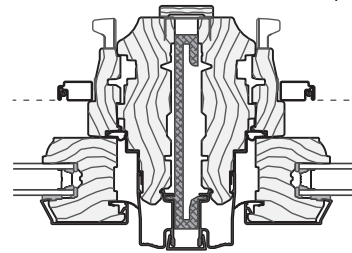


1. Attach 1/2" mullion reinforcements with clips #512C, 000F, 512B or 512D.
2. Can be used either horizontally or vertically for wind load mullion reinforcement. Note: Recommended use is vertically with subsill for large combination assemblies.
3. Do not use as part of building structure.
4. Refer to Combinations Section for wind load information, (max. Length 144").

**NOTE:** Apply continuous bead of sealant to inside corners of mullion cover before installing to units.

WOOD TRIM  
BY OTHERS

1" x 1/2" Crown  
Staple B.O.

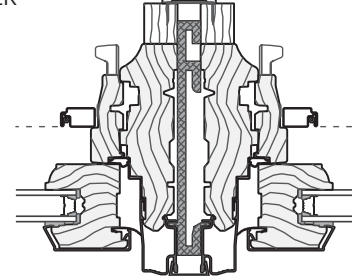


CONTINUOUS  
SEALANT BY  
OTHER

**NOTE:** Apply continuous bead of sealant to inside corners of mullion cover before installing to units.

WOOD TRIM  
BY OTHER

1" x 1/2" CROWN  
STAPLE B.O.

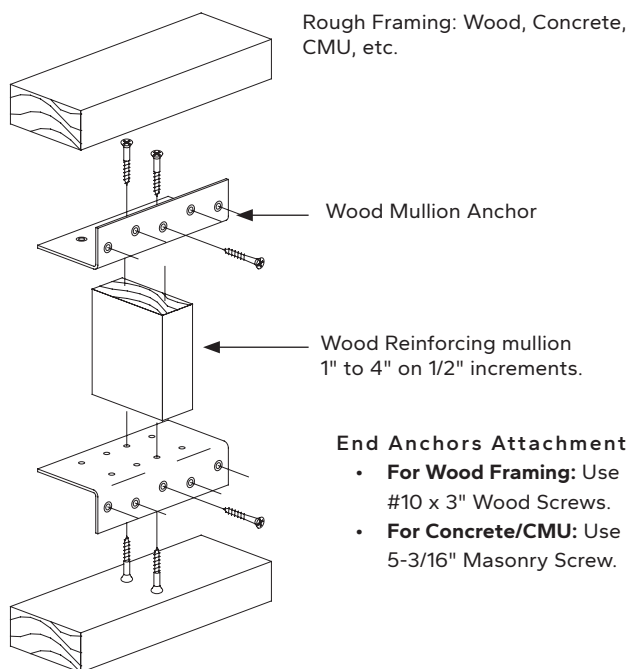


CONTINUOUS  
SEALANT BY OTHER

### Example Assembly

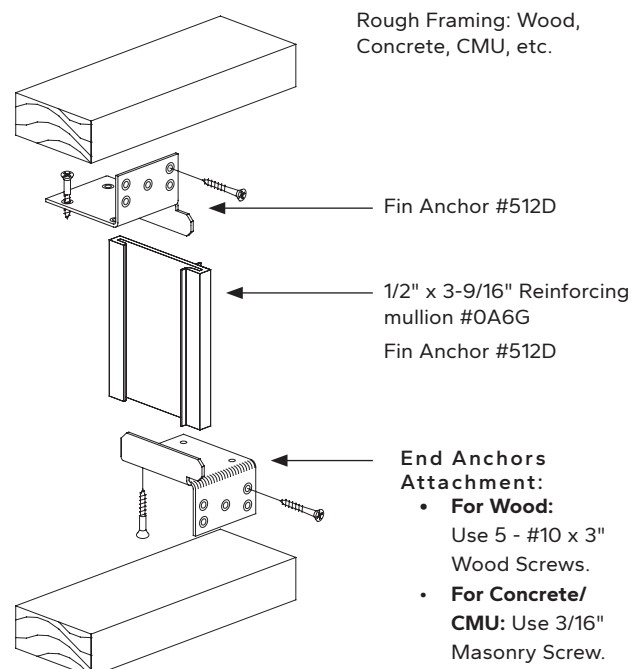
Refer to the Combination Recommendations section and Combination size tables to determine required reinforcement method.

#### Factory Assembled Wood Mullion End Anchors



Screws have a 1" embedment into wood buck or concrete below subsill.

#### 1/2" Fin Mullion End Anchors



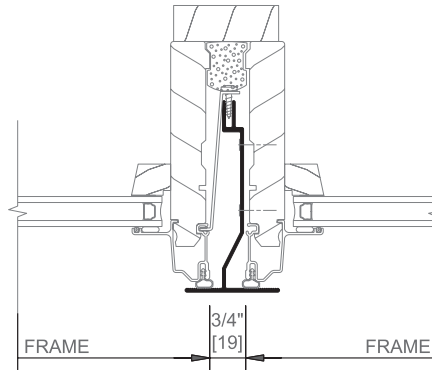
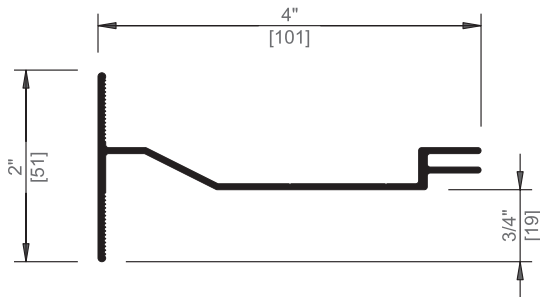
The 1/2" mullion assembly with end anchors 512D (fin mullion anchor), 000F (high performance fin mullion anchor) or 512A (wood fin mullion anchor) allow for installation of combinations that are assembled prior to being placed in the opening. Combinations assembled with this method should not exceed 144 square feet in total size. Always handle combinations in vertical orientation.



## Installation Accessories

### Expansion Mullions, T-Expansion Mullion - Cover Applications

T-EXPANSION MULLION #72AL



Used when a narrow expansion mullion appearance is desired. Sub sill recommended for use with this accessory. Not to be used as mullion reinforcement. Use in vertical mullion applications only.

Wood Trim by Others. Attach to one window unit only.

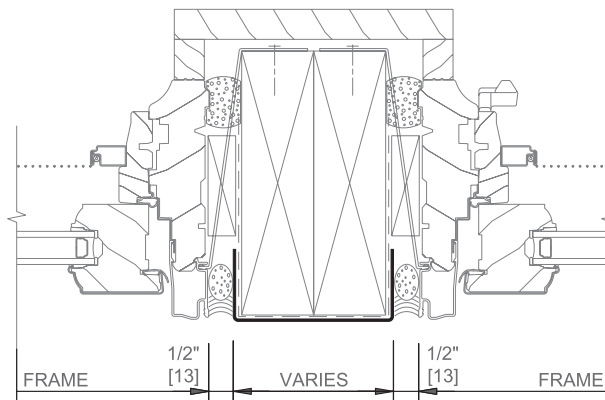
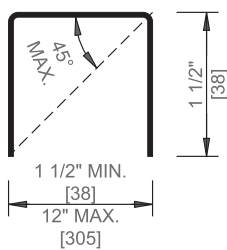
1" Continuous Bead of DOW® GREAT STUFF™ PRO Window and Door Sealant.

INSTALLATION CLIP #5027 @ 18" (457) O.C.

T-EXPANSION MULLION #72AL. SCREW TO WINDOW FRAME @ 18" (457) O.C.

VINYL BULB GASKET #0DA9.

SPECIAL EXPANSION MULLION COVER #49A1M101



Fabricated of 0.050" (1.27) aluminum to custom dimensions as required.

Wood Trim by Others. Attach to one window unit only.

1" Continuous Bead of DOW® GREAT STUFF™ PRO Window and Door Sealant.

INSTALLATION CLIPS #5071 @ 18" (457) O.C.

Shim and Plumb Units as Required

Water Resistant Backer Rod and Sealant. by Others

CUSTOM 0.050" (1.27) ALUMINUM MULLION COVER

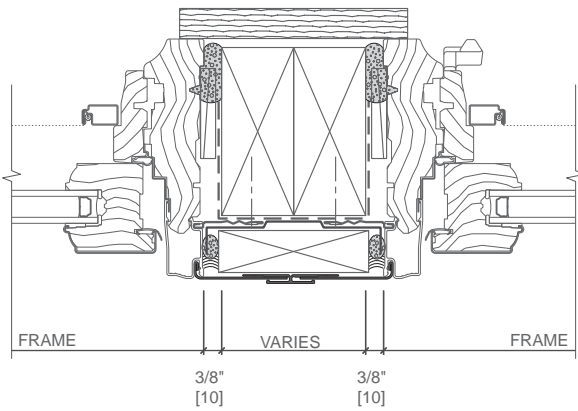


## Installation Accessories

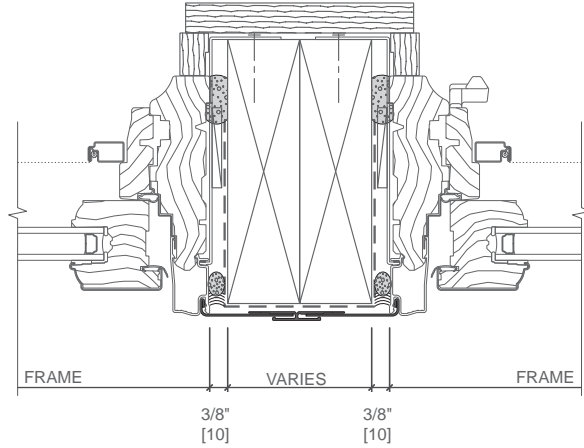
### Expansion Mullion Cover Applications

Scale 3" = 1' 0"

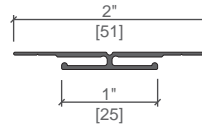
Fin Installation



Clip Installation

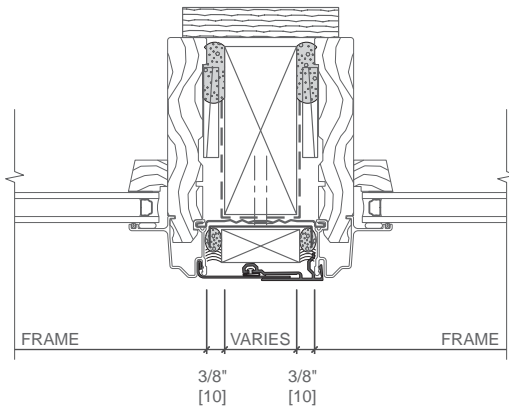


EXPANSION MULLION COVER  
72HF

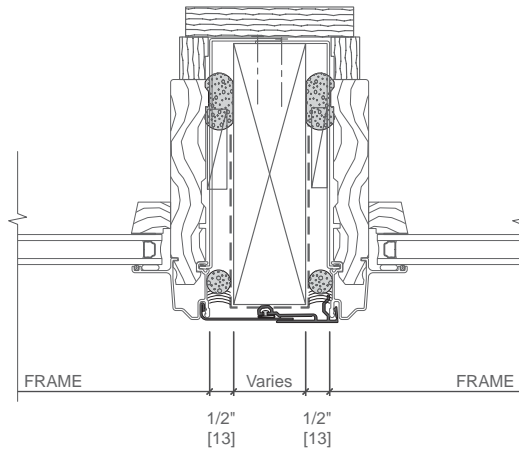


INSTALLATION CLIPS #5071 @ 18" (457) O. C.  
SHIM AND LEVEL UNITS AS REQUIRED  
CONTINUOUS WOOD BLOCKING, WOOD  
TRIM, BACKER ROD AND SEALANT BY  
OTHERS

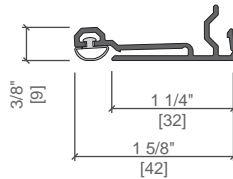
Fin Installation



Clip Installation



EXPANSION MULLION COVER WITH  
VINYL BULB GASKET  
1AAF



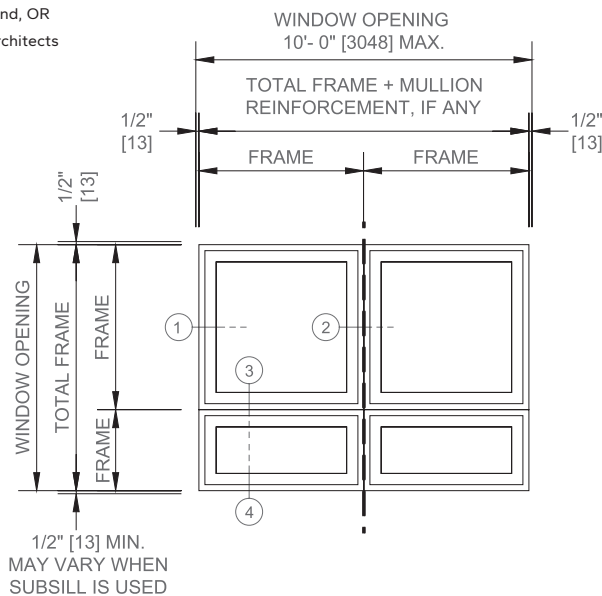
INSTALLATION CLIPS #5071 @ 18" (457) O. C.  
CONTINUOUS WOOD BLOCKING, WOOD TRIM,  
BACKER ROD AND SEALANT BY OTHERS

**NOTE:** APPLY CONTINUOUS BEAD OF SEALANT TO INSIDE CORNERS  
OF MULLION COVER BEFORE INSTALLING UNITS.



Burlington Apartments, Portland, OR  
Ankrom Moisan Associated Architects

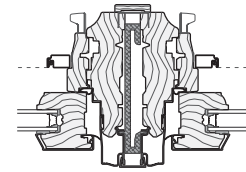
These recommendations apply to a typical grouping of any combination of window units that form a four-way mullion intersection.



Refer to single-unit opening recommendations in addition to the following:

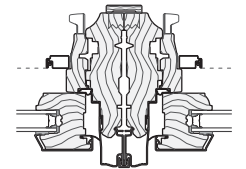
- ① 1/2" clearance is recommended at each jamb in masonry construction and/or when window opening height or width is 10' or greater.
- ② All four-way mullion intersections require reinforcing mullion in one direction (either vertically or horizontally). See mullion load chart pages in the Installation section on PellaADM.com.
- ③ Check combination (joining) mullion limitation for specified wind loading. Combination (joining) and reinforcing mullions are shown on the mullion load chart pages in the Installation section on PellaADM.com.
- ④ Subsill systems that weep incidental moisture to the exterior are recommended for water management in openings where the potential for water infiltration is increased and may not be adequately managed by the building weather barrier, flashings and drainage system. Sample conditions include, but are not limited to: increased level of exposure due to multi-story construction, high weather exposure, recaulking would be difficult or unlikely, non-standard installation methods, or when there are multiple units joined within the opening.

If lower unit is venting, horizontal reinforcing mullion may be required to carry weight of upper units. See Weight Limitations Over Windows information in the Installation and Performance section on [PellaADM.com](http://PellaADM.com).



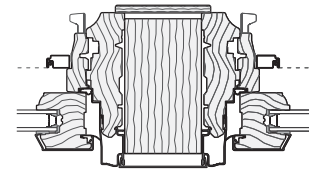
1/2" x 3 9/16" Aluminum

**Mullion Reinforcement**  
1/2" x 3-9/16"



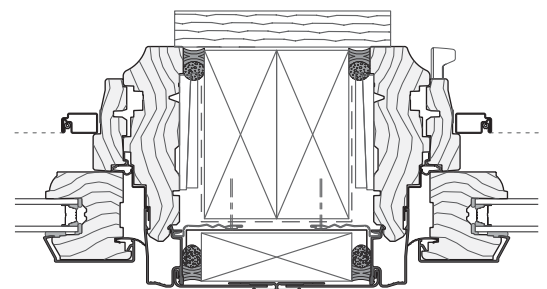
**Joining Mullion**

**Standard Mullion Cover**



1" to 4" Wood Spread

**Mullion Cover**  
(Range: Frame to Frame 1" to 4")



72HF Expansion Trim for clip/anchor through frame or fin installation

**Expansion Mullion Cover**





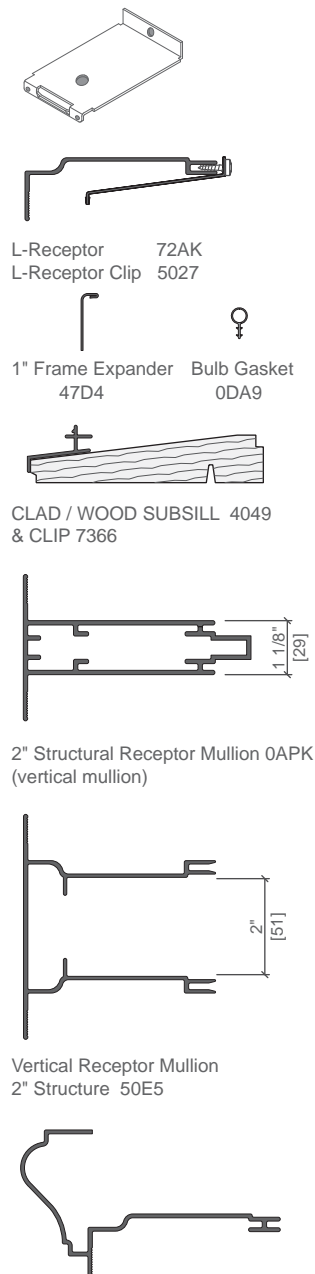
## Installation Accessories

### L-Receptor and 2" Vertical Structural Receptor

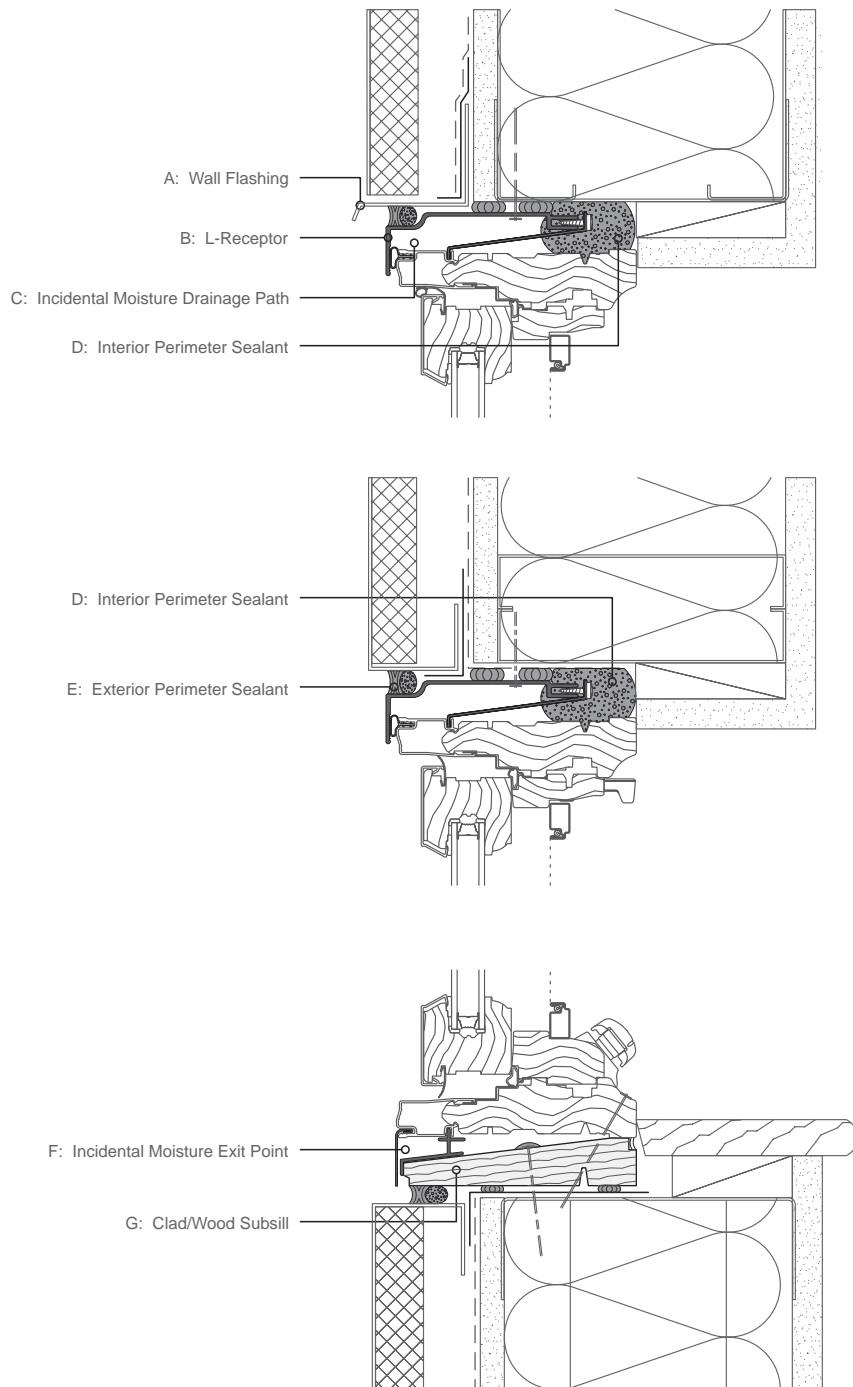
#### L-Receptor Installation for Aluminum-clad Products

An L-shaped receptor is secured to the head and jambs of the opening and a subsill flashing system at the sill. A compressible gasket is installed in the accessory groove. Clips attached to the frame at the head and jambs are screwed to the receptors, compressing the gasket.

Windows and doors can be installed from the interior before or after wall cladding materials.



Custom profiles available.  
Contact your Pella representative  
for assistance.



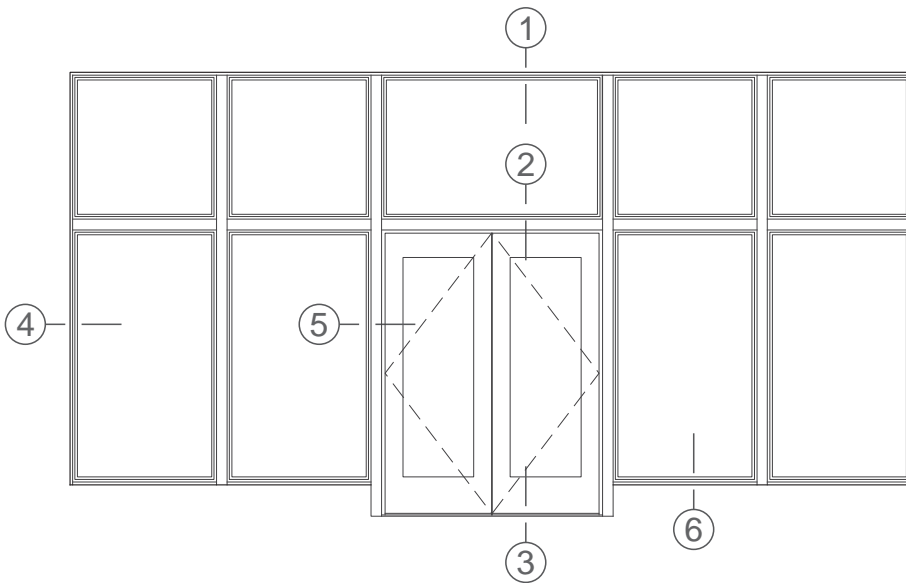


## Installation Accessories

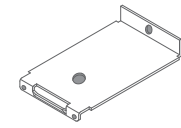
### New Construction — Store Fronts



Burlington Apartments, Portland, OR  
Ankrom Moisan Associated Architects



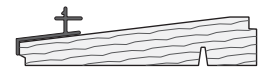
Elevation



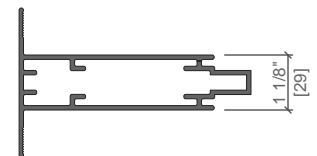
L-Receptor 72AK  
L-Receptor Clip 5027



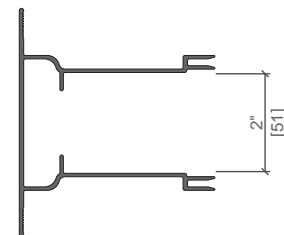
1" Frame Expander 47D4  
Bulb Gasket 0DA9



CLAD / WOOD SUBSILL 4049  
& CLIP 7366



2" Structural Receptor Mullion OAPK  
(vertical mullion)

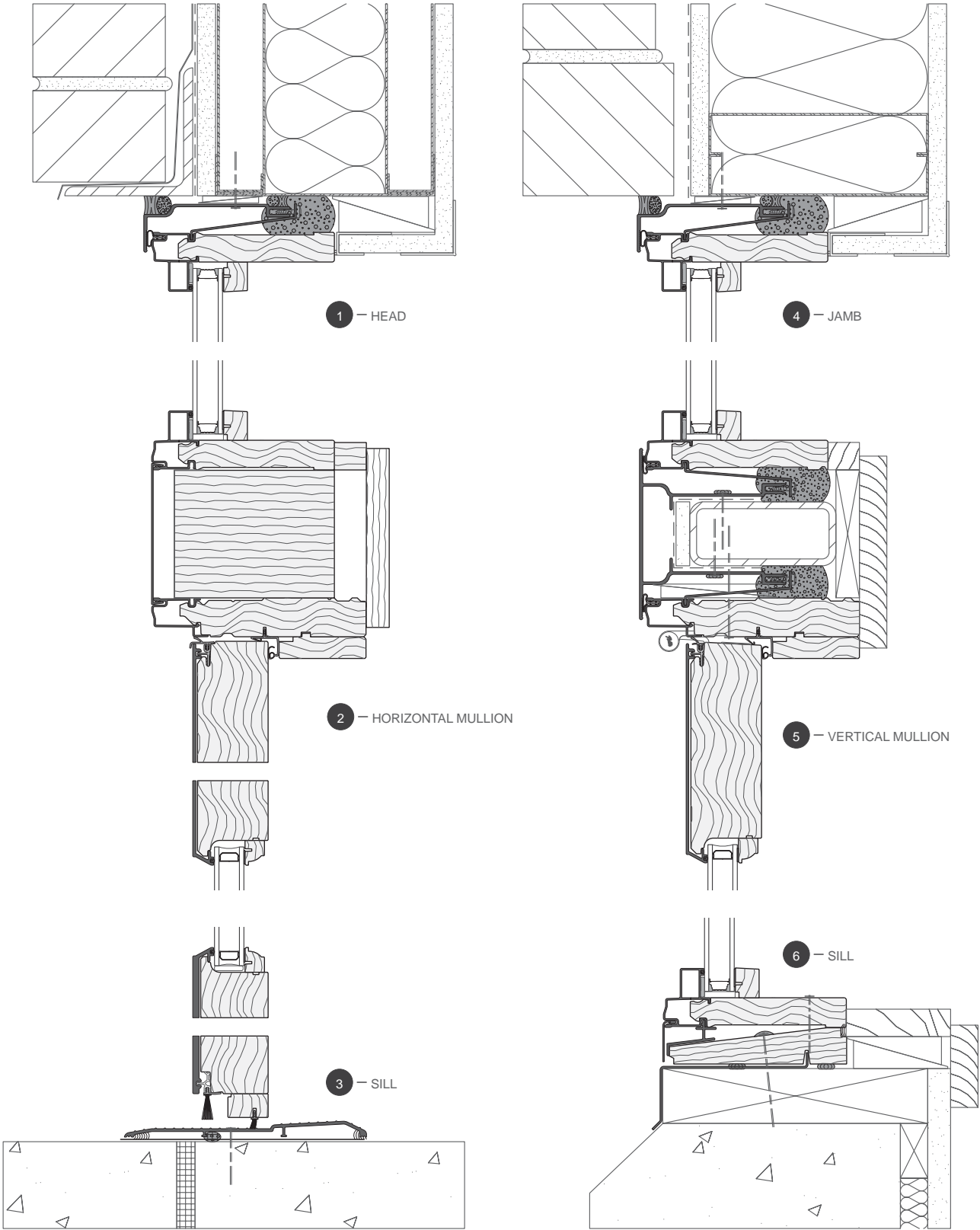


Vertical Receptor Mullion  
2" Structure 50E5

Refer to single-unit opening recommendations in addition to the following:

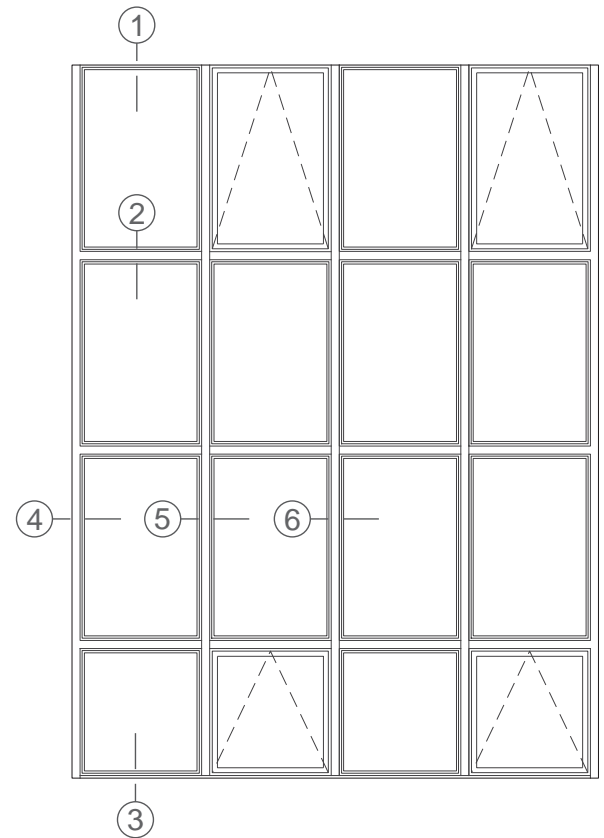
- 1/2" clearance is recommended at each jamb in masonry construction and/or when window opening height or width is 10' or greater.
- All four-way mullion intersections require reinforcing mullion in one direction (either vertically or horizontally). See mullion load chart pages in the Installation section on PellaADM.com.
- Check combination (joining) mullion limitation for specified wind loading. Combination (joining) and reinforcing mullions are shown on the mullion load chart pages in the Installation section on PellaADM.com.
- Subsill systems that weep incidental moisture to the exterior are recommended for water management in openings where the potential for water infiltration is increased and may not be adequately managed by the building weather barrier, flashings and drainage system. Sample conditions include, but are not limited to: increased level of exposure due to multi-story construction, high weather exposure, recaulking would be difficult or unlikely, non-standard installation methods, or when there are multiple units joined within the opening.

If lower unit is venting, horizontal reinforcing mullion may be required to carry weight of upper units. See Weight Limitations Over Windows information in the Installation and Performance section on PellaADM.com.





Environmental Nature Center, Newport Beach, CA; LPA Inc. LEED® Platinum  
Photo © Costea Photography, Inc.

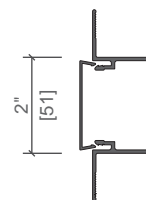


ELEVATION

Refer to single-unit opening recommendations in addition to the following:

- 1/2" clearance is recommended at each jamb in masonry construction and/or when window opening height or width is 10' or greater.
- All four-way mullion intersections require reinforcing mullion in one direction (either vertically or horizontally). See mullion load chart pages in the Installation section on PellaADM.com.
- Check combination (joining) mullion limitation for specified wind loading. Combination (joining) and reinforcing mullions are shown on the mullion load chart pages in the Installation section on PellaADM.com.
- Subsill systems that weep incidental moisture to the exterior are recommended for water management in openings where the potential for water infiltration is increased and may not be adequately managed by the building weather barrier, flashings and drainage system. Sample conditions include, but are not limited to: increased level of exposure due to multi-story construction, high weather exposure, recaulking would be difficult or unlikely, non-standard installation methods, or when there are multiple units joined within the opening.

If lower unit is venting, horizontal reinforcing mullion may be required to carry weight of upper units. See Weight Limitations Over Windows information in the Installation and Performance section on PellaADM.com.



Vertical Mullion  
Window Wall Channel 2" Structure 50E4  
1 1/2" Mullion Cover 736B



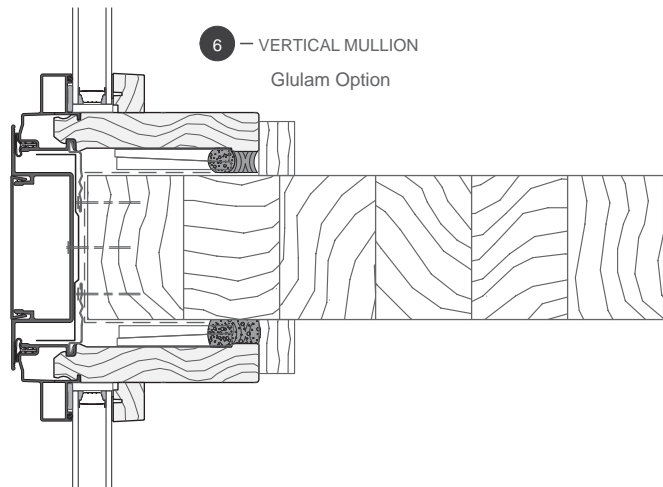
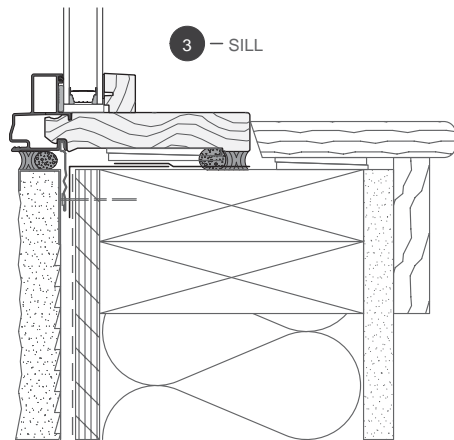
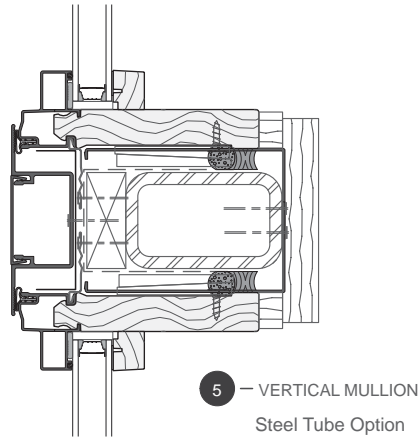
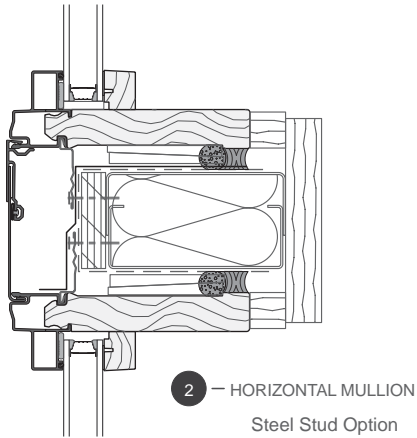
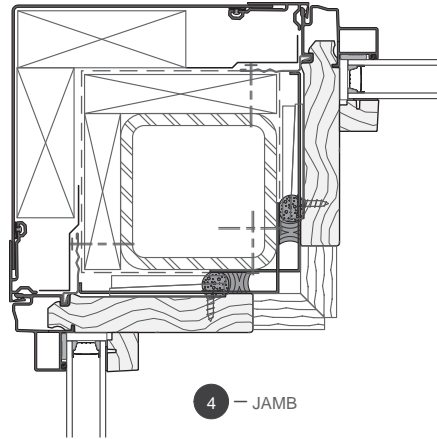
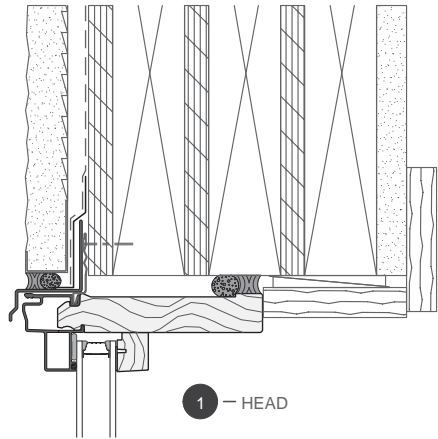
Horizontal Mullion  
Expansion Cover with Gasket 1AAF

Standard Frame Expander



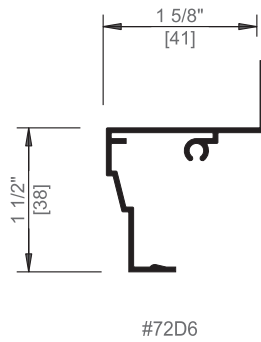
Installation Accessories

New Construction — Window Walls



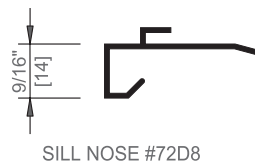


Scale 6" = 1' 0"

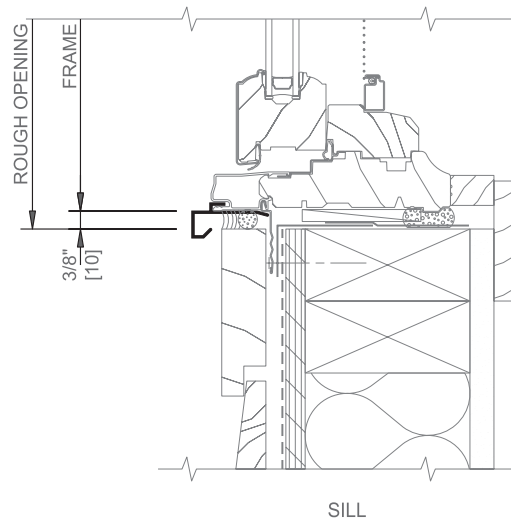
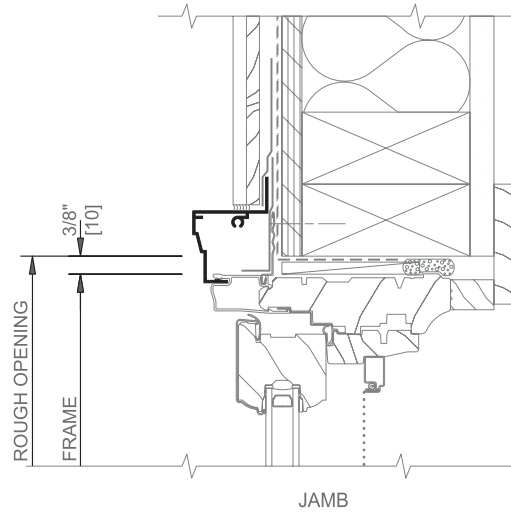
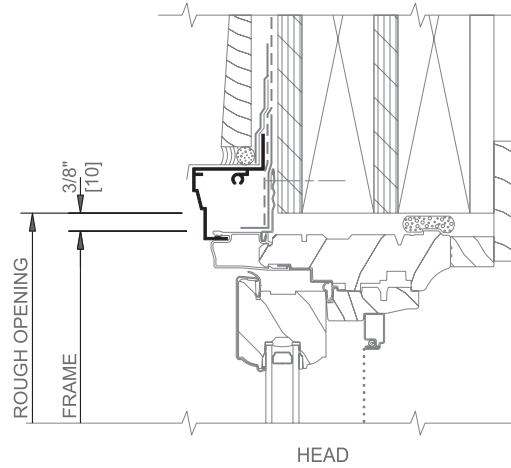


SHIM AND LEVEL UNITS AS REQUIRED

CONTINUOUS WOOD BLOCKING,  
WOOD TRIM, BACKER ROD AND  
SEALANT BY OTHERS



Scale 3" = 1' 0"

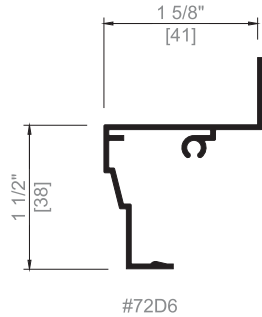




## Installation Accessories

### Field Applied Exterior Traditional Trim and Clad Sill Nose - Brick Veneer Application

Scale 6" = 1' 0"



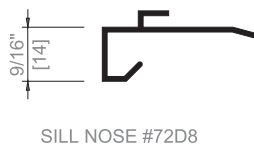
Protect units from excess mortar when placing brick around opening.

SHIM AND LEVEL UNITS AS REQUIRED

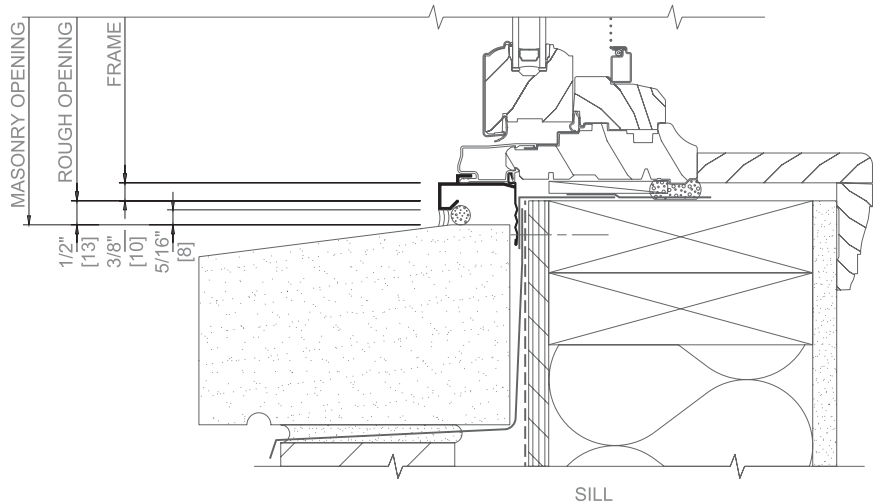
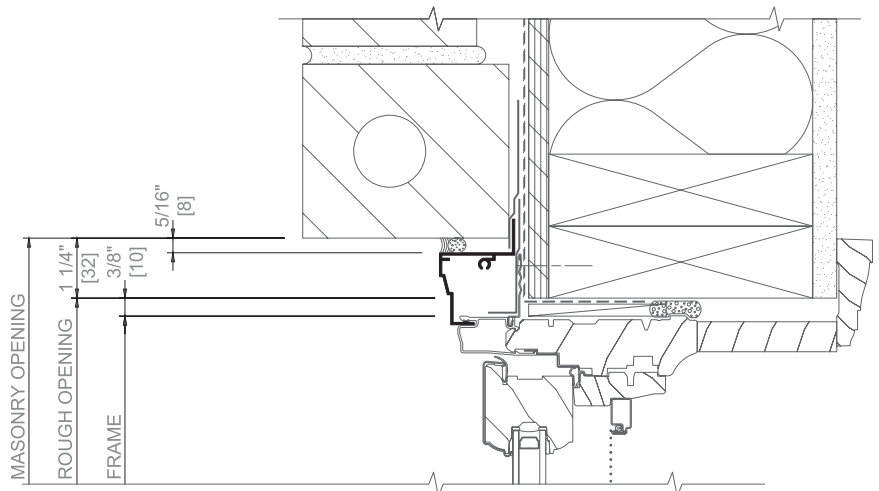
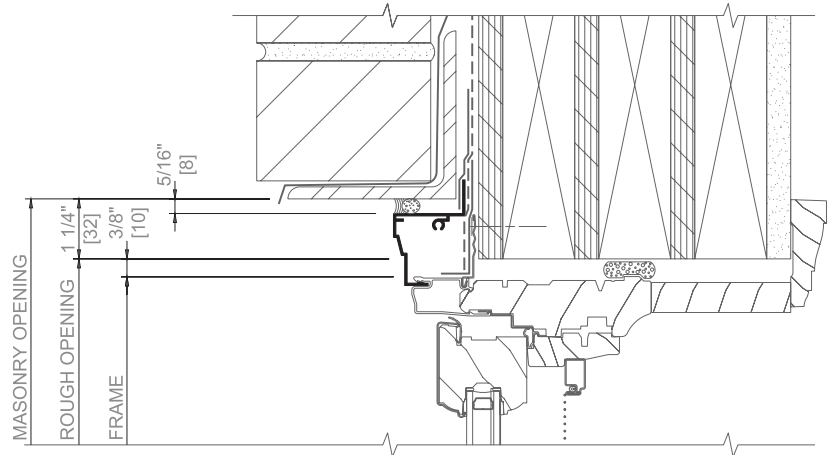
CONTINUOUS WOOD BLOCKING, WOOD TRIM, BACKER ROD AND SEALANT BY OTHERS

#### Field Applied Exterior Trim

Accessory	Indiv. Part No.	Box No.
Traditional Trim	72D6	ODC3
3-1/2" Flat Trim Head	72D4	ODC4
3-1/2" Flat Trim Jamb	72D5 72E0	ODC5
1/2" Clad Sill Nose	72D8	ODC6



Scale 3" = 1' 0"

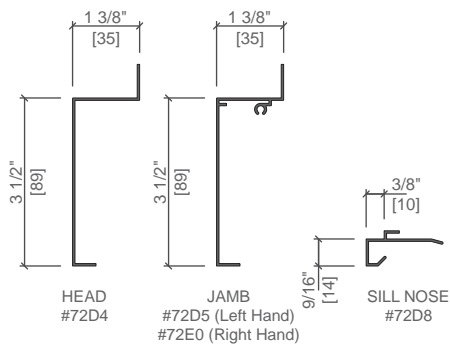
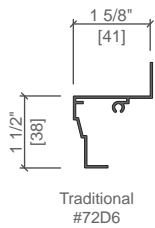


Aluminum traditional flat trim is to be used in frame construction with standard installation fins only.  
Maximum length is 8'.

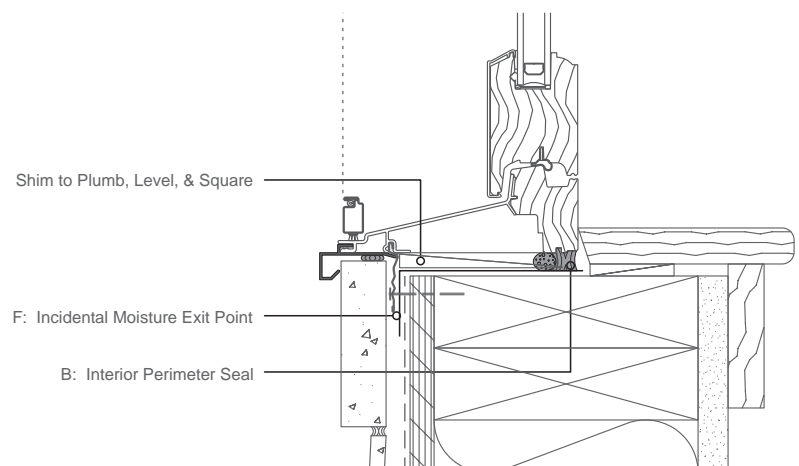
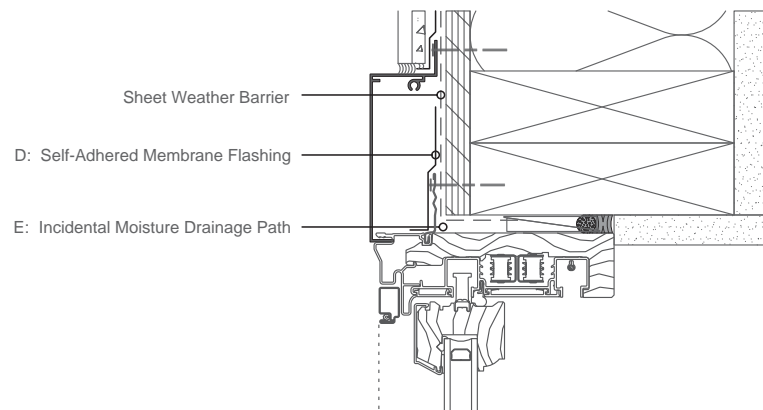
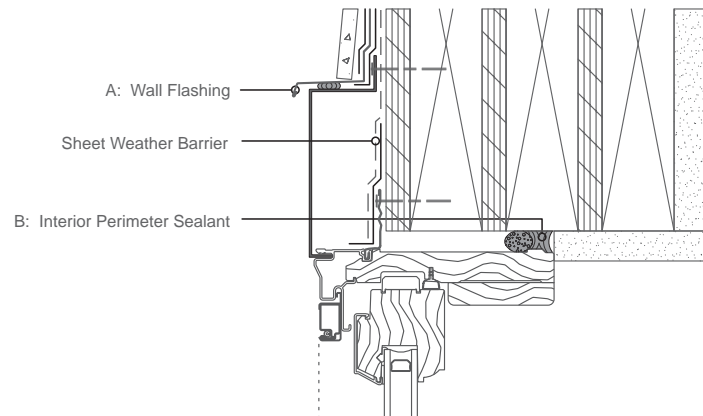


## Installation Accessories

### Field Applied Exterior Flat Trim and Clad Sill Nose - Siding Application



Custom profiles available.



Aluminum traditional flat trim is to be used in frame construction with standard installation fins only.  
Maximum length is 8'.

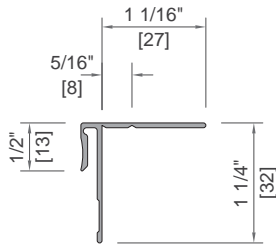




## Installation Accessories

### Frame Expander, Frame Expander Receptor

Scale 6" = 1' 0"



FRAME EXPANDER RECEPTOR

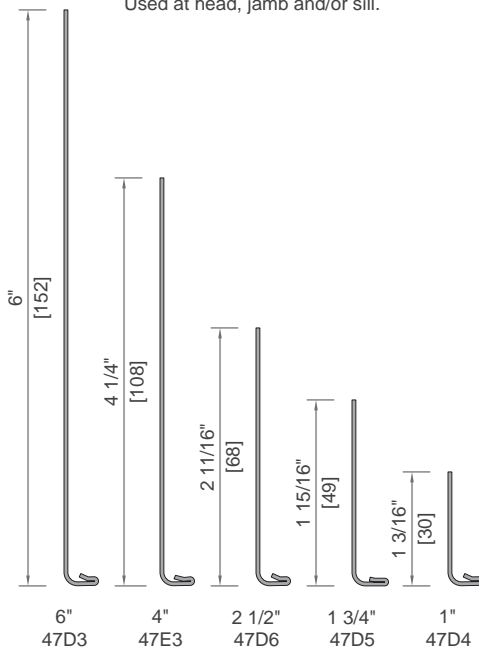
Used to receive and trim outside edge of frame expander as an alternate to face-screwing edge into blocking. Return leg can be field-trimmed as required.

#### Application: New Construction or Renovation

- For use with aluminum-clad wood windows
- Provides the look of flat trim
- Receptor available for wide trims
- Paint finish that matches windows
- Available with or without brickmould
- Custom brickmould profiles available
- Straight or curved
- Trim to frame opening
- Factory Supplied Frame Expander Kits available, trim is processed and notched to length per unit configuration, saves time and scrap on the job site.

#### Frame Expander

Used at head, jamb and/or sill.



Scale 3" = 1' 0"

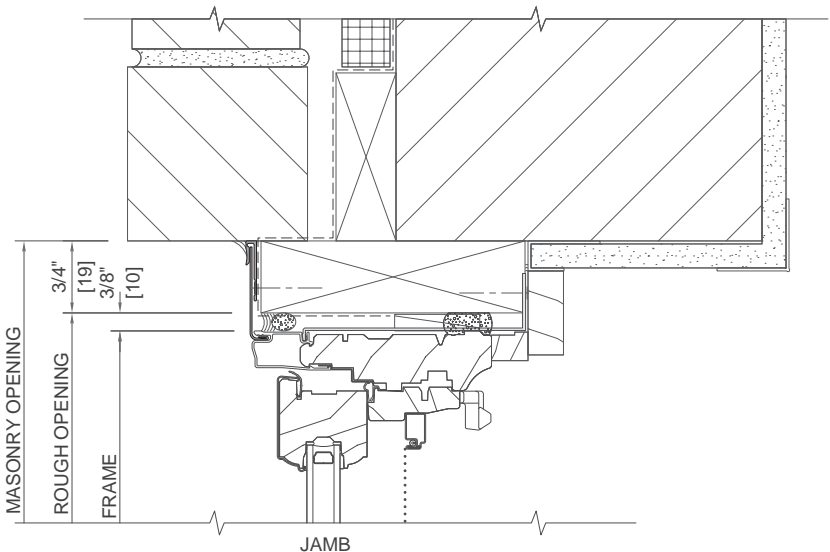
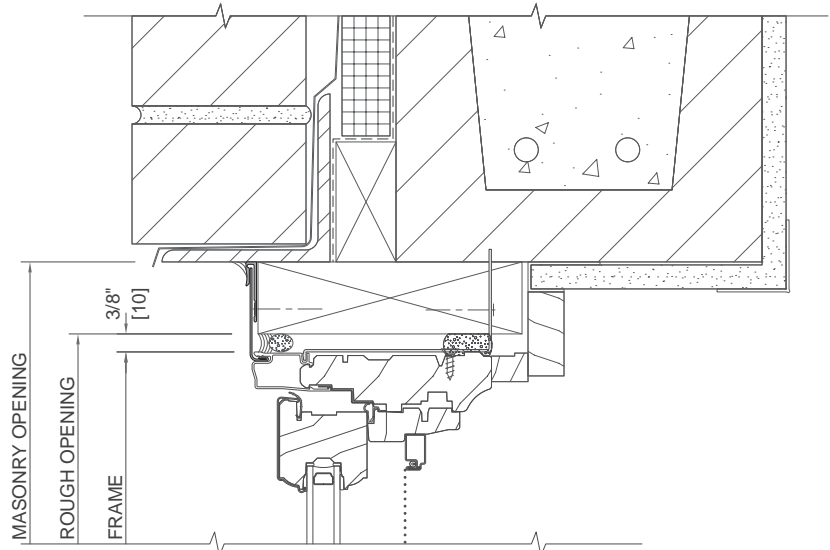
PELLA Window and Door Installation Sealant, and Water Resistant Backer Rod and Sealant, by Others

Low Expansion, Low Pressure Polyurethane Insulating Window and Door Sealant. (do not use high pressure or latex foam.)

Continuous Wood Blocking, Wood Trim Continuous Bead of Sealant by Others.

INSTALLATION CLIPS @ 16" (457) O.C.

1-15/16" FRAME EXPANDER FRAME EXPANDER RECEPTOR



Continuous Wood Blocking, Wood Trim Continuous Bead of Sealant by Others.

PELLA Window and Door Installation Sealant, and Water Resistant Backer Rod and Sealant, by Others

Low Expansion, Low Pressure Polyurethane Insulating Window and Door Sealant. (do not use high pressure or latex foam.)

Shim Units Plumb and Level as Required

INSTALLATION CLIPS @ 16" (457) O.C.

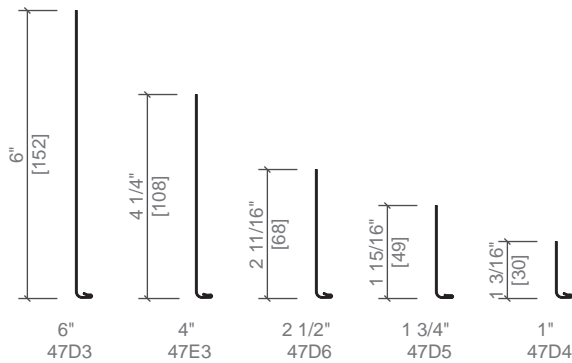
1-15/16" FRAME EXPANDER FRAME EXPANDER RECEPTOR



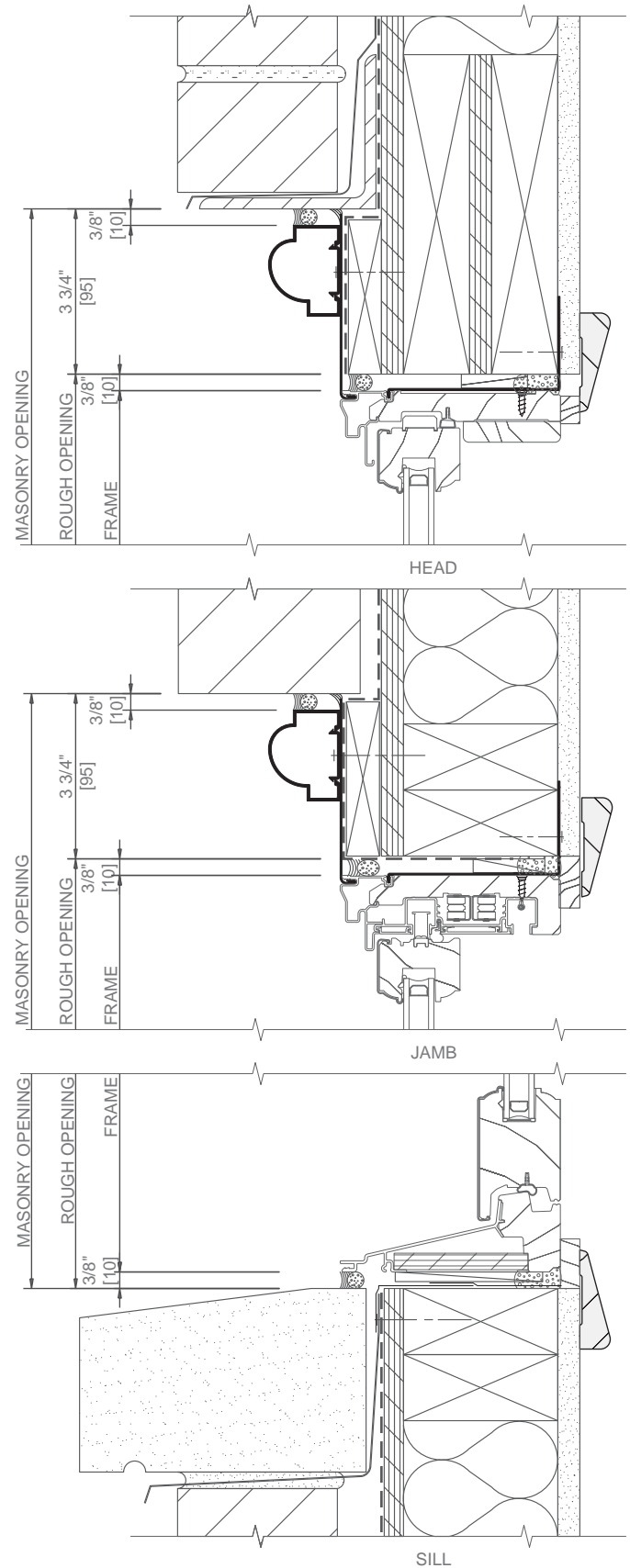
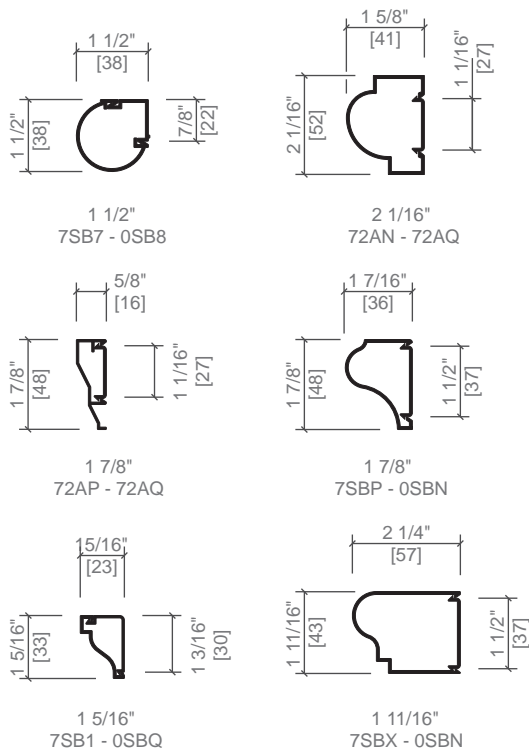
## Installation Accessories

### New Construction Exterior Trim - Aluminum Brickmould with Clip

Frame Expander



Custom Brickmould with Clip

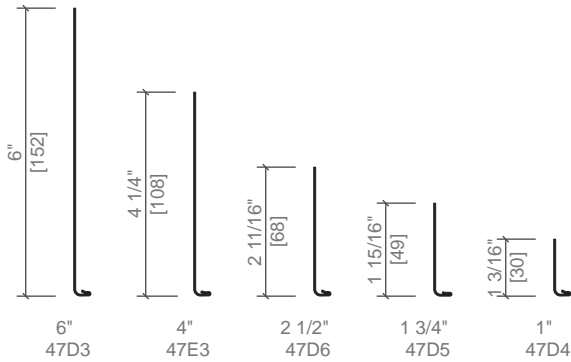


Scale 3" = 1' 0"

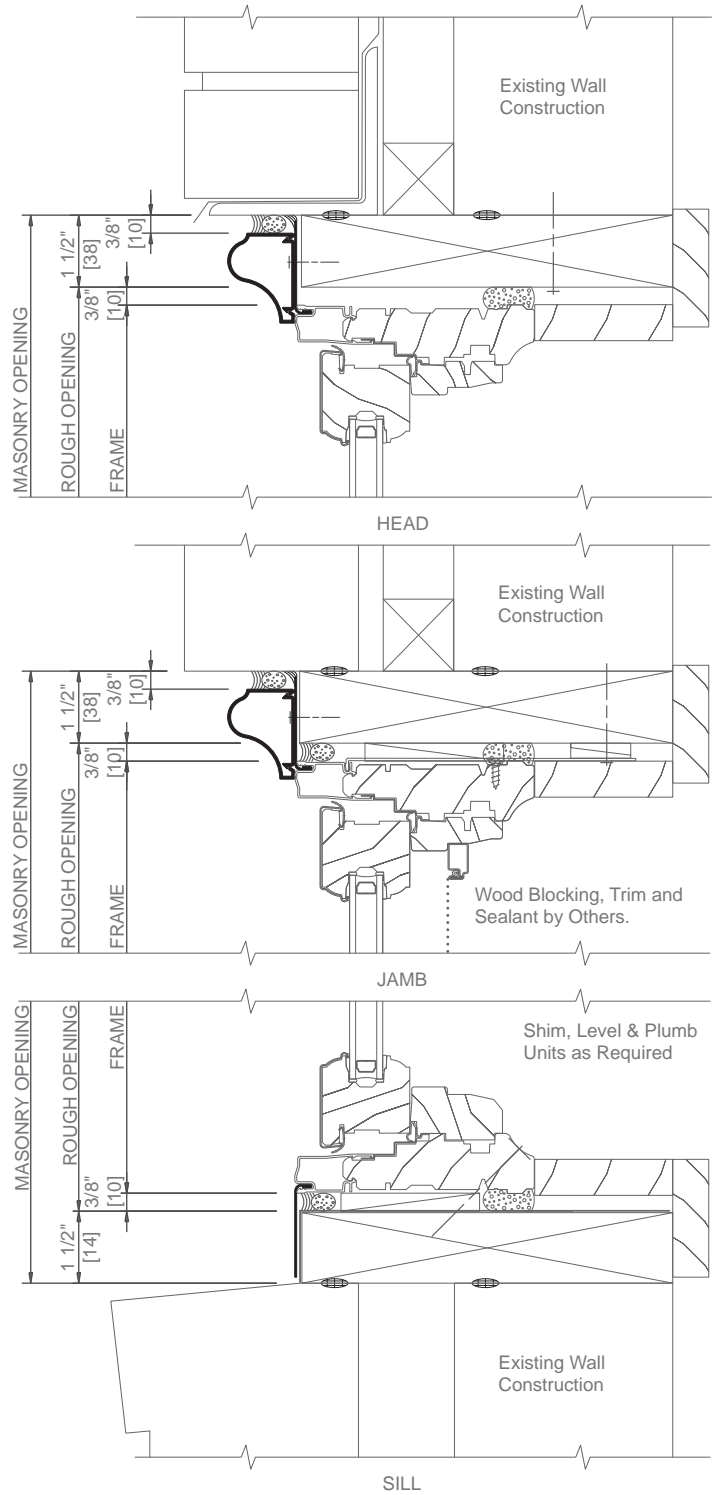
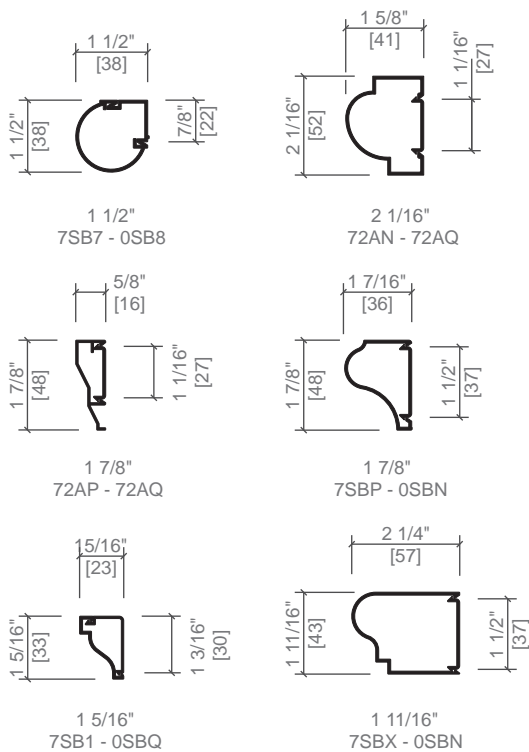


## Renovation Exterior Trim - Aluminum Brickmould with Clip

Frame Expander



Custom Brickmould with Clip





#### Historic Brickmould Extruded Frame Expanders

All other clad-wood products including  
Pella® Reserve™ Monumental Hung



Custom Trim # DES-000019876

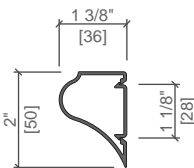
1 7/8" dimension may vary to  
accommodate project specifications.

Pella Reserve and  
Architect Series® Double-Hung

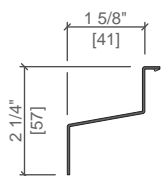


Custom Trim # DES-000019875

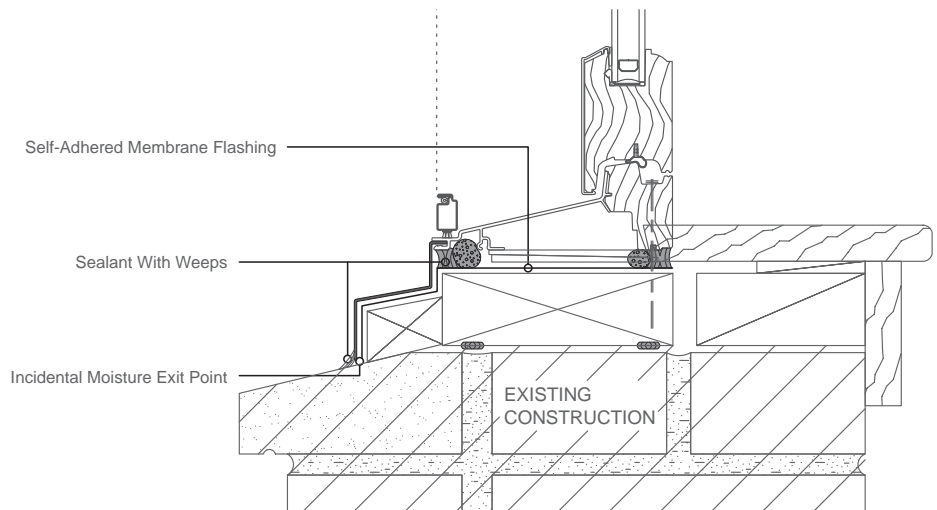
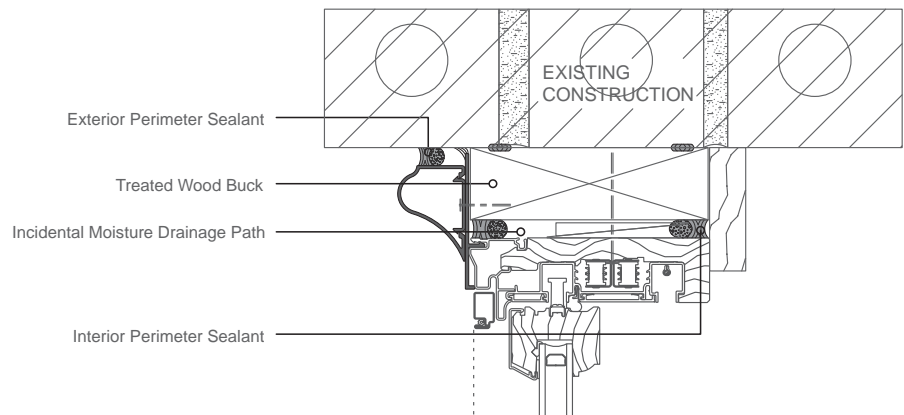
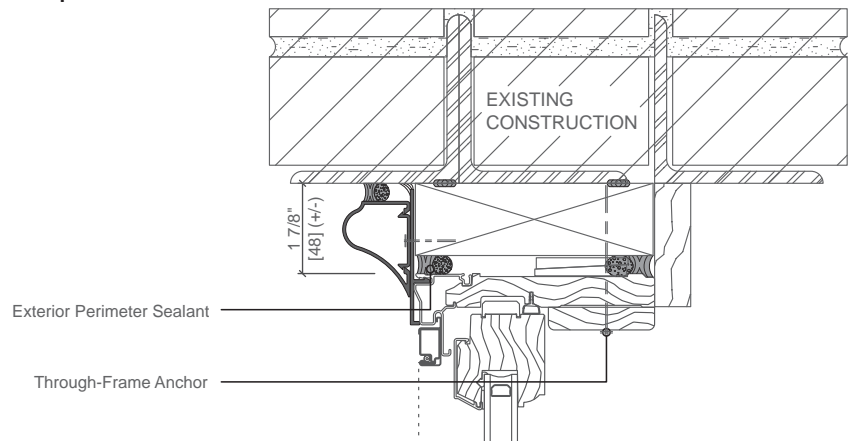
3-Step Historic Brickmould  
with Clip



Brickmould # DES-000019874  
Clip # 72AQ



Sill Cover # 49A1 M119  
119 brake metal configured  
as needed to actual project  
conditions.



\*This configuration of extruded brickmould and break metal sill cover has previously been approved for use with historic projects. It is available through custom quoting as noted below. Please verify approval with local historic review board prior to ordering. Custom variations are available upon request.

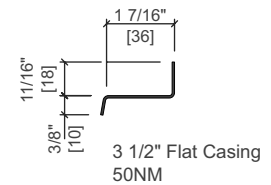
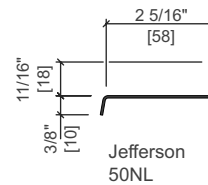
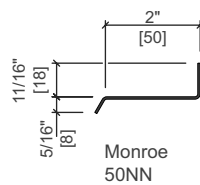
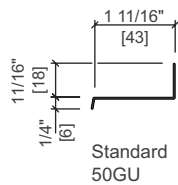


### Factory Installed Guidelines

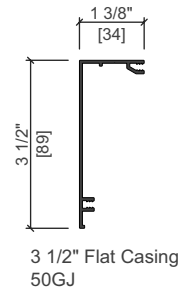
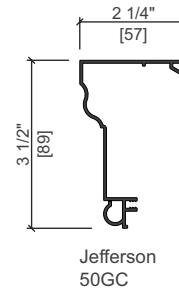
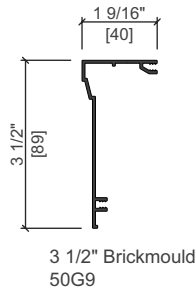
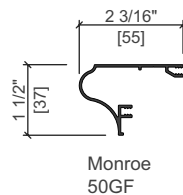
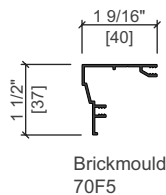
- Maximum size is 134" x 97"
- Trim comes assembled and installed on unit and includes endcaps and fins as necessary.
- Factory Applied Trim is available on all Aluminum Clad products, including curved and angled shapes, with the following exceptions:
  - Architect Series® and Lifestyle Series four-panel patio doors
  - Lifestyle Series dual-pane sliding doors
  - Precision Fit® pocket replacement windows
  - Bay / Bow windows
  - Pella® Reserve Specialty windows
  - Pella® Reserve Mitered Corner units

	1/2" Sill Nose	1" Sill Nose	2" Sill Nose	3-1/2" Flat Casing
Sill Nose Compatibility				
1-1/2" Brickmould	•	•	•	
3-1/2" Brickmould	•	•	•	
3-1/2" Flat Casing	•	•	•	•
Jefferson		•	•	
Monroe		•	•	

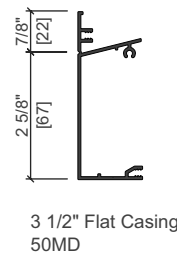
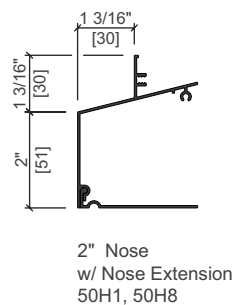
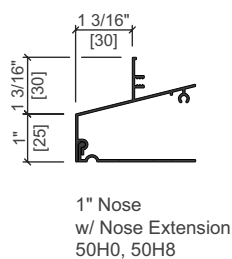
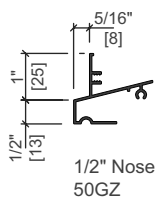
#### HEAD DRIP CAP



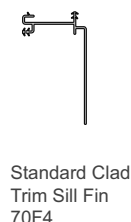
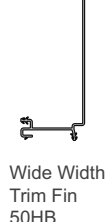
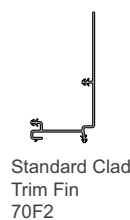
#### TRIM PROFILES



#### SILL NOSE



#### NEW CONSTRUCTION FIN

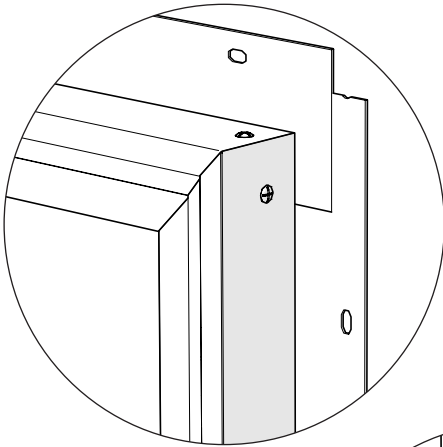


#### RENOVATION REPLACEMENT FIN





Factory Applied EnduraClad® Exterior Trim Ordering Information



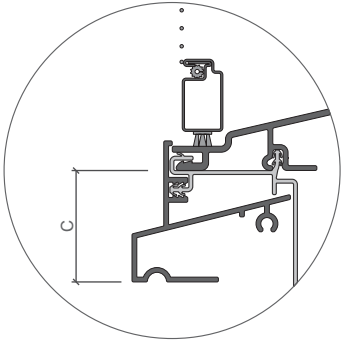
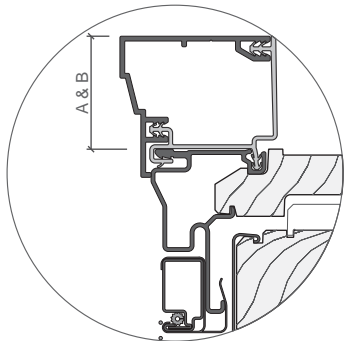
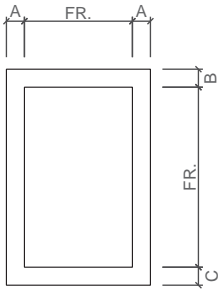
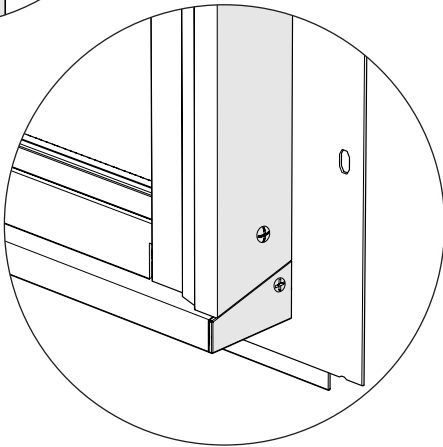
Head to Jamb joints are mitered except for 3-1/2" Flat Casing, which uses butt joints and head end caps.

All applied trim includes end caps as needed and installation fin as determined by your selections (new construction or replacement/renovation).

3-1/2" Trim fins are used for flashing purposes only, and are not intended for anchoring/attachment of the unit.

Performing whole unit field application of EnduraClad Exterior Trim in the field may result in voiding product warranties.

Jamb pieces are mitered to the slope of the sill. The sill is notched where the jambs meet the sill. Sill nose extensions are included where needed. Sill end caps are included..



	A Jamb (single)	B Head	C			
			3-1/2" Flat Casing Sill	1/2" Sill Nose	1" Sill Nose	2" Sill Nose
<b>Frame to Exterior Trim</b>						
1-1/2" Brickmould	+ 1.18"	+ 1.18"	—	+ 1.18"	+ 1.892"	+ 2.892"
3-1/2" Brickmould	+ 3.21"	+ 3.21"	—	+ 1.18"	+ 1.892"	+ 2.892"
3-1/2" Flat Casing	+ 3.21"	+ 3.21"	+ 3.21"	+ 1.18"	+ 1.892"	+ 2.892"
Jefferson	+ 3.21"	+ 3.21"	—	—	+ 1.892"	+ 2.892"
Monroe	+ 1.18"	+ 1.18"	—	—	+ 1.892"	+ 2.892"

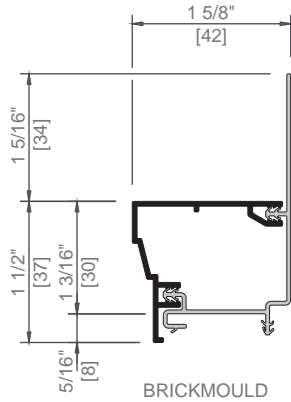
These dimensions do NOT include 3/8" per side for sealant, foam and backer rod, only the dimension of the trim beyond the unit frame.



## Installation Accessories

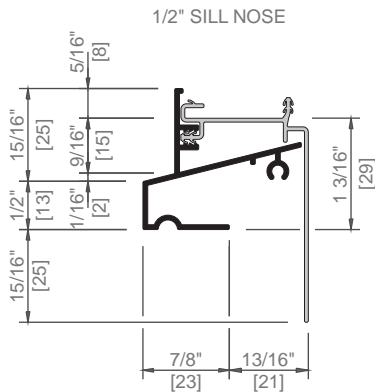
### Factory Applied EnduraClad® Exterior Trim Siding Applications

Scale 6" = 1' 0"

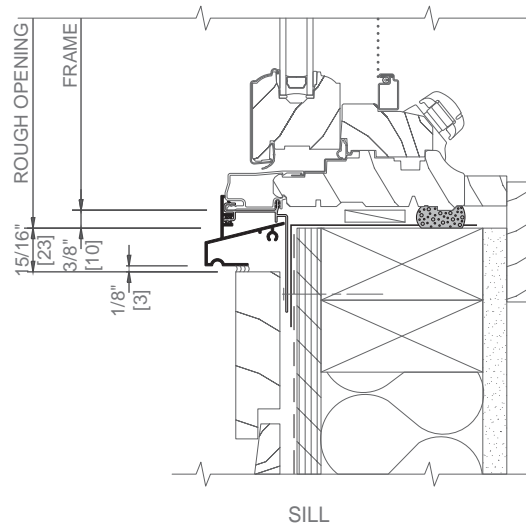
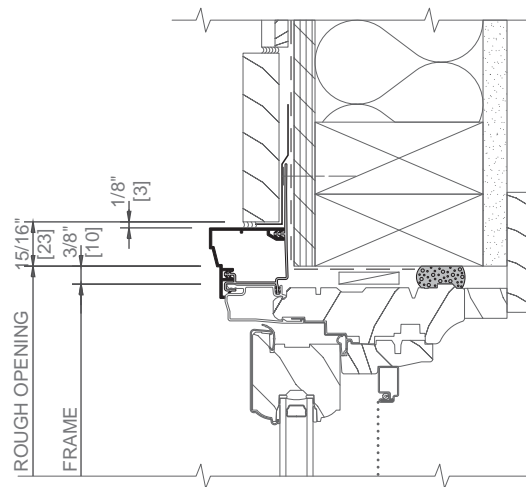
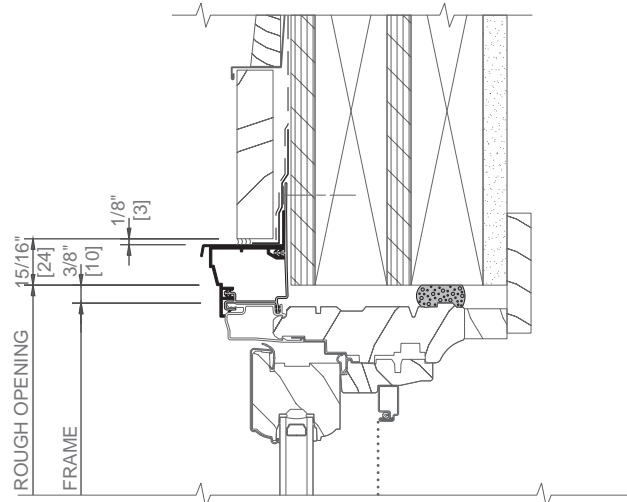


SHIM AND LEVEL UNITS AS  
REQUIRED

CONTINUOUS WOOD  
BLOCKING, WOOD  
TRIM, BACKER ROD AND  
SEALANT BY OTHERS



Scale 3" = 1' 0"

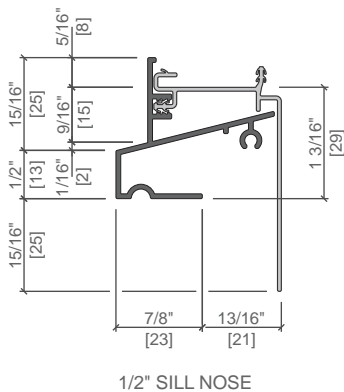
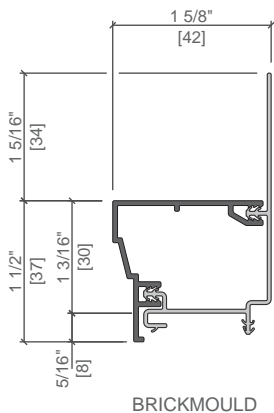
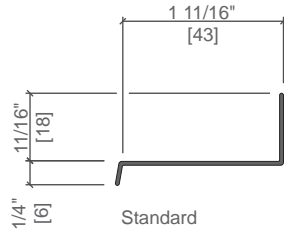




## Installation Accessories

### Factory Applied EnduraClad® Exterior Trim Brick Veneer Applications

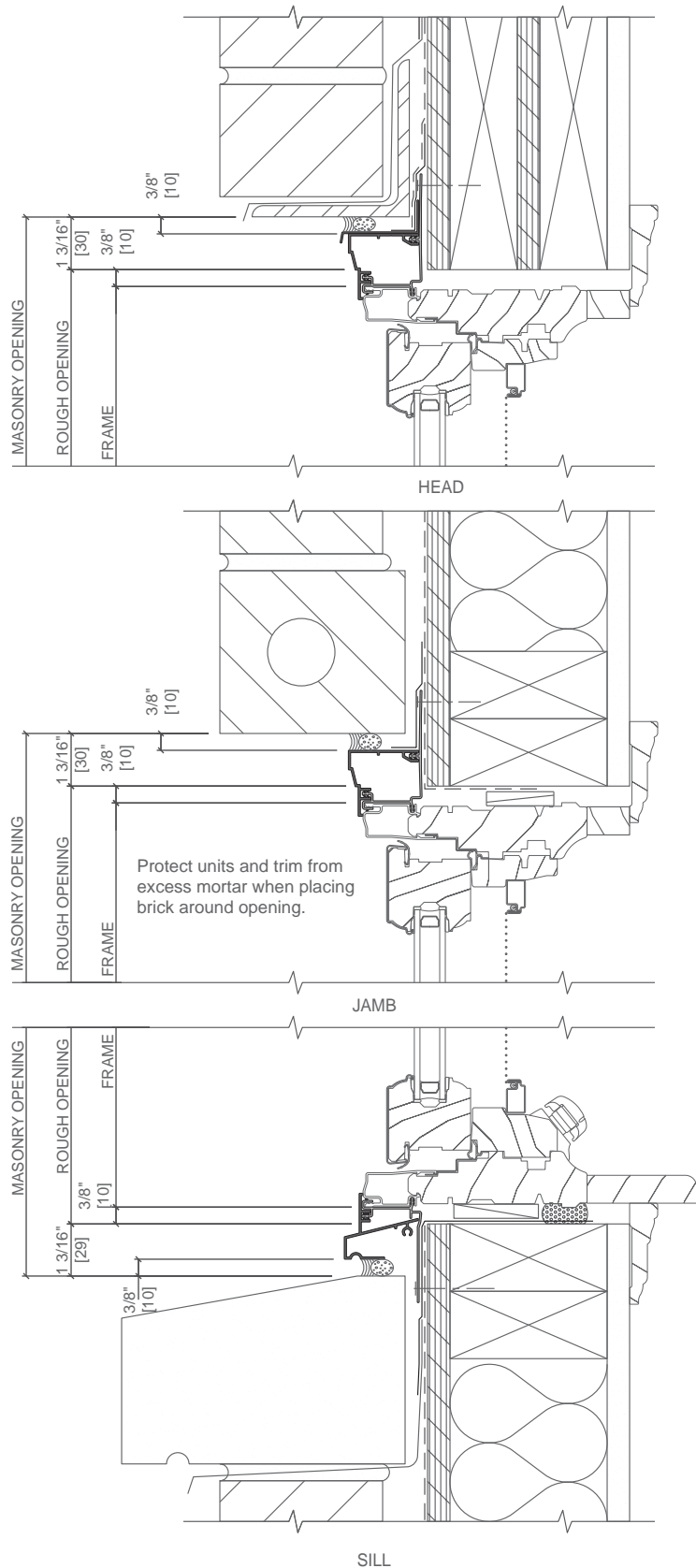
Scale 6" = 1' 0"



SHIM AND LEVEL UNITS AS REQUIRED

CONTINUOUS WOOD BLOCKING, WOOD TRIM,  
BACKER ROD AND SEALANT BY OTHERS

Scale 3" = 1' 0"

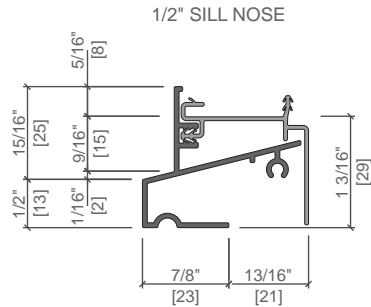
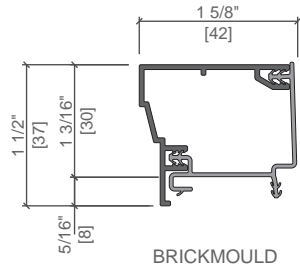






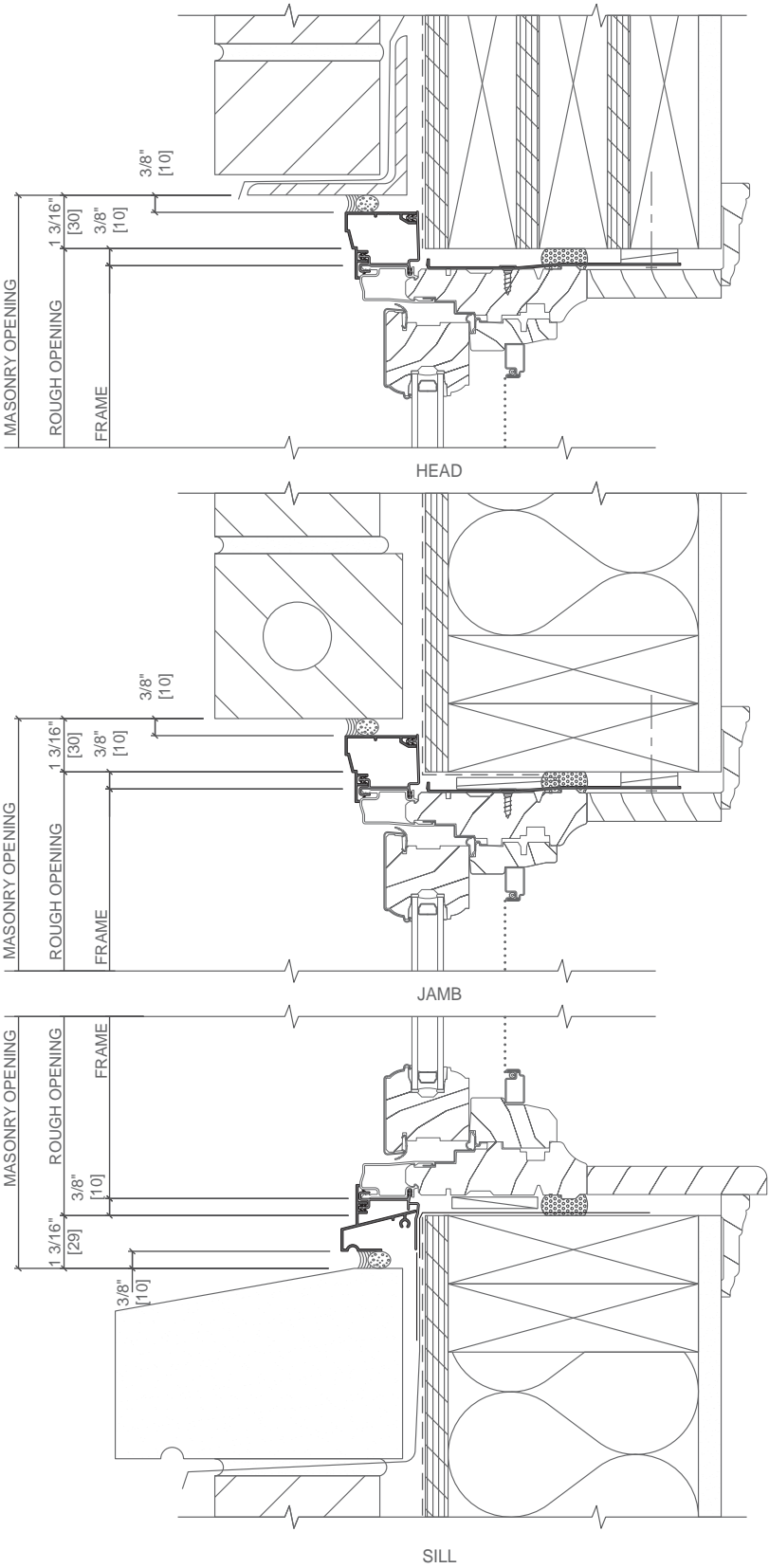
Scale 6" = 1' 0"

Scale 3" = 1' 0"



SHIM AND LEVEL UNITS AS REQUIRED

CONTINUOUS WOOD BLOCKING, WOOD TRIM,  
BACKER ROD AND SEALANT BY OTHERS



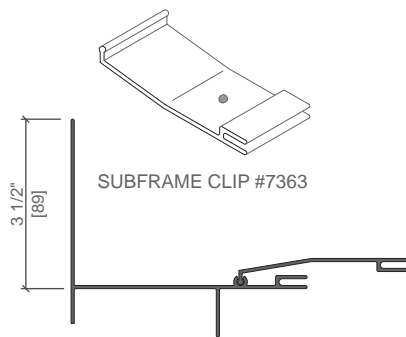


#### Subframe Installation

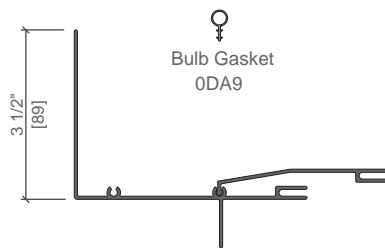
An existing wood window frame is left in place while the sashes are removed, and a pre-assembled subframe is secured to the opening. The new window is placed from the interior inside the subframe. No exterior materials are disturbed.

In many cases, all installation steps can be complete from the interior.

\*NOTE: Subframe leg may be field-cut as required.



SUBFRAME HEAD #7355



SUBFRAME JAMB #7357

Clad Wood Clip

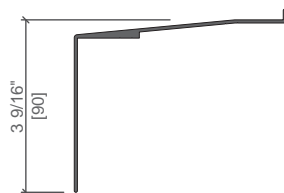


PACKAGE #0B050000:  
WINDOW CLIP #5087 AND  
#8x5/8" PAN HEAD  
PHILLIPS SCREW

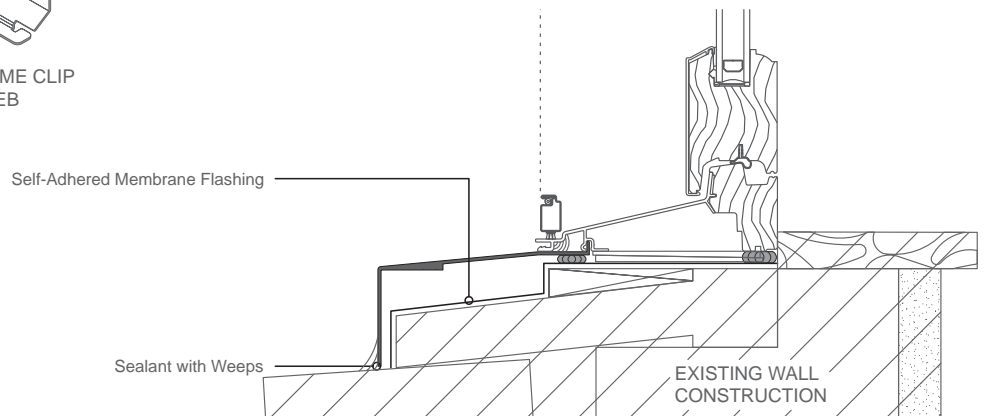
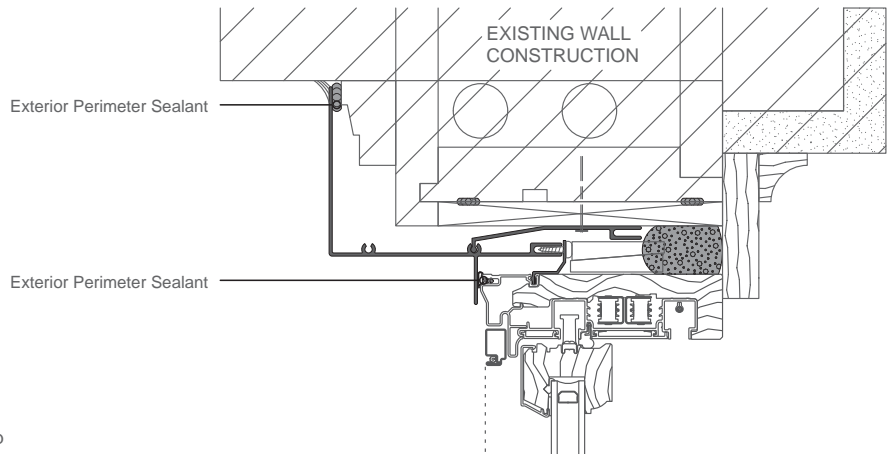
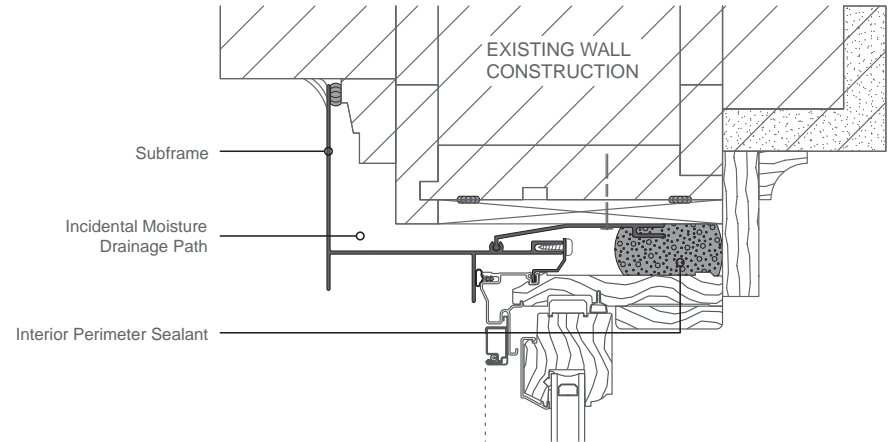
Impervia Clip



SUB FRAME CLIP  
50EB



SUBFRAME SILL #7360





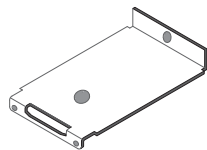
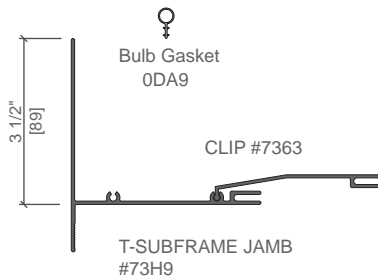
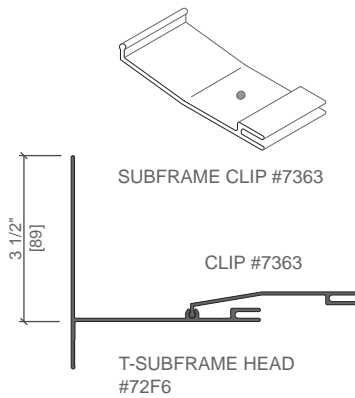
## Installation Accessories

### Receptor and Subframe Systems - T-Subframe Application

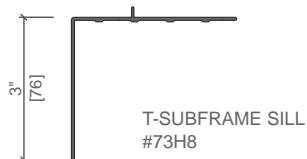
#### T-Subframe Installation

An existing aluminum or steel window frame is left in place while the sashes are removed and a pre-assembled subframe is secured to the opening. The new window is placed from the interior inside the subframe. No exterior materials are disturbed.

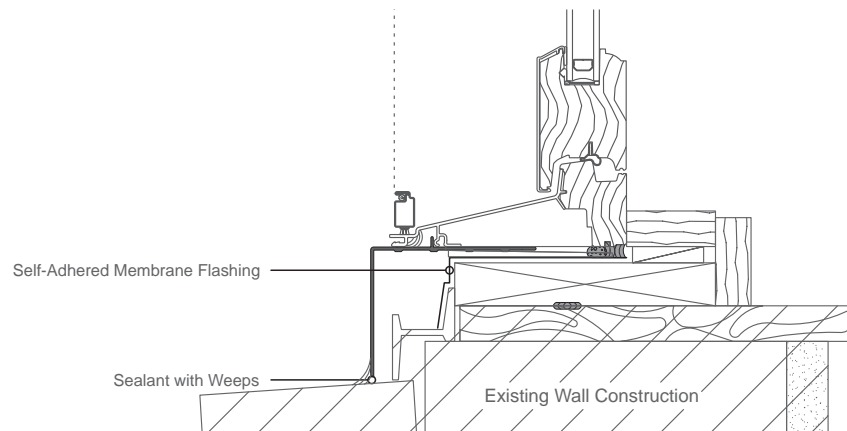
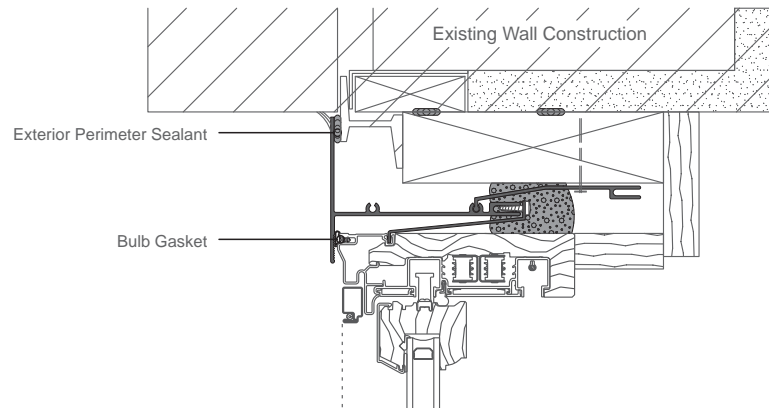
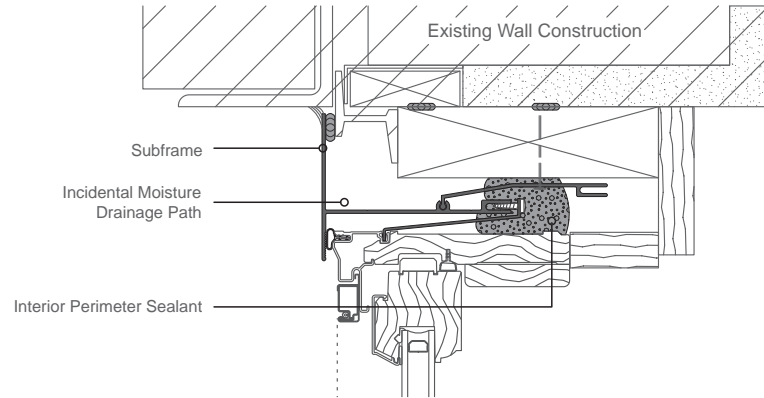
In many cases, all installation steps can be complete from the interior.



PACKAGE #0DB00000:  
WINDOW CLIP #5027 AND  
#8x5/8" PAN HEAD PHILLIPS SCREW



\*NOTE: Subframe leg may be  
field-cut as required.

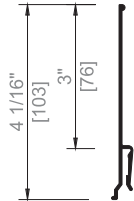




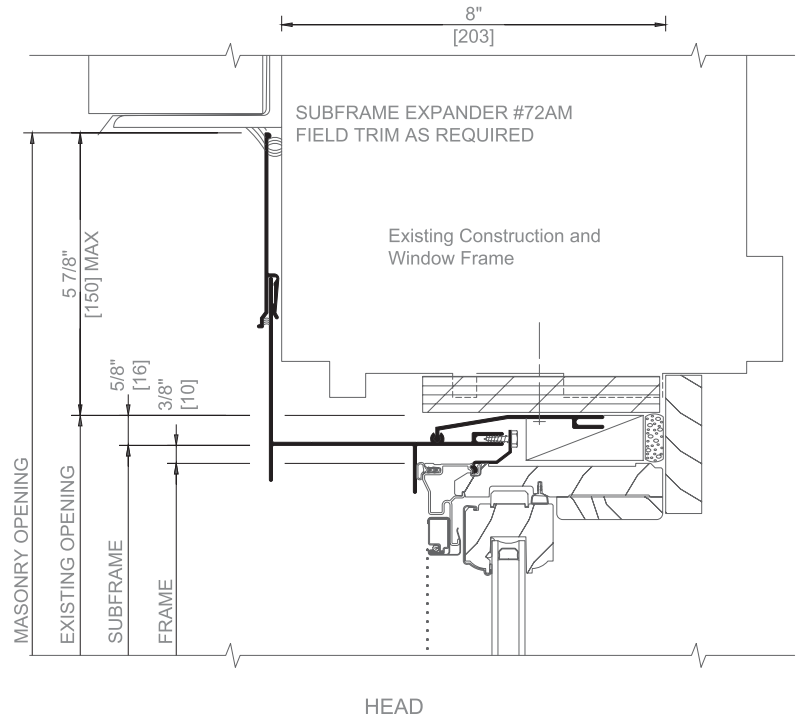
## Installation Accessories

### Receptor and Subframe Systems - Expander and Trim Application

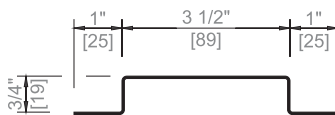
SUBFRAME EXPANDER #72AM



The PELLA® subframe expander may be used at either head or jamb to extend the subframe flange to reach the existing construction. Typically used in curved top openings.

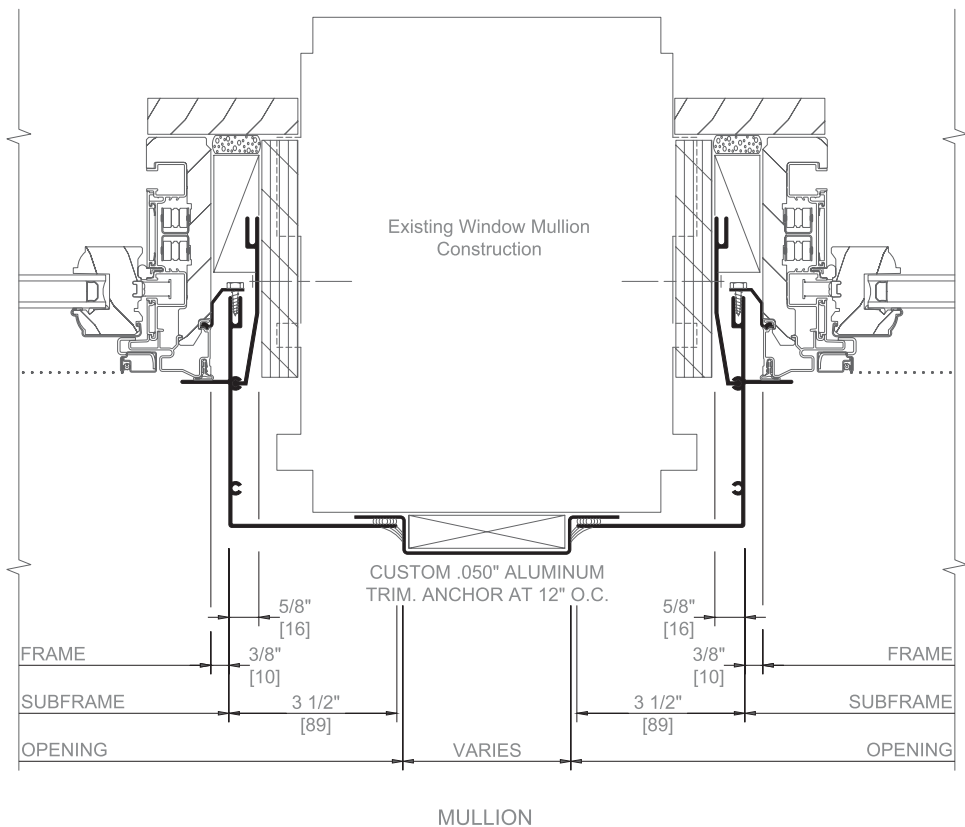


CUSTOM .05\"/>



Custom .05" aluminum parts may be manufactured to enhance transitions between Subframe components. Typically used at mullions.

\*3-1/2" min. for 12' 0" lengths  
2" min. for 8' 0" lengths





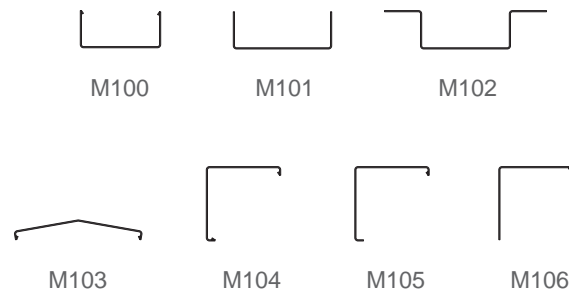
## Installation Accessories

### Break Metal - Covers and Trim

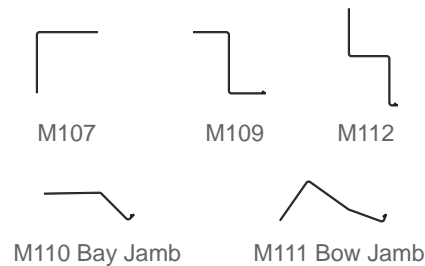
The Pella accessory system includes all of the most-often-specified standard items shown in this Architectural Design Manual as well as other specials shown here.

In addition, completely custom/special installation, panning, and trim systems can be designed and fabricated by Pella for specific project requirements. Shapes shown on the next two pages can be ordered to various dimensions needed. Consult your local Pella sales representative.

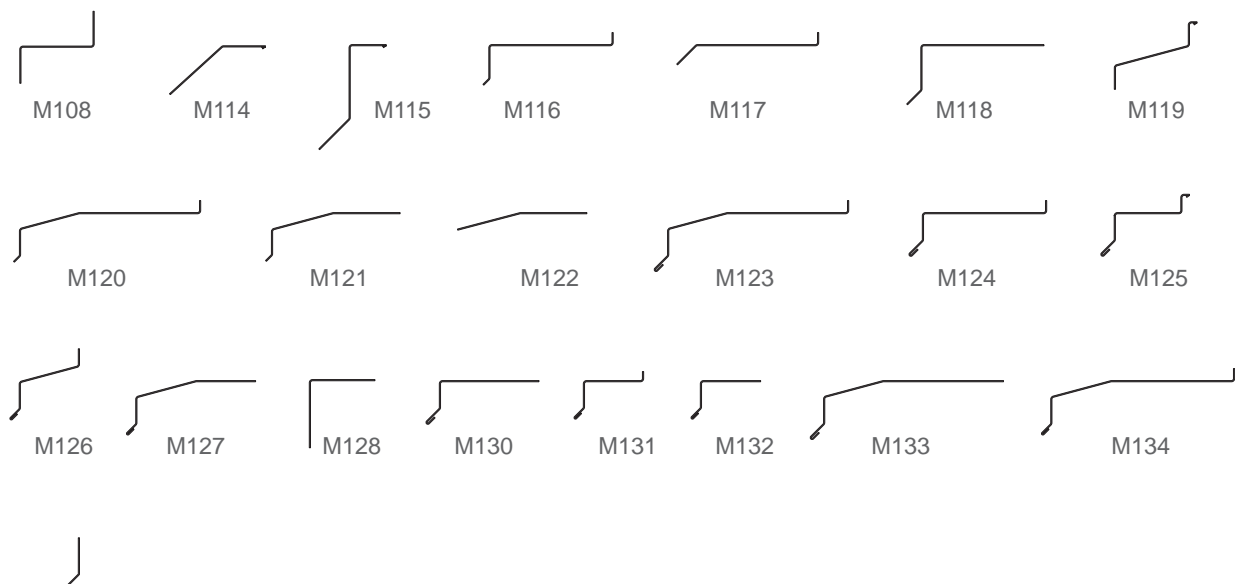
#### Break Metal Mullion Trim



#### Break Metal Head and Jamb Trim



#### Break Metal Sill Trim and Flashing



#### M129 Attachment Clip





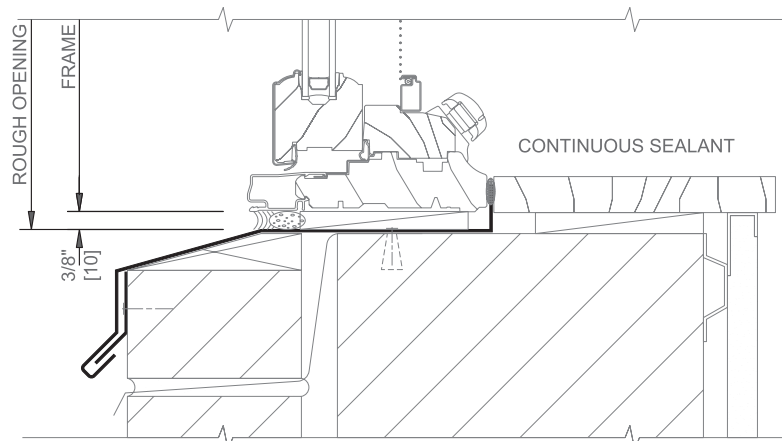
### Brake Metal - Sill Flashing Application

ANCHOR TO OPENING WITH  
STAINLESS STEEL SCREWS  
AND NEOPRENE WASHERS @  
16" [406] O.C. SEAL HEADS

BACKER ROD AND SEALANT  
PROVIDE 3/8" [10] DIA. WEEPS

SHIM AND LEVEL UNITS WITH  
IMPERVIOUS SHIMS

CUSTOM 0.050" [1.27]  
ALUMINUM SILL FLASHING  
#M123 WITH CLIP #M129



NOTE: SEAL ENDS OF 0.050" [1.27] ALUMINUM SILL FLASHING TO  
OPENING WITH A CONTINUOUS BEAD OF SEALANT. APPLY  
SEALANT ALONG FULL LENGTH OF BACK LEG OF SILL FLASHING.  
TIE INTO INTERIOR SEALANT AT JAMBS.

#### Custom Aluminum Sill Flashing

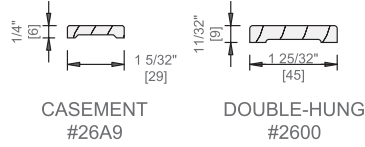
- Custom 0.050" (1.27) aluminum sill flashings can be fabricated to specifications as required. Detail shows typical conditions where custom aluminum sill flashing might be used.
- The use of this sill flashing is recommended only in climates where thermal conductance is not likely to occur.
- Where aluminum comes into contact with cement materials or steel, apply protective coating to separate galvanically incompatible materials.



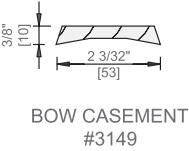
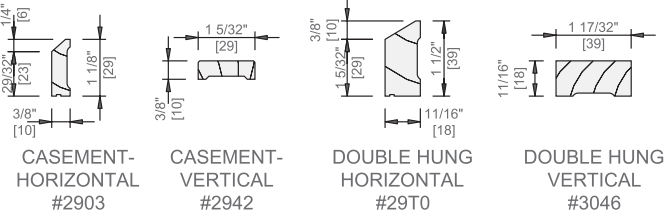
# Installation Accessories

## Wood Exterior Mullion Covers

### Interior



### Exterior



### Interior Mullion Covers

Accessory	Indiv. Part No.	Box No.
Casement Interior	26A9	09GK
Double-Hung Interior	2600	0BMU

### Exterior Mullion Covers

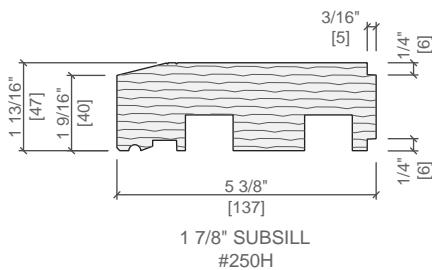
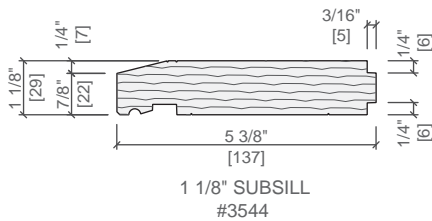
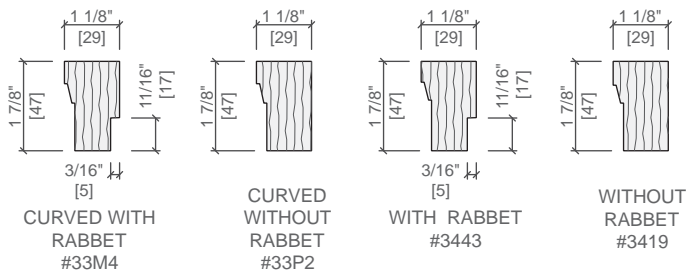
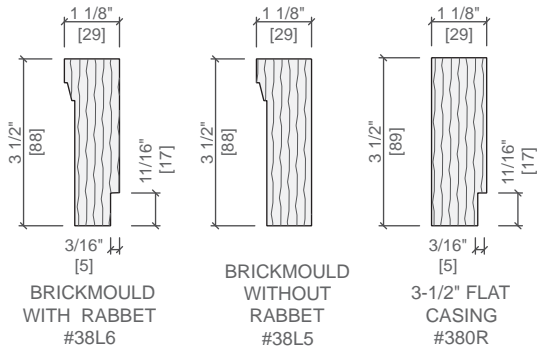
Accessory	Indiv. Part No.	Box No.
Casement Exterior-Horizontal	2903	0B97
Casement Exterior-Vertical	2942	0921
Double-Hung Exterior-Horizontal	29T0	—
Double-Hung Exterior-Vertical	3046	06M2
Bow Casement Exterior	3149	0B44

See the Bay/Bow Section in the Architectural Design Manual for application details.



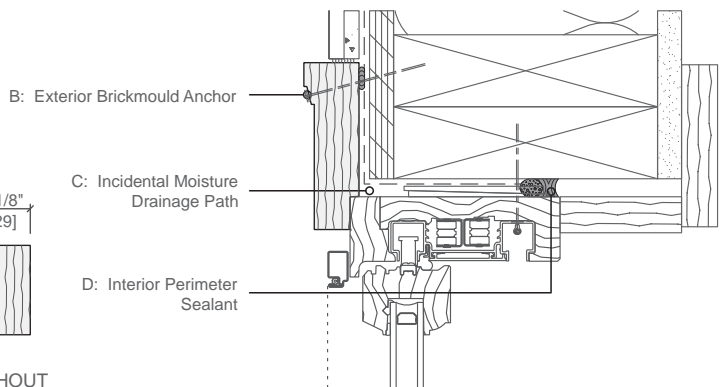
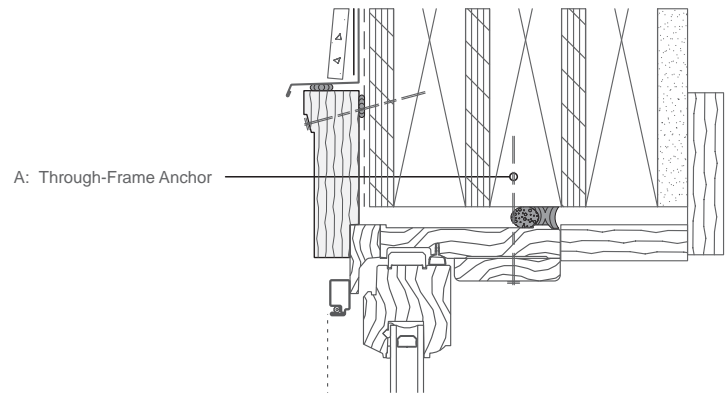
## Installation Accessories

### Wood Exterior Brickmould and Subsill



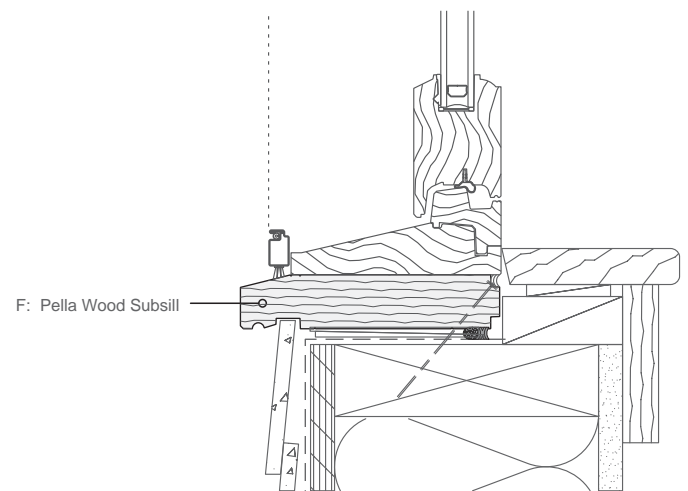
#### Subsills and Exterior Trim

Accessory	Indiv. Part No.	Box No.
3-1/2" with Rabbet	38L6	0F08
3-1/2" without Rabbet	38L5	0F07
3-1/2" Flat Casing with Rabbet	380R	0DAZ
1-7/8" Curved with Rabbet	33M4	—
1-7/8" Curved without Rabbet	33P2	—
1-7/8" with Rabbet	3443	0B96
1-7/8" without Rabbet	3419	0BB0



C: Incidental Moisture Drainage Path

D: Interior Perimeter Sealant



F: Pella Wood Subsill

Accessory	Indiv. Part No.	Box No.
1-1/8" Subsill	3544	0920
1-7/8" Subsill	250H	093H
Double-Hung Sill Nose	3315	0C29
Sill Flashing	—	0D98

Scale 3" = 1' 0"

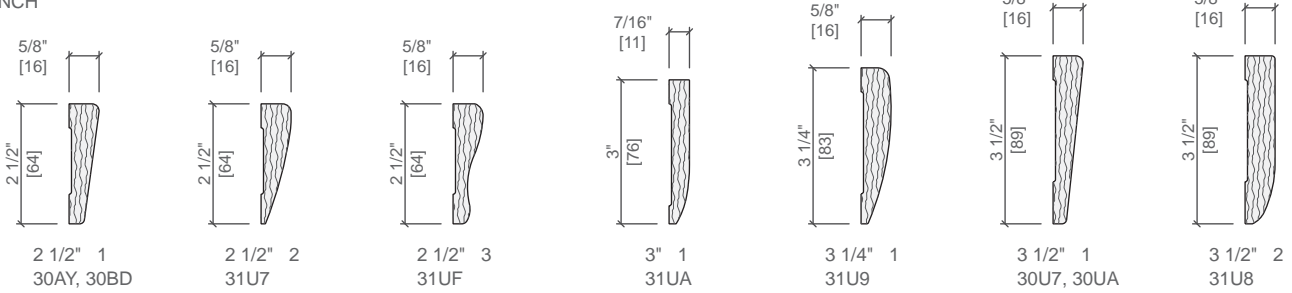




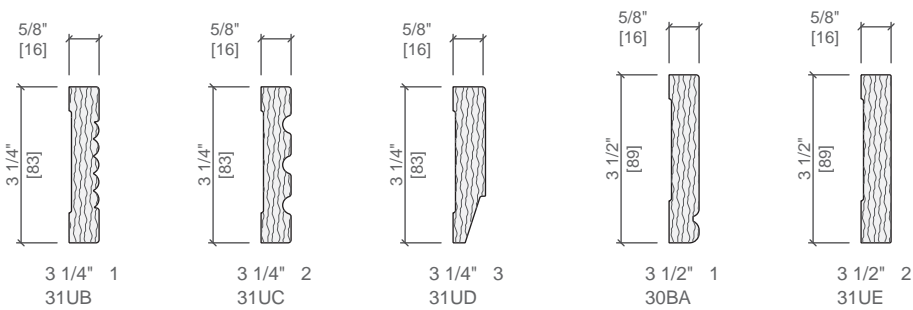
# Installation Accessories

## Interior Trim - Casing

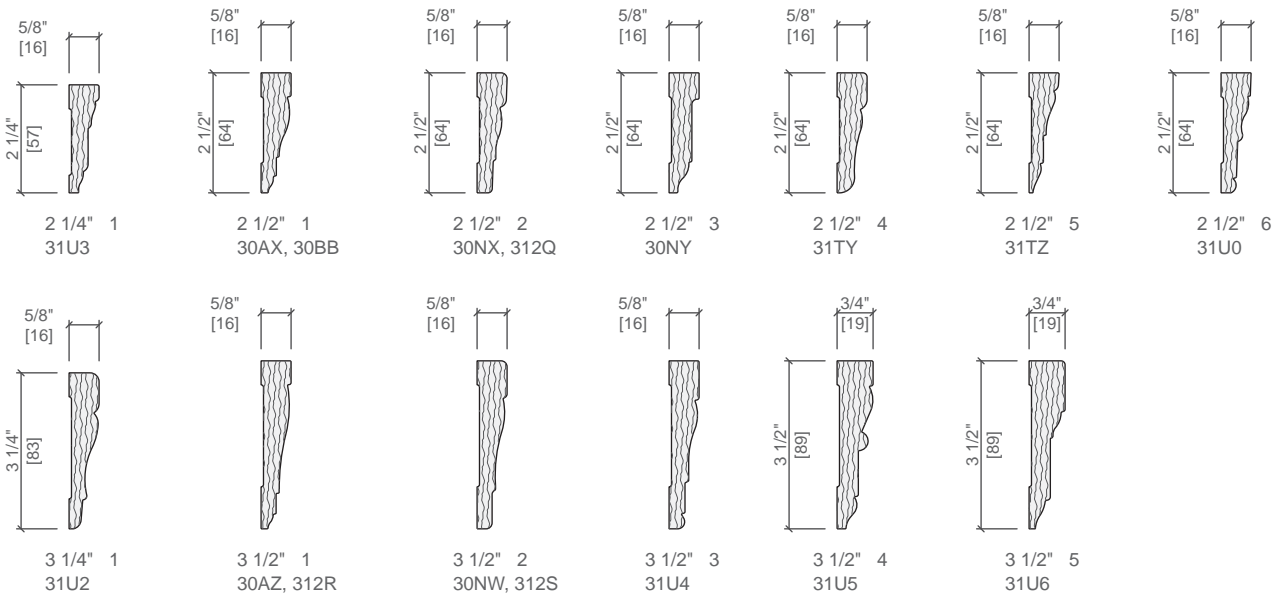
### RANCH



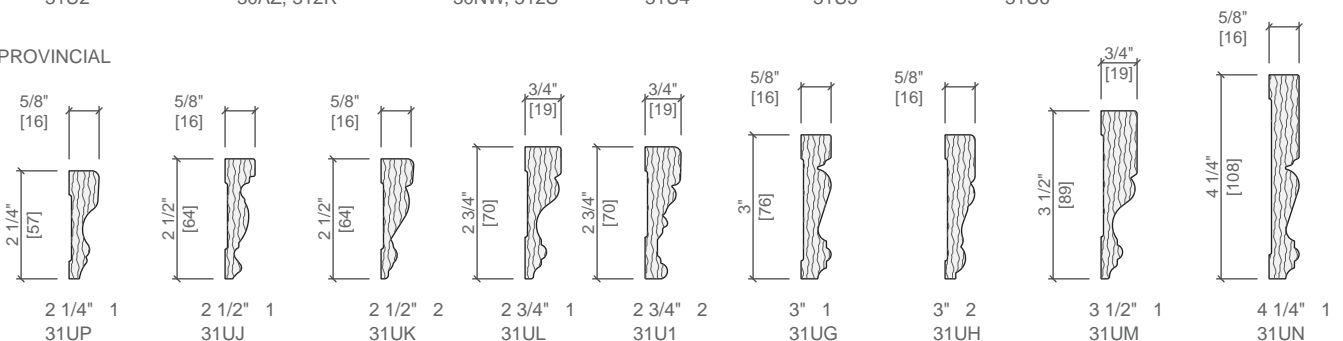
### CRAFTSMAN



### COLONIAL



### PROVINCIAL



Scale 3" = 1' 0"

Rev. 12/09/22

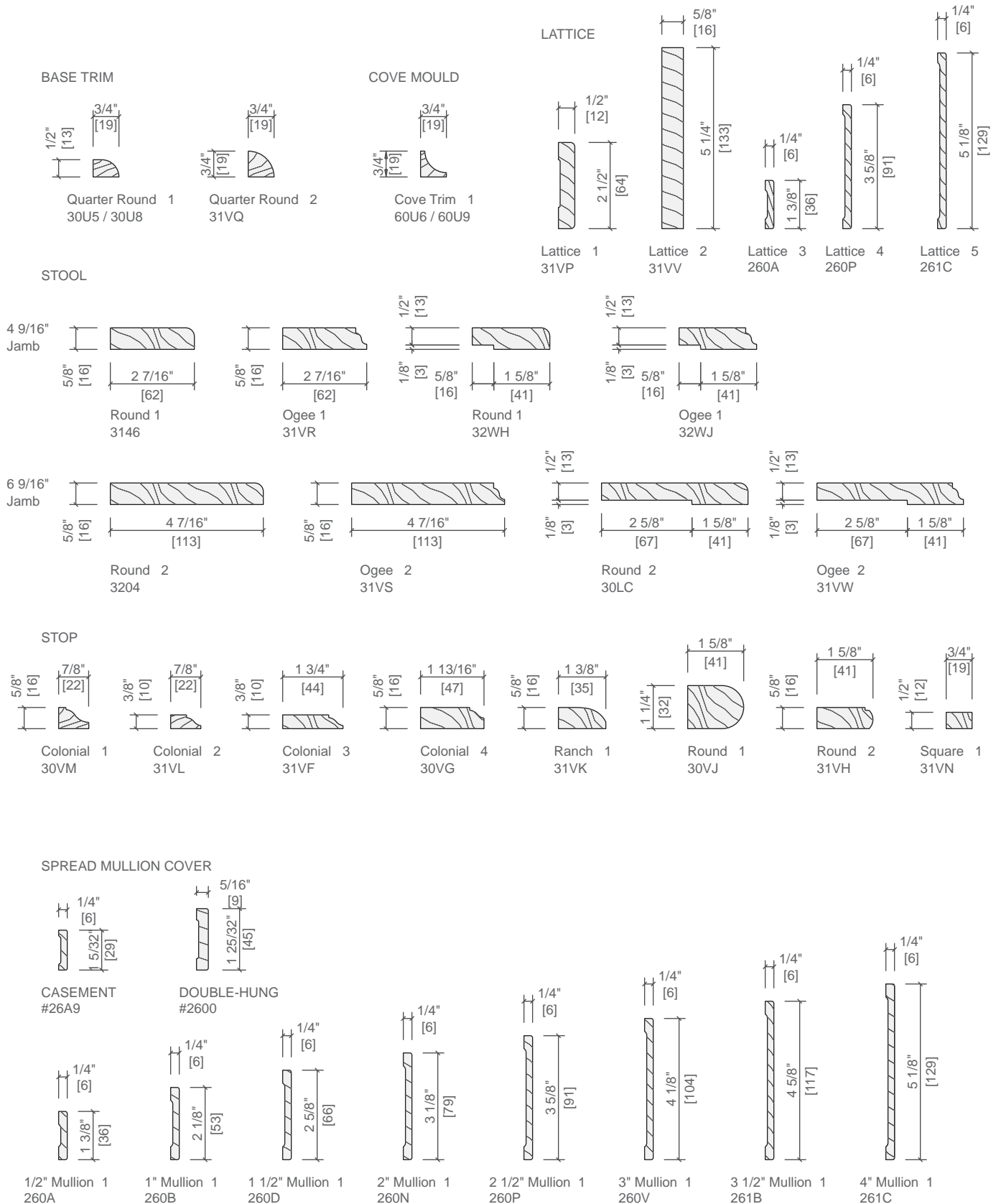
Pella 2025 Architectural Design Manual | Division 08 - Openings | Windows and Doors | [www.Pella.com](http://www.Pella.com)

W-IA-41



## Installation Accessories

### Interior Trim - Accessories

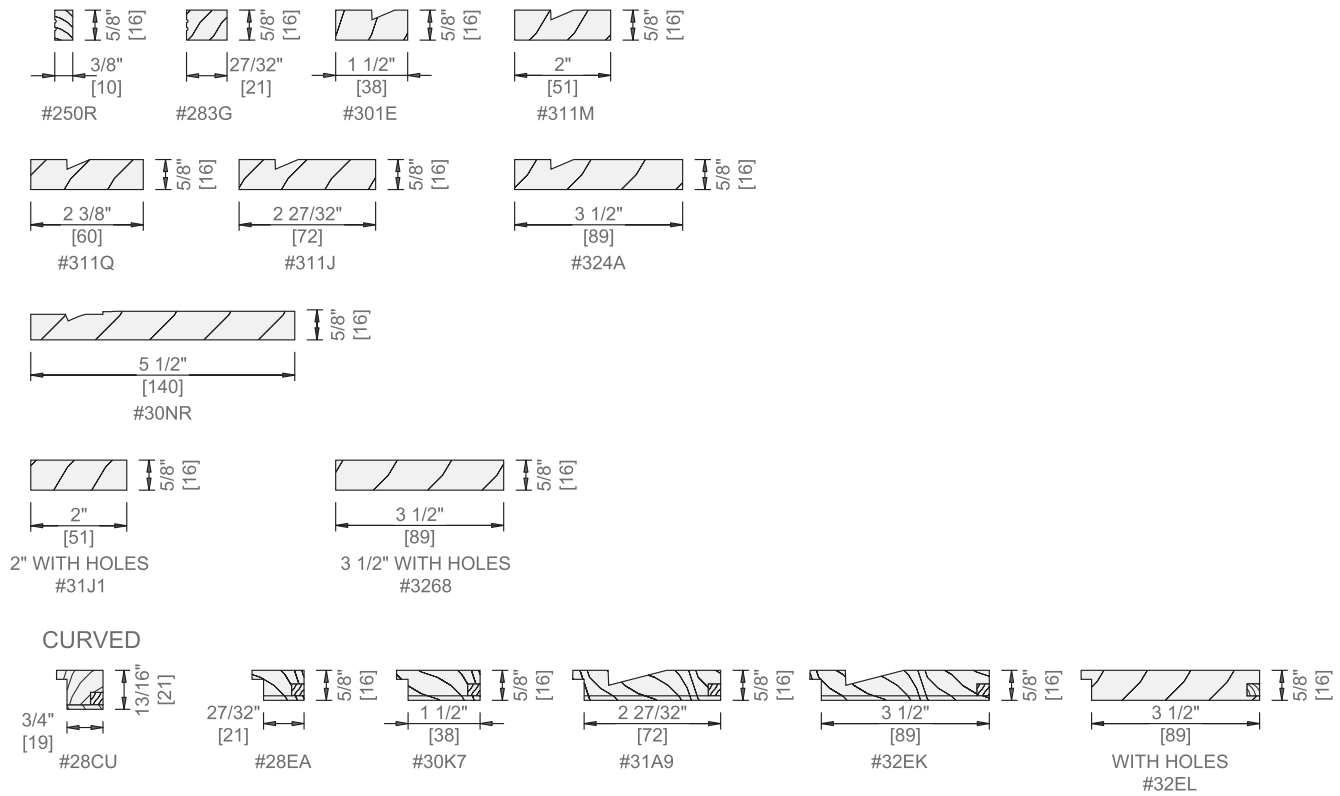


Scale 3" = 1' 0"



## Installation Accessories

### Interior Trim - Jamb Extensions



#### Interior Jamb Extensions

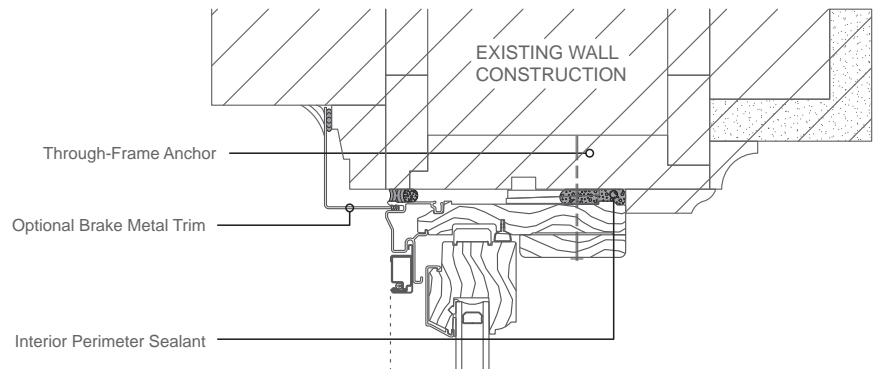
Accessory	Indiv. Part No. (Straight)	Box No. (Straight)	Indiv. Part No. (Curved)	Box No. (Curved)
3/8" Jamb Extension	250R	0654	—	—
3/4" Jamb Extension	—	—	28CU	0BM7
27/32" Jamb Extension	283G	0930	28EA	0BUL
1-1/2" Jamb Extension	301E	0648	30K7	0BUK
2" Jamb Extension with Holes	31J1	—	—	—
2" Jamb Extension	311M	06EN	—	—
2-3/8" Jamb Extension	311Q	06EP	—	—
2-27/32" Jamb Extension	311J	06ER	31A9	0BUJ
3-1/2" Jamb Extension	324A	06ET	32EK	0BUH
3-1/2" Jamb Extension with Holes	3268	0C83	32EL	0BM6
5-1/2" Jamb Extension	30NR	00YX	—	—



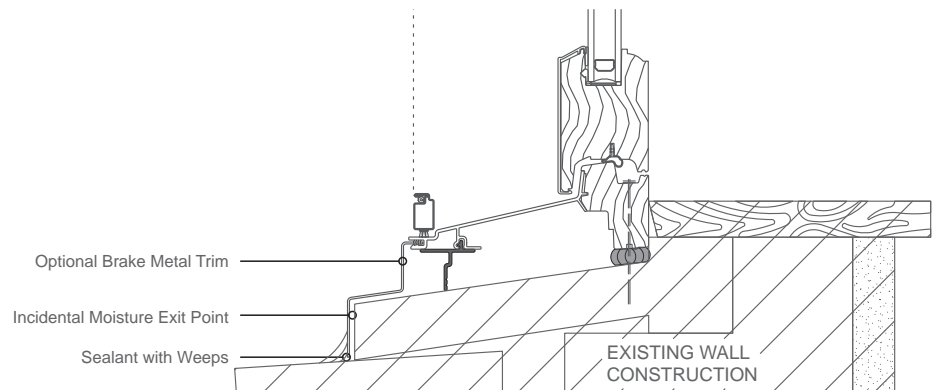
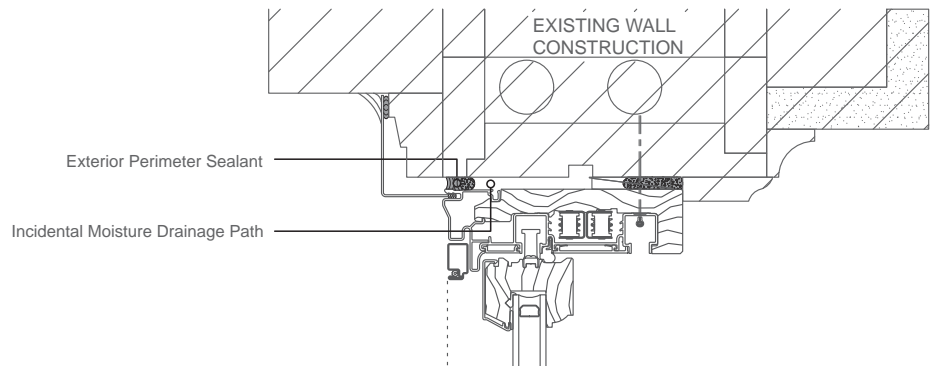
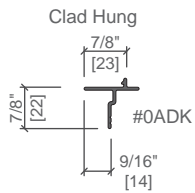
## Installation Accessories

### Renovation – Exterior Pocket Installation

- Fully assembled standard double-hung window
- Slides easily into existing pocket from the exterior
- Trim, wall coverings, paint and plaster are usually not disturbed
- Eliminates cost and inconvenience of a complete tear-out
- Installs from the exterior



#### REPLACEMENT SILL ADAPTOR





## Installation Accessories

### Renovation — Precision Fit® Interior Pocket Installation

- Fully assembled Precision Fit® double-hung, awning or casement window
- Slides easily into existing pocket from the interior
- Trim, wall coverings, paint and plaster are usually not disturbed
- Eliminates cost and inconvenience of a complete tear-out
- Installs from the interior

