



Angle Jamb W-BB-1

 Clad Casement Bay Windows

 Size Tables..... W-BB-1

 Installation Details..... W-BB-3

 Clad Double-Hung Bay Windows

 Size Tables..... W-BB-5

 Installation Details..... W-BB-6

 Clad Casement Bow Windows

 Size Tables..... W-BB-8

 Installation Details..... W-BB-9

Square Jamb..... W-BB-11

 Clad Casement Bay Windows

 Size Tables..... W-BB-11

 Installation Details..... W-BB-12

 Clad Double-Hung Bay Windows

 Size Tables..... W-BB-14

 Installation Details..... W-BB-15

 Clad Casement Bow Windows

 Size Tables..... W-BB-17

 Installation Details..... W-BB-18

 Wood Exterior Bay and Bow Windows

 Installation Details For Field Mullion Assembly - Casement Bay W-BB-20

 Installation Details For Field Mullion Assembly - Double-Hung Bay..... W-BB-22

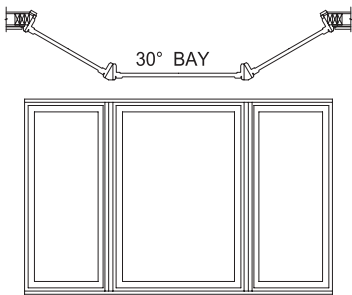
 Installation Details For Field Mullion Assembly - Casement Bow W-BB-25

The information published in this document is believed to be accurate at the time of publication. However, because we are constantly working to improve our products, specifications are subject to change without notice. Consult your local Pella representative for up-to-date product information.

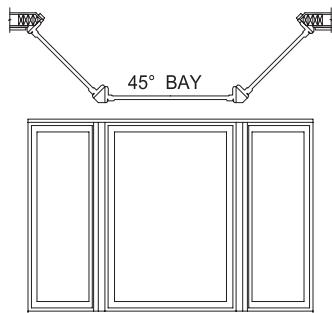


Clad-Wood Bay/Bow Windows

Size Tables - Casement Bay / Angle Jamb



30 Degree Bay - 41" Center Unit				
Flanker Frame Width Inches (mm)	A R.O. Width Inches (mm)	B M.O. Width Inches (mm)	C Overall Projection Inches (mm)	D Overall Unit Width Inches (mm)
17 (432)	75-3/16 (1 909)	79-7/16 (2 018)	10-9/16 (268)	75-7/16 (1 916)
21 (533)	82-1/8 (2 085)	86-3/8 (2 194)	12-9/16 (319)	82-3/8 (2 092)
23 (584)	85-9/16 (2 173)	89-13/16 (2 282)	13-9/16 (345)	85-13/16 (2 180)
25 (635)	89 (2 261)	93-5/16 (2 370)	14-9/16 (370)	89-5/16 (2 268)
29 (737)	95-15/16 (2 437)	100-1/4 (2 546)	16-9/16 (421)	96-1/4 (2 444)
35 (889)	106-3/8 (2 701)	110-5/8 (2 810)	19-9/16 (497)	106-5/8 (2 708)



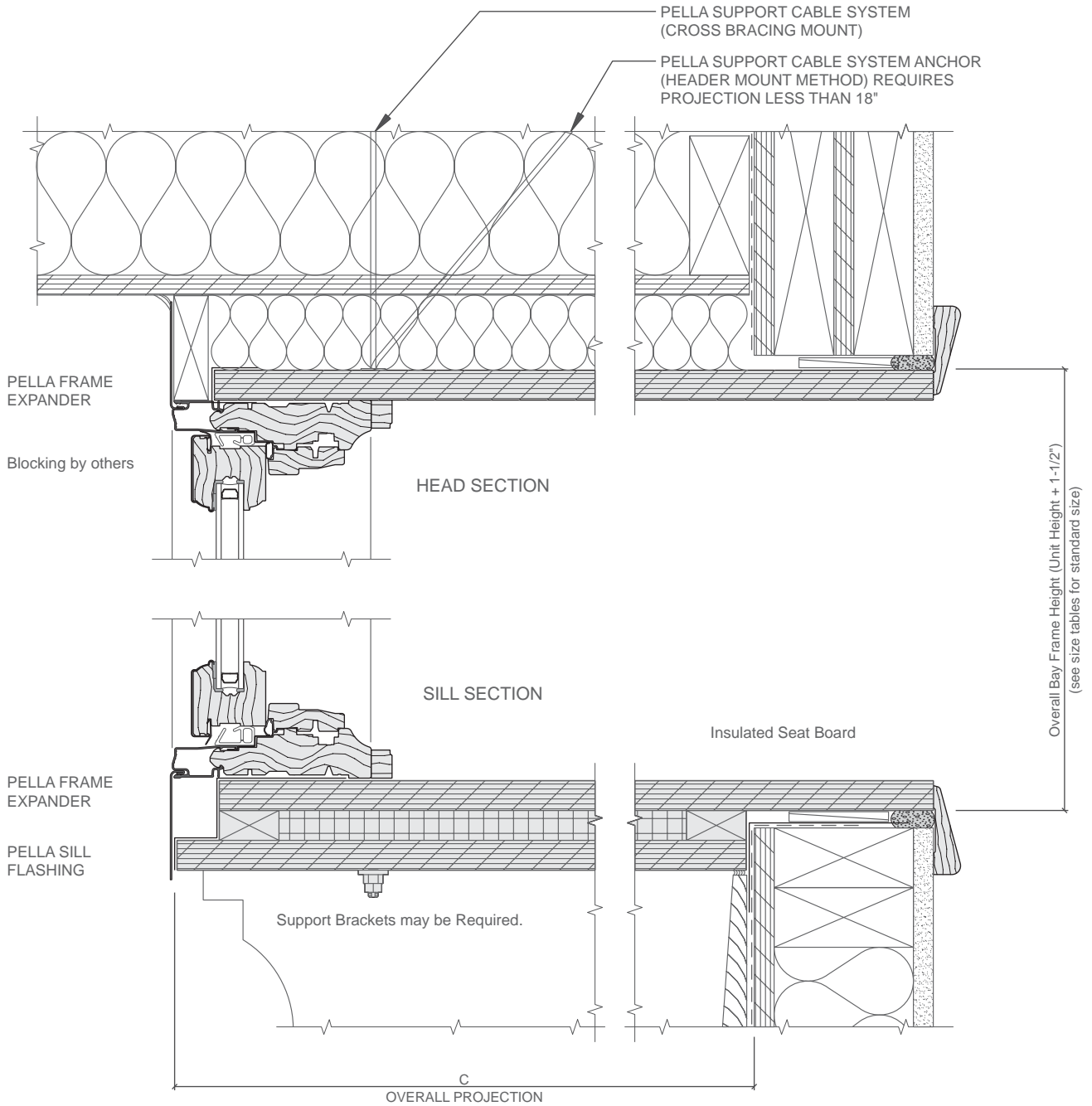
45 Degree Bay - 41" Center Unit				
Flanker Frame Width Inches (mm)	A R.O. Width Inches (mm)	B M.O. Width Inches (mm)	C Overall Projection Inches (mm)	D Overall Unit Width Inches (mm)
17 (432)	71-7/16 (1 814)	76-1/8 (1 933)	14-15/16 (379)	72-1/8 (1 832)
21 (533)	77-1/16 (1 958)	81-3/4 (2 077)	17-3/4 (451)	77-3/4 (1 975)
23 (584)	79-15/16 (2 030)	84-5/8 (2 149)	19-3/16 (487)	80-5/8 (2 047)
25 (635)	82-3/4 (2 102)	87-7/16 (2 221)	20-5/8 (524)	83-7/16 (2 119)
29 (737)	88-3/8 (2 245)	93-1/16 (2 364)	23-7/16 (595)	89-1/16 (2 263)
35 (889)	96-7/8 (2 461)	101-9/16 (2 580)	27-11/16 (703)	97-9/16 (2 478)

- Bay window combinations are not AAMA/WDMA performance rated.
- For center unit frame width other than those shown:
 - > 41": Add difference between 41" and greater frame width to dimensions A, B and D.
 - < 41": Subtract difference between 41" and smaller frame width from dimensions A, B and D.
- Dimensioning points are shown in details.
- Overall projection (C dimension) is sheathing to face of bay. For sheathing to sheathing (walk-in bay) subtract 1-1/4".
- Specify height of window units to be used in bay.
- Max factory assembled combination width must be less than 144".



Clad-Wood Bay/Bow Windows

Installation Details - Casement Bay / Angle Jamb



(1) The Bay/Bow support cables must be attached to structural members capable of supporting 1,300 lbs. Knee braces are required in addition to the support cables if the structural members are not capable of supporting 1,300 lbs. Bay/Bow units are not designed to support roof structure.

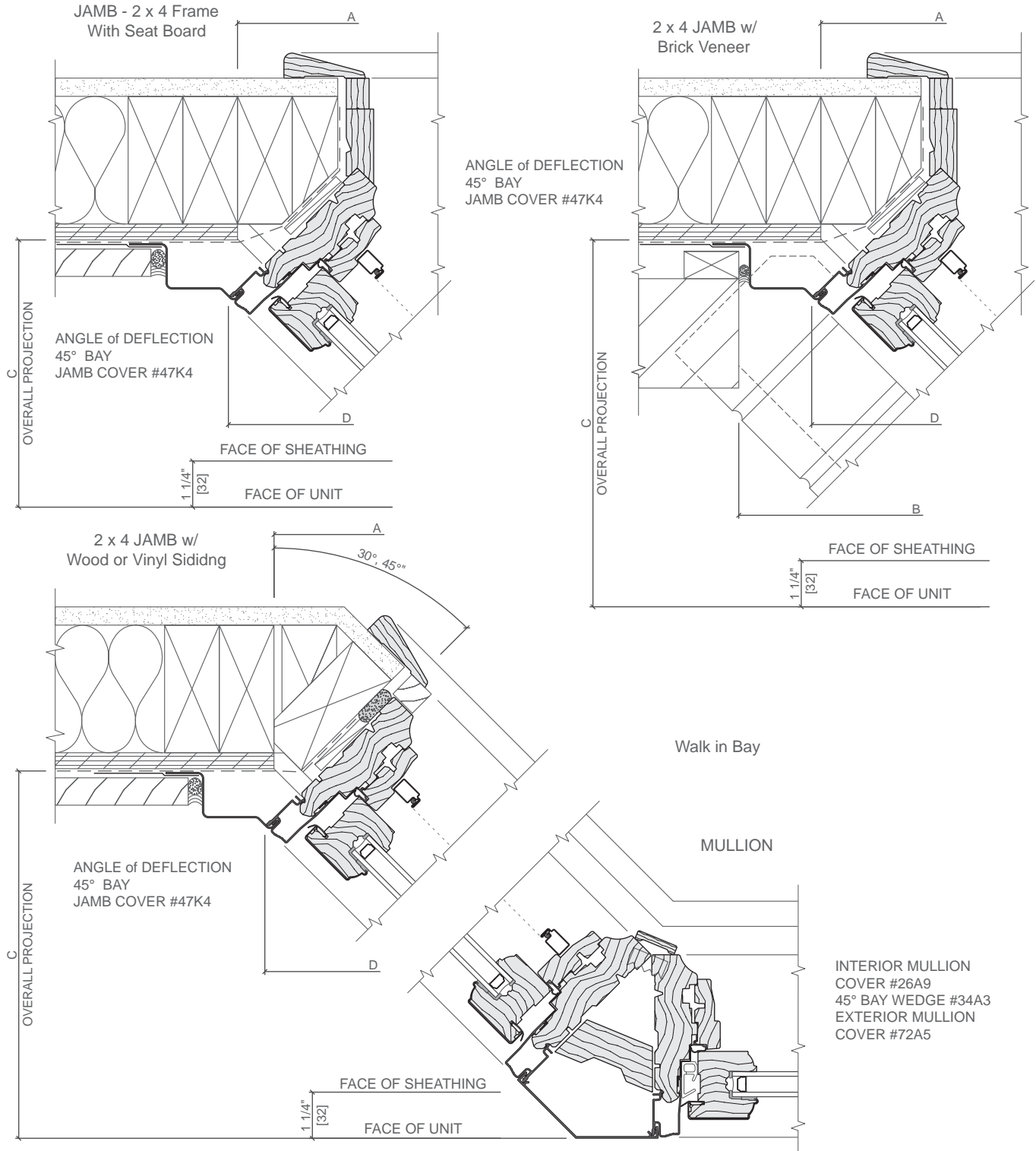
Head board and insulated seat board are included standard. Variance required to order without head and seat board



Clad-Wood Bay/Bow Windows

Installation Details - Casement Bay / Angle Jamb

45° bay details shown; 30° are similar.
Standard jamb and mullion covers are available
for 30° and 45° bays.



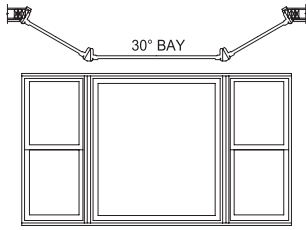
Scale 3" = 1' 0"

Walk in Bay units are field assembly only, available through variance process.

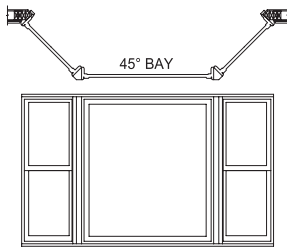


Clad-Wood Bay/Bow Windows

Size Tables - Double-Hung Bay / Angle Jamb



30 Degree Bay - 53" Center Unit				
Flanker Frame Width Inches (mm)	A R.O. Width Inches (mm)	B M.O. Width Inches (mm)	C Overall Projection Inches (mm)	D Overall Unit Width Inches (mm)
Factory Assembled				
21 (533)	94-1/8 (2 391)	98-3/8 (2 499)	12-9/16 (319)	94-3/8 (2 397)
25 (635)	101 (2 565)	105-5/16 (2 675)	14-9/16 (370)	101-5/16 (2 573)
29 (737)	108 (2 743)	112-1/4 (2 851)	16-9/16 (421)	108-1/4 (2 750)
Non-Factory Assembled				
33 (838)	114-7/8 (2 918)	119-3/16 (3 027)	18-9/16 (472)	115-3/16 (2 926)
37 (940)	121-7/8 (3 096)	126-1/16 (3 202)	20-9/16 (522)	122-1/16 (3 100)
41 (1 041)	128-3/4 (3 270)	133 (3 378)	22-9/16 (573)	129 (3 277)
45 (1 143) ₁	135-5/8 (3 445)	139-15/16 (3 554)	24-9/16 (624)	135-15/16 (3 453)



45 Degree Bay - 53" Center Unit				
Flanker Frame Width Inches (mm)	A R.O. Width Inches (mm)	B M.O. Width Inches (mm)	C Overall Projection Inches (mm)	D Overall Unit Width Inches (mm)
Factory Assembled				
21 (533)	89-1/8 (2 264)	93-3/4 (2 381)	17-3/4 (451)	89-3/4 (2 280)
25 (635)	94-3/4 (2 407)	99-7/16 (2 526)	20-5/8 (524)	95-7/16 (2 424)
29 (737)	100-3/8 (2 550)	105-1/16 (2 669)	23-7/16 (595)	101-1/16 (2 567)
Non-Factory Assembled				
33 (838)	106 (2 692)	110-3/4 (2 813)	26-1/4 (667)	106-3/4 (2 711)
37 (940)	111-3/4 (2 838)	116-3/8 (2 956)	29-1/16 (738)	112-3/8 (2 854)
41 (1 041)	117-3/8 (2 981)	122-1/16 (3 100)	31-15/16 (811)	118-1/16 (2 999)

(1) Available in Architect Series and Designer Series Only.

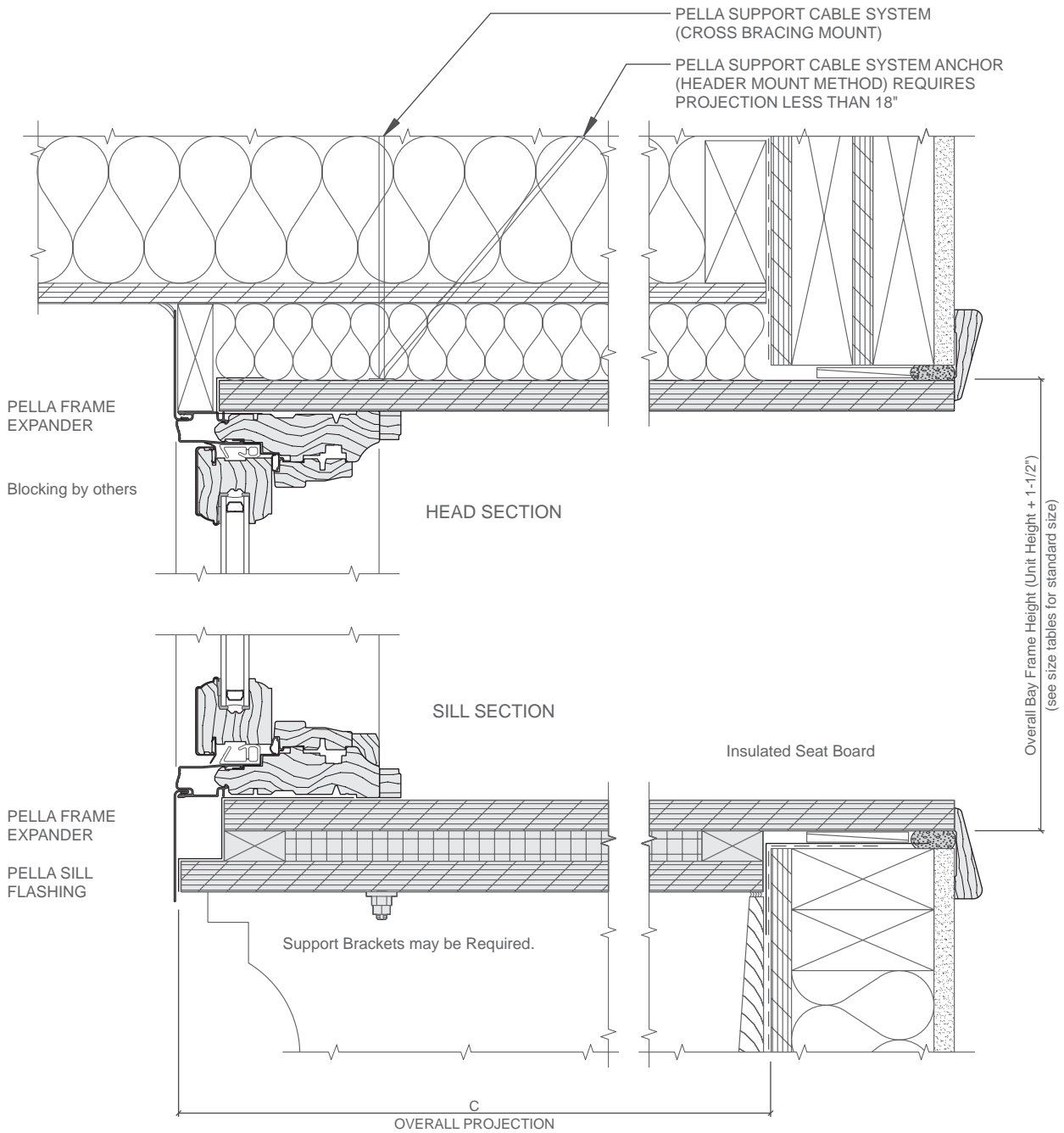
- Bay window combinations are not AAMA/WDMA performance rated.
- For center unit frame width other than those shown:
 - > 53": Add difference between 53" and greater frame width to dimensions A, B and D.
 - < 53" Fixed Unit: Subtract difference between 53" and smaller frame width from dimensions A, B and D.

- Dimensioning points are shown in details.
 - Overall projection (C dimension) is sheathing to face of bay. For sheathing to sheathing (walk-in bay) subtract 1-1/4".
 - Specify height of window units to be used in bay.
- Max factory assembled combination width must be less than 144".



Clad-Wood Bay/Bow Windows

Installation Details - Double-Hung Bay / Angle Jamb



(1) The Bay/Bow support cables must be attached to structural members capable of supporting 1,300 lbs. Knee braces are required in addition to the support cables if the structural members are not capable of supporting 1,300 lbs. Bay/Bow units are not designed to support roof structure.

Head board and insulated seat board are included standard. Variance required to order without head and seat board

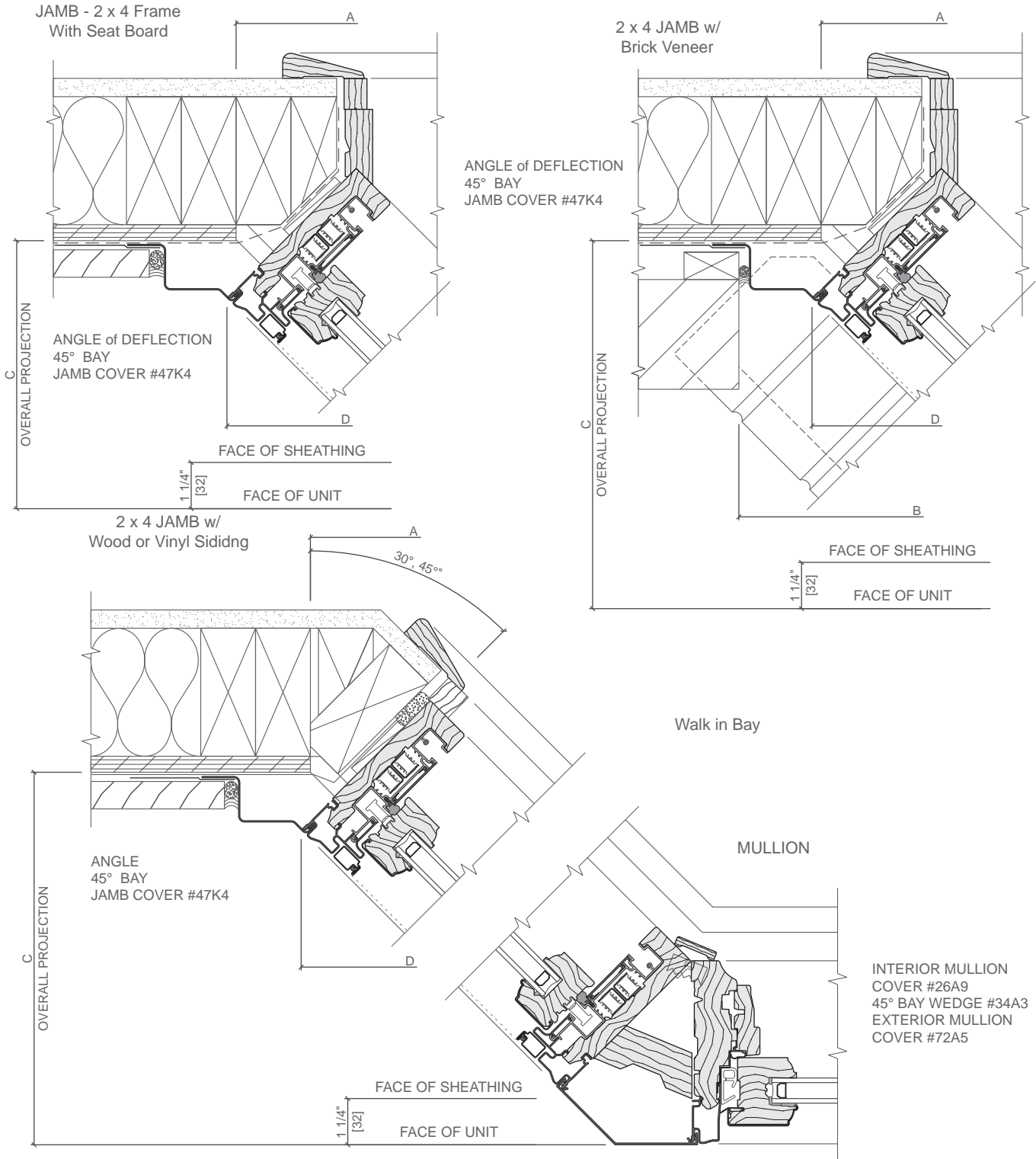
Scale 3" = 1' 0"



Clad-Wood Bay/Bow Windows

Installation Details - Double-Hung Bay / Angle Jamb

45° bay details shown; 30° are similar.
Standard jamb and mullion covers are available
for 30° and 45° bays.



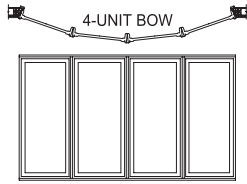
Scale 3" = 1' 0"

Walk in Bay units are field assembly only, available through variance process.

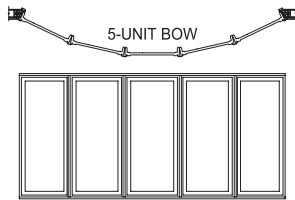


Clad-Wood Bay/Bow Windows

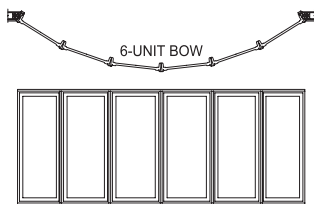
Size Tables - Casement Bow / Angle Jamb



4-Unit					
Flanker Frame Width Inches (mm)	Radius	A	B	C	D
		R.O. Width Inches (mm)	M.O. Width Inches (mm)	Overall Projection Inches (mm)	Overall Unit Width Inches (mm)
17 (432)	76-1/16 (1 932)	69-1/8 (1 755)	73-3/16 (1 859)	9-1/16 (230)	69-3/16 (1 757)
21 (533)	94 (2 387)	84-5/8 (2 149)	88-11/16 (2 253)	10-13/16 (275)	84-11/16 (2 151)
23 (584)	102-15/16 (2 614)	92-3/8 (2 346)	96-7/16 (2 450)	11-11/16 (297)	92-7/16 (2 348)
25 (635)	111-7/8 (2 842)	100-1/8 (2 543)	104-3/16 (2 647)	12-9/16 (319)	100-3/16 (2 545)
29 (737)	129-3/4 (3 296)	115-5/8 (2 937)	119-11/16 (3 041)	14-5/16 (364)	115-11/16 (2 939)
35 (889)	156-5/8 (3 978)	138-7/8 (3 528)	143 (3 632)	16-15/16 (430)	139 (3 530)



5-Unit					
Flanker Frame Width Inches (mm)	Radius	A	B	C	D
		R.O. Width Inches (mm)	M.O. Width Inches (mm)	Overall Projection Inches (mm)	Overall Unit Width Inches (mm)
17 (432)	76-1/16 (1 932)	85 (2 156)	89-1/8 (2 265)	12-15/16 (329)	85-1/8 (2 163)
21 (533)	94 (2 387)	104 (2 642)	108-3/16 (2 748)	15-1/2 (394)	104-3/16 (2 646)
23 (584)	102-15/16 (2 615)	113-1/4 (2 883)	117-11/16 (2 989)	16-3/16 (427)	113-11/16 (2 888)
25 (635)	111-7/8 (2 842)	123 (3 125)	127-3/16 (3 231)	18-1/8 (460)	123-3/16 (3 129)
29 (737)	129-13/16 (3 297)	142-1/16 (3 608)	146-1/4 (3 714)	20-3/4 (527)	142-1/4 (3 613)
35 (889)*	126-5/8 (3 978)	170-9/16 (4 333)	174-3/4 (4 439)	24-5/8 (626)	170-3/4 (4 337)



6-Unit					
Flanker Frame Width Inches (mm)	Radius	A	B	C	D
		R.O. Width Inches (mm)	M.O. Width Inches (mm)	Overall Projection Inches (mm)	Overall Unit Width Inches (mm)
17 (432)	76-1/16 (1 932)	99-7/8 (2 537)	104-1/8 (2 645)	17-3/8 (441)	100-1/8 (2 543)
21 (533)	93 (2 362)	122-1/16 (3 100)	126-3/8 (3 210)	21-1/4 (540)	122-3/8 (3 108)
23 (584)	102-15/16 (2 615)	133-3/16 (3 383)	137-1/2 (3 493)	23-1/8 (587)	133-1/2 (3 391)
25 (635)*	111-7/8 (2 842)	144-3/8 (3 667)	148-5/8 (3 775)	25-1/8 (638)	144-5/8 (3 673)
29 (737)*	129-3/4 (3 296)	166-15/16 (4 240)	171 (4 343)	29 (737)	167 (4 242)
35 (889)*	156-3/8 (3 972)	200-1/8 (5 083)	204-3/8 (5 191)	34-3/4 (883)	200-3/8 (5 090)

* Not Factory Assembled

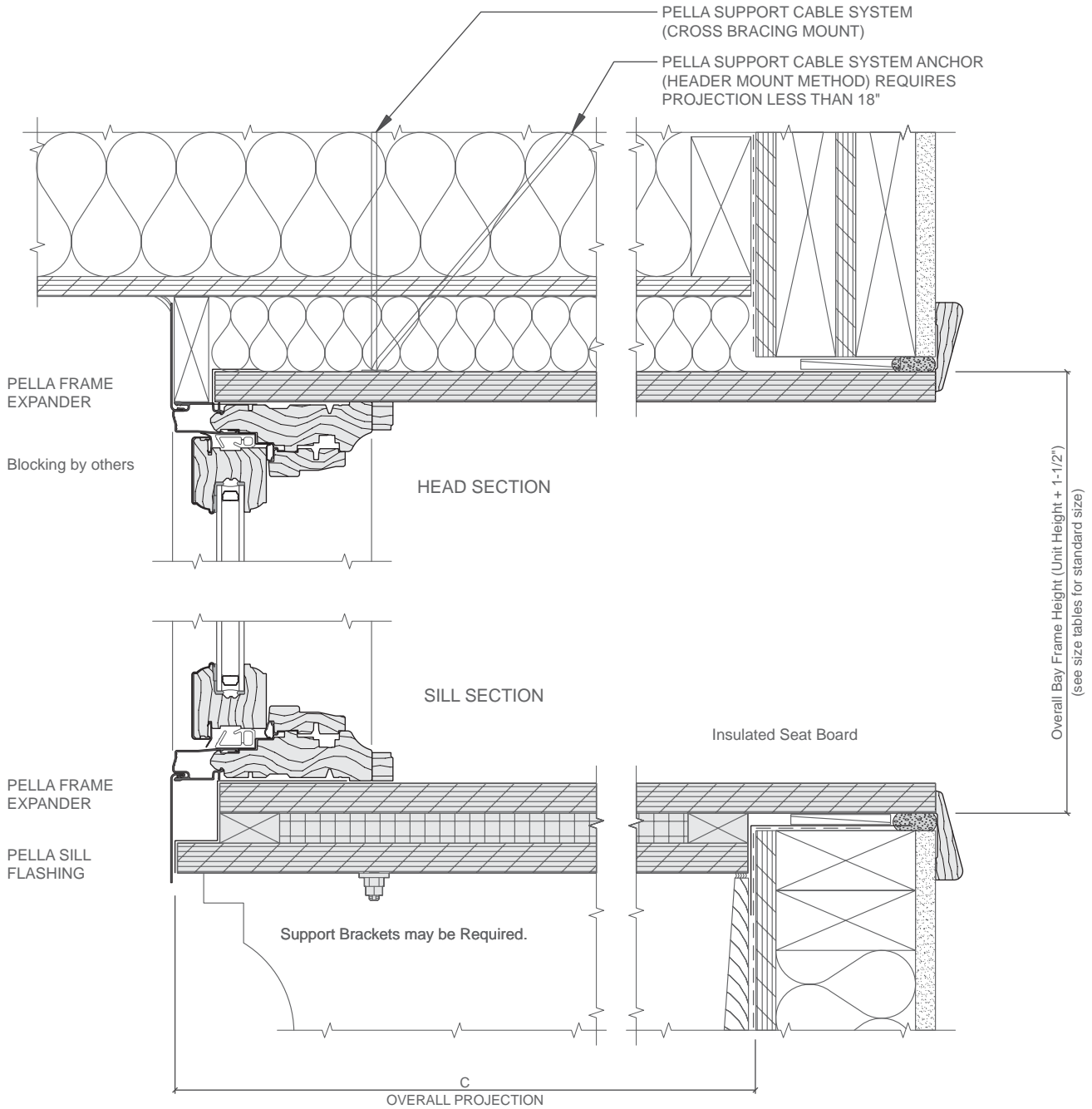
- Bow window combinations are not AAMA/WDMA performance rated.
- Dimensioning points are shown in details.
- Overall projection (C dimension) is sheathing to face of bow. For sheathing to sheathing (walk-in bow) subtract 1-1/4".
- Specify height of window units to be used in bow.

Max factory assembled combination width must be less than 144".



Clad-Wood Bay/Bow Windows

Installation Details - Casement Bow / Angle Jamb



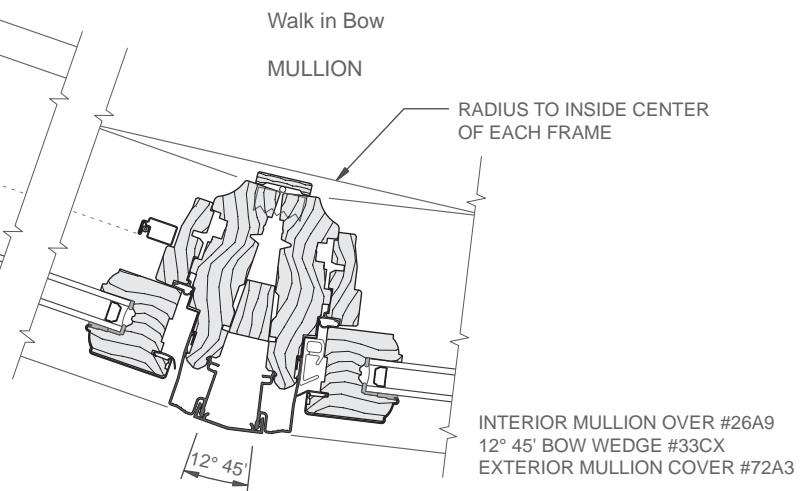
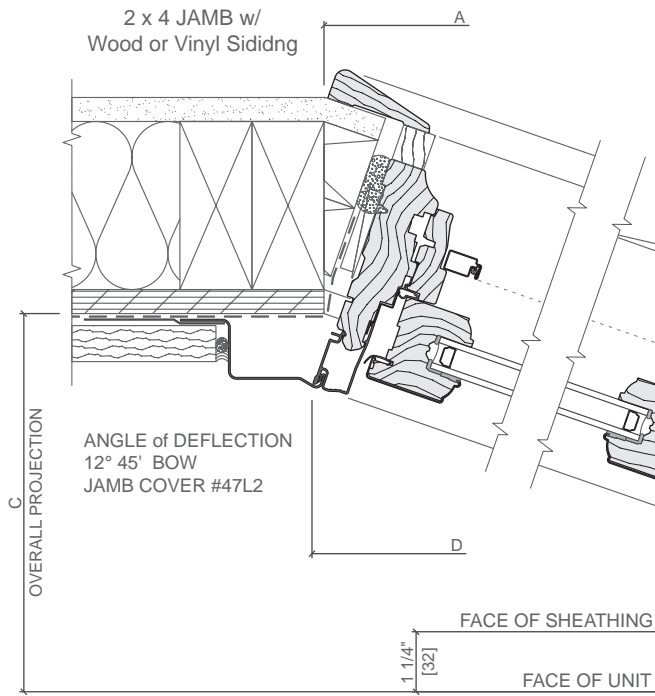
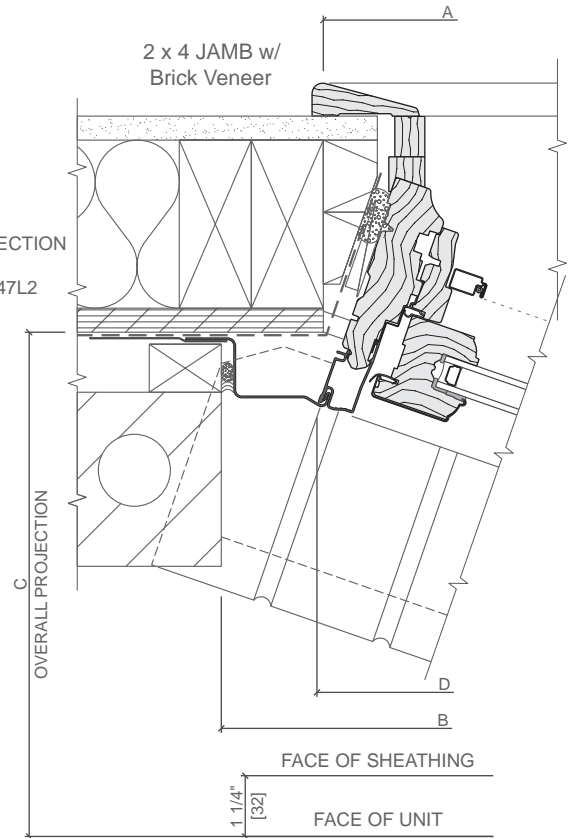
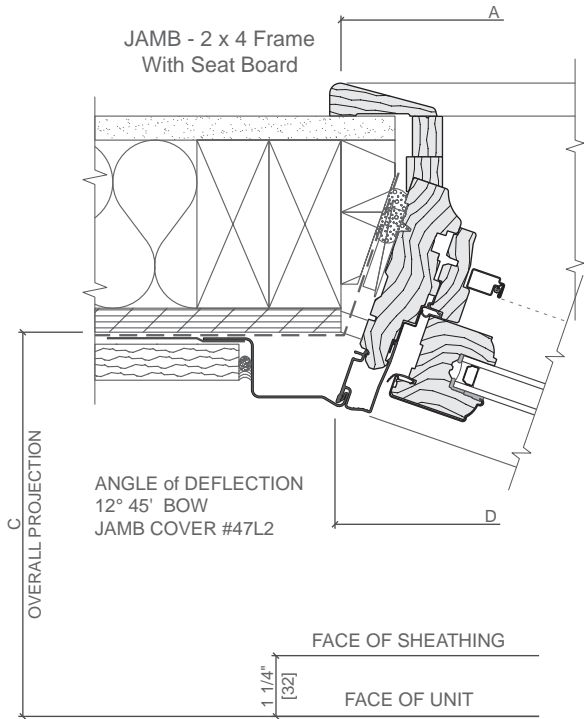
(1) The Bay/Bow support cables must be attached to structural members capable of supporting 1,300 lbs. Knee braces are required in addition to the support cables if the structural members are not capable of supporting 1,300 lbs. Bay/Bow units are not designed to support roof structure.

Head board and insulated seat board are included standard. Variance required to order without head and seat board



Clad-Wood Bay/Bow Windows

Installation Details - Casement Bow / Angle Jamb



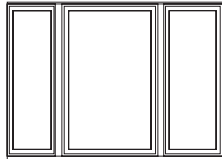
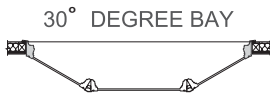
Scale 3" = 1' 0"

Walk in Bow units are field assembly only, available through variance process.



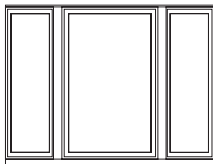
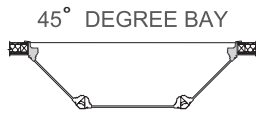
Clad-Wood Bay/Bow Windows

Size Tables - Casement Bay / Square Jamb



30 Degree Bay - 41" Center Unit

Flanker Frame Width Inches (mm)	A R.O. Width Inches (mm)	C Overall Projection Inches (mm)	D Overall Unit Width Inches (mm)
17 (432)	76-3/16 (1 935)	10-5/8 (270)	75-7/16 (1 916)
21 (533)	83-1/8 (2 111)	12-5/8 (321)	82-3/8 (2 092)
23 (584)	86-9/16 (2 199)	13-5/8 (346)	85-13/16 (2 180)
25 (635)	90-1/16 (2 287)	14-5/8 (372)	89-5/16 (2 268)
29 (737)	97 (2 464)	16-5/8 (423)	96-1/4 (2 444)
35 (889)	107-3/8 (2 727)	19-5/8 (499)	106-5/8 (2 708)



45 Degree Bay - 41" Center Unit

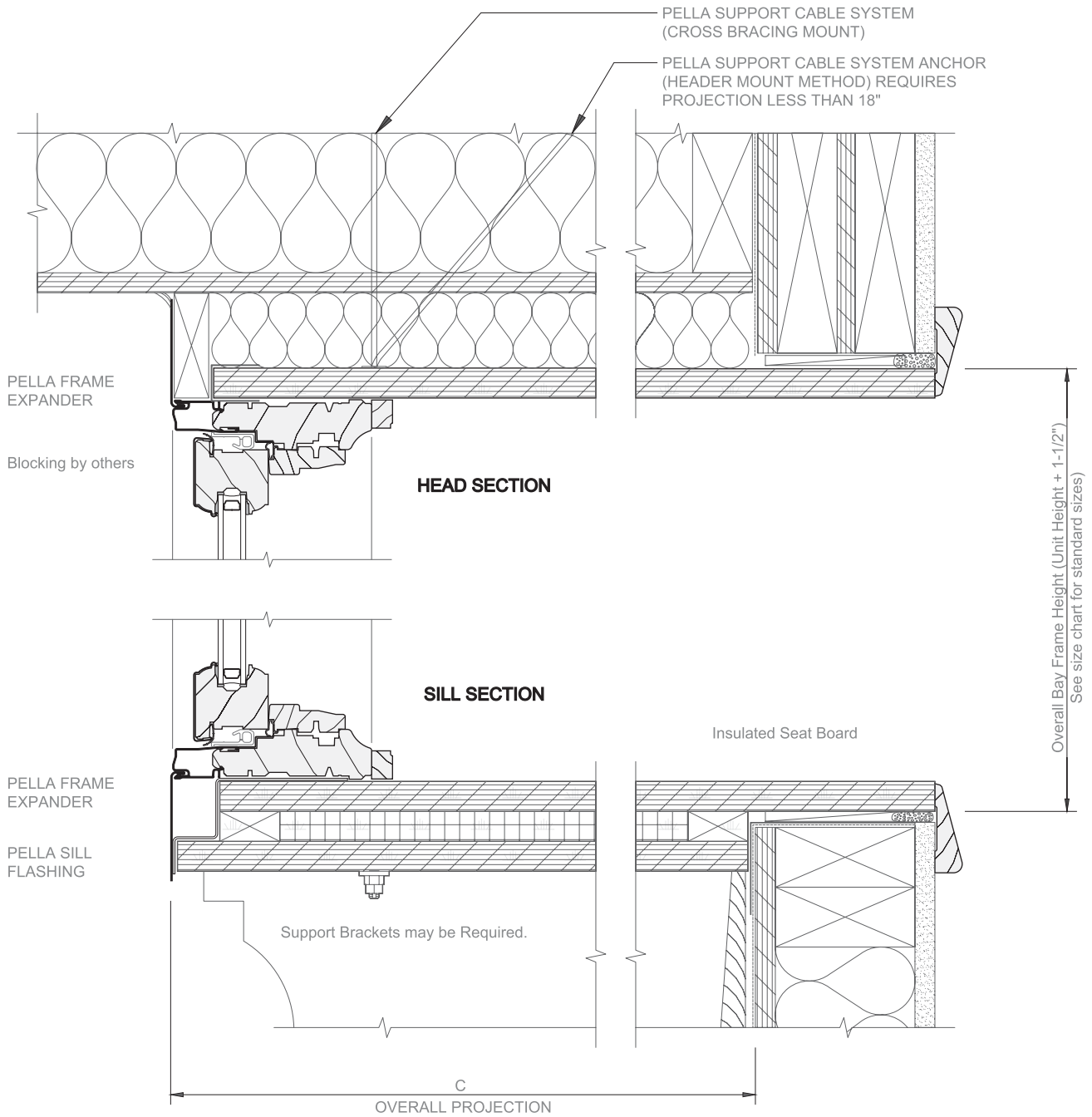
Flanker Frame Width Inches (mm)	A R.O. Width Inches (mm)	C Overall Projection Inches (mm)	D Overall Unit Width Inches (mm)
17 (432)	72-7/8 (1 851)	14-15/16 (380)	72-1/8 (1 832)
21 (533)	78-1/2 (1 994)	17-3/4 (452)	77-3/4 (1 975)
23 (584)	81-3/8 (2 066)	19-3/16 (487)	80-5/8 (2 047)
25 (635)	84-3/16 (2 138)	20-5/8 (523)	83-7/16 (2 119)
29 (737)	89-13/16 (2 282)	23-7/16 (595)	89-1/16 (2 263)
35 (889)	98-5/16 (2 497)	27-11/16 (703)	97-9/16 (2 478)

- Bay window combinations are not AAMA/WDMA performance rated. Pella factory-assembled bay combinations have been tested to meet a design pressure of 20 psf.
- For center unit frame width other than those shown:
 - > 41": Add difference between 41" and greater frame width to dimensions A, B and D.
 - < 41": Subtract difference between 41" and smaller frame width from dimensions A, B and D.
- Dimensioning points are shown in details.
- Overall projection (C dimension) is sheathing to face of bay. For sheathing to sheathing (walk-in bay) subtract 1-1/4".
- Specify height of window units to be used in bay.
- Max factory assembled combination width must be less than 144".



Clad-Wood Bay/Bow Windows

Installation Details - Casement Bay / Square Jamb



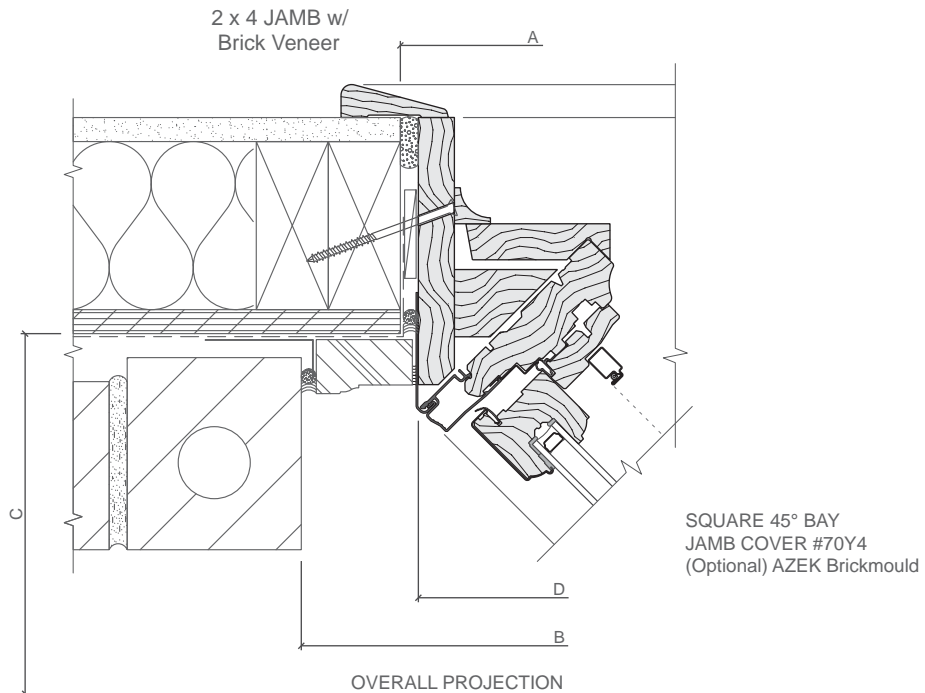
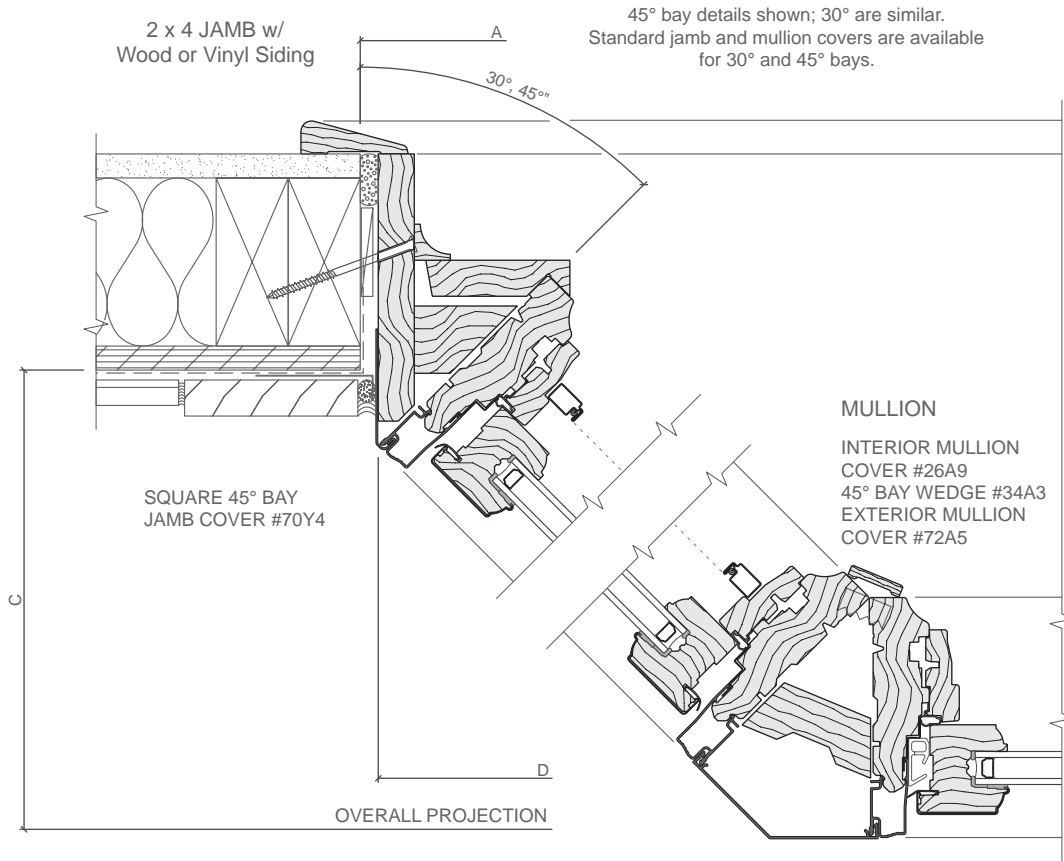
(1) The Bay/Bow support cables must be attached to structural members capable of supporting 1,300 lbs. Knee braces are required in addition to the support cables if the structural members are not capable of supporting 1,300 lbs. Bay/Bow units are not designed to support roof structure.

Head board and insulated seat board are included standard. Variance required to order without head and seat board



Clad-Wood Bay/Bow Windows

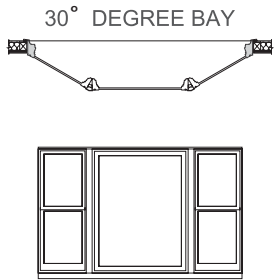
Installation Details - Casement Bay / Square Jamb



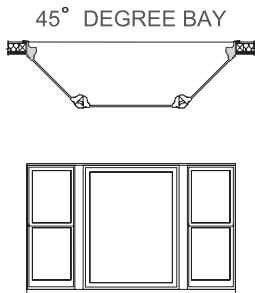


Clad-Wood Bay/Bow Windows

Size Tables - Double-Hung Bay / Square Jamb



30 Degree Bay - 53" Center Unit			
Flanker Frame Width Inches (mm)	A R.O. Width Inches (mm)	C Overall Projection Inches (mm)	D Overall Unit Width Inches (mm)
Factory Assembled			
21 (533)	95-1/8 (2 416)	12-5/8 (321)	94-3/8 (2 397)
25 (635)	102-1/16 (2 592)	14-5/8 (372)	101-5/16 (2 573)
29 (737)	109 (2 768)	16-5/8 (423)	108-1/4 (2 749)
Non-Factory Assembled			
33 (838)	115-15/16 (2 944)	18-5/8 (473)	115-3/16 (2 925)
37 (940)	122-13/16 (3 120)	20-5/8 (524)	122-1/16 (3 101)
41 (1 041)	129-3/4 (3 296)	22-5/8 (575)	129 (3 277)
45 (1 143) ₁	136-11/16 (3 472)	24-5/8 (626)	135-15/16 (3 453)



45 Degree Bay - 53" Center Unit			
Flanker Frame Width Inches (mm)	A R.O. Width Inches (mm)	C Overall Projection Inches (mm)	D Overall Unit Width Inches (mm)
Factory Assembled			
21 (533)	90-1/2 (2 299)	17-3/4 (452)	89-3/4 (2 280)
25 (635)	96-3/16 (2 443)	20-5/8 (523)	95-7/16 (2 424)
29 (737)	101-13/16 (2 587)	23-7/16 (595)	101-1/16 (2 568)
Non-Factory Assembled			
33 (838)	107-1/2 (2 730)	26-1/4 (667)	106-3/4 (2 711)
37 (940)	113-1/8 (2 874)	29-1/16 (739)	112-3/8 (2 855)
41 (1 041)	118-13/16 (3 018)	31-15/16 (811)	118-1/16 (2 999)
45 (1 143) ₁	124-7/16 (3 161)	34-3/4 (883)	123-11/16 (3 142)

(1) Available in Architect Series and Designer Series Only.

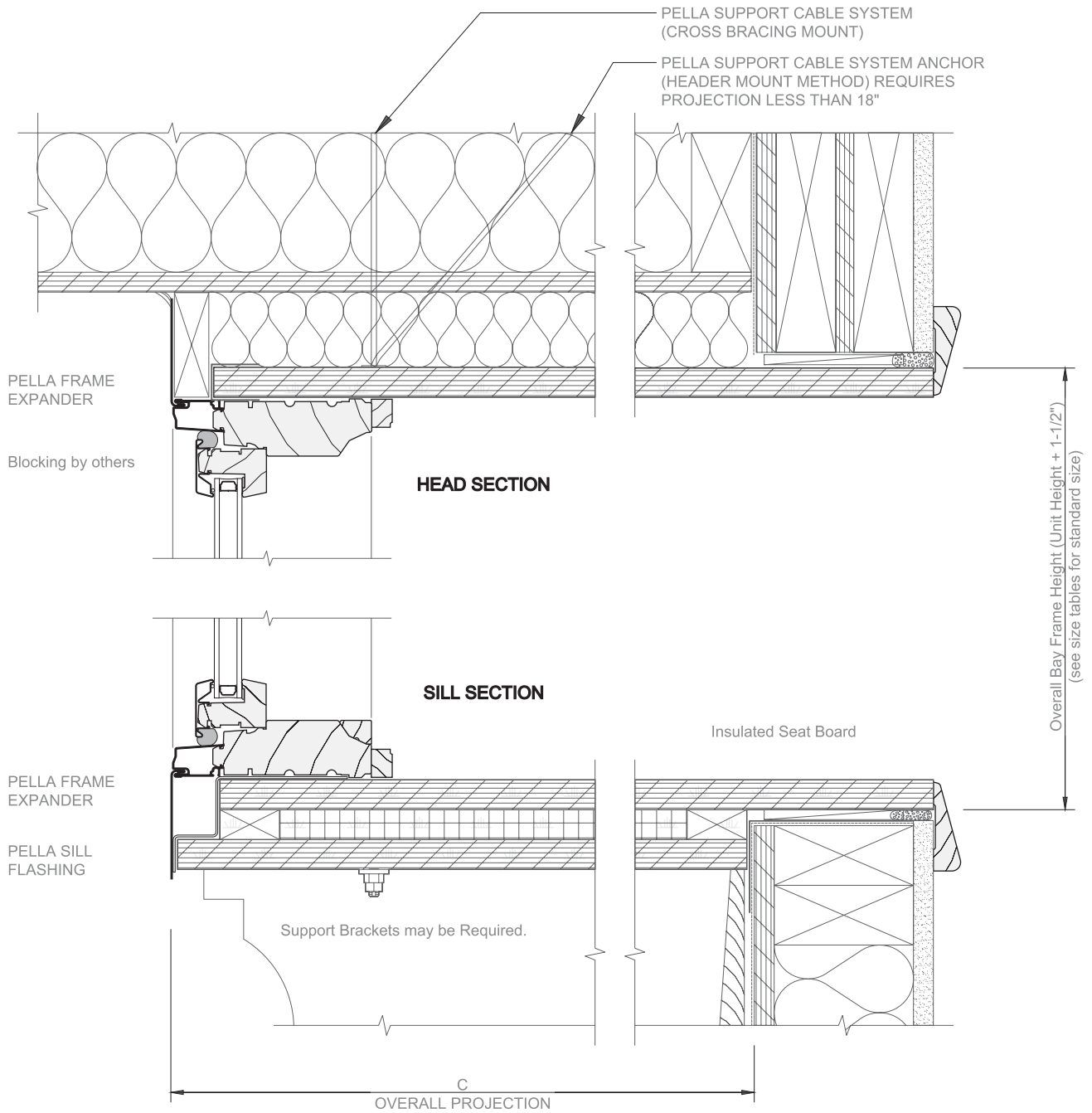
- Bay window combinations are not AAMA/WDMA performance rated. Pella factory-assembled bay combinations have been tested to meet a design pressure of 20 psf.
- For center unit frame width other than those shown:
 - < 53": Add difference between 53" and greater frame width to dimensions A and D.
 - < 53" Fixed Unit: Subtract difference between 53" and smaller frame width from dimensions A and D.

- Dimensioning points are shown in details.
 - Overall projection (C dimension) is sheathing to face of bay.
 - Masonry opening (M.O.) is the same as A dimension for bays with flanking double-hungs.
 - Specify height of window units to be used in bay.
- Max factory assembled combination width must be less than 144".



Clad-Wood Bay/Bow Windows

Installation Details - Double-Hung Bay / Square Jamb



(1) The Bay/Bow support cables must be attached to structural members capable of supporting 1,300 lbs. Knee braces are required in addition to the support cables if the structural members are not capable of supporting 1,300 lbs. Bay/Bow units are not designed to support roof structure.

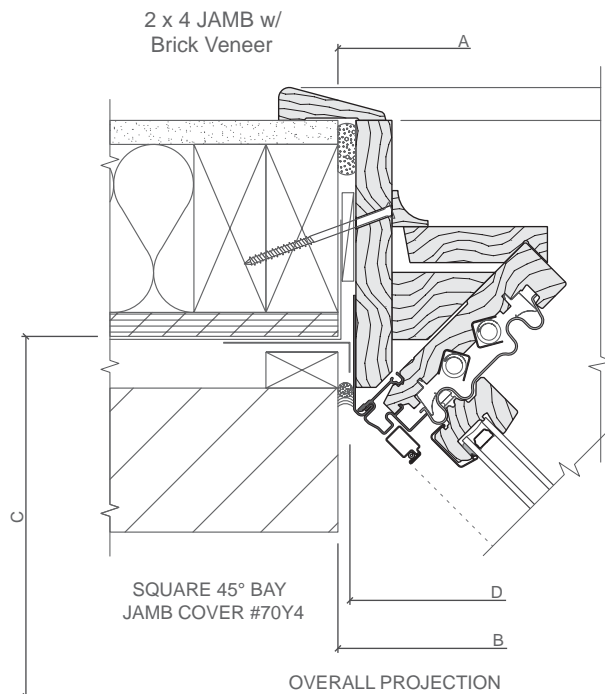
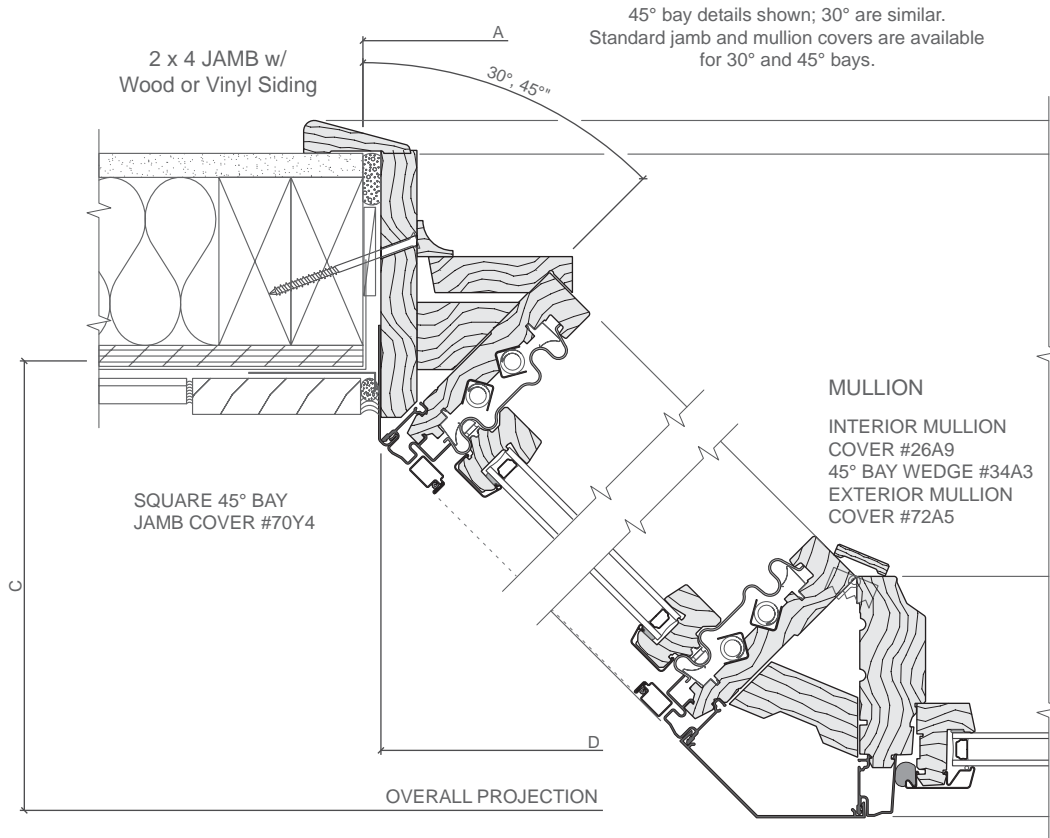
Head board and insulated seat board are included standard. Variance required to order without head and seat board

Scale 3" = 1' 0"



Clad-Wood Bay/Bow Windows

Installation Details - Double-Hung Bay / Square Jamb

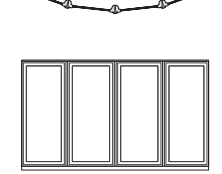




Clad-Wood Bay/Bow Windows

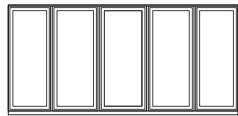
Size Tables - Casement Bow / Square Jamb

4-UNIT BOW

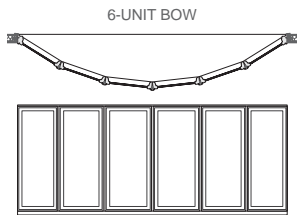


4-Unit				
Flanker Frame Width Inches (mm)	Radius	A R.O. Width Inches (mm)	C Overall Projection Inches (mm)	D Overall Unit Width Inches (mm)
21 (533)	94 (2 387)	85-7/16 (2 170)	11 (279)	84-11/16 (2 151)
23 (584)	102-15/16 (2 614)	93-3/16 (2 367)	11-7/8 (301)	92-7/16 (2 348)
25 (635)	111-7/8 (2 842)	100-15/16 (2 564)	12-3/4 (324)	100-3/16 (2 545)
29 (737)	129-3/4 (3 296)	116-7/16 (2 958)	14-1/2 (368)	115-11/16 (2 939)
35 (889)	156-5/8 (3 978)	139-3/4 (3 549)	17-1/8 (435)	139 (3 530)

5-UNIT BOW



5-Unit				
Flanker Frame Width Inches (mm)	Radius	A R.O. Width Inches (mm)	C Overall Projection Inches (mm)	D Overall Unit Width Inches (mm)
17 (432)	76-1/16 (1 932)	69-7/8 (2 182)	12-3/4 (325)	69-1/8 (2 163)
21 (533)	94 (2 387)	104-15/16 (2 665)	15-3/8 (391)	104-3/16 (2 646)
23 (584)	102-15/16 (2 614)	114-7/16 (2 907)	16-11/16 (424)	113-11/16 (2 888)
25 (635)	111-7/8 (2 842)	123-15/16 (3 148)	18 (457)	123-3/16 (3 129)
29 (737)	129-3/4 (3 296)	143 (3 632)	20-5/8 (523)	142-1/4 (3 613)
35 (889) *	156-5/8 (3 978)	171-1/2 (4 356)	24-1/2 (622)	170-3/4 (4 337)



6-Unit				
Flanker Frame Width Inches (mm)	Radius	A R.O. Width Inches (mm)	C Overall Projection Inches (mm)	D Overall Unit Width Inches (mm)
17 (432)	76-1/16 (1 932)	100-7/8 (2 562)	17-3/8 (441)	100-1/8 (2 543)
21 (533)	93 (2 362)	123-1/8 (3 127)	21-1/4 (540)	122-3/8 (3 108)
23 (584)	102-15/16 (2 615)	134-1/4 (3 410)	23-1/8 (587)	133-1/2 (3 391)
25 (635)*	111-7/8 (2 842)	145-3/8 (3 693)	25-1/8 (638)	144-5/8 (3 673)
29 (737)*	129-3/4 (3 296)	167-3/4 (4 261)	29 (737)	167 (4 242)
35 (889)*	156-3/8 (3 972)	201-1/8 (5 109)	34-3/4 (883)	200-3/8 (5 090)

* Not Factory Assembled

• Bow window combinations are not AAMA/WDMA performance rated, Pella factory-assembled bow combinations have been tested to meet a design pressure of 20 psf.

• Dimensioning points are shown in details.

• Overall projection (C dimension) is from sheathing to face of bow.

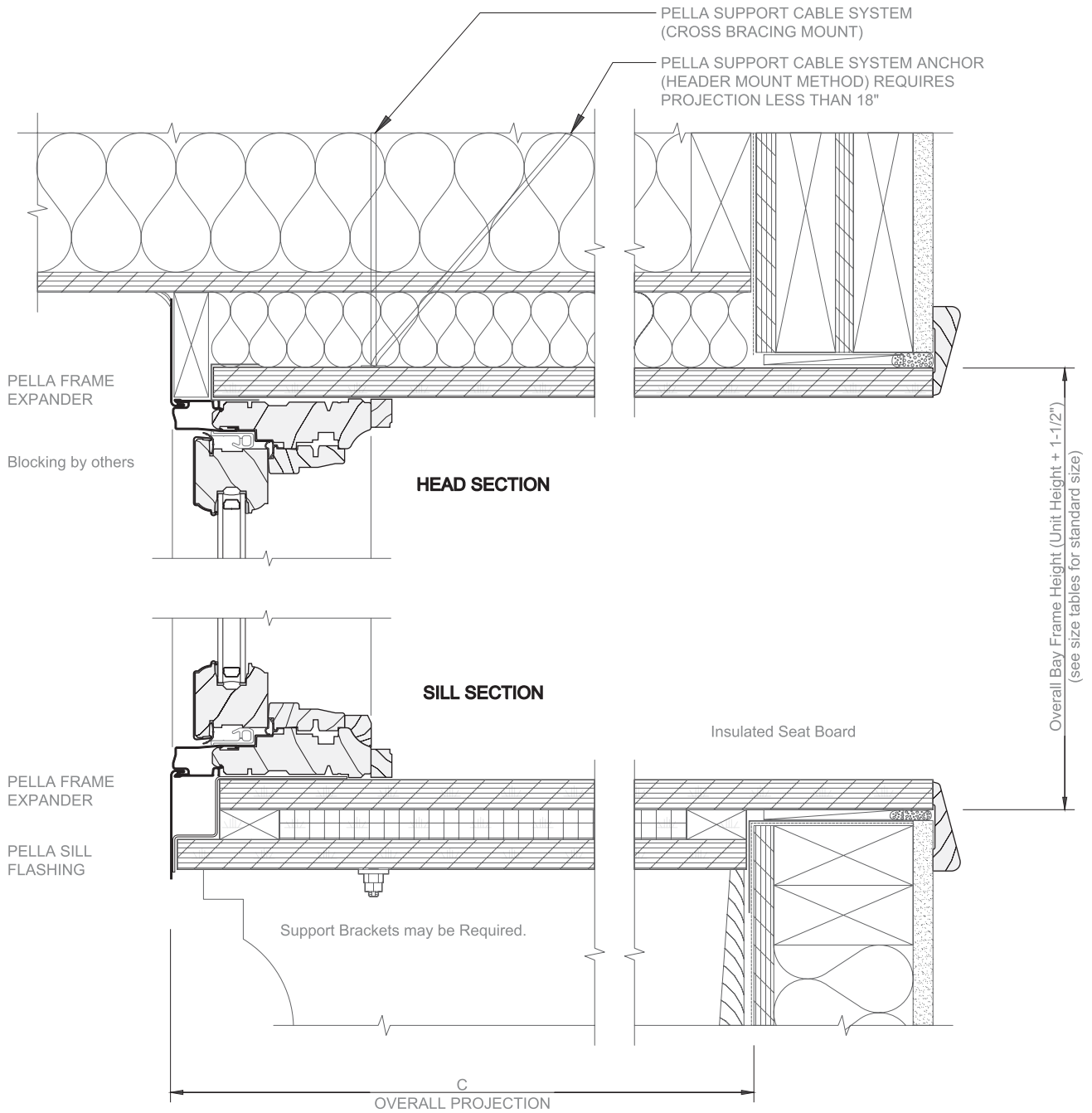
• Specify height of window units to be used in bow.

Max factory assembled combination width must be less than 144".



Clad-Wood Bay/Bow Windows

Installation Details - Casement Bow / Square Jamb



(1) The Bay/Bow support cables must be attached to structural members capable of supporting 1,300 lbs. Knee braces are required in addition to the support cables if the structural members are not capable of supporting 1,300 lbs. Bay/Bow units are not designed to support roof structure.

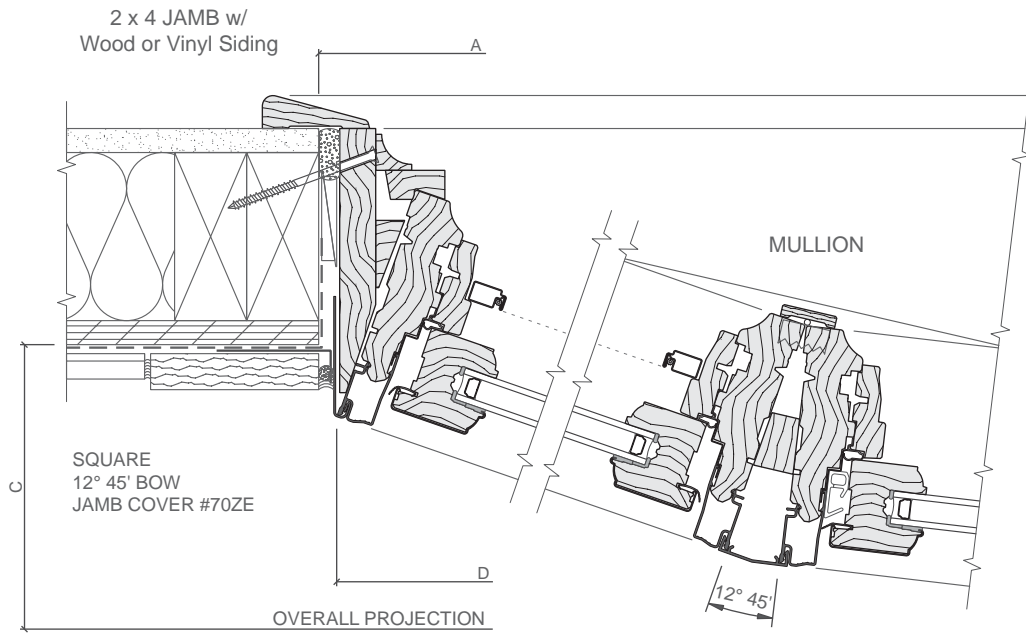
Head board and insulated seat board are included standard. Variance required to order without head and seat board

Scale 3" = 1' 0"

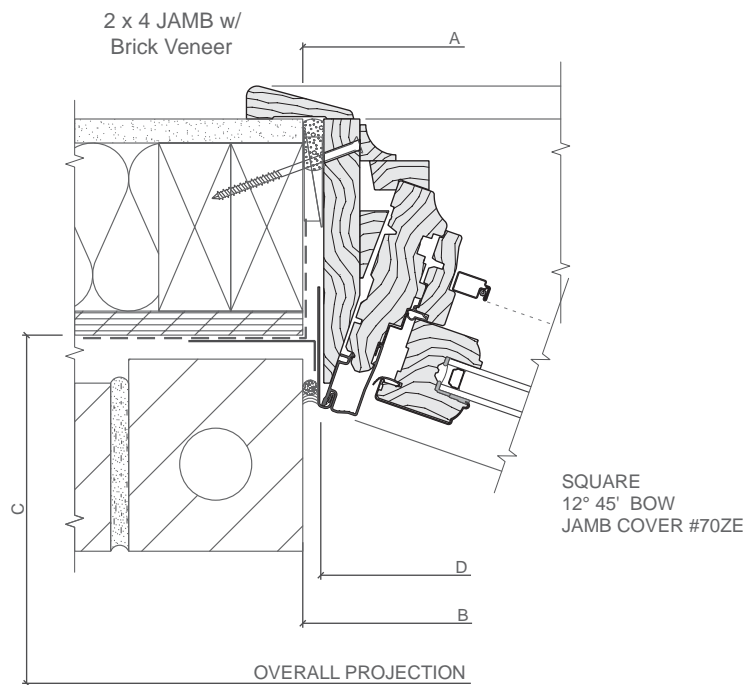


Clad-Wood Bay/Bow Windows

Installation Details - Casement Bow / Square Jamb



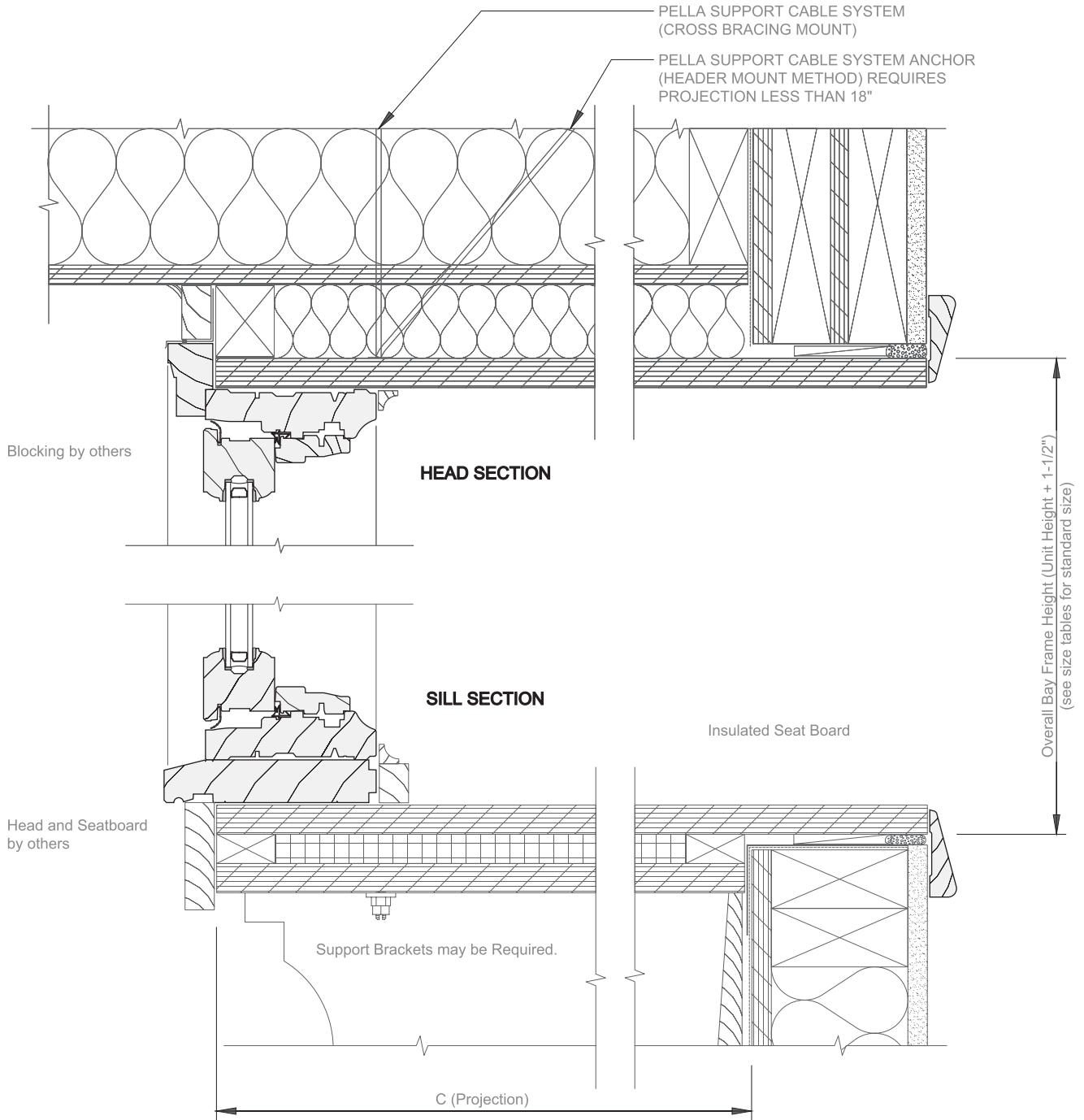
INTERIOR MULLION OVER #26A9
12° 45' BOW WEDGE #33CX
EXTERIOR MULLION COVER #72A3





Clad-Wood Bay/Bow Windows

Installation Details - Casement Bay / Wood Exterior (Field Mull Only)



(1) The Bay/Bow support cables must be attached to structural members capable of supporting 1,300 lbs. Knee braces are required in addition to the support cables if the structural members are not capable of supporting 1,300 lbs. Bay/Bow units are not designed to support roof structure.

Head board and insulated seat board are included standard. Variance required to order without head and seat board

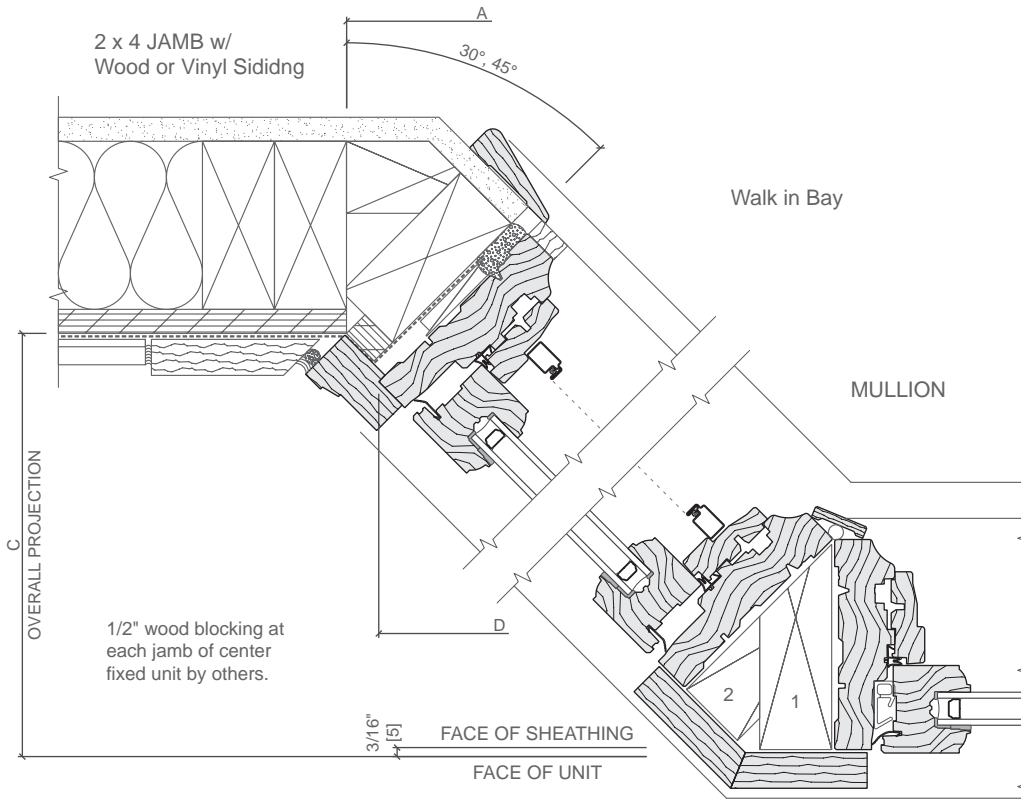
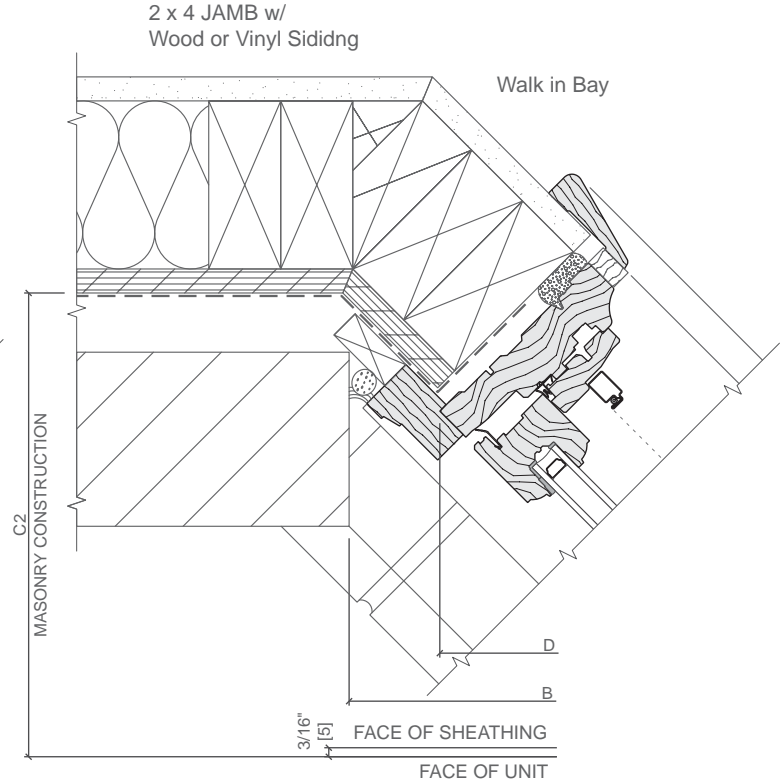
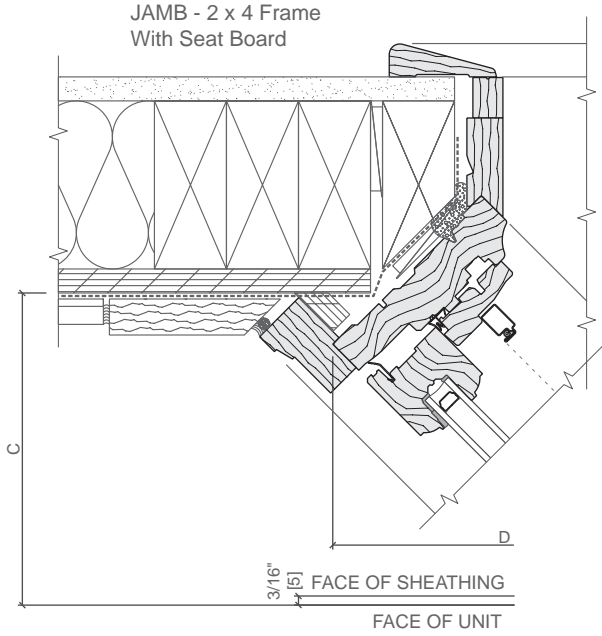
Scale 3" = 1' 0"



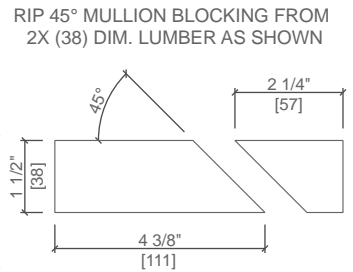
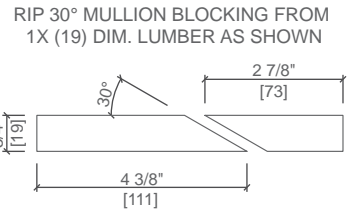
Clad-Wood Bay/Bow Windows

Installation Details - Casement Bay / Wood Exterior (Field Mull Only)

45° bay details shown; 30° are similar.
Standard jamb and mullion covers are available
for 30° and 45° bays.



MULLION BLOCKING DIMENSIONS

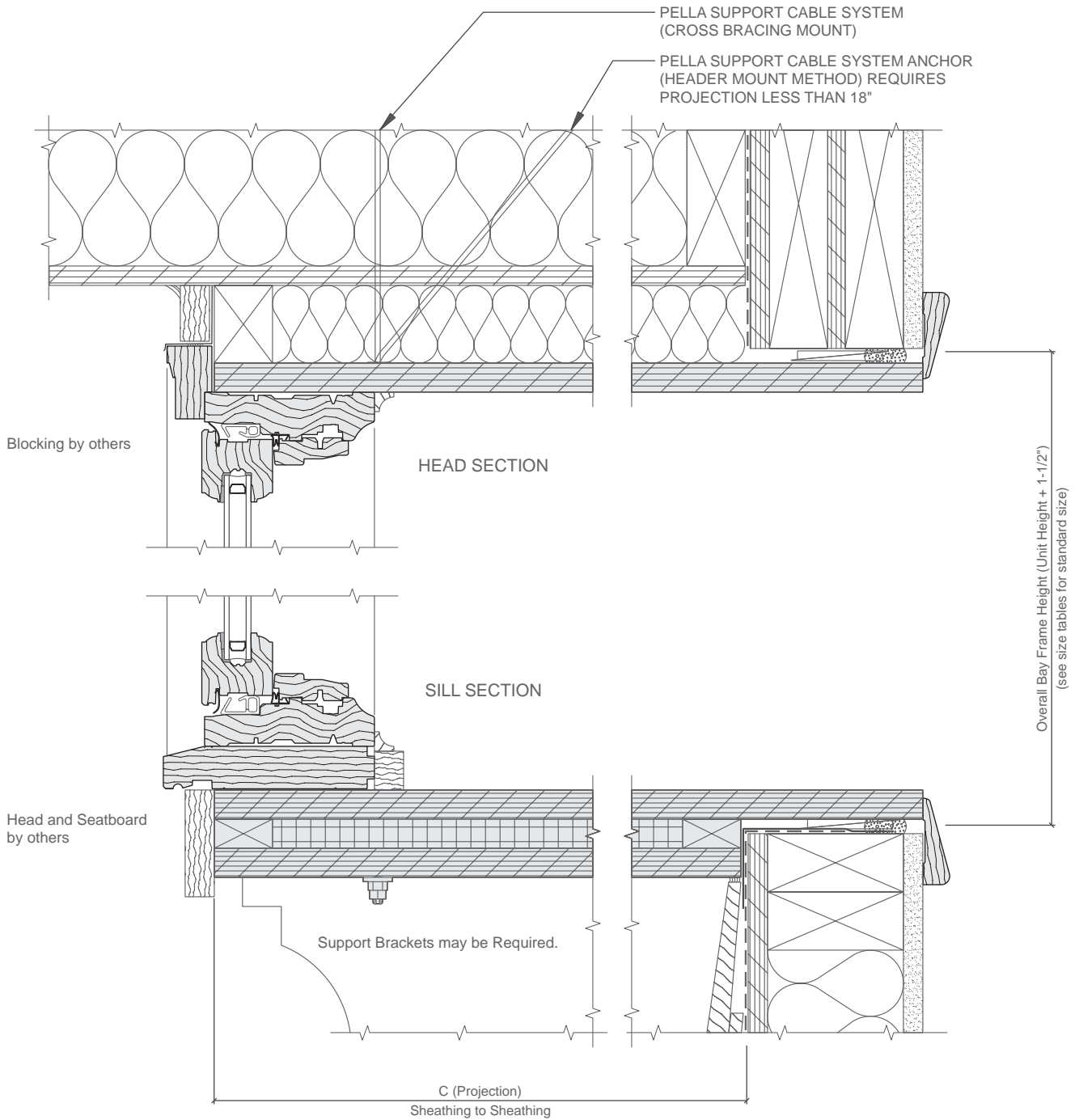


INTERIOR MULLION
COVER #3015
45° EXTERIOR MULLION
COVER #1040



Clad-Wood Bay/Bow Windows

Installation Details - Double-Hung Bay / Wood Exterior (Field Mull Only)



(1) The Bay/Bow support cables must be attached to structural members capable of supporting 1,300 lbs. Knee braces are required in addition to the support cables if the structural members are not capable of supporting 1,300 lbs. Bay/Bow units are not designed to support roof structure.

Head board and insulated seat board are included standard. Variance required to order without head and seat board

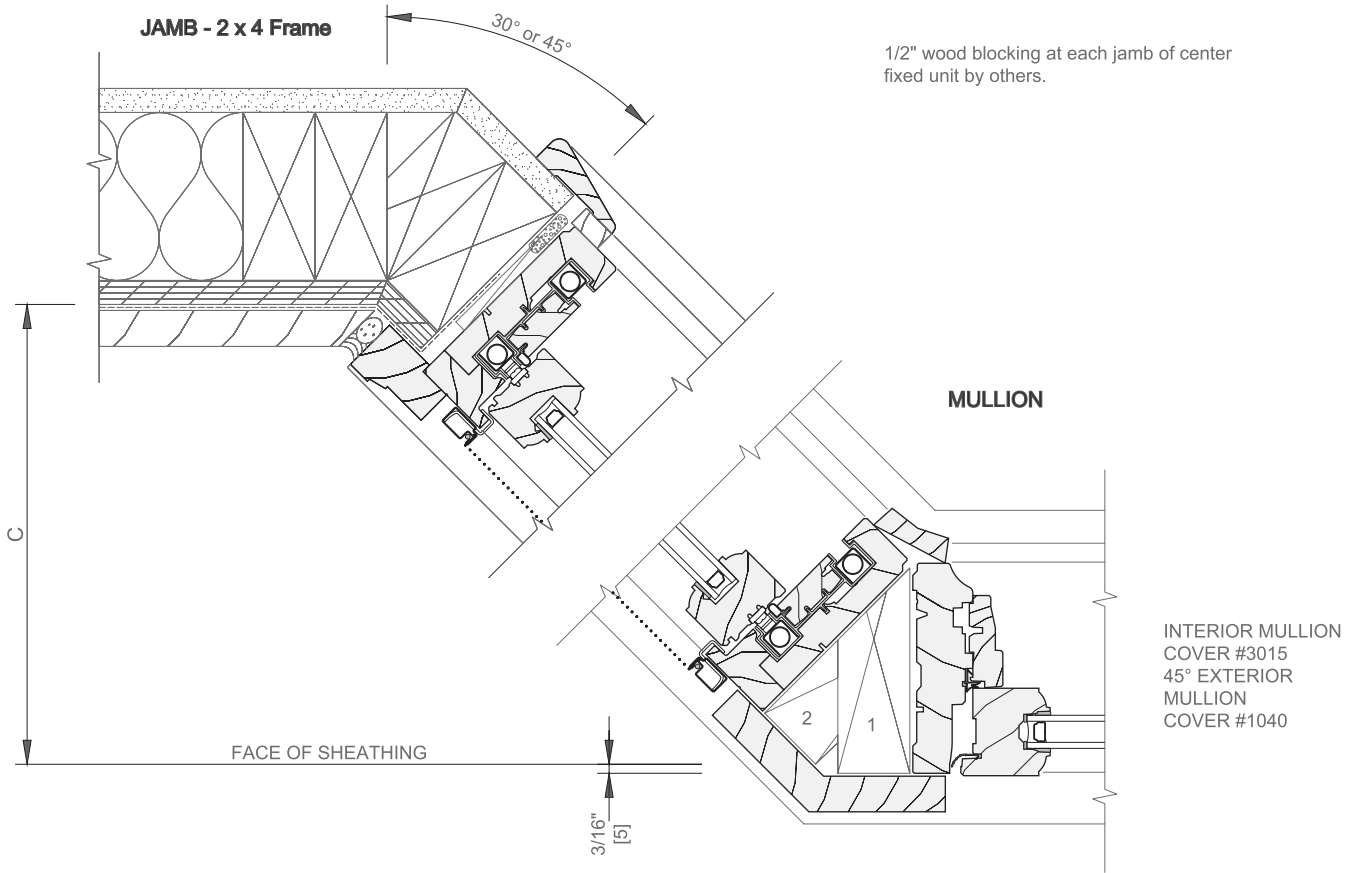
Scale 3" = 1' 0"



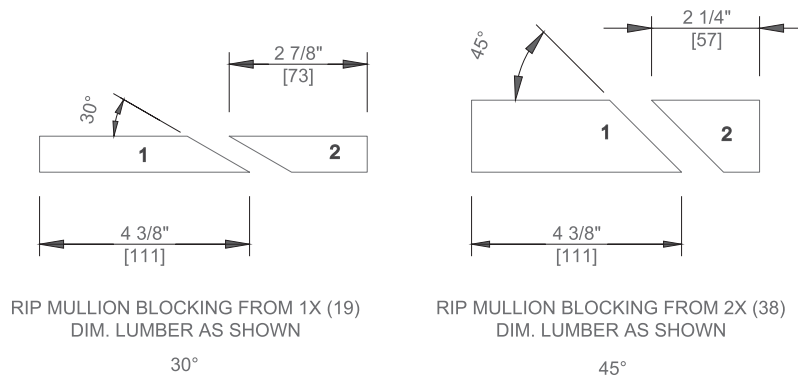
Clad-Wood Bay/Bow Windows

Installation Details - Double-Hung Bay / Wood Exterior (Field Mull Only)

45° bay details shown; 30° are similar.
Standard jamb and mullion covers are available
for 30° and 45° bays.



MULLION BLOCKING DIMENSIONS

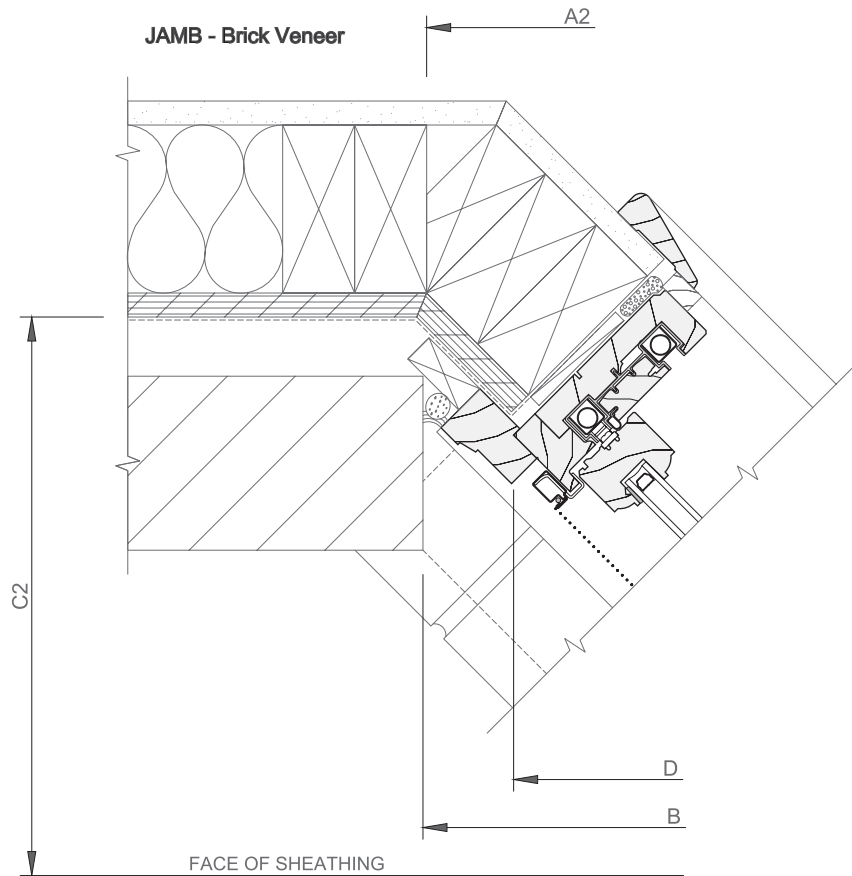
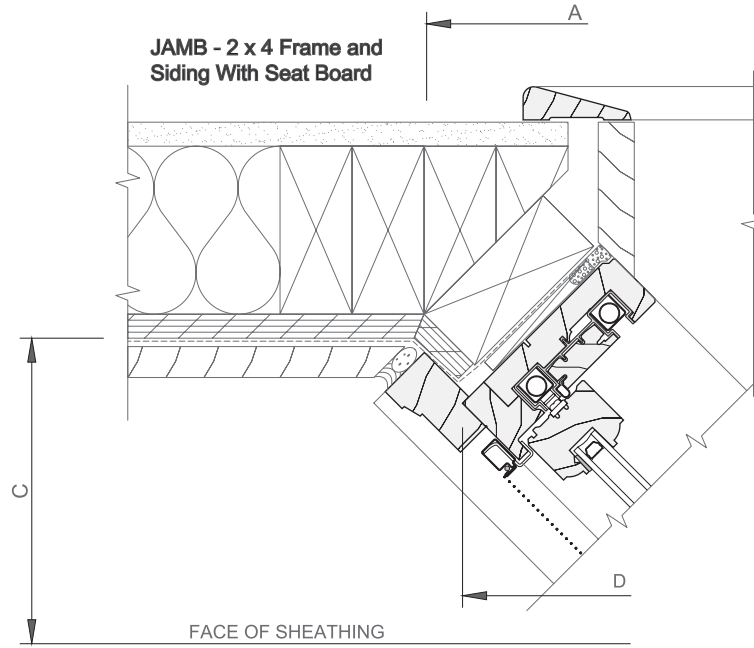


Scale 3" = 1' 0"



Clad-Wood Bay/Bow Windows

Installation Details - Double-Hung Bay / Wood Exterior (Field Mull Only)

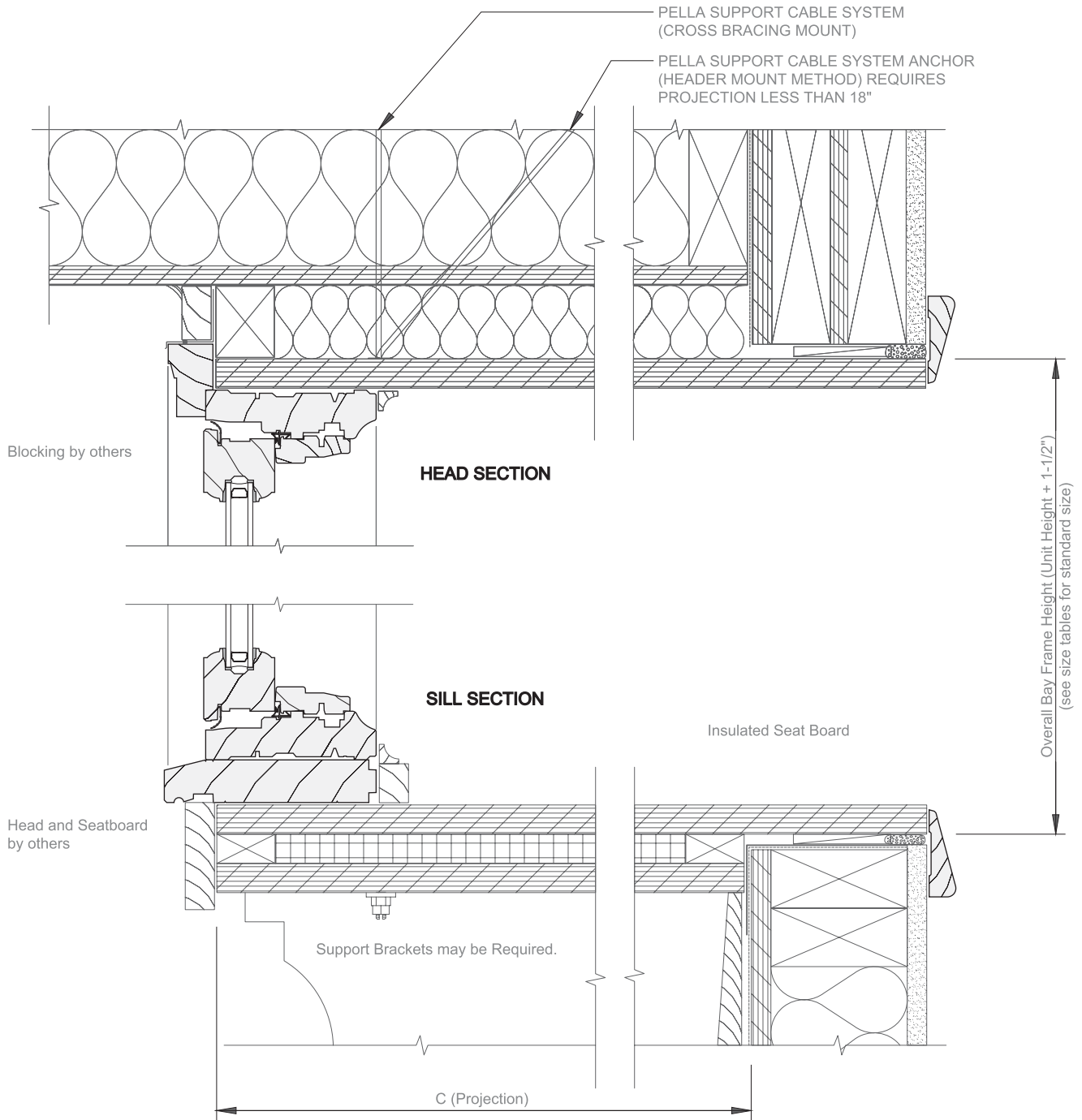


Scale 3" = 1' 0"



Clad-Wood Bay/Bow Windows

Installation Details - Casement Bow / Wood Exterior (Field Mull Only)



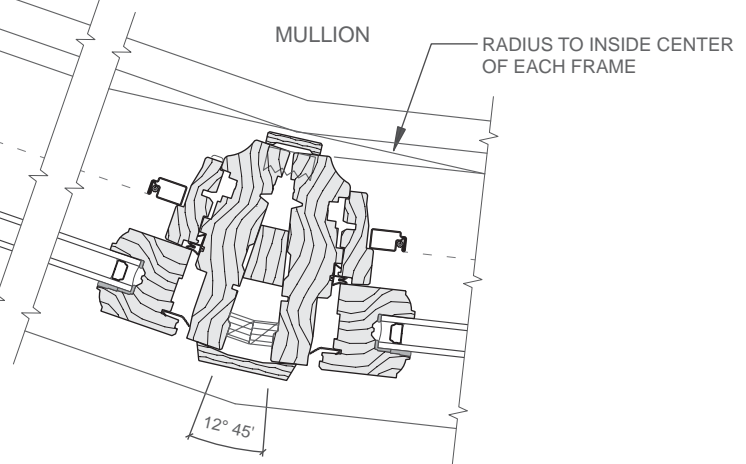
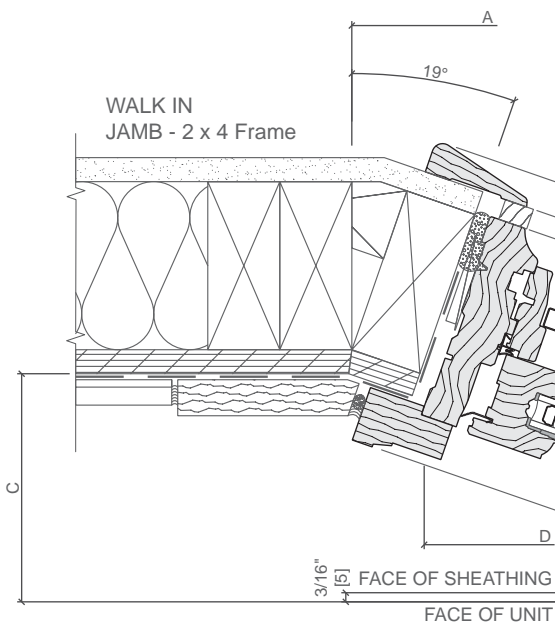
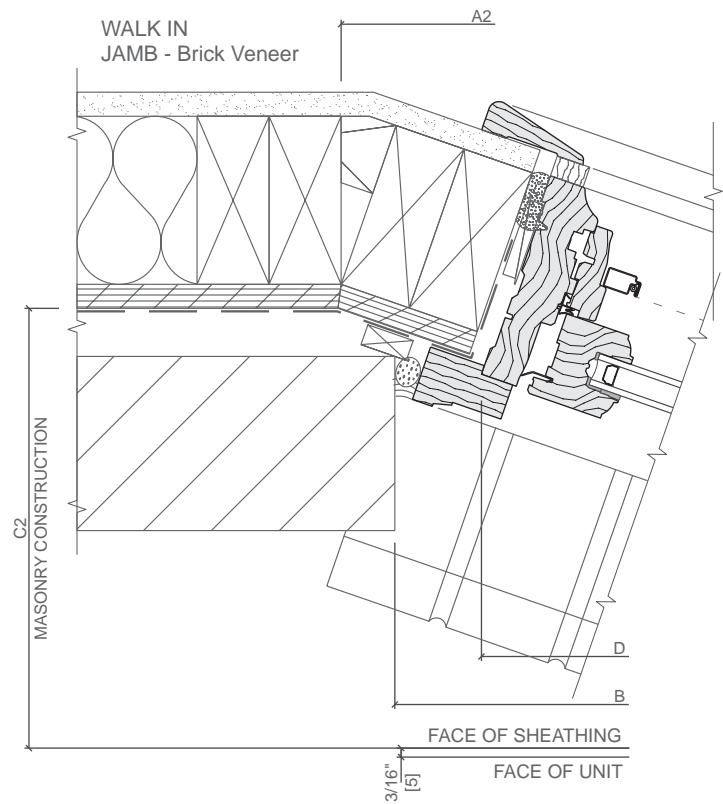
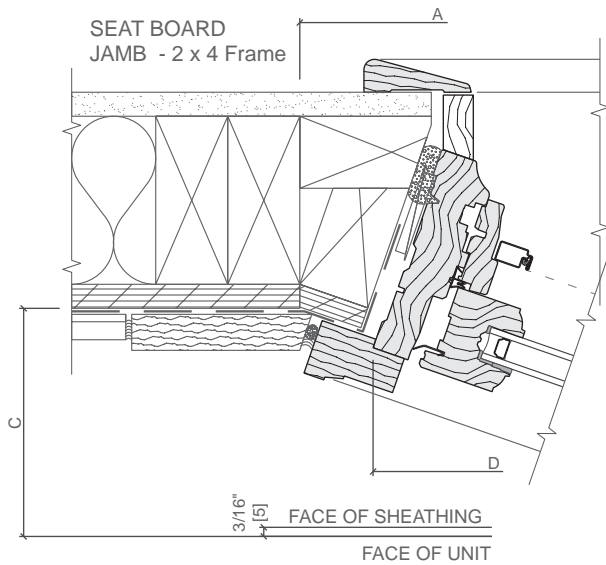
(1) The Bay/Bow support cables must be attached to structural members capable of supporting 1,300 lbs. Knee braces are required in addition to the support cables if the structural members are not capable of supporting 1,300 lbs. Bay/Bow units are not designed to support roof structure.

Head board and insulated seat board are included standard. Variance required to order without head and seat board



Clad-Wood Bay/Bow Windows

Installation Details - Casement Bow / Wood Exterior (Field Mull Only)



INTERIOR MULLION OVER #26A9
12° 45' BOW WEDGE #33CX
EXTERIOR MULLION COVER #3149