



## Product Details

### Casement Bay Windows

Size Tables ..... F-BB-2

Installation Details ..... F-BB-3

### Double-Hung and Single-Hung Bay Windows

Size Tables ..... F-BB-6

Installation Details ..... F-BB-7

### Casement Bow Windows

Size Tables ..... F-BB-8

Installation Details ..... F-BB-9

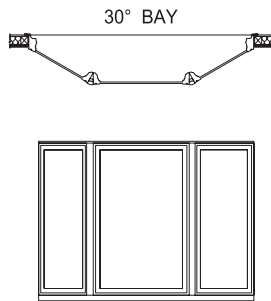
---

The information published in this document is believed to be accurate at the time of publication. However, because we are constantly working to improve our products, specifications are subject to change without notice. Consult your local Pella representative for up-to-date product information.



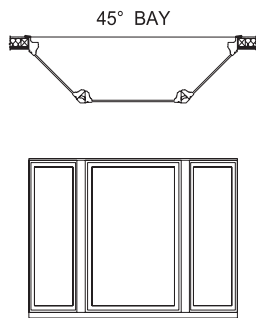
# Impervia® Bay/Bow Windows

## Size Tables - Casement Bay



**30 Degree Casement Bay - 40" Center Unit**

Flanker Frame Width Inches (mm)	A R.O. Width Inches (mm)	B M.O. Width Inches (mm)	C Overall Projection Inches (mm)	D Overall Unit Width Inches (mm)
18" (457)	80-3/4" (2051)	80-3/4" (2051)	10-1/2" (267)	80" (2032)
20-1/4" (514)	84-3/4" (2153)	84-3/4" (2153)	11-11/16" (297)	84" (2134)
23-3/4" (603)	90-3/4" (2305)	90-3/4" (2305)	13-3/8" (340)	90" (2286)
27-1/4" (692)	96-3/4" (2457)	96-3/4" (2457)	15-1/8" (384)	96" (2438)
30-3/4" (781)	102-3/4" (2610)	102-3/4" (2610)	16-7/8" (429)	102" (2591)
34-1/4" (870)	108-3/4" (2762)	108-3/4" (2762)	18-9/16" (471)	108" (2743)



**45 Degree Casement Bay - 40" Center Unit**

Flanker Frame Width Inches (mm)	A R.O. Width Inches (mm)	B M.O. Width Inches (mm)	C Overall Projection Inches (mm)	D Overall Unit Width Inches (mm)
21-1/2" (546)	80-3/4" (2051)	80-3/4" (2051)	17-3/4" (451)	80" (2032)
24-1/4" (616)	84-3/4" (2153)	84-3/4" (2153)	19-3/4" (502)	84" (2134)
28-1/2" (724)	90-3/4" (2305)	90-3/4" (2305)	22-3/4" (578)	90" (2286)
32-3/4" (832)	96-3/4" (2457)	96-3/4" (2457)	25-3/4" (654)	96" (2438)
37" (940)	102-3/4" (2610)	102-3/4" (2610)	28-3/4" (730)	102" (2591)
39-3/4" (1010)	106-3/4" (2711)	106-3/4" (2711)	30-3/4" (781)	106" (2692)

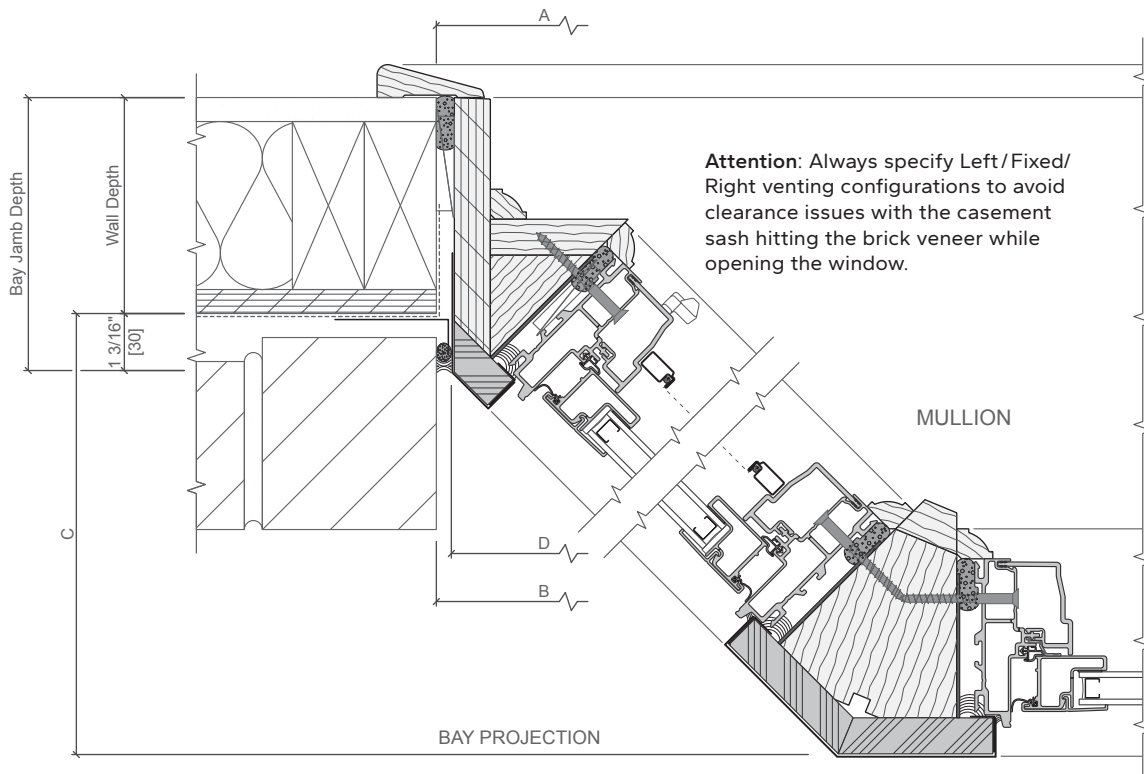
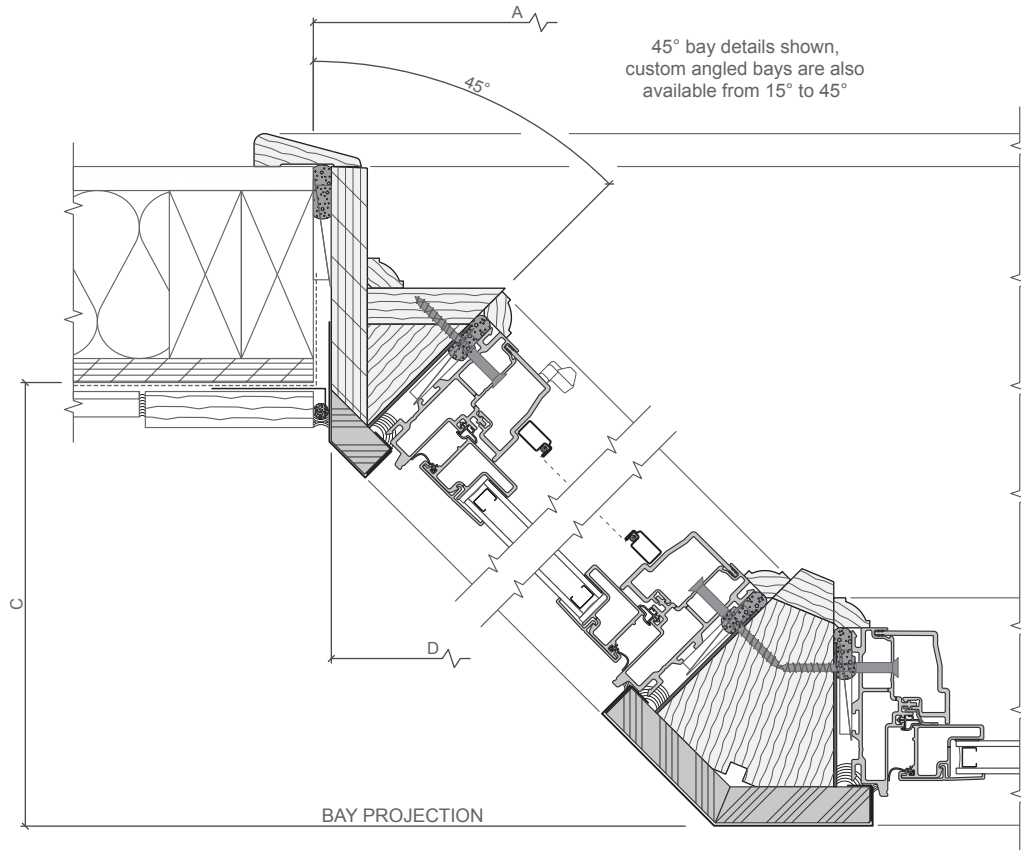
Note: Other combinations are available between 15 and 45 degrees. Contact your local Sales Representative for more detailed information.

- Bay window combinations are not AAMA/WDMA performance rated.
- For center unit frame width other than those shown:
  - Greater than 40" - add difference between 40" and greater frame width to dimensions A, B and D.
  - Less than 40" - subtract difference between 40" and smaller frame width from dimensions A, B and D.
- Dimensioning points are shown in details.
- Overall projection (C dimension) is sheathing to face of bay.
- Specify overall frame height of bay unit.



# Impervia® Bay/Bow Windows

## Installation Details - Casement Bay



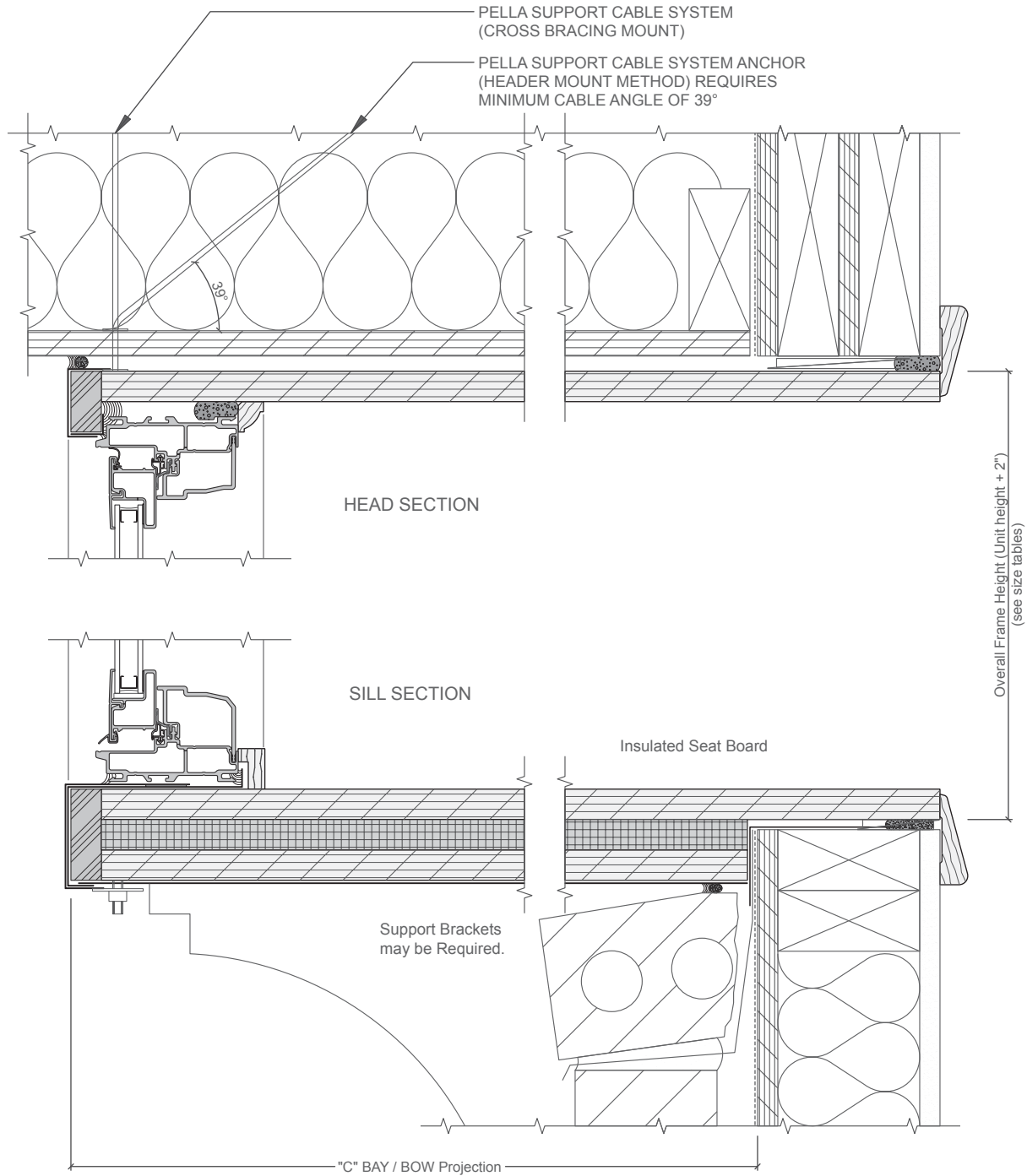
Scale 3" = 1' 0"

Maximum Jamb Depth = 10-3/8"



# Impervia® Bay/Bow Windows

## Installation Details - Casement Bay



(1) The Bay/Bow support cables must be attached to structural members capable of supporting 1,300 lbs. Knee braces are required in addition to the support cables if the structural members are not capable of supporting 1,300 lbs. Bay/Bow units are not designed to support roof structure.

Scale 3" = 1' 0"

The Bay/Bow support cables must be attached to structural members capable of supporting 1,300 lbs.

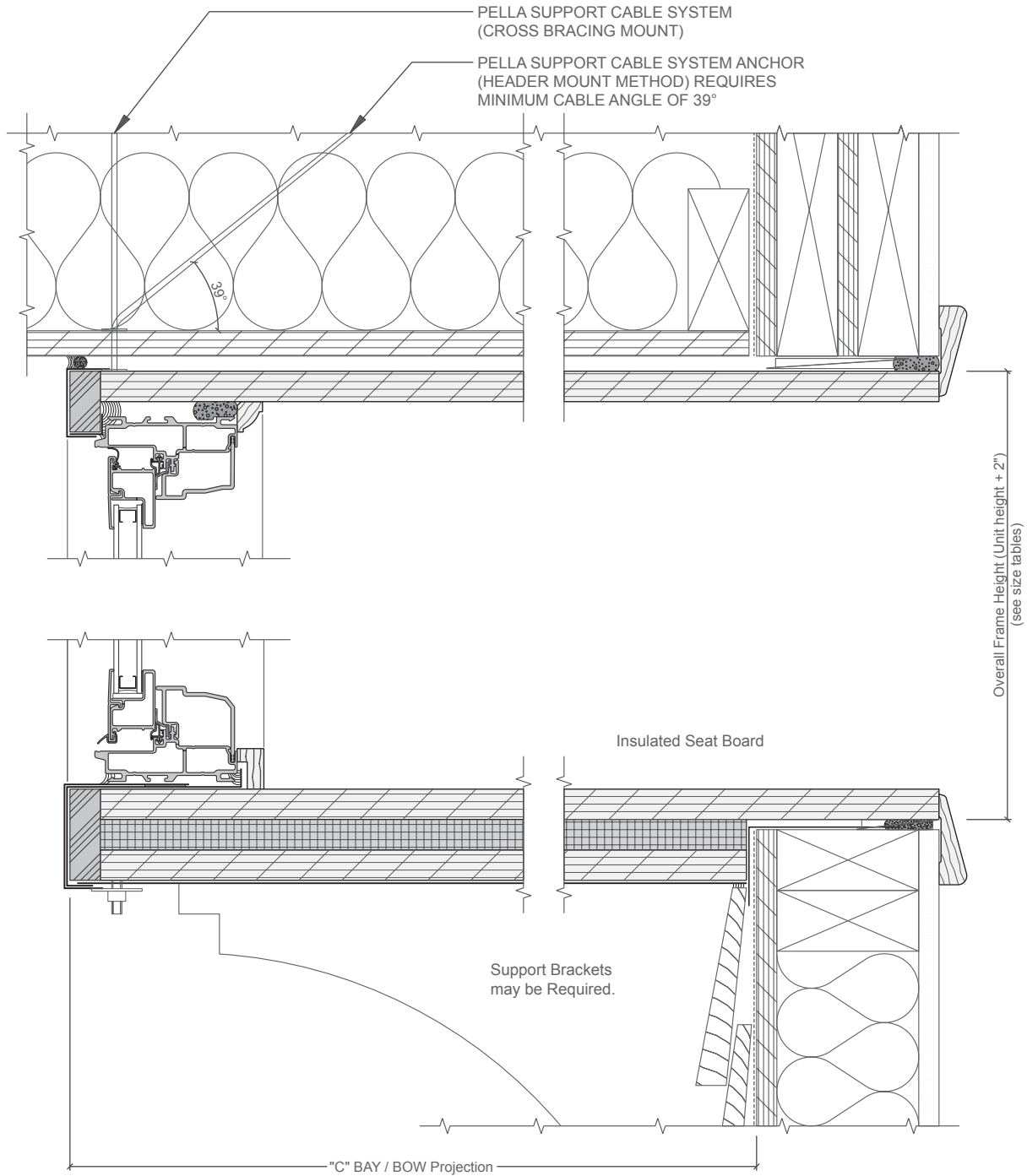
Knee braces are required in addition to the support cables if the structural members are not capable of supporting 1,300 lbs. Bay/Bow units are not designed to support roof structure.

Interior Head / Jamb / Sill stops are included with the bay.



# Impervia® Bay/Bow Windows

## Installation Details - Casement Bay



Scale 3" = 1' 0"

The Bay/Bow support cables must be attached to structural members capable of supporting 1,300 lbs.

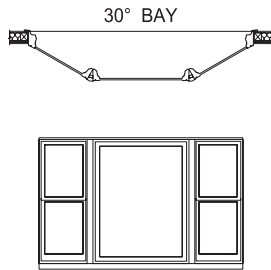
Knee braces are required in addition to the support cables if the structural members are not capable of supporting 1,300 lbs. Bay/Bow units are not designed to support roof structure.

Interior Head / Jamb / Sill stops are included with the bay.



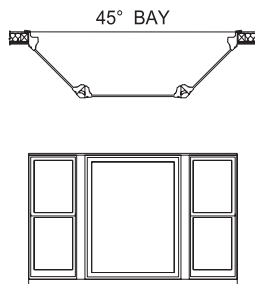
# Impervia® Bay/Bow Windows

## Size Tables - Double-Hung or Single-Hung Bay



**30 Degree Bay - 40" Center Unit**

Flanker Frame Width Inches (mm)	A R.O. Width Inches (mm)	B M.O. Width Inches (mm)	C Overall Projection Inches (mm)	D Overall Unit Width Inches (mm)
18" (457)	80-3/4" (2051)	80-3/4" (2051)	10-1/2" (267)	80" (2032)
20-1/4" (514)	84-3/4" (2153)	84-3/4" (2153)	11-11/16" (297)	84" (2134)
23-3/4" (603)	90-3/4" (2305)	90-3/4" (2305)	13-3/8" (340)	90" (2286)
27-1/4" (692)	96-3/4" (2457)	96-3/4" (2457)	15-1/8" (384)	96" (2438)
30-3/4" (781)	102-3/4" (2610)	102-3/4" (2610)	16-7/8" (429)	102" (2591)
34-1/4" (870)	108-3/4" (2762)	108-3/4" (2762)	18-9/16" (471)	108" (2743)



**45 Degree Bay - 40" Center Unit**

Flanker Frame Width Inches (mm)	A R.O. Width Inches (mm)	B M.O. Width Inches (mm)	C Overall Projection Inches (mm)	D Overall Unit Width Inches (mm)
21-1/2" (546)	80-3/4" (2051)	80-3/4" (2051)	17-3/4" (451)	80" (2032)
24-1/4" (616)	84-3/4" (2153)	84-3/4" (2153)	19-3/4" (502)	84" (2134)
28-1/2" (724)	90-3/4" (2305)	90-3/4" (2305)	22-3/4" (578)	90" (2286)
32-3/4" (832)	96-3/4" (2457)	96-3/4" (2457)	25-3/4" (654)	96" (2438)
37" (940)	102-3/4" (2610)	102-3/4" (2610)	28-3/4" (730)	102" (2591)
39-3/4" (1010)	106-3/4" (2711)	106-3/4" (2711)	30-3/4" (781)	106" (2692)

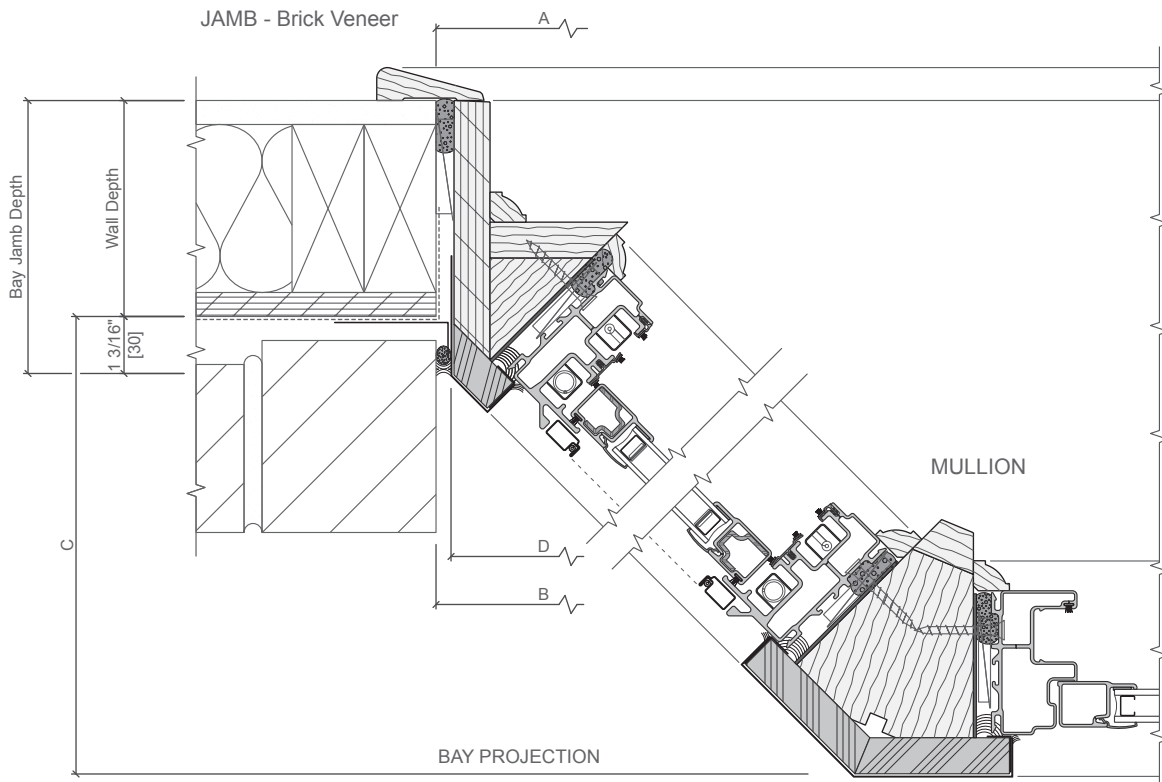
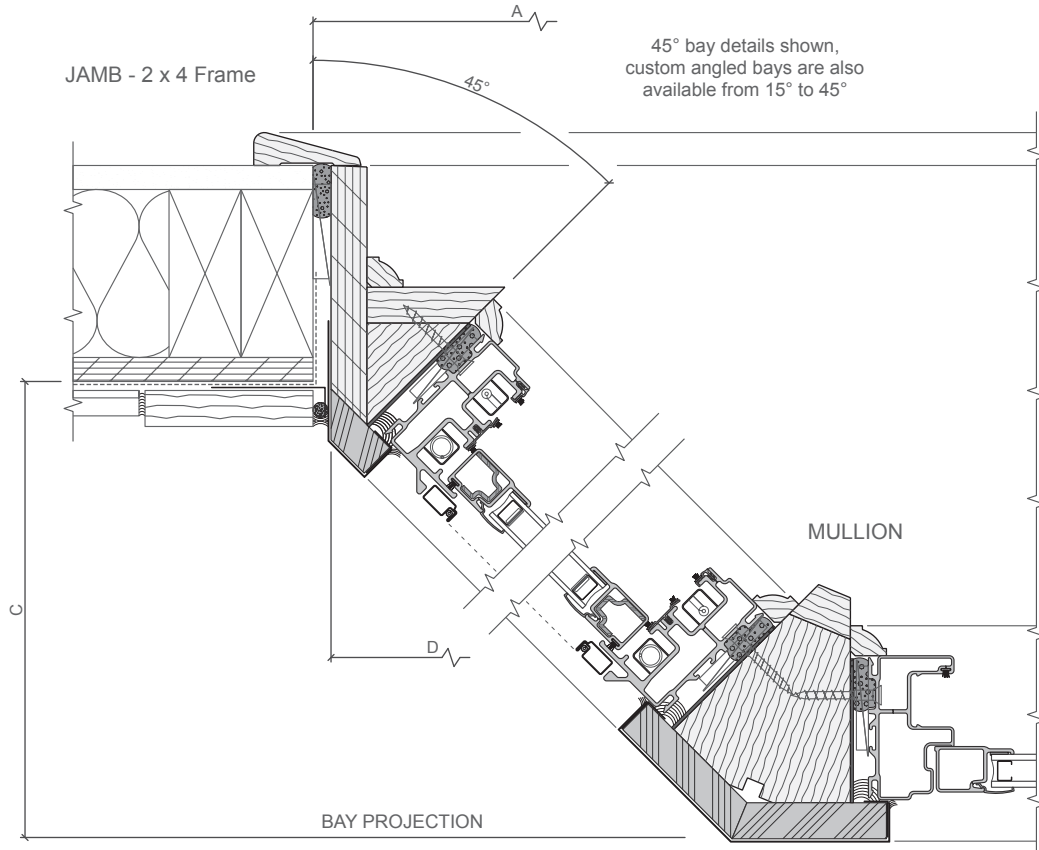
Note: Other combinations are available between 15 and 45 degrees. Contact your local Sales Representative for more detailed information.

- Bay window combinations are not AAMA/WDMA performance rated.
- For center unit frame width other than those shown:
  - Greater than 40" - add difference between 40" and greater frame width to dimensions A, B and D.
  - Less than 40" - subtract difference between 40" and smaller frame width from dimensions A, B and D.
- Dimensioning points are shown in details.
- Overall projection (C dimension) is sheathing to face of bay.
- Specify overall frame height of bay unit.



# Impervia® Bay/Bow Windows

## Installation Details - Double-Hung or Single-Hung



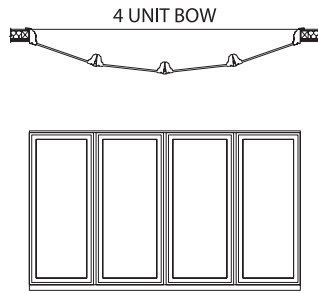
Scale 3" = 1' 0"

Maximum Jamb Depth = 10-3/8"

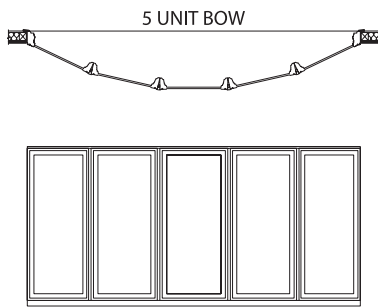


# Impervia® Bay/Bow Windows

## Size Tables - Casement Bow



4-Unit bow				
Flanker Frame Width Inches (mm)	A R.O. Width Inches (mm)	B M.O. Width Inches (mm)	C Overall Projection Inches (mm)	D Overall Unit Width Inches (mm)
21" (533)	92-3/4" (2356)	92-3/4" (2356)	12-1/4" (311)	92" (2337)
23" (584)	100-3/4" (2559)	100-3/4" (2559)	13-5/16" (338)	100" (2540)
25" (635)	108-3/4" (2762)	108-3/4" (2762)	14-3/8" (365)	108" (2743)
29" (737)	123-3/4" (3143)	123-3/4" (3143)	16-7/16" (418)	123" (3124)
34-1/2" (876)	144-3/4" (3677)	144-3/4" (3677)	19-1/4" (489)	144" (3658)



5-Unit bow				
Flanker Frame Width Inches (mm)	A R.O. Width Inches (mm)	B M.O. Width Inches (mm)	C Overall Projection Inches (mm)	D Overall Unit Width Inches (mm)
19" (483)	104-3/4" (2661)	104-3/4" (2661)	16-13/16" (411)	104" (2642)
21" (533)	113-3/4" (2889)	113-3/4" (2889)	18-5/16" (465)	113" (2870)
23" (584)	122-3/4" (3118)	122-3/4" (3118)	19-3/4" (502)	122" (3099)
25" (635)	132-3/4" (3372)	132-3/4" (3372)	21-3/8" (543)	132" (3353)
27-3/4" (705)	144-3/4" (3677)	144-3/4" (3677)	30-3/4" (781)	144" (3658)

Note: Other combinations are available between 5 and 22 degrees. Contact your local Sales Representative for more detailed information.

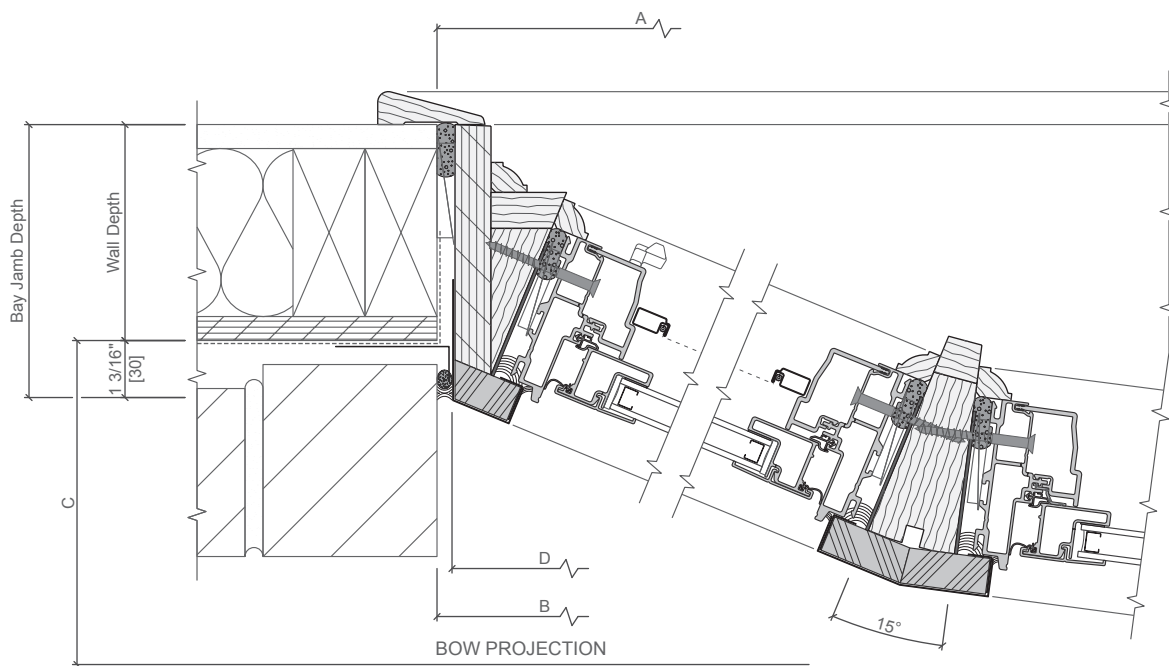
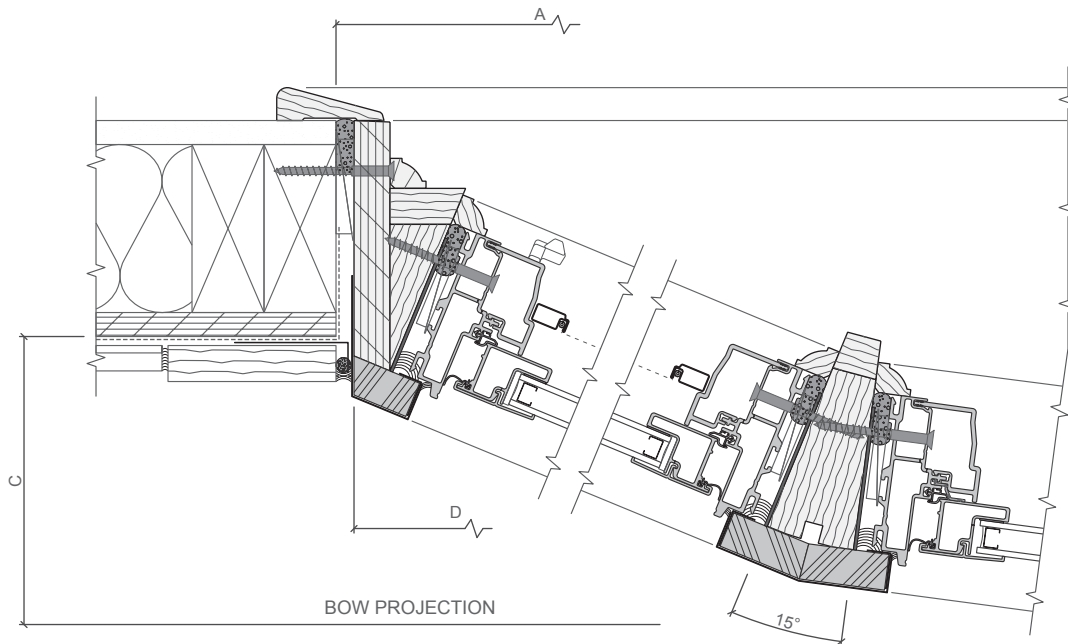
- Bow window combinations are not AAMA/WDMA performance rated.
- Dimensioning points are shown on details.
- Overall projection (C dimension) is sheathing to face of bow.
- Specify overall frame height of bow unit.





# Impervia® Bay/Bow Windows

## Installation Details - Casement Bow



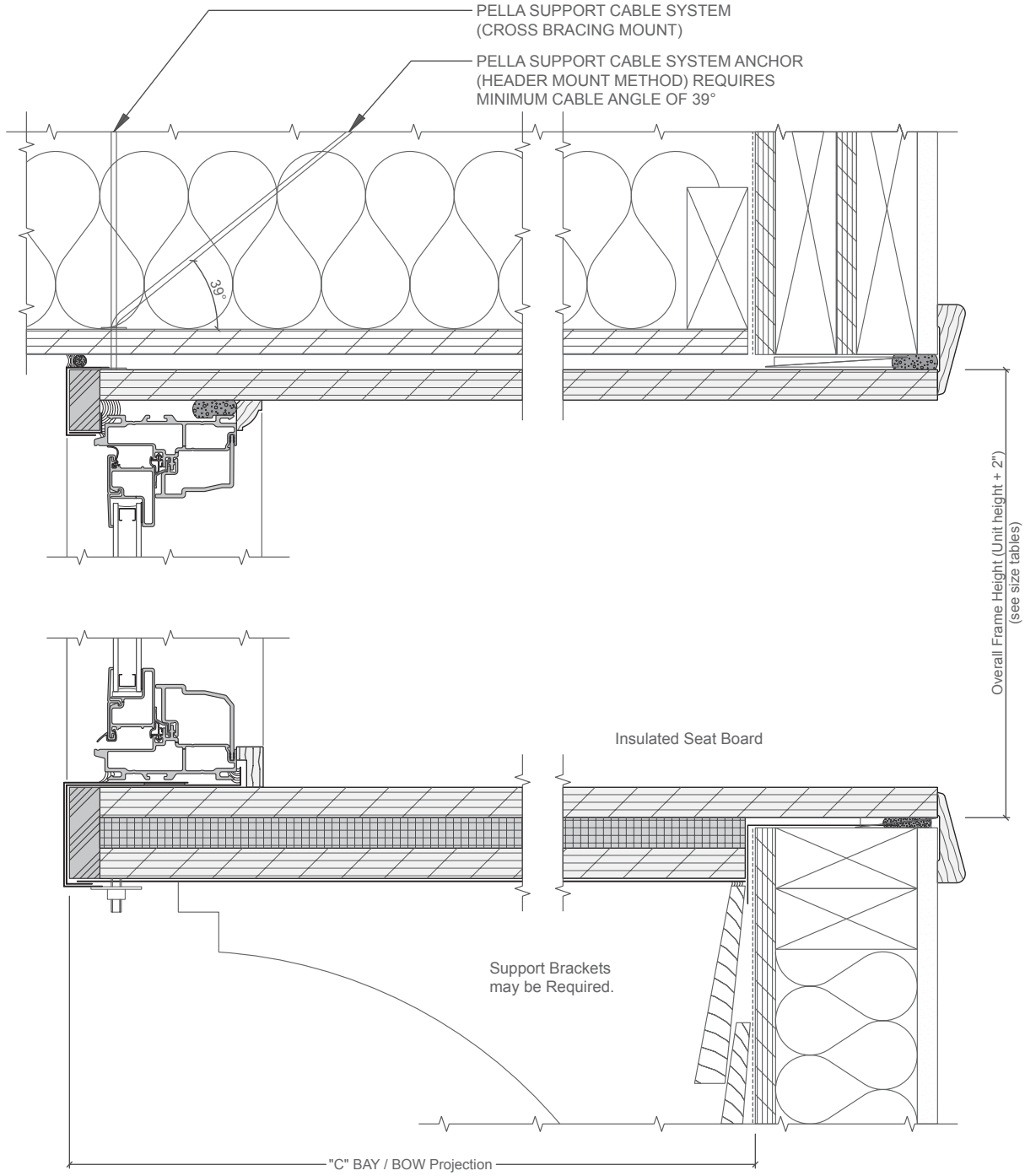
Scale 3" = 1' 0"

Maximum Jamb Depth = 10-3/8"



# Impervia® Bay/Bow Windows

## Installation Details - Casement Bow



Scale 3" = 1' 0"

The Bay/Bow support cables must be attached to structural members capable of supporting 1,300 lbs.

Knee braces are required in addition to the support cables if the structural members are not capable of supporting 1,300 lbs. Bay/Bow units are not designed to support roof structure.

Interior Head / Jamb / Sill stops are included with the bay.