



Pella's Rich Heritage

A promise reflected in every window.

In the small Dutch Community of Pella, Iowa in 1925, Pete and Lucille Kuyper invested in a newfangled invention – a window screen that rolled up and down like a shade. The couple went on to found a company based on the principles of traditional American values, integrity and the desire to enrich the homes and lives of others.

Today, Pella Corporation is still owned by the Kuyper family, and continues to be a leader in technology and product innovation.

In fact, we've been awarded more than 150 product and design patents. And the team at Pella is as committed as ever to continuing the company's proud heritage of building innovative windows and doors.



Project Examples

Bretton Woods Ski Resort Rosebrook Lodge
Bull Stockwell Allen Architects
Bretton Woods, NH

Pella® Reserve™ Contemporary, Commercial Outswing Doors



Photos: © J Michael Worthington Jr



Photos: © J Michael Worthington Jr

Project Examples

Westwood Hills Nature Center

HGA, RJM Construction

St. Louis Park, MN

Pella® Reserve™ Traditional Casement, Awning, Contemporary Fixed and Direct Set, Traditional Commercial Outswing Doors
Custom Bird Safe Glass, Certified Net-Zero Building

Photos: © Peter J. Sieger Architectural Photography



Scan the QR code to view case studies for projects using Pella windows and doors, or visit: <https://www.pella.com/professionals/commercial/projects/>



Photos: © Peter J. Sieger Architectural Photography

Project Examples

Integrated Health Sciences Center at University of Central Arkansas
Taggart Architects
Conway, AR

Pella® Reserve™ Monumental Hung, Simulated Double-Hung

Photos: © Ken West Photography





Photos: © Ken West Photography

Project Examples



Southern Living Custom Builder home
Lifestyle windows Pella® Lifestyle Series, Fixed, Double-Hung, Hinged Patio Door



Project Examples

CC Residence
Biloba Architecture
Charlotte, NC

Pella® Reserve™ Contemporary, Casement, Awning, Fixed and Direct Set, Hinged Patio Doors

Photos: © Tim Buchman Photography





Photos: © Tim Buchman Photography

Project Examples

Amberley House
Jose Garcia Design
Moreland Hills, OH

Pella® Reserve™ Contemporary, Casement, Fixed and Direct Set Products





Project Examples

Private Residence

Archi-Tech Associates, Inc.

Osterville, MA

Traditional Double-Hung, Casement, and In-Swing Patio Door

Photos: © Nat Rea Photography





Photos: © Nat Rea Photography

Project Examples

LoHi Residence
BOSS.architecture
Denver, CO

Contemporary Casement, Hinged Patio Door, Multi-Slide Patio Door,
and Fixed Frame Direct Set

Photos: © Justin Martin Photography





Photos: © Justin Martin Photography

Project Examples

Montpelier Transit Center
gbA Architecture and Planning
Montpelier, VT

Pella® Fixed Frame Direct Set and Pella® Reserve™ Out-Swing Commercial Doors

Photos: © Ryan Bent Photography @ryanbentphoto





Photos: © Ryan Bent Photography @ryanbentphoto

Project Examples

Hotel Emma
Roman and Williams
San Antonio, TX

Pella® Reserve™ Traditional
Monumental-Hung, Casement, Fixed Frame Direct Set
EnduraClad® Exterior: Black





Project Examples

River Birch House
Jose Garcia Design
Cincinnati, OH

Contemporary and Fixed Frame Direct Set Products
EnduraClad® Exterior: Black

Photos: © Ryan Kurtz Photography





Photos: © Ryan Kurtz Photography

Project Examples

Riverview Senior Living

Minneapolis, MN



Pella® Impervia® Sliding Windows



RIVERVIEW
APARTMENTS

5360
RIVERVIEW
ROAD

Project Examples

Sawyer Harbor Lookout
Mitch Wise Design, Inc.
Door County, WI

Pella® Impervia® Fixed Frame Direct Set, Casement and Awning
Pella® Reserve™ Contemporary Patio Doors

Photos: © Steinberger Photography, LLC





Photos: © Steinberger Photography, LLC

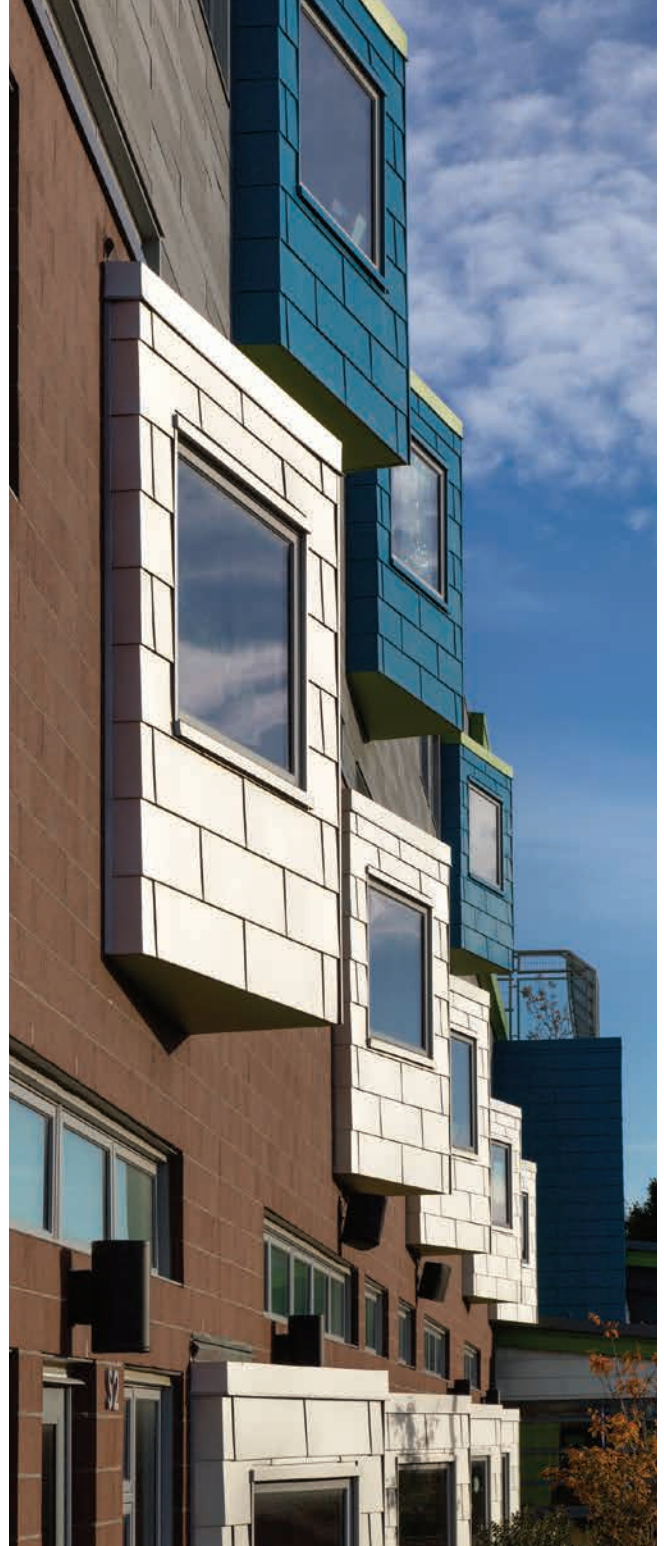
Project Examples

Jacobs Elementary School
Turowski 2 Architecture, Inc.
New Bedford, MA

Photos: © Ed Wonsek



Traditional Fixed Awning and Casement,
Fixed Frame Direct Set, Laminated Impact Glazing





Photos: © Ed Wonsek

Project Examples

Hyland Ski Chalet
Partners & Simey Architects
Bloomington, MN

Pella® Fixed Frame Direct Set - Rectangular and Trapezoid Shapes

Photos: © Brandon Stengel - www.farmkidstudios.com





Photos: © Brandon Stengel - www.farmkidstudios.com

Project Examples

Carlton Landing
Pittsburg County, OK

Photos: © David Tsay



Pella® Lifestyle Series Casement, Direct-Set



Photos: © David Tsay

Project Examples

Star Metals
Dwell Design Studio and Oppenheim Architecture
Atlanta, GA

Pella® Impervia® Fixed Frame Direct Set and Sliding Patio Door

Photos: © Raftermen





Photos: © Raftermen

Project Examples

Eastham Public Library
Oudens Ello Architecture
Eastham, MA

Traditional Fixed and Vent Awnings and Casements, Commercial Out-Swing Doors





Project Examples

Cougar Point Golf Course Clubhouse
Robert A.M. Stern Architects
Kiawah Island, SC

Traditional Impact-resistant, Double-hung, Simulated Double-hung, Fixed Casement with custom bottom rails

Photos: Clear Sky Images Commercial Photography





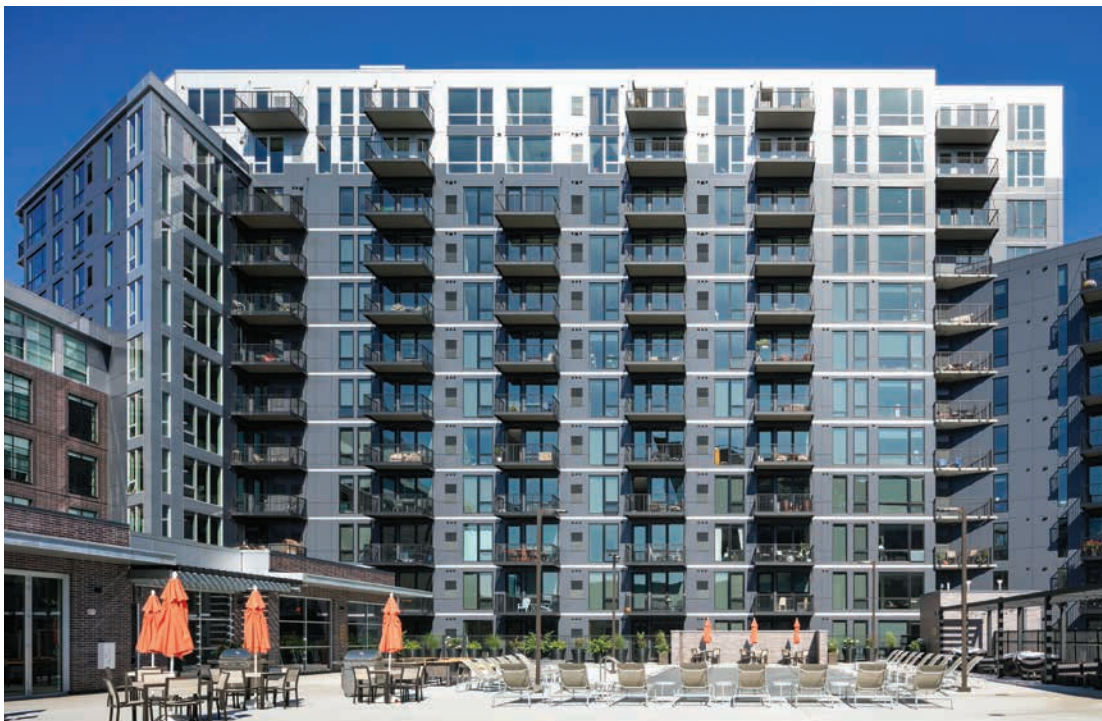
Photos: Clear Sky Images Commercial Photography

Project Examples

Ironclad / Moxy
Collage Architects
Minneapolis, MN

Pella® Impervia® Fixed Frame Direct Set and Awning

Photos: © Peter J. Sieger Architectural Photography





Photos: © Peter J. Sieger Architectural Photography

Project Examples

Evolution

Ezra Lee Design + Build

Orem, UT

Contemporary Casement, Awning, Fixed Frame Direct Set, Sliding Patio Door

Photos: ©Meagan Larsen Photography





Photos: © Meagan Larsen Photography