



Product Selection Guide

Size and Performance Data.....	HS-MSD-2
Features and Options.....	HS-MSD-3
Glazing Performance.....	HS-MSD-4
Grille Types.....	HS-MSD-6
Design Data	HS-MSD-7
Detailed Product Descriptions.....	HS-MSD-10
Unit Sections	HS-MSD-11

Document Navigation Tips:

Items listed in the table of contents above are active links that will take you to the corresponding page.
The Pella logo on each page is a link back to this table of contents.
Bookmarks are also included in this PDF document and are available as an additional navigation option.

The information published in this document is believed to be accurate at the time of publication. However, because we are constantly working to improve our products, specifications are subject to change without notice. Consult your local Pella representative for up-to-date product information.



Hurricane Shield Series Multi-Slide Door

Size and Performance Data

Sizes	
Standard Sizes ₁	S
Special Sizes Available Built on 1/32" Increments	O
Frames	
Block Frame	S
Non-Impact Performance	
Meets or Exceeds AAMA/WDMA/HVHZ Ratings ₂	R PG 65 - R PG 80
Air Infiltration ₃ (cfm/ft ² of frame @ 1.57 psf wind pressure)	≤0.30
Design Pressure	65 - 80
Forced Entry ₄	10
Maximum Operating Force (lb) (Initiate Motion / Maintain Motion)	25/13
Impact Performance	
Meets or Exceeds AAMA/WDMA/HVHZ Ratings ₂	R PG 50 - LC PG 80
Air Infiltration ₃ (cfm/ft ² of frame @ 1.57 psf wind pressure)	≤0.30
Design Pressure	50 - 80
Forced Entry ₄	10
Maximum Operating Force (lb) (Initiate Motion / Maintain Motion)	25/13

S = Standard; O = Optional; (—)

(1) See size charts in this section for available sizes.

(2) Published performance data is for single unit only. Pella® Hurricane Shield™ Series Multislide Doors do not have mulling capabilities. All products must be installed in separate openings.

(3) Published performance Data for air infiltration is determined by testing a minimum of four (4) products of NFRC model size. Testing is conducted in accordance with ASTM E283. Air infiltration ratings for products will differ by size. The performance data does not apply to combination assemblies unless notes. Actual product performance may vary for a number of reasons including installation and product care.

(4) The higher the level, the greater the product's ability to resist forced entry.

Performance with additional options may not be the same as Standard and Special size units. Please contact your local Pella representative for complete information.



Hurricane Shield Series Multi-Slide Door

Features and Options

Glazing	
Glazing Type	
Dual-pane insulating glass	S
Insulated Glass Options / Low-E Types	
AdvancedComfort Low-E	O
Turtle Glass	O
SunDefense™ Low-E	O
Glass Configuration	
Standard Insulating Glass	S
Non-Impact Laminated Glass	O
Impact Laminated Glass	O
Additional Glazing Options	
Tempered Glass	S
Obscure Glass ⁽¹⁾	O
Neat Glass	O
Bronze Tint	O
Gray Tint	O
Blue Tint	O
Gas Fill / High Altitude	
Argon	S
Interior/Exterior Color	
White Interior/White Exterior	S
White Interior/Bronze Exterior	O
Bronze Interior/Bronze Exterior	O
White Interior/Black Exterior	O

Grilles-Between-the-Glass	
Grille Profiles	
3/4" Contour	O
1" Contour	O
5/8" Flat	O
Grille Patterns	
Traditional	O
9-Lite Prairie	O
6-Lite Prairie	O
Custom – Equally Divided	O
Exterior Applied Grilles with Grilles-Between-the-Glass	
Grille Profiles	
7/8" Contour Applied with 1" Contour GBG	O
Grille Patterns	
Traditional	O
9-Lite Prairie	O
6-Lite Prairie	O
Custom - Equally Divided	O
Screen	
No Screen	S
InView™ Sliding Screen	O
Door Handle Finishes	
Black with Tumbturn	S
Keyed Lock	O
Additional Hardware	
Premium Roller	S

S = Standard; O = Optional

(1) Contact your local Pella sales representative for current offering.



Hurricane Shield Series Multi-Slide Door

Glazing Performance - Total Unit

Glass Thickness	Type of Glazing	NFRC Certified Product #	Glass (mm)		Gap Fill	Performance Values ₁				Shaded Areas Meet ENERGY STAR® Performance Criteria in Zones Shown					
			Ext. (mm)	Int. (mm)		U-Factor	SHGC	VLT	CR	U. S.				Canada ₂	
										Zone				ER	Zone
Vent - Multislide Door - Low-E Glazing										N	NC	SC	S	CA	
1"	SunDefense™ Low-E IG	K-275	6.35mm	6.35mm	Argon	.30-.31	0.2	0.44	57-59						
	with Grilles-Between-the-Glass					.30-.33	0.17	0.38	57-59						
1"	SunDefense™ Low-E IG - Impact Laminated	K-275	4.7625mm	4.7625mm	Argon	.31-.32	0.2	0.45	57-59						
	with Grilles-Between-the-Glass					.31-.32	0.17	0.39	57-59						
1"	SunDefense™ Low-E IG - Impact Laminated	K-275	4.7625mm	7.9375mm	Argon	0.32	0.2	0.43	55-58						
	with Grilles-Between-the-Glass					.38-.39	0.18	0.37	55						
1"	SunDefense™ Low-E IG - Impact Laminated	K-275	4.7625mm	11.1125mm	Argon	.32-.33	0.2	0.43	55-58						
	with Grilles-Between-the-Glass					.38-.40	0.18	.37-.38	51-55						
1"	Advanced Low-E IG	K-275	6.35mm	6.35mm	Argon	.31-.32	0.26	0.48	56-59						
	with Grilles-Between-the-Glass					.31-.33	0.23	0.41	56-59						
1"	Advanced Low-E IG - Impact Laminated	K-275	4.7625mm	4.7625mm	Argon	.31-.32	0.26	0.48	57-59						
	with Grilles-Between-the-Glass					.31-.32	0.23	0.42	57-59						
1"	Advanced Low-E IG - Impact Laminated	K-275	4.7625mm	7.9375mm	Argon	.32-.33	0.26	0.46	55-57						
	with Grilles-Between-the-Glass					.38-.39	0.23	0.4	54						
1"	Advanced Low-E IG - Impact Laminated	K-275	4.7625mm	11.1125mm	Argon	.32-.33	0.26	.46-.47	55-57						
	with Grilles-Between-the-Glass					.38-.41	0.23	.40-.41	50-54						
1"	Turtle Glass IG	K-275	6.35mm	6.35mm	Argon	0.31	0.13	0.26	56-59						
	with Grilles-Between-the-Glass					.31-.33	0.12	0.23	56-59						
1"	Turtle Glass IG - Impact Laminated	K-275	4.7625mm	4.7625mm	Argon	.31-.32	0.13	0.27	57-59						
	with Grilles-Between-the-Glass					.31-.32	0.12	0.23	57-59						
1"	Turtle Glass IG - Impact Laminated	K-275	4.7625mm	7.9375mm	Argon	.32-.33	0.13	0.26	55-57						
	with Grilles-Between-the-Glass					.38-.39	0.12	0.22	54						
1"	Turtle Glass IG - Impact Laminated	K-275	4.7625mm	11.1125mm	Argon	.32-.33	.13-.14	0.26	55-57						
	with Grilles-Between-the-Glass					.38-.40	0.12	.22-.23	51-54						

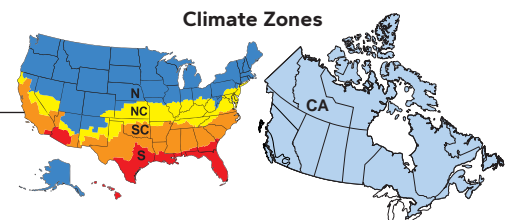
R-Value = 1/U-Factor
SHGC = Solar Heat Gain Coefficient
VLT % = Visible Light Transmission
CR = Condensation Resistance
ER = Canadian Energy Rating

(1) Glazing performance values are calculated based on NFRC 100, NFRC 200 and NFRC 500. ENERGY STAR® values are updated to 2023 (Version 7) criteria.

(2) The values shown are based on Canada's updated ENERGY STAR® 2020 initiative.

Based on unit size, some products will have improved glazing performance from what is shown.

See the Product Performance section for more detailed information or visit www.energystar.gov for Energy Star guidelines.





Hurricane Shield Series Multi-Slide Door

Glazing Performance - Total Unit

Glass Thickness	Type of Glazing	NFRC Certified Product #	Glass (mm)		Gap Fill	Performance Values ₁				Shaded Areas Meet ENERGY STAR® Performance Criteria in Zones Shown						
			Ext. (mm)	Int. (mm)		U-Factor	SHGC	VLT	CR	U. S.				Canada ₂		
										Zone	N	NC	SC	S	ER	CA
Vent - Multislide Door - Tinted Glazing										N	NC	SC	S	CA		
1"	Bronze IG	K-275	6.35mm	6.35mm	Argon	0.45	0.36	0.33	45-46							
	with Grilles-Between-the-Glass					.45-.46	0.32	0.29	45-46							
1"	Bronze IG - Impact Laminated	K-275	4.7625mm	4.7625mm	Argon	0.45	0.39	0.37	45-46							
	with Grilles-Between-the-Glass					0.45	0.35	0.32	45-46							
1"	Bronze IG - Impact Laminated	K-275	4.7625mm	7.9375mm	Argon	0.45	0.37	0.35	44-45							
	with Grilles-Between-the-Glass					0.49	0.33	0.31	44							
1"	Bronze IG - Impact Laminated	K-275	4.7625mm	11.1125mm	Argon	0.45	0.37	.35-.36	44-46							
	with Grilles-Between-the-Glass					.49-.50	0.33	0.31	42-44							
1"	Gray IG	K-275	6.35mm	6.35mm	Argon	0.45	0.33	0.28	45-46							
	with Grilles-Between-the-Glass					.45-.46	0.29	0.24	45-46							
1"	Gray IG - Impact Laminated	K-275	4.7625mm	4.7625mm	Argon	0.45	0.39	0.37	45-46							
	with Grilles-Between-the-Glass					0.45	0.35	0.32	45-46							
1"	Gray IG - Impact Laminated	K-275	4.7625mm	7.9375mm	Argon	0.45	0.34	0.31	44-45							
	with Grilles-Between-the-Glass					0.49	0.3	0.27	44							
1"	Gray IG - Impact Laminated	K-275	4.7625mm	11.1125mm	Argon	0.45	0.34	0.31	44-46							
	with Grilles-Between-the-Glass					.49-.50	0.3	0.27	42-44							
1"	Blue IG															
1"	Blue IG															
1"	Blue IG															

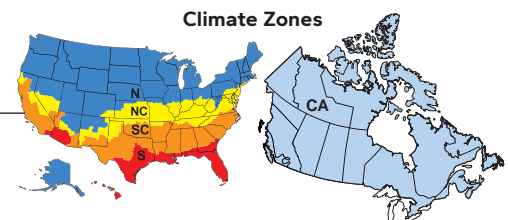
R-Value = 1/U-Factor
 SHGC = Solar Heat Gain Coefficient
 VLT % = Visible Light Transmission
 CR = Condensation Resistance
 ER = Canadian Energy Rating

(1) Glazing performance values are calculated based on NFRC 100, NFRC 200 and NFRC 500. ENERGY STAR® values are updated to 2023 (Version 7) criteria.

(2) The values shown are based on Canada's updated ENERGY STAR® 2020 initiative.

Based on unit size, some products will have improved glazing performance from what is shown.

See the Product Performance section for more detailed information or visit www.energystar.gov for Energy Star guidelines.

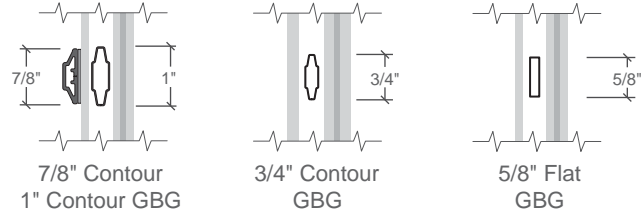




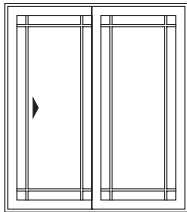
Grilles

Grille Profiles

Grilles-Between-the-Glass



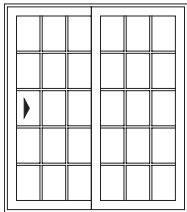
Grille Patterns



9-Lite
Prairie

9-Lite Prairie

- Approximately 6" from edge of panel to center of bar.



Traditional

Traditional

- Specify number of lites in each panel—wide and high.
- Grille bars must be equally divided on visible glass.
- Minimum 6" x 6" center-to-center.



Hurricane Shield Series Multi-Slide Door

Design Data - Stacking Panels

					Frame Width		Frame Height		Panel Width	
2-Panel	Number of Panels	Number of Tracks	Track Depth	STACKING PANEL CONFIGURATION	Min	Max	Min	Max	Min	Max
	2	2	5.950" 6.825" (w/screen)	XO, OX, XX	46.65625"	95.5"	36"	120"	24.5"	48.9375"
3-Panel	3	2	5.950" 6.825" (w/screen)	2XO, O2X	46.65625"	119.5"	36"	96"	24.5"	60.9375"
					71.78125"	145.0625"	36"	120"	24.5"	48.9375"
	3	3	8.325" 9.2" (w/1-track screen) 12.291" (w/2-track screen)	OXO, O2X, 2XO, 3X	71.78125"	181.0625"	36"	96"	24.5"	60.9375"
					67.21875"	140.5"	36"	120"	24.5"	48.9375"
4-Panel	4	2	5.950" 6.825" (w/screen)	4X	67.21875"	176.5"	36"	96"	24.5"	60.9375"
					92.34375"	190.0625"	36"	120"	24.5"	48.9375"
	4	4	10.7" 11.575" (w/1-track screen) 14.666" (w/2-track screen) 16.319" (w/3-track screen)	OX-XO, O3X, 3XO, 4X	92.34375"	238.0625"	36"	96"	24.5"	60.9375"
					87.75"	185.46875"	36"	120"	24.5"	48.9375"
6-panel	6	3	8.325" 9.2" (w/1-track screen) 12.291" (w/2-track screen)	O2X-2XO, 6X	87.75"	233.46875"	36"	96"	24.5"	60.9375"
					133.40625"	280"	36"	120"	24.5"	48.9375"
8-Panel	8	4	10.7" 11.575" (w/1-track screen) 14.666" (w/2-track screen) 16.319" (w/3-track screen)	O3X-3XO, 8X	133.40625"	352"	36"	96"	24.5"	60.9375"
					174.5"	369.96875"	36"	120"	24.5"	48.9375"
					174.5"	465.96875"	36"	96"	24.5"	60.9375"

X = Venting, O = Fixed. All dimensions are in inches.

Custom sized units in 1/8" increments.

Doors are viewed from the exterior.

Contact your local sales representative for more information.



Hurricane Shield Series Multi-Slide Door

Design Data - Pocketing Panels

					Frame Width		Frame Height		Panel Width		Pocket Width	
	Number of Panels	Number of Tracks	Track Depth	POCKETING PANEL CONFIGURATION	Min	Max	Min	Max	Min	Max	Min	Max
1-Panel	1	2	5.950"	XP, XP	50.75"	99.59375"	36"	120"	24.5"	48.9375"	29.5"	53.9375"
					50.75"	123.59375"	36"	96"	24.5"	60.9375"	29.5"	65.9375"
2-Panel	2	2	5.950"	P2X, X2P	70.375"	143.65625"	36"	120"	24.5"	48.9375"	28.59375"	53"
					70.375"	179.65625"	36"	96"	24.5"	60.9375"	28.59375"	65"
	2	2	5.950"	P2XP	98.65625"	196.375"	36"	120"	24.5"	48.9375"	28.59375" (x2)	48.9375" (x2)
					98.65625"	244.375"	36"	96"	24.5"	60.9375"	28.59375" (x2)	65" (x2)
3-Panel	3	3	8.325"	P3X, 3XP	93.8125"	191.53125"	36"	120"	24.5"	48.9375"	31.5"	55.90625"
					93.8125"	239.53125"	36"	96"	24.5"	60.9375"	31.5"	67.90625"
4-Panel	4	2	5.950"	P4XP	139.71875"	286.3125"	36"	120"	24.5"	48.9375"	28.59375" (x2)	53" (x2)
					139.71875"	358.3125"	36"	96"	24.5"	60.9375"	28.59375" (x2)	65" (x2)
	4	4	10.7"	P4X, 4XP, P2X-2XP	111.4375"	233.59375"	36"	120"	24.5"	48.9375"	28.59375"	53"
					111.4375"	293.59375"	36"	96"	24.5"	60.9375"	28.59375"	65"
6-panel	6	3	8.325"	P3X-3XP	180.8125"	270.25"	36"	120"	24.5"	48.9375"	28.59375" (x2)	53" (x2)
					180.8125"	472.25"	36"	96"	24.5"	60.9375"	28.59375" (x2)	65" (x2)
8-Panel	8	4	10.7"	P4X-4XP	215.6875"	383.59375"	36"	120"	24.5"	48.9375"	25.5" (x2)	49.90625" (x2)
					215.6875"	580.03125"	36"	96"	24.5"	60.9375"	25.5" (x2)	61.90625" (x2)

X = Venting, O = Fixed. All dimensions are in inches.

Those noted as NC are not AAMA/WDMA performance certified.

Custom sized units in 1/8" increments.

Doors are viewed from the exterior.

Contact your local Pella sales representative for more information.



Hurricane Shield Series Multi-Slide Door

Sizes and Configurations - Panels

	Stacking: One Way (minimum 2 Panels)	Stacking: Bi-Parting	1 Pocket: One Way	2 Pocket: Bi-Parting
Frame Width	Starting Reference		Starting Reference	
Rough Opening Width	FW + 0.5		FW + 0.5	
Panel Width	$(FW + (TP - 1) \times (PO - 2 \times 2.1280)) \div TP$	$(FW + (TP - 2) \times (PO - 2 \times 2.1280 - 1.8800)) \div TP$	$(FW + (TP - 1) \times (PO - 2.1280 - PPWD - 2.5770)) \div (TP + 1)$	$(FW + (TP - 2) \times (PO - 1.8800 - 2 \times PPWD - 2 \times 2.5770)) \div (TP + 2)$
Pocket to Panel Width Difference	n/a		4.052 (1 Panel) 3.1955 (2-8 Panel)	4.052 (2 Panel) 3.1955 (4-10 Panel)
Frame Pocket Depth	n/a		PW + PPWD	PW + PPWD
Rough Opening Pocket Depth	n/a		FPD + 0.500	
Overall Configuration Width of Panels	FW + 1		ROW - RO Pocket Depth	ROW - RO Pocket Depth x 2
Frame Height	Starting Reference		Starting Reference	
Rough Opening Height/ DLO Height	FH + 0.25		FH + 0.25	
Finished Pocket Width	n/a		OTD + 0.330	OTD + 0.330
Overall Track Depth (Frame Depth)	# Tracks x 2.75 + 0.42	# Tracks x 2.75 + 0.42	# Tracks x 2.75 + 0.42	# Tracks x 2.75 + 0.42

* with finished floor installed correctly between the sill tracks

Key

FW= Frame Width	ROW= Rough Opening Width	VGW=Visible Glass Width	MLGW=Movable Lite Glass Width
FH= Frame Height	DLO=Daylight Opening Width	VGH=Visible Glass Height	MLGH=Movable Lite Glass Height
TP= Total # of panels	OTD = Overall Track Depth	AGW=Actual Glass Width	PO = Panel Overlap
PW= Panel Width	PPWD = Pocket to Panel Width Difference	AGH=Actual Glass Height	FPD = Frame Pocket Depth
PH=Panel Height			



Hurricane Shield Series Multi-Slide Door

Detailed Product Description

Frame

- Overall frame depth: 6".
- Frame members are mitered knock-down. Sill is fitted with weeps.
- Frame: Block frame 6" wall depth.
- Interior and exterior frame surfaces are extruded rigid PVC.

Door panels

- Door Panel consists of extruded rigid PVC.
- Panel members are mitered and heat-fused to provide a fully welded corner assembly.
- Vent panel is fully operable for ventilation.
- Vent panels have two adjustable rollers, set on an extruded aluminum track.
- Contains sealed insulating glass.

Weatherstripping

- Fin-type pile around perimeter of panels.

Glazing System

- Quality fully-tempered float glass complying with ASTM C 1036.
- Exterior face-glazed sealed insulating glass.
- Dual-Pane insulating glass with argon [Advanced Low-E coated] [Turtle Glass] [SunDefense™ Low-E coated [Neat, SunDefense], [Obscure, SunDefense] [Obscure] [Bronze] [Gray] [Blue].

Interior / Exterior

- Frame and panel members are White with integral color extruded throughout the profiles, consisting of a solar reflective coating exceeding AAMA 613 test requirements.
- All exposed PVC surfaces are smooth, glossy and uniform in appearance.

Hardware

- Interior handle and thumblock; finish is [White].
- Exterior handle finish is Black.
- Keylock with K-keyway cylinder. Finish is [Chrome].
- All fasteners are a corrosion-resistant material compatible with PVC.
- Multi-point lock, [stainless steel].
- Door rollers are adjustable, permanently-sealed, [corrosion resistant stainless steel, ball bearing rollers].

Screen

- Full-size Fiberglass sliding screen with black vinyl coated 18/18 mesh fiberglass screen cloth complying with ASTM D 3656 and SMA 1201 set in an extruded aluminum frame.
- Supplied with four self-adjustable rollers, latch and latch handle.
- Frame of screen matches exterior frame color.

Optional Products

Grilles

- Grilles-Between-the-Glass
 - Insulating glass contains [3/4"] [1"] contoured or 5/8" flat aluminum grilles permanently installed between two panes of glass.
 - Patterns are [Traditional] [9-Lite Prairie].
 - Grille color matches frame finish.

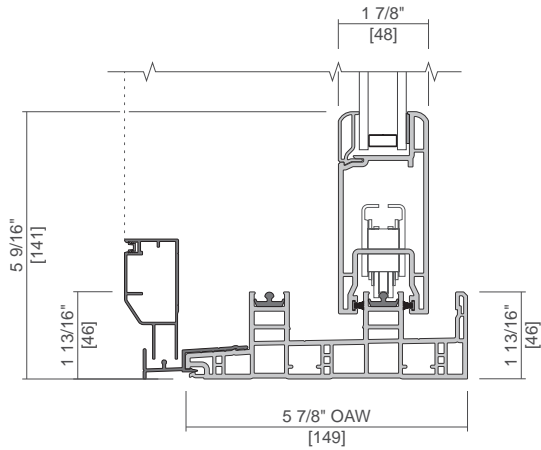
1) Only 5/8" flat grilles are available in two-tone finishes.



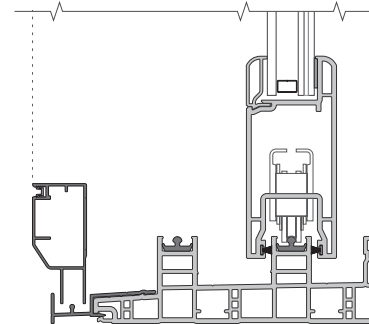
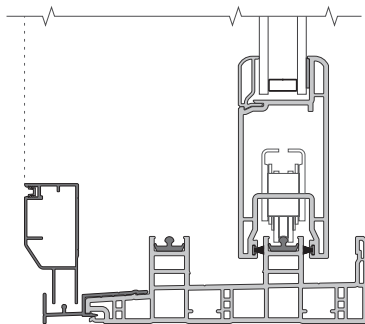
Hurricane Shield Series Multi-Slide Door

Unit Sections

NEW CONSTRUCTION/REPLACEMENT FRAME Block Frame



GLAZING OPTIONS

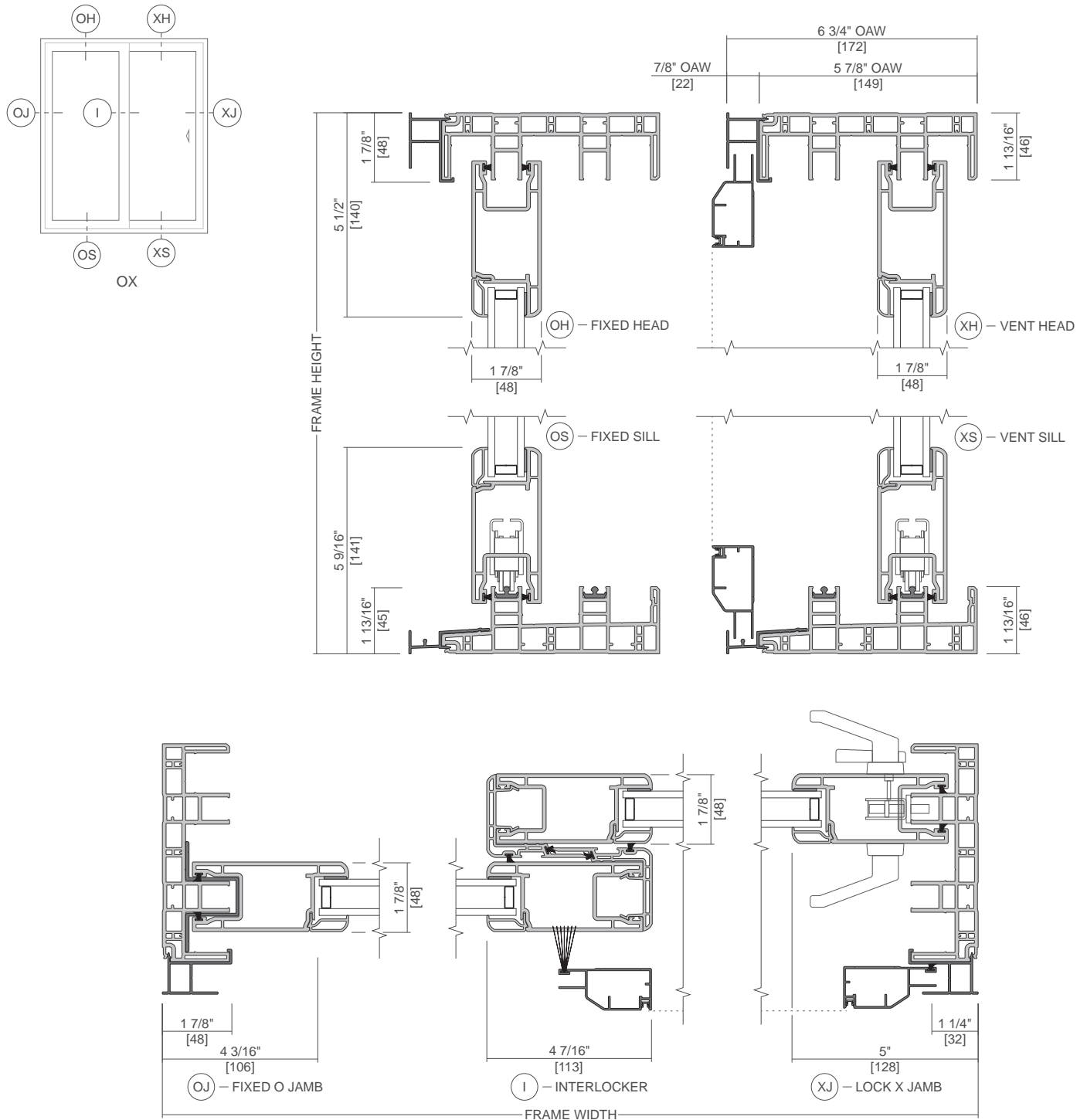


Scale 3" = 1' 0"
All dimensions are approximate.



Hurricane Shield Series Multi-Slide Door

Unit Sections - Stacking



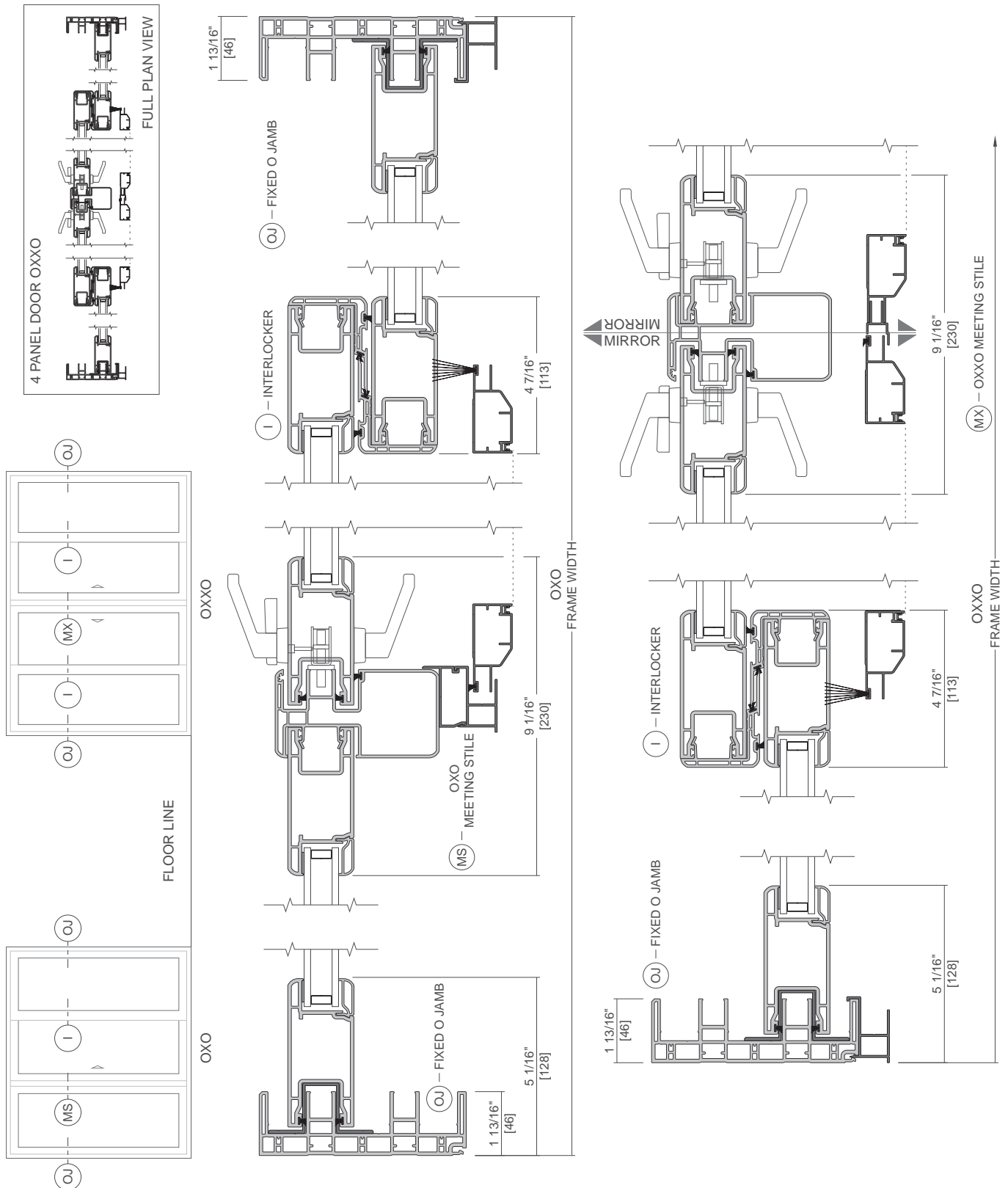
Scale 3" = 1' 0"

All dimensions are approximate.



Hurricane Shield Series Multi-Slide Door

Unit Sections - Stacking



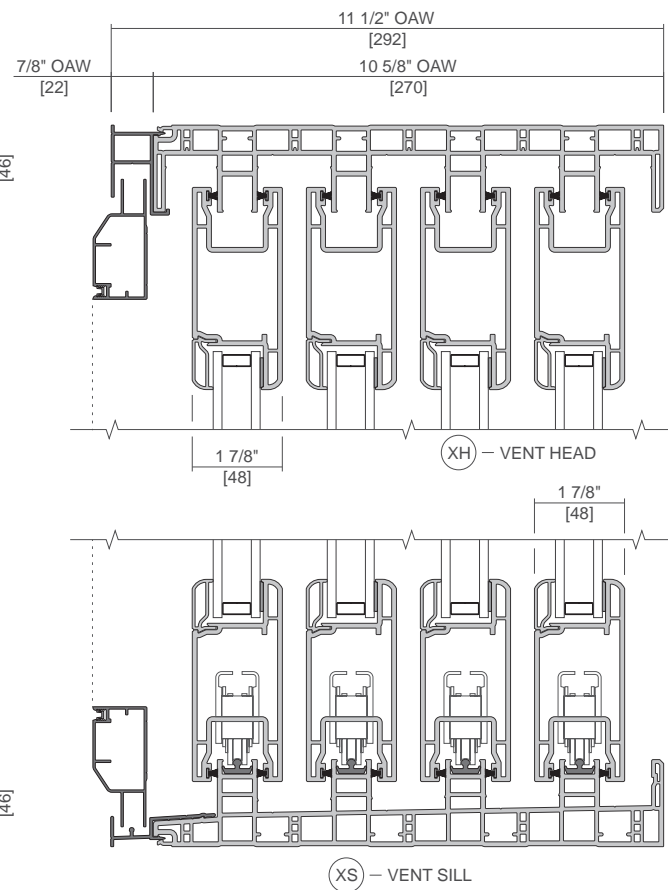
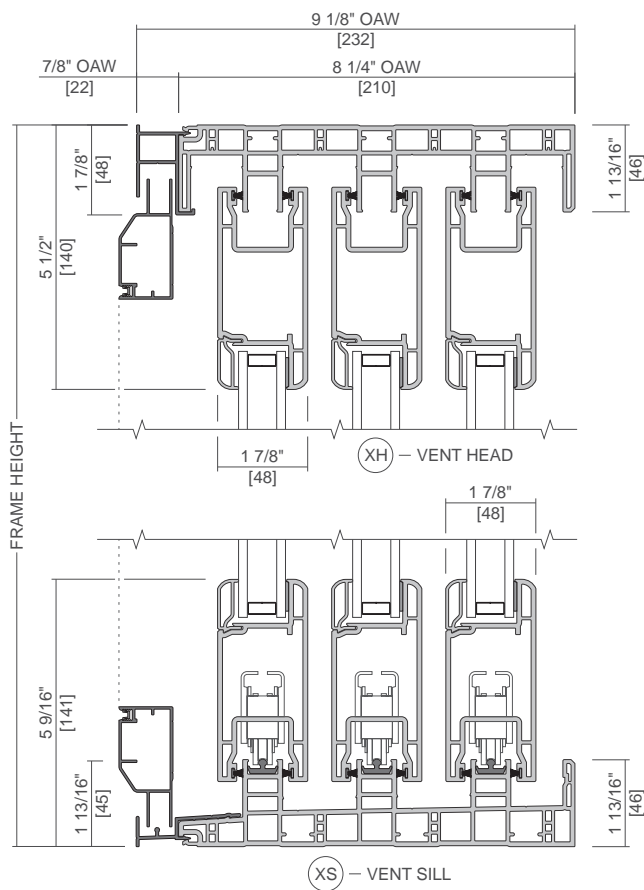
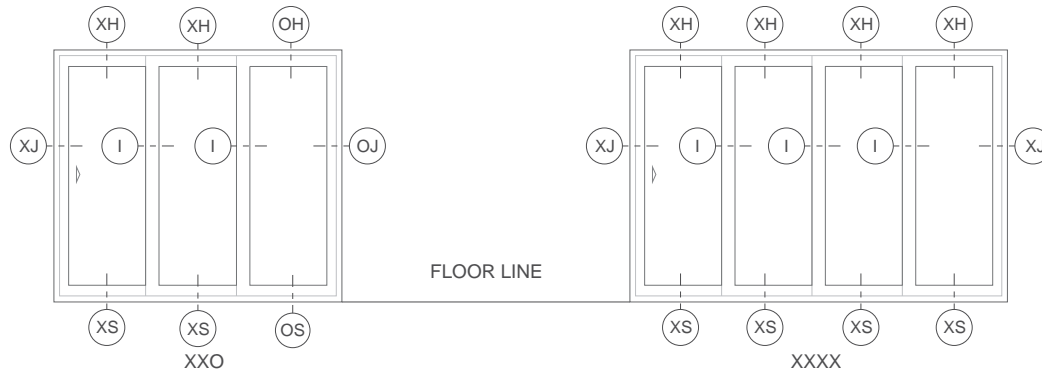
Scale 3" = 1' 0"

All dimensions are approximate.

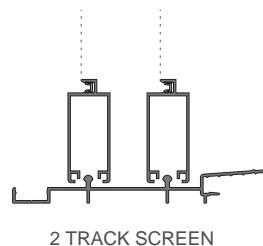


Hurricane Shield Series Multi-Slide Door

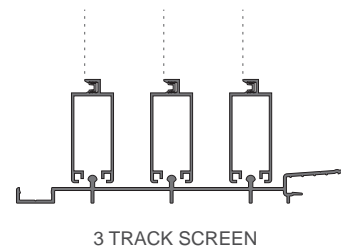
Unit Sections - Stacking



OTHER SCREEN TRACK OPTIONS



2 TRACK SCREEN



3 TRACK SCREEN

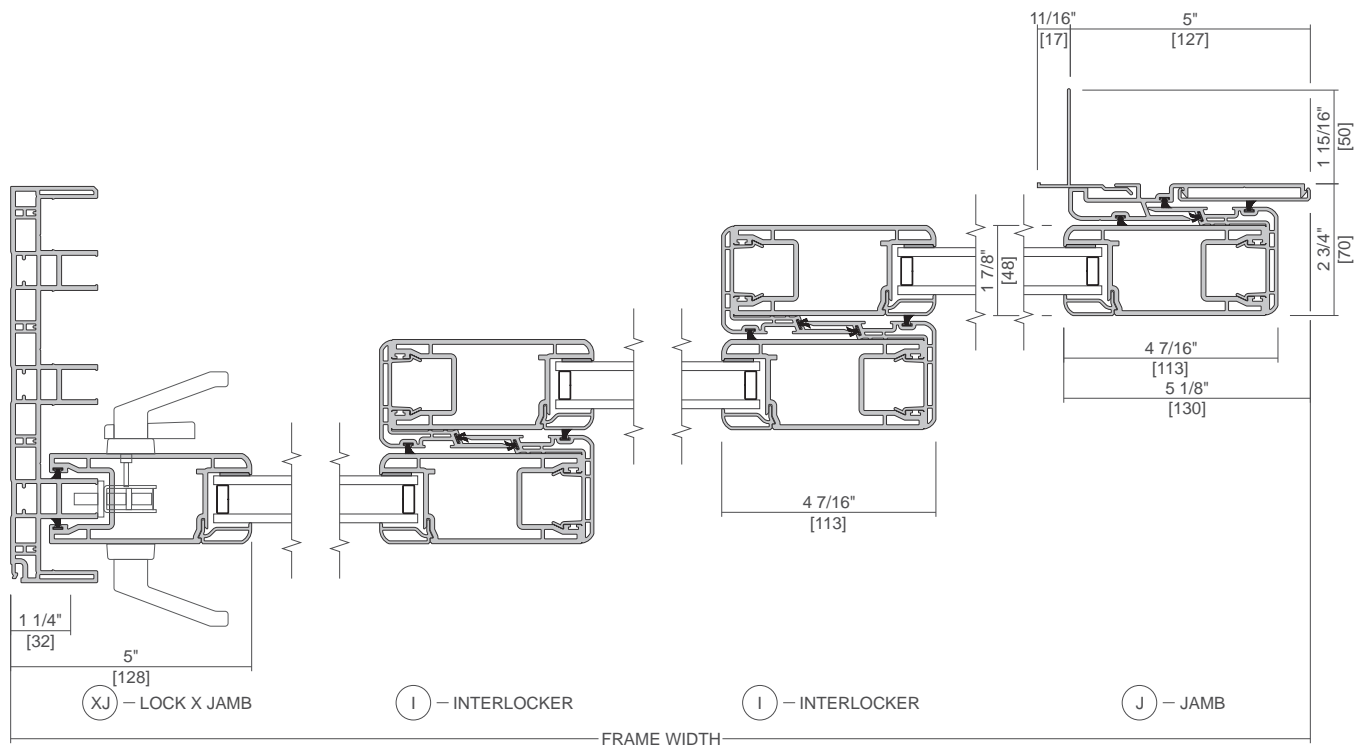
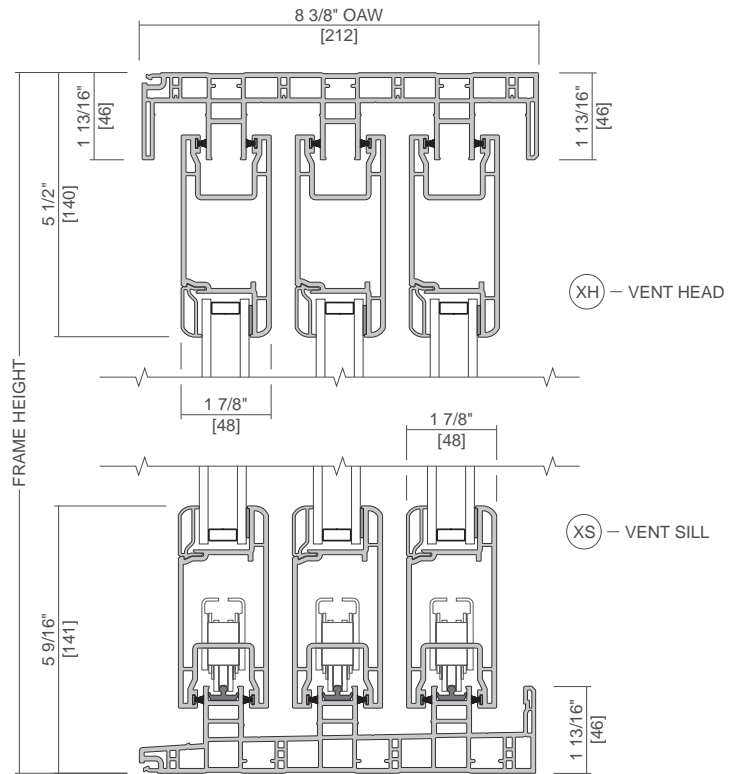
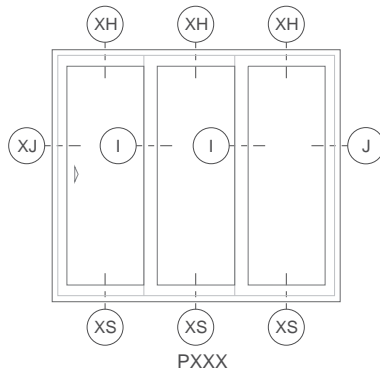
Scale 3" = 1' 0"

All dimensions are approximate.



Hurricane Shield Series Multi-Slide Door

Unit Sections - Pocket



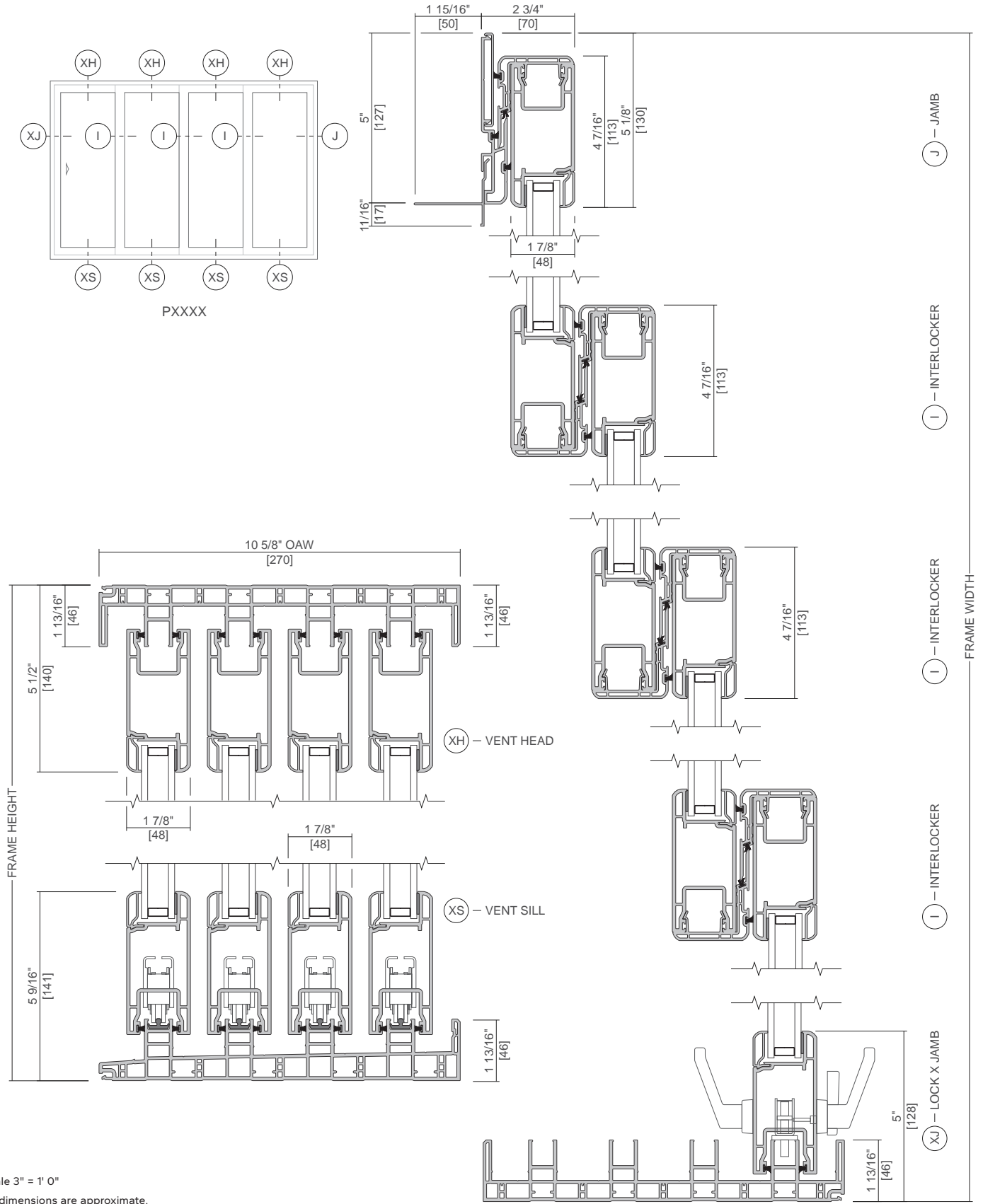
Scale 3" = 1' 0"

All dimensions are approximate.



Hurricane Shield Series Multi-Slide Door

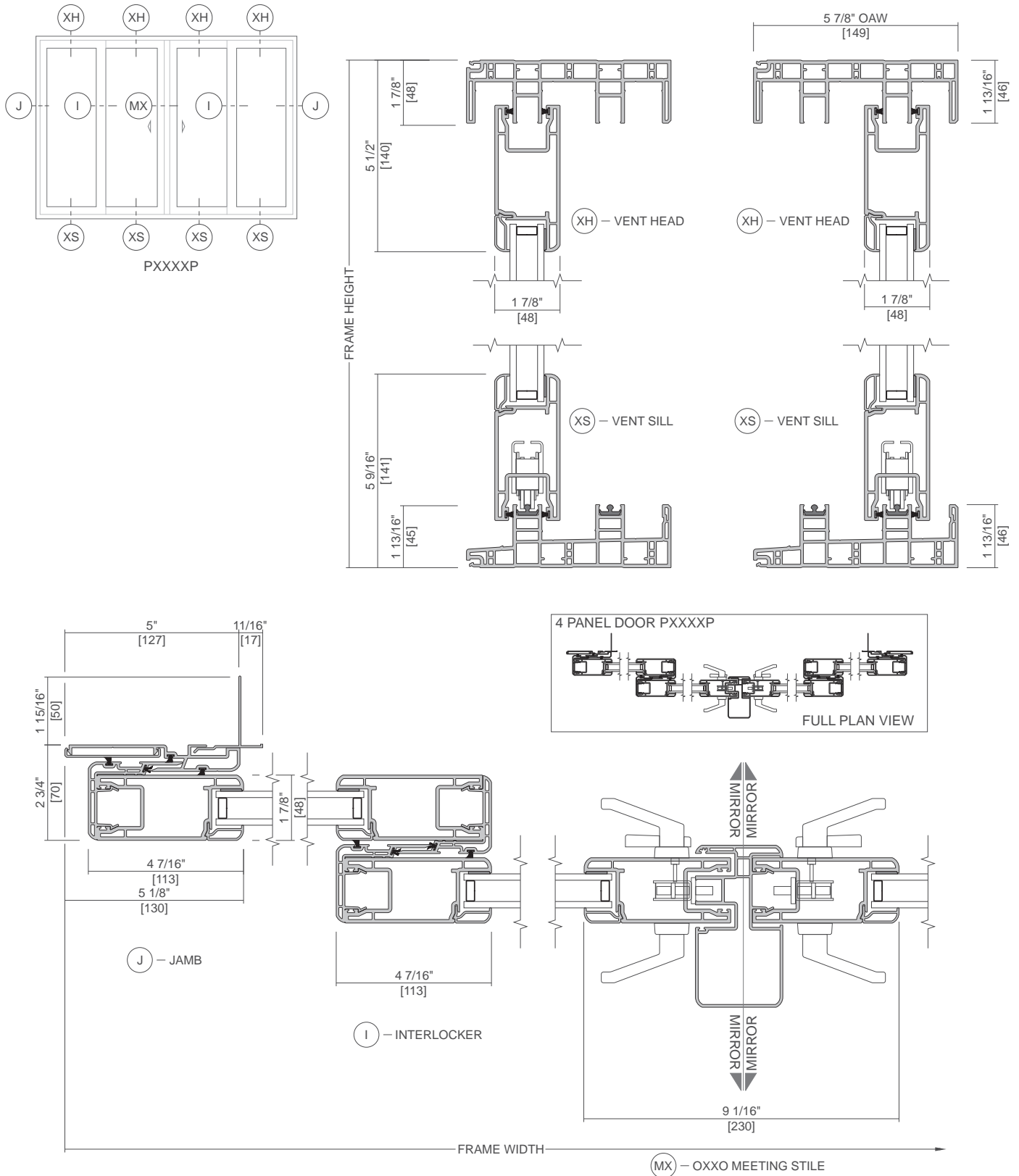
Unit Sections - Pocket





Hurricane Shield Series Multi-Slide Door

Unit Sections - Pocket



Scale 3" = 1' 0"

All dimensions are approximate.