



Product Selection Guide

Size and Performance Data ..... V-BB-2  
Features and Options ..... V-BB-2

Replacement Bay

Size Tables ..... V-BB-3  
Unit Sections ..... V-BB-4

Double-Hung Bay

Size Tables ..... V-BB-7  
Double-Hung Unit Sections ..... V-BB-9

**Supporting documents for this product:**

CAD cross sections (requires appropriate CAD software to read and use):

[https://media.pella.com/professional/adm/Vinyl250/V250-Bay-Details\\_D.dwg?utm\\_source=pdfdoc](https://media.pella.com/professional/adm/Vinyl250/V250-Bay-Details_D.dwg?utm_source=pdfdoc)

---

The information published in this document is believed to be accurate at the time of publication. However, because we are constantly working to improve our products, specifications are subject to change without notice. Consult your local Pella representative for up-to-date product information.

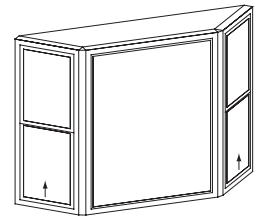


# 250 Series Bay - Bow

## Features and Options

### Size and Performance Data

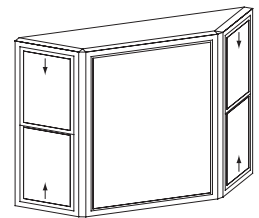
	Replacement Frame	New Construction Frame
<b>Sizes</b>		
Standard and Special Sizes	●	●
<b>Product Type</b>		
Double-Hung Bay—45 degrees	●	●
Single-Hung Bay—45 degrees	●	●
Casement Bay—45 degrees	●	●
Casement Bow—3 wide (LFR)	●	●
Casement Bow—4 wide (LFFR)	●	●
Casement Bow—5 wide (LFFFR)	●	●



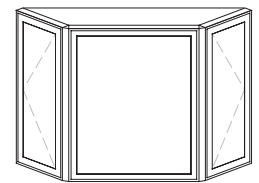
Single-Hung Bay

### Features and Options

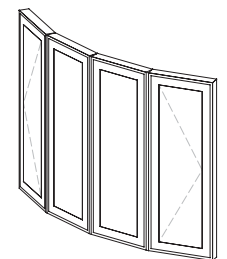
Feature	Availability
<b>Glazing (insulating glass)</b>	
<b>Glazing Type</b>	
Dual-pane insulating glass	S
Triple-pane insulating glass	O
<b>Insulated Glass Options / Low-E Types</b>	
Advanced Low-E	S
NaturalSun Low-E	O
SunDefense™ Low-E <sub>1</sub>	O
<b>Additional Glazing Options</b>	
Annealed glass	S
Tempered glass	O
Bronze-tinted Advanced Low-E <sub>1</sub>	O
Obscure glass <sub>2</sub>	O
<b>Gas Fill / High Altitude</b>	
Argon	S
High altitude	O
High altitude with argon <sub>1</sub>	O
<b>Interior / Exterior Color</b>	
White Interior/White Exterior	S
Almond Interior/Almond Exterior	O
<b>Interior options</b>	
Unfinished birch seatboard	S
Unfinished birch headboard	S
<b>Grilles</b>	
<b>Grilles-Between-the-Glass</b>	
3/4" Contour	O
5/8" flat	O
Grille Patterns: Traditional, Prairie, Top Row, Custom - Equally Divided	O



Double-Hung Bay



Casement Bay



Casement Bow

S = Standard; O = Optional

(1) Not available with triple-pane glazing.

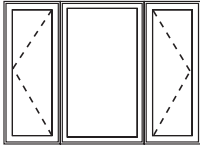
(2) Contact your local Pella sales representative for current offering.

Refer to the appropriate Complete Product Information documents for complete window unit features.

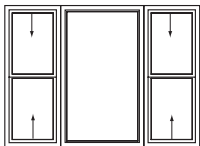


## 250 Series Bay - Bow

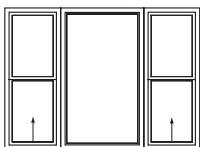
### Size Tables - Replacement Bay



Casement	Minimum	Maximum
Bay Frame Height	35-1/2" (901)	59-1/2" (1 511)
Bay Frame Width	59-1/2" (1 816)	95-1/2" (2 426)



Double-hung	Minimum	Maximum
Bay Frame Height	35-1/2" (901)	59-1/2" (1 511)
Bay Frame Width	71-1/2" (1 816)	95-1/2" (2 426)



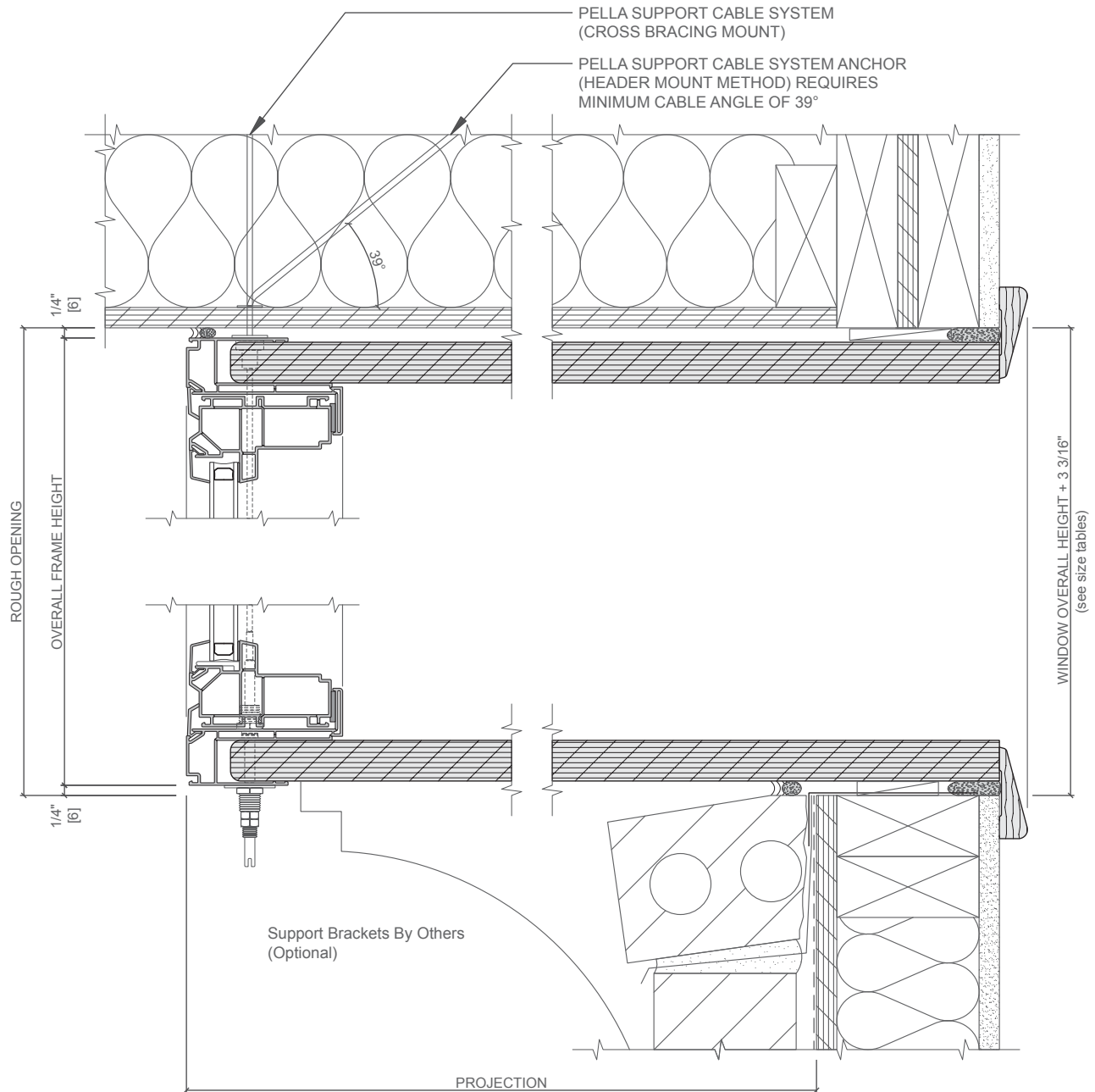
Single-hung	Minimum	Maximum
Bay Frame Height	35-1/2" (901)	59-1/2" (1 511)
Bay Frame Width	71-1/2" (1 816)	95-1/2" (2 426)

- Bay window combinations are not AAMA/WDMA performance rated.
- For center unit frame width other than those shown:
  - > 47": Add difference between 47" and greater frame width to overall width and rough opening width dimensions.
  - < 47": Subtract difference between 47" and smaller frame width overall width and rough opening width from dimensions.
- Dimensioning points are shown in details on following pages.
- Overall projection is sheathing to face of bay.
- Specify height of window units to be used in bay.



# 250 Series Bay - Bow

## Unit Sections - Replacement Bay

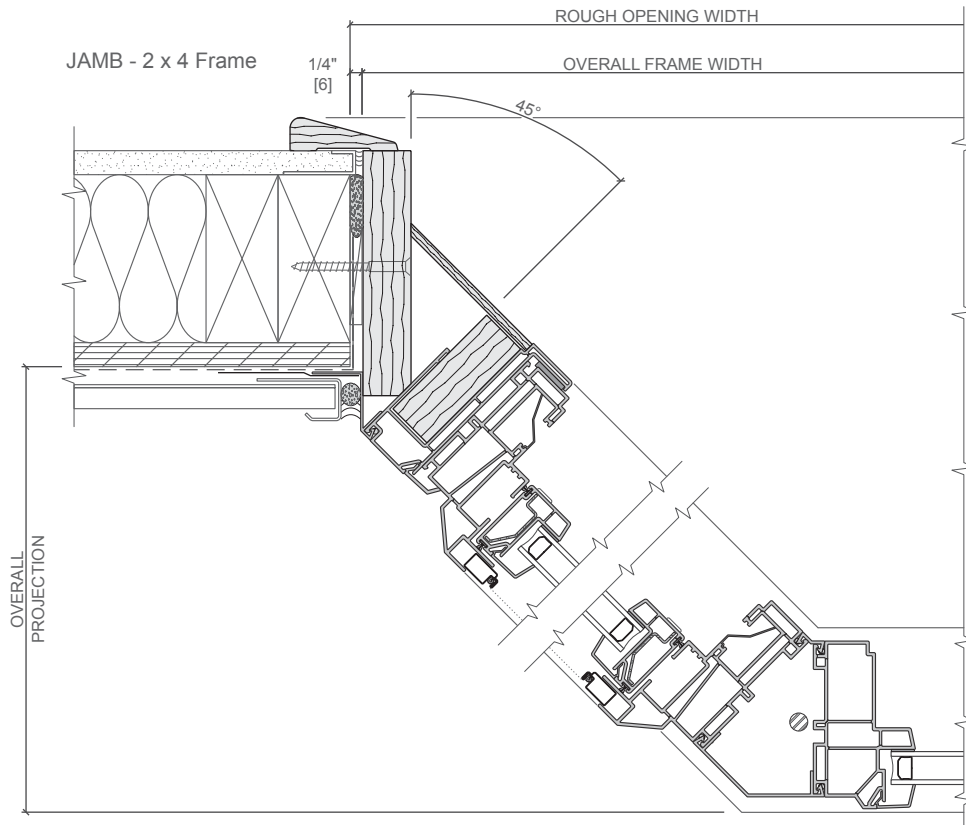
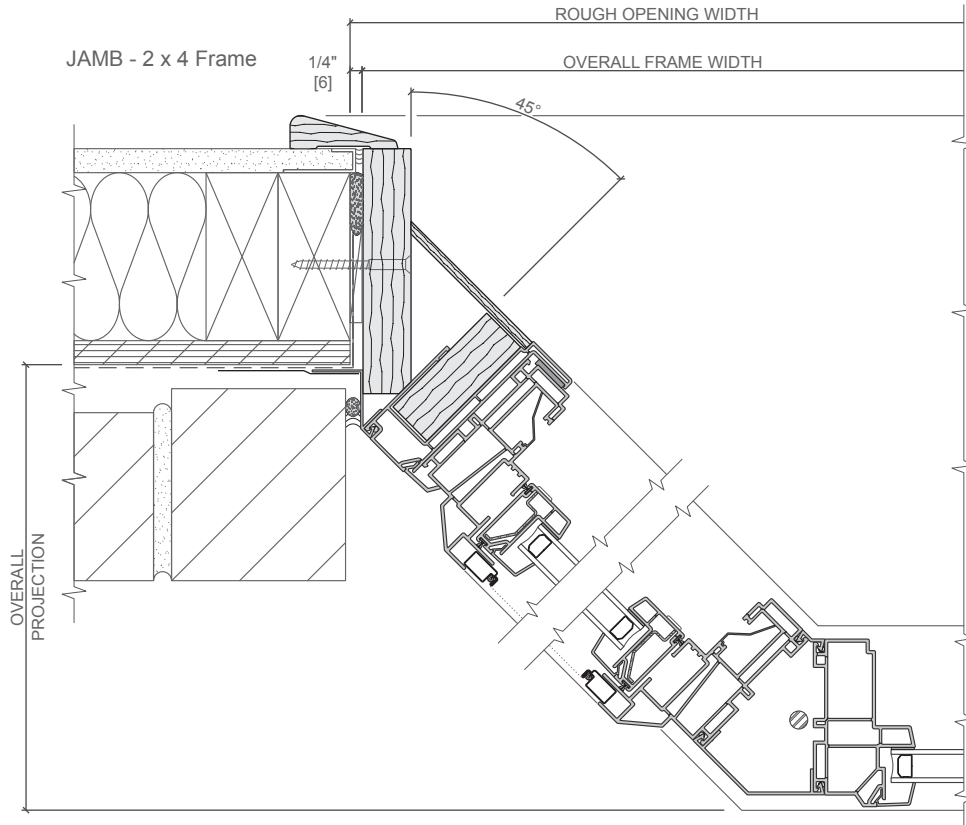


Scale 3" = 1' 0"  
All dimensions are approximate.



# 250 Series Bay - Bow

## Unit Sections - Replacement Bay



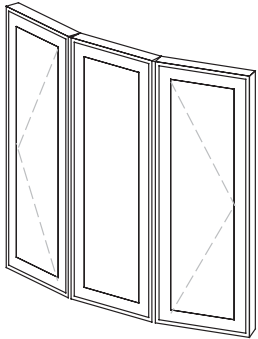
Scale 3" = 1' 0"  
All dimensions are approximate.



# 250 Series Bay - Bow

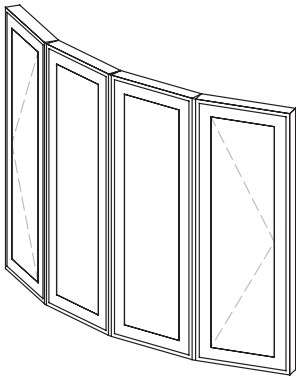
## Size Tables - Casement Bow

Projection: (Overall Unit Width x 0.089) + 1.368



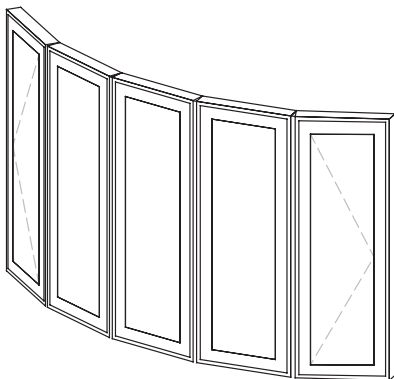
4-Wide Bow	Minimum	Maximum
Bay Frame Height	47-1/2" (1 206)	59-1/2" (1 511)
Bay Frame Width	71-1/2" (1 816)	95-1/2" (2 426)

Projection: (Overall Unit Width x 0.134) + 1.404



5-Wide Bow	Minimum	Maximum
Bay Frame Height	47-1/2" (1 206)	59-1/2" (1 511)
Bay Frame Width	83-1/2" (2 120)	107-1/2" (2 730)

Projection: (Overall Unit Width x 0.163) + 1.565

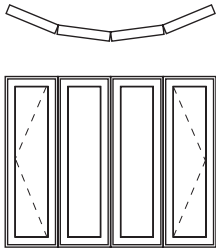


Scale 3" = 1' 0"  
All dimensions are approximate.



## 250 Series Bay - Bow

### Size Tables - Casement Bow

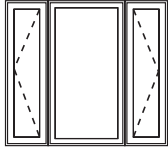


15° Bow— Left-Fix-Fix-Right Configuration (4 Unit Casement Bow)					
Call Out	Rough Opening		Projection	Center Unit Frame Size	
	(Inches)	(Inches)		(Inches)	(Inches)
6-0/3-0	72	38-15/16	19-7/8	34-11/16	35-1/2
7-0/3-0	84	38-15/16	19-7/8	46-11/16	35-1/2
8-0/3-0	96	38-15/16	19-7/8	58-11/16	35-1/2
6-0/4-0	72	50-15/16	19-7/8	34-11/16	47-1/2
7-0/4-0	84	50-15/16	19-7/8	46-11/16	47-1/2
8-0/4-0	96	50-15/16	19-7/8	58-11/16	47-1/2
6-0/5-0	72	62-15/16	19-7/8	34-11/16	59-1/2
7-0/5-0	84	62-15/16	19-7/8	46-11/16	59-1/2
8-0/5-0	96	62-15/16	19-7/8	58-11/16	59-1/2



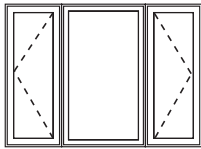
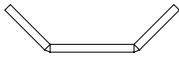
# 250 Series Bay - Bow

## Size Tables - New Construction Bay

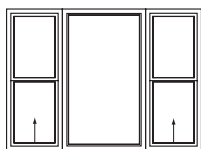
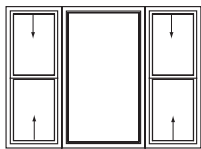
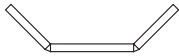


### 45° Bay—18" Casement Flankers

Call Out	Rough Opening		Projection	Center Unit Frame Size	
	Width (Inches)	Height (Inches)		Width (Inches)	Height (Inches)
5-0/3-0	60	38-15/16	15-5/8	30-15/16	35-1/2
6-0/3-0	72	38-15/16	15-5/8	42-15/16	35-1/2
7-0/3-0	84	38-15/16	15-5/8	54-15/16	35-1/2
5-0/4-0	60	50-15/16	15-5/8	30-15/16	47-1/2
6-0/4-0	72	50-15/16	15-5/8	42-15/16	47-1/2
7-0/4-0	84	50-15/16	15-5/8	54-15/16	47-1/2
5-0/5-0	60	62-15/16	15-5/8	30-15/16	59-1/2
6-0/5-0	72	62-15/16	15-5/8	42-15/16	59-1/2
7-0/5-0	84	62-15/16	15-5/8	54-15/16	59-1/2



East and West Regions

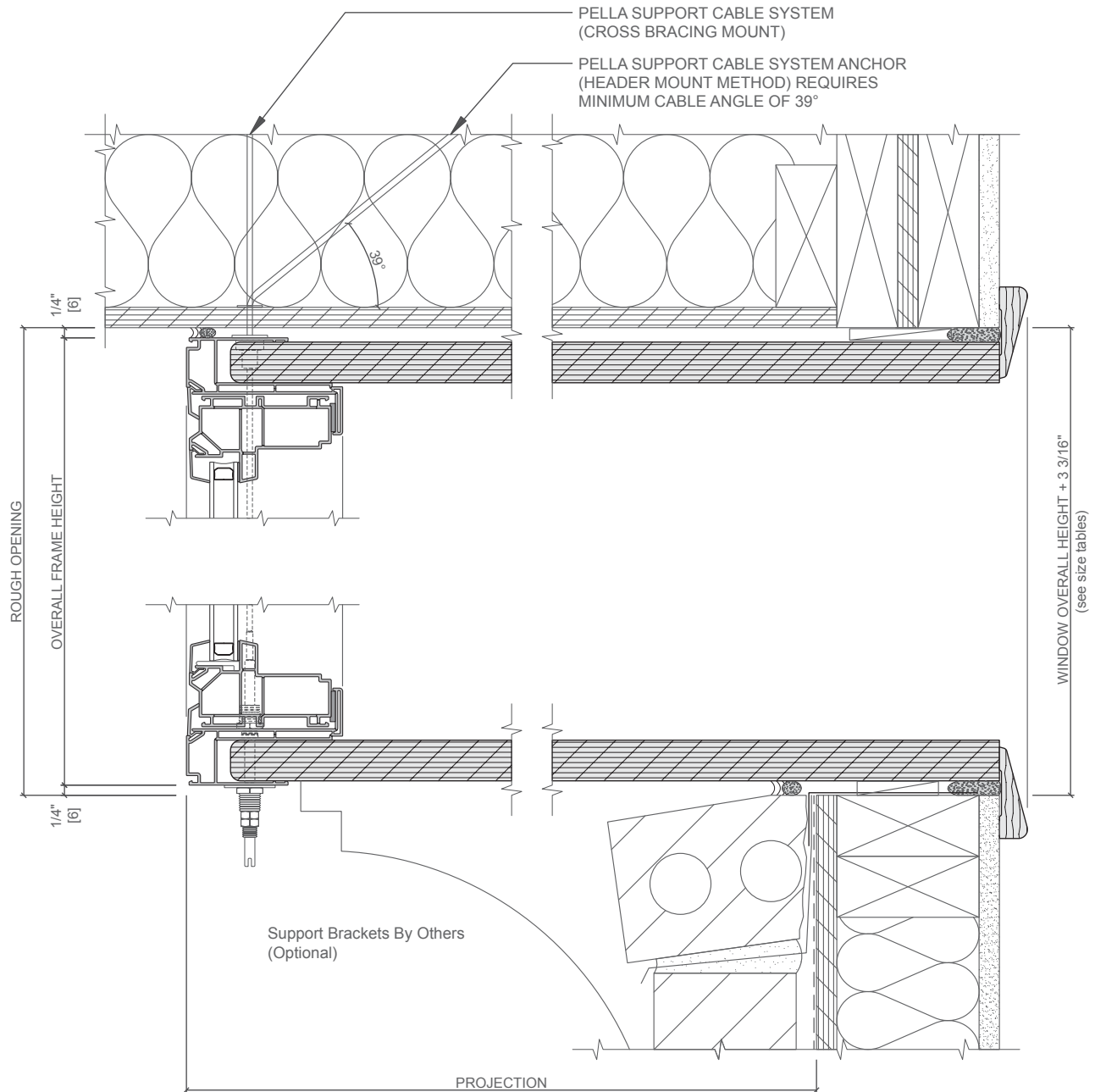






# 250 Series Bay - Bow

## Unit Sections - New Construction Bay

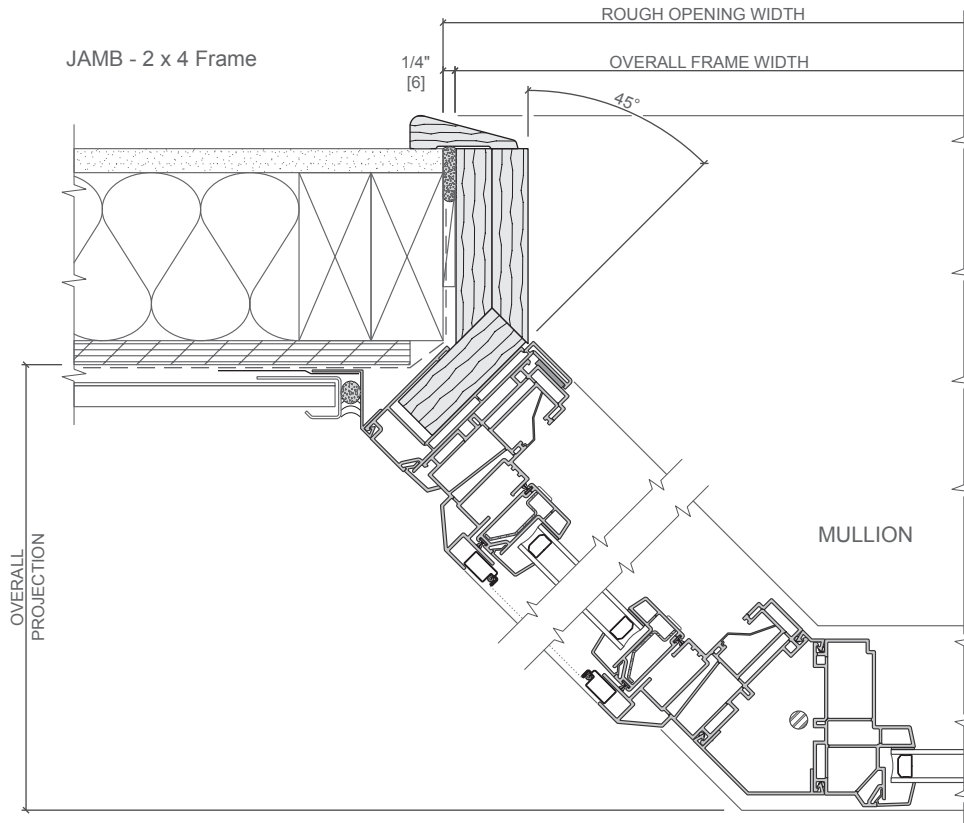
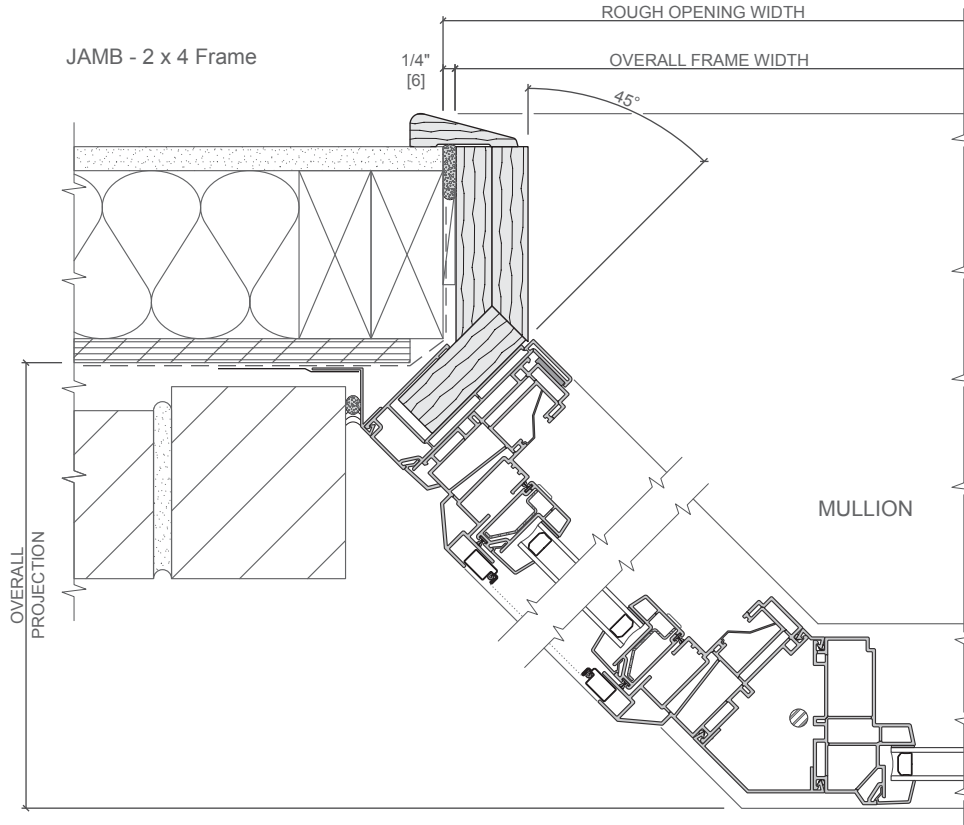


Scale 3" = 1' 0"  
All dimensions are approximate.



# 250 Series Bay - Bow

## Unit Sections - New Construction Bay



Scale 3" = 1' 0"  
All dimensions are approximate.