



Product Selection Guide

- Size and Performance Data FF-2
- Features and Options FF-2
- Sound Transmission Class and Outdoor-Indoor Transmission Class..... FF-2

Glazing Performance

- 3/4" Dual-Pane Glazing FF-3
- 1" Triple-Pane Glazing FF-4

Grille Types FF-5

Size Tables FF-6

Special Sizes, Dimensions and Formulas..... FF-8

Design Data FF-9

Detailed Product Descriptions FF-12

Unit Sections

- Frame Types FF-13
- Integral Nail-Fin..... FF-14
- Nail-Fin with Flat Casing..... FF-15

Document Navigation Tips:

Items listed in the table of contents above are active links that will take you to the corresponding page.
 The Pella logo on each page is a link back to this table of contents.
 Bookmarks are also included in this PDF document and are available as an additional navigation option.

Supporting documents for this product:

Test Reports:

https://media.pella.com/professional/adm/CertificationReports/Test_Reports_Vinyl-250.pdf?utm_source=pdfdoc

CSI Specs (readable using Microsoft Word or other text editing application):

https://media.pella.com/professional/adm/Vinyl250-CSI_Specs/08_53_13_FX-250.rtf?utm_source=pdfdoc

Detailed Product Description (readable using Microsoft Word or other text editing application):

https://media.pella.com/professional/adm/Vinyl250/V_250FF_DPD.rtf?utm_source=pdfdoc

Size Tables (requires appropriate CAD software to read and use):

https://media.pella.com/professional/adm/Vinyl250/V250-FW-Elev_D.dwg?utm_source=pdfdoc

CAD cross sections (requires appropriate CAD software to read and use):

https://media.pella.com/professional/adm/Vinyl250/V250-Fixed-Details_D.dwg?utm_source=pdfdoc

3D & BIM (requires appropriate software to read and use):

https://media.pella.com/professional/adm/RevitFiles/250-Revit/Window-Fixed_Rectangular-Pella-250_Series.zip?utm_source=pdfdoc

Sketchup (requires appropriate software to read and use):

https://media.pella.com/professional/adm/Vinyl250/PellaSKP_250Series_FixedRectangular.zip?utm_source=pdfdoc

Combination Recommendations:

https://media.pella.com/professional/adm/Vinyl250/V250_Combos.pdf?utm_source=pdfdoc

Installation Details:

https://media.pella.com/professional/adm/Vinyl250/V250-InstallDetails.pdf?utm_source=pdfdoc

Microsoft and Microsoft Word are registered trademarks of Microsoft Corp.



250 Series Fixed Frame Windows

Performance Data and Options

	Fixed Frame
Glazing (Insulating Glass)	
Glazing Type	
Dual-pane insulating glass	S
Triple-pane insulating glass	O
Insulated Glass Options / Low-E Types	
Advanced Low-E	S
NaturalSun Low-E	O
NaturalSun+ Low-E ₄	O
SunDefense™ Low-E ₄	O
SunDefense+ Low-E ₄	O
Additional Glazing Options	
Annealed glass	S
Tempered glass	O
Bronze-tinted Advanced Low-E ₄	O
Obscure glass ₅	O
Gas Fill / High Altitude	
Argon	S
High altitude	O
High altitude with argon ₄	O
Interior / Exterior Color	
White Interior/White Exterior	S
Almond Interior/Almond Exterior	O
Fossil Interior/Fossil Exterior	O
White Interior/Brown Exterior ₆	O
White Interior/Black Exterior ₆	O
Grilles	
Grilles-Between-the-Glass₃	
3/4" Contour	O
5/8" flat	O
Grille Patterns: Traditional, Prairie, Top Row, Custom - Equally Divided	O

	Fixed Frame
Sizes	
Standard Sizes	S
Special Sizes Available Built on 1/8" Increments	O
Frames	
Nail Fin Only	O
Nail Fin with J-Channel	O
Nail Fin with Flat Casing (Northeast region only)	O
Block	S
Double Wall Flush Flange (West Region Only)	O
Integral 5/8" Flange	O
Performance₁	
Standard Performance	
Meets or Exceeds AAMA/WDMA Ratings	CW-PG30 to CW-PG50
Air Infiltration (cfm/ft ² of frame @ 1.57 psf wind pressure) ₂	0.01
Design Pressure	30-50 psf
Water Penetration Resistance	4.60 to 7.52 psf
Nail Fin with Flat Casing (Northeast Region Only)	
Meets or Exceeds AAMA/WDMA Ratings	R-PG15 to R-PG35
Air Infiltration (cfm/ft ² of frame @ 1.57 psf wind pressure) ₂	0.13
Design Pressure	15 psf
Water Penetration Resistance	5.43 psf
Other Performance Criteria	
Forced Entry Resistance (Minimum Security Grade) ₃	40

Sound Transmission Class and Outdoor-Indoor Transmission Class

Frame Size Tested ₇	Glazing System				STC Rating	OITC Rating
	Overall Glazing Thickness	Exterior Glass Thickness	Interior Glass Thickness	Third Pane Thickness		
Fixed Frame Direct Set Window – Dual-Pane Insulating Glass						
48" x 60"	3/4"	3mm	3mm	—	26	22
Fixed Frame Direct Set Window – Triple-Pane Insulating Glass						
48" x 60"	1"	3mm	3mm	3mm	27	22

S = Standard, O = Optional, (—) = Not available.

(1) Published performance data is for single unit only. Combinations require reinforcing mullion between units.

(2) Published performance data for air infiltration is determined by testing a minimum of four (4) products of NFRC model size. Testing is conducted in accordance with ASTM E283. Air infiltration ratings for products will differ by size. The performance data does not apply to combination assemblies unless noted. Actual product performance may vary for a number of reasons including installation and product care.

(3) The higher the level, the greater the product's ability to resist forced entry.

(4) Not available with triple-pane glazing.

(5) Contact your local Pella sales representative for current offering.

(6) Not available at launch for Nail Fin with flat casing option, contact your local Pella sales representative for current offering.

(7) ASTM E 1425 defines standard sizes for acoustical testing. Ratings achieved at that size are representative of all sizes of the same configuration. The presence of Low-E or argon have negligible effect on sound attenuation characteristics.



250 Series Fixed Frame Windows

Glazing Performance - Total Unit

Glazing Thickness	Type of Glazing	NFRC Certified Product #	Glass (mm)		Gap Fill	Performance Values ¹				Shaded Areas Meet ENERGY STAR® Performance Criteria in Zones Shown				
			Ext.	Int.		U-Factor	SHGC	VLT	CR	U. S.		Canada ²		
										Zone		ER	Zone	
Fixed - Dual-Pane 3mm Glass										N	NC	SC	S	CA
3/4"	Advanced Low-E IG	PEL-A-291-00158-00003	3	3	Air	0.30	0.32	0.59	57					
	with grilles-between-the-glass	PEL-A-291-00158-00004				0.30	0.29	0.53	57					
3/4"	Advanced Low-E IG	PEL-A-291-00161-00003	3	3	Argon	0.26	0.31	0.59	60					
	with grilles-between-the-glass	PEL-A-291-00161-00004				0.26	0.28	0.53	60					
3/4"	NaturalSun Low-E IG	PEL-A-291-00157-00003	3	3	Air	0.31	0.58	0.67	56				34	CA
	with grilles-between-the-glass	PEL-A-291-00157-00004				0.31	0.52	0.60	56					
3/4"	NaturalSun Low-E IG	PEL-A-291-00160-00003	3	3	Argon	0.27	0.55	0.67	60				37	CA
	with grilles-between-the-glass	PEL-A-291-00160-00004				0.27	0.49	0.60	60				34	CA
3/4"	NaturalSun+ Low-E IG	PEL-A-291-00329-00001	3	3	Argon	0.23	0.53	0.65	46	N			41	CA
	with grilles-between-the-glass	PEL-A-291-00329-00002				0.23	0.48	0.59	46	N			38	CA
3/4"	SunDefense™ Low-E IG	PEL-A-291-00159-00003	3	3	Air	0.30	0.24	0.55	57					
	with grilles-between-the-glass	PEL-A-291-00159-00004				0.30	0.21	0.49	57				S	
3/4"	SunDefense Low-E IG	PEL-A-291-00162-00003	3	3	Argon	0.26	0.23	0.55	61			SC	S	
	with grilles-between-the-glass	PEL-A-291-00162-00004				0.26	0.21	0.49	61			SC	S	
3/4"	SunDefense+ Low-E IG	PEL-A-291-00330-00001	3	3	Argon	0.22	0.23	0.53	48	N	NC	SC	S	
	with grilles-between-the-glass	PEL-A-291-00330-00002				0.22	0.21	0.48	48	N	NC	SC	S	
Fixed - Dual-Pane 5mm Glass														
3/4"	Advanced Low-E IG	PEL-A-291-00218-00001	5	5	Air	0.32	0.31	0.58	53					
	with grilles-between-the-glass	PEL-A-291-00219-00001				0.33	0.28	0.52	53					
3/4"	Advanced Low-E IG	PEL-A-291-00224-00001	5	5	Argon	0.27	0.31	0.58	57					
	with grilles-between-the-glass	PEL-A-291-00225-00001				0.28	0.28	0.52	57					
3/4"	NaturalSun Low-E IG	PEL-A-291-00216-00001	5	5	Air	0.33	0.53	0.66	53					
	with grilles-between-the-glass	PEL-A-291-00217-00001				0.34	0.48	0.59	53					
3/4"	NaturalSun Low-E IG	PEL-A-291-00222-00001	5	5	Argon	0.28	0.53	0.66	56				35	CA
	with grilles-between-the-glass	PEL-A-291-00223-00001				0.29	0.48	0.59	56					
3/4"	NaturalSun+ Low-E IG	PEL-A-291-00337-00001	5	5	Argon	0.24	0.51	0.64	43	N			39	CA
	with grilles-between-the-glass	PEL-A-291-00338-00001				0.25	0.46	0.58	43	N			35	CA
3/4"	SunDefense™ Low-E IG	PEL-A-291-00053-00001	5	5	Air	0.31	0.24	0.54	54					
	with grilles-between-the-glass	PEL-A-291-00060-00001				0.33	0.22	0.48	54					
3/4"	SunDefense Low-E IG	PEL-A-291-00057-00001	5	5	Argon	0.27	0.24	0.54	58			SC	S	
	with grilles-between-the-glass	PEL-A-291-00064-00001				0.28	0.21	0.48	58					
3/4"	SunDefense+ Low-E IG	PEL-A-291-00339-00001	5	5	Argon	0.23	0.23	0.53	45		NC	SC	S	
	with grilles-between-the-glass	PEL-A-291-00340-00001				0.24	0.21	0.47	45		NC	SC	S	
Fixed - Dual-Pane 3mm Glass with Tinted Glazing														
3/4"	Bronze Advanced Low-E IG	PEL-A-291-00161-00005	3	3	Argon	0.26	0.31	0.44	60					
	with grilles-between-the-glass	PEL-A-291-00161-00006				0.26	0.28	0.39	60					
Fixed - Dual-Pane 5mm Glass with Tinted Glazing														
3/4"	Bronze Advanced Low-E IG	PEL-A-291-00230-00001	5	5	Argon	0.27	0.28	0.38	57					
	with grilles-between-the-glass	PEL-A-291-00231-00001				0.28	0.25	0.34	57					

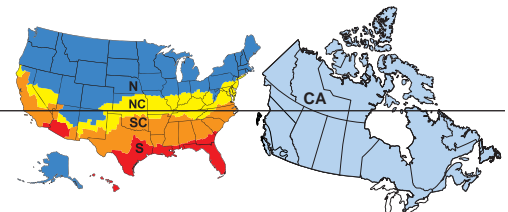
R-Value = 1/U-Factor
 SHGC = Solar Heat Gain Coefficient
 VLT % = Visible Light Transmission
 CR = Condensation Resistance
 ER = Canadian Energy Rating

(1) Glazing performance values are calculated based on NFRC 100, NFRC 200 and NFRC 500. ENERGY STAR® values are updated to 2023 (Version 7) criteria.

(2) The values shown are based on Canada's updated ENERGY STAR® 2020 initiative.

Based on unit size, some products will use 2.5mm glass that may have improved glazing performance from what is shown.

Visit www.energystar.gov for Energy Star guidelines.





250 Series Fixed Frame Windows

Glazing Performance - Total Unit

Glazing Thickness	Type of Glazing	NFRC Certified Product #	Glass (mm)			Gap Fill	Performance Values ¹				Shaded Areas Meet ENERGY STAR® Performance Criteria in Zones Shown						
			Ext.	Middle	Int.		U-Factor	SHGC	VLT	CR	U. S.		Canada ²				
											Zone		ER	Zone			
Fixed – Triple-Pane 3mm Glass											N	NC	SC	S	CA		
1"	Advanced Low-E Triple-pane IG	PEL-A-291-00198-00001	3	3	3	Air	0.23	0.27	0.46	65		NC					
	with Grilles-between-the-glass	PEL-A-291-00199-00001					0.24	0.24	0.41	65		NC					
1"	Advanced Low-E Triple-pane IG	PEL-A-291-00202-00001	3	3	3	Argon	0.19	0.27	0.46	68	N	NC			31	CA	
	with Grilles-between-the-glass	PEL-A-291-00203-00001					0.20	0.24	0.41	68	N	NC			28	CA	
1"	NaturalSun Low-E Triple-pane IG	PEL-A-291-00196-00001	3	3	3	Air	0.24	0.48	0.59	61	N				37	CA	
	with Grilles-between-the-glass	PEL-A-291-00197-00001					0.24	0.43	0.53	61	N				34	CA	
1"	NaturalSun Low-E Triple-pane IG	PEL-A-291-00200-00001	3	3	3	Argon	0.20	0.48	0.59	68	N				42	CA	
	with Grilles-between-the-glass	PEL-A-291-00201-00001					0.20	0.43	0.53	68	N				39	CA	
Fixed – 4mm Glass																	
1"	Advanced Low-E Triple-pane IG	PEL-A-291-00208-00001	4	4	4	Air	0.26	0.27	0.45	61							
	with Grilles-between-the-glass	PEL-A-291-00209-00001					0.27	0.24	0.40	61							
1"	Advanced Low-E Triple-pane IG	PEL-A-291-00212-00001	4	4	4	Argon	0.22	0.26	0.45	65	N	NC					
	with Grilles-between-the-glass	PEL-A-291-00213-00001					0.22	0.24	0.40	65	N	NC					
1"	NaturalSun Low-E Triple-pane IG	PEL-A-291-00206-00001	4	4	4	Air	0.26	0.46	0.58	61	N						
	with Grilles-between-the-glass	PEL-A-291-00207-00001					0.27	0.42	0.52	61							
1"	NaturalSun Low-E Triple-pane IG	PEL-A-291-00210-00001	4	4	4	Argon	0.22	0.46	0.58	64	N				38	CA	
	with Grilles-between-the-glass	PEL-A-291-00211-00001					0.23	0.42	0.52	64	N				35	CA	

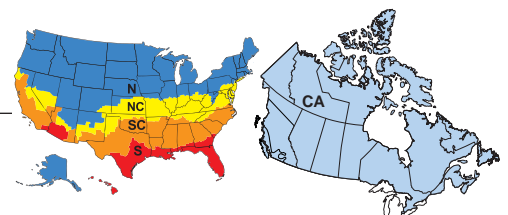
R-Value = 1/U-Factor
 SHGC = Solar Heat Gain Coefficient
 VLT % = Visible Light Transmission
 CR = Condensation Resistance
 ER = Canadian Energy Rating

(1) Glazing performance values are calculated based on NFRC 100, NFRC 200 and NFRC 500. ENERGY STAR® values are updated to 2023 (Version 7) criteria.

(2) The values shown are based on Canada's updated ENERGY STAR® 2020 initiative.

Based on unit size, some products will use 2.5mm glass that may have improved glazing performance from what is shown.

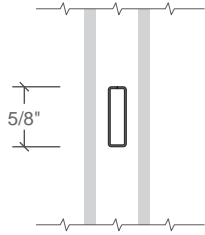
Visit www.energystar.gov for Energy Star guidelines.



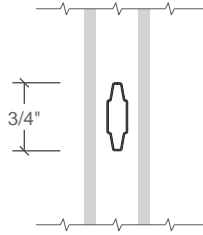


Grille Profiles

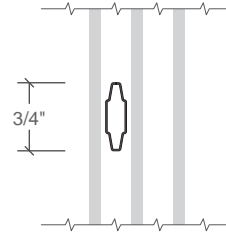
Grilles-Between-the-Glass



5/8" Flat



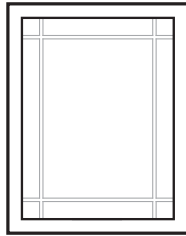
3/4" Contour



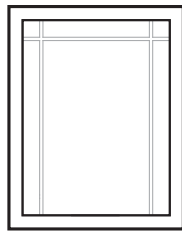
3/4" Contour

Grille Patterns

Prairie Lite Patterns

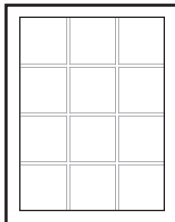


9-Lite Prairie

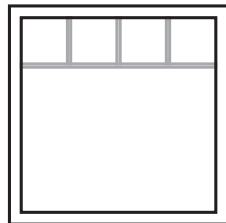


6-Lite Prairie

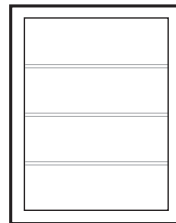
Other Available Patterns



Traditional



Top Row



Custom - Equally Divided

Prairie

- Approximately 4" from edge of sash to center of bar
- Minimum actual glass is 13"

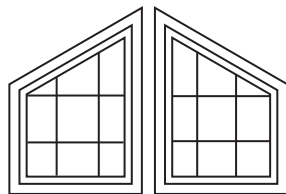
Traditional

- Specify number of lites.
- Grilles must be equally divided on visible glass.
- Minimum 6" x 6".

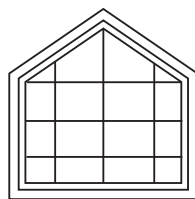
Top Row

- Standard visible glass to separator bar must be $\leq 1/2$ upper actual glass

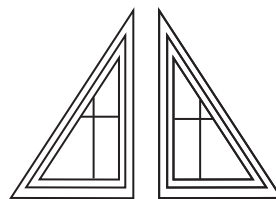
Special Shapes - Traditional grilles only



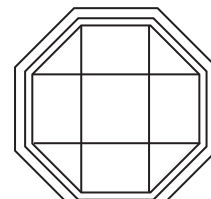
Gable



Housetop



Triangle



Octagon



250 Series Fixed Frame Windows

Size Tables

	(462) (343)	(457) (445)	(610) (597)	(711) (699)	(762) (749)	(813) (800)	(914) (902)	(1 219) (1 207)
Opening	1' 2"	1' 6"	2' 0"	2' 4"	2' 6"	2' 8"	3' 0"	4' 0"
Frame	13 1/2"	17 1/2"	23 1/2"	27 1/2"	29 1/2"	31 1/2"	35 1/2"	47 1/2"
(462) (343)	1-2/1-2	1-6/1-2	2-0/1-2	2-4/1-2	2-6/1-2	2-8/1-2	3-0/1-2	4-0/1-2
(457) (445)	1-2/1-6	1-6/1-6	2-0/1-6	2-4/1-6	2-6/1-6	2-8/1-6	3-0/1-6	4-0/1-6
(610) (597)	1-2/2-0	1-6/2-0	2-0/2-0	2-4/2-0	2-6/2-0	2-8/2-0	3-0/2-0	4-0/2-0
(711) (699)	1-2/2-4	1-6/2-4	2-0/2-4	2-4/2-4	2-6/2-4	2-8/2-4	3-0/2-4	4-0/2-4
(762) (749)	1-2/2-6	1-6/2-6	2-0/2-6	2-4/2-6	2-6/2-6	2-8/2-6	3-0/2-6	4-0/2-6
(813) (800)	1-2/2-8	1-6/2-8	2-0/2-8	2-4/2-8	2-6/2-8	2-8/2-8	3-0/2-8	4-0/2-8
(914) (902)	1-2/3-0	1-6/3-0	2-0/3-0	2-4/3-0	2-6/3-0	2-8/3-0	3-0/3-0	4-0/3-0
(1 219) (1 207)	1-2/4-0	1-6/4-0	2-0/4-0	2-4/4-0	2-6/4-0	2-8/4-0	3-0/4-0	4-0/4-0
(1 321) (1 308)	1-2/4-4	1-6/4-4	2-0/4-4	2-4/4-4	2-6/4-4	2-8/4-4	3-0/4-4	4-0/4-4
(1 372) (1 359)	1-2/4-6	1-6/4-6	2-0/4-6	2-4/4-6	2-6/4-6	2-8/4-6	3-0/4-6	4-0/4-6
(1 524) (1 511)	1-2/5-0	1-6/5-0	2-0/5-0	2-4/5-0	2-6/5-0	2-8/5-0	3-0/5-0	4-0/5-0
(1 575) (1 562)	1-2/5-2	1-6/5-2	2-0/5-2	2-4/5-2	2-6/5-2	2-8/5-2	3-0/5-2	4-0/5-2
(1 676) (1 664)	1-2/5-6	1-6/5-6	2-0/5-6	2-4/5-6	2-6/5-6	2-8/5-6	3-0/5-6	4-0/5-6
(1 829) (1 816)	1-2/6-0	1-6/6-0	2-0/6-0	2-4/6-0	2-6/6-0	2-8/6-0	3-0/6-0	4-0/6-0

Not to scale.



250 Series Fixed Frame Windows

Size Tables

	(1 372) (1 359)	(1 524) (1 511)	(1 829) (1 816)	(2 134) (2 121)	(2 438) (2 426)
Opening	4' 6"	5' 0"	6' 0"	7' 0"	8' 0"
Frame	53 1/2"	59 1/2"	71 1/2"	83 1/2"	95 1/2"
1' 2"	4-6/1-2	5-0/1-2	6-0/1-2	7-0/1-2	8-0/1-2
1' 6"	4-6/1-6	5-0/1-6	6-0/1-6	7-0/1-6	8-0/1-6
2' 0"	4-6/2-0	5-0/2-0	6-0/2-0	7-0/2-0	8-0/2-0
2' 4"	4-6/2-4	5-0/2-4	6-0/2-4	7-0/2-4	8-0/2-4
2' 6"	4-6/2-6	5-0/2-6	6-0/2-6	7-0/2-6	8-0/2-6
2' 8"	4-6/2-8	5-0/2-8	6-0/2-8	7-0/2-8	8-0/2-8
3' 0"	4-6/3-0	5-0/3-0	6-0/3-0	7-0/3-0	8-0/3-0
4' 0"	4-6/4-0	5-0/4-0	6-0/4-0	7-0/4-0	8-0/4-0
4' 4"	4-6/4-4	5-0/4-4	6-0/4-4	7-0/4-4	8-0/4-4
4' 6"	4-6/4-6	5-0/4-6	6-0/4-6	7-0/4-6	8-0/4-6
5' 0"	4-6/5-0	5-0/5-0	6-0/5-0	7-0/5-0	8-0/5-0
5' 2"	4-6/5-2	5-0/5-2	6-0/5-2		
5' 6"	4-6/5-6	5-0/5-6	6-0/5-6		
6' 0"	4-6/6-0	5-0/6-0	6-0/6-0		

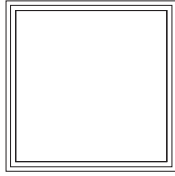
Not to scale.



250 Series Fixed Frame Windows

Special Sizes and Dimensions

Rectangle



MINIMUM
MW, NE, SE Regions
11-1/2" W x 11-1/2" H
(292 x 292)

MINIMUM
W, SW, S Regions
10" W x 10" H
(254 x 254)

MAXIMUM
108" W x 108" H
(2 743 x 2 743)
Maximum 40 ft²

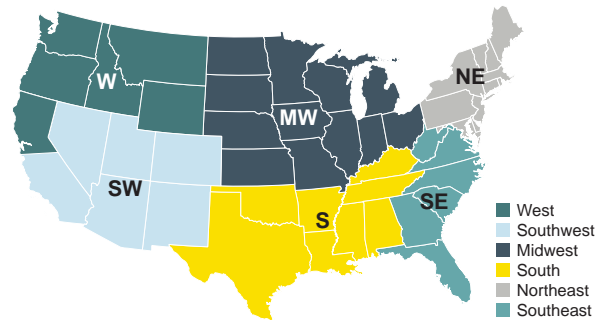
General Notes:

- To convert areas to square meters (m²), multiply square feet by 0.0929.
- Rough Opening—Frame Dimension + 1/2".
- Keep frame dimensions to the nearest 1/4" increment
- Tempered glass must measure > 18-1/2 diagonally.
- Go to next largest standard size to determine performance class and grade.
- Bronze limited to 22 ft².

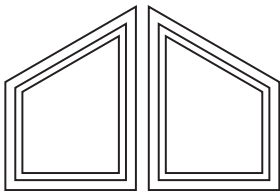
Miscellaneous Formulas

Single

Visible Glass	Width = Frame – 4.250" Height = Frame – 4.250"
Actual Glass	Width = Frame – 3.25" Height = Frame – 3.25"



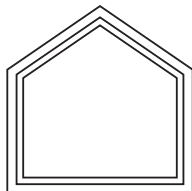
Left & Right Gable



MINIMUM
11-1/2" W x 11-1/2" H
(292 x 292)

MAXIMUM
40 ft² / 108" (2 743)
in any one direction

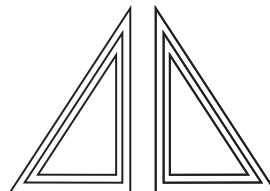
House Top



MINIMUM
17-1/2" W x 11-1/2" H
(445 x 292)

MAXIMUM
40 ft² / 108" (2 743)
in any one direction

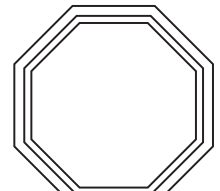
Left & Right 90° Triangle



MINIMUM
23-1/2" W x 11-1/2" H
(597 x 292)

MAXIMUM
40 ft² / 108" (2 743)
in any one direction

Octagon



MINIMUM
17-1/2" W x 17-1/2" H
(445 x 445)

MAXIMUM
73-1/2" W x 73-1/2" H
(1 867 x 1 867)

Custom Shapes Notes:

- Both width and height cannot be > than 73-1/2"
- Maximum Square Foot = 40 ft²
- Bronze glass is limited to 22 ft²
- If long side is ≤ 95-1/2", width and height ratio ≤ 8:1
- If long side is > 95-1/2", width and height ratio < 5:1
- Minimum overall width plus overall height is 29"
- Maximum frame width with 9-Lite Prairie grille = 72"
- Minimum leg length is 5-1/2"
- Minimum corner angle is 40°
- If glass width/height ratio is > 5:1, then glass must be tempered
- To convert areas to square meters (m²), multiply square feet by 0.0929.



250 Series Fixed Frame Windows

Design Data

Single Fixed Units						
Call Out	Frame		Visible Glass Ft ²	Frame Area Ft ²	Glass Thickness (mm)	Standard Performance Class & Grade ¹
	Width (Inches)	Height (Inches)			Standard	
1-2/1-2	13-1/2	13-1/2	0.6	1.3	2.5	CW50
1-2/1-6	13-1/2	17-1/2	0.9	1.6	2.5	CW50
1-2/2-0	13-1/2	23-1/2	1.2	2.2	2.5	CW50
1-2/2-4	13-1/2	27-1/2	1.3	2.6	2.5	CW50
1-2/2-6	13-1/2	29-1/2	1.7	2.8	2.5	CW50
1-2/2-8	13-1/2	31-1/2	1.8	3.0	2.5	CW50
1-2/3-0	13-1/2	35-1/2	2.0	3.3	2.5	CW50
1-2/4-0	13-1/2	47-1/2	2.8	4.5	2.5	CW50
1-2/4-4	13-1/2	51-1/2	3.0	4.8	2.5	CW50
1-2/4-6	13-1/2	53-1/2	3.2	5.0	2.5	CW50
1-2/5-0	13-1/2	59-1/2	3.5	5.6	2.5	CW50
1-2/5-2	13-1/2	61-1/2	3.7	5.8	2.5	CW30
1-2/5-6	13-1/2	65-1/2	3.9	6.1	2.5	CW30
1-2/6-0	13-1/2	71-1/2	4.3	6.7	2.5	CW30
1-6/1-2	17-1/2	13-1/2	0.9	1.6	2.5	CW50
1-6/1-6	17-1/2	17-1/2	1.2	2.1	2.5	CW50
1-6/2-0	17-1/2	23-1/2	1.8	2.9	2.5	CW50
1-6/2-4	17-1/2	27-1/2	2.1	3.3	2.5	CW50
1-6/2-6	17-1/2	29-1/2	2.3	3.6	2.5	CW50
1-6/2-8	17-1/2	31-1/2	2.5	3.8	2.5	CW50
1-6/3-0	17-1/2	35-1/2	2.9	4.3	2.5	CW50
1-6/4-0	17-1/2	47-1/2	4.0	5.8	2.5	CW50
1-6/4-4	17-1/2	51-1/2	4.3	6.3	2.5	CW50
1-6/4-6	17-1/2	53-1/2	4.5	6.5	2.5	CW50
1-6/5-0	17-1/2	59-1/2	5.1	7.2	2.5	CW50
1-6/5-2	17-1/2	61-1/2	5.3	7.5	2.5	CW30
1-6/5-6	17-1/2	65-1/2	5.6	8.0	2.5	CW30
1-6/6-0	17-1/2	71-1/2	6.2	8.7	2.5	CW30
2-0/1-2	23-1/2	13-1/2	1.2	2.2	2.5	CW50
2-0/1-6	23-1/2	17-1/2	1.8	2.9	2.5	CW50
2-0/2-0	23-1/2	23-1/2	2.6	3.8	2.5	CW50
2-0/2-4	23-1/2	27-1/2	3.1	4.5	2.5	CW50
2-0/2-6	23-1/2	29-1/2	3.4	4.8	2.5	CW50
2-0/2-8	23-1/2	31-1/2	3.6	5.1	2.5	CW50
2-0/3-0	23-1/2	35-1/2	4.2	5.8	2.5	CW50
2-0/4-0	23-1/2	47-1/2	5.8	7.8	2.5	CW50
2-0/4-4	23-1/2	51-1/2	6.3	8.4	2.5	CW50
2-0/4-6	23-1/2	53-1/2	6.6	8.7	2.5	CW50
2-0/5-0	23-1/2	59-1/2	7.4	9.7	2.5	CW50
2-0/5-2	23-1/2	61-1/2	7.7	10.0	2.5	CW30
2-0/5-6	23-1/2	65-1/2	8.2	10.7	2.5	CW30
2-0/6-0	23-1/2	71-1/2	9.0	11.7	2.5	CW30

Single Fixed Units						
Call Out	Frame		Visible Glass Ft ²	Frame Area Ft ²	Glass Thickness (mm)	Standard Performance Class & Grade ¹
	Width (Inches)	Height (Inches)			Standard	
2-4/1-2	27-1/2	13-1/2	1.5	2.6	2.5	CW50
2-4/1-6	27-1/2	17-1/2	2.1	3.3	2.5	CW50
2-4/2-0	27-1/2	23-1/2	3.1	4.5	2.5	CW50
2-4/2-4	27-1/2	27-1/2	3.8	5.3	2.5	CW50
2-4/2-6	27-1/2	29-1/2	4.1	5.6	2.5	CW50
2-4/2-8	27-1/2	31-1/2	4.4	6.0	2.5	CW50
2-4/3-0	27-1/2	35-1/2	5.0	6.8	2.5	CW50
2-4/4-0	27-1/2	47-1/2	7.0	9.1	2.5	CW50
2-4/4-4	27-1/2	51-1/2	7.6	9.8	2.5	CW50
2-4/4-6	27-1/2	53-1/2	8.0	10.2	2.5	CW50
2-4/5-0	27-1/2	59-1/2	8.9	11.4	2.5	CW50
2-4/5-2	27-1/2	61-1/2	9.2	11.7	2.5	CW30
2-4/5-6	27-1/2	65-1/2	9.9	12.5	2.5	CW30
2-4/6-0	27-1/2	71-1/2	10.9	13.7	2.5	CW30
2-6/1-2	29-1/2	13-1/2	1.6	2.8	2.5	CW50
2-6/1-6	29-1/2	17-1/2	2.3	3.6	2.5	CW50
2-6/2-0	29-1/2	23-1/2	3.4	4.8	2.5	CW50
2-6/2-4	29-1/2	27-1/2	4.1	5.6	2.5	CW50
2-6/2-6	29-1/2	29-1/2	4.4	6.0	2.5	CW50
2-6/2-8	29-1/2	31-1/2	4.8	6.5	2.5	CW50
2-6/3-0	29-1/2	35-1/2	5.5	7.3	2.5	CW50
2-6/4-0	29-1/2	47-1/2	7.6	9.7	2.5	CW50
2-6/4-4	29-1/2	51-1/2	8.3	10.6	2.5	CW50
2-6/4-6	29-1/2	53-1/2	8.6	11.0	2.5	CW50
2-6/5-0	29-1/2	59-1/2	9.7	12.2	2.5	CW50
2-6/5-2	29-1/2	61-1/2	10.0	12.6	2.5	CW30
2-6/5-6	29-1/2	65-1/2	10.7	13.4	2.5	CW30
2-6/6-0	29-1/2	71-1/2	11.8	14.6	3.0	CW30
2-8/1-2	31-1/2	13-1/2	1.8	3.0	2.5	CW50
2-8/1-6	31-1/2	17-1/2	2.5	3.8	2.5	CW50
2-8/2-0	31-1/2	23-1/2	3.6	5.1	2.5	CW50
2-8/2-4	31-1/2	27-1/2	4.4	6.0	2.5	CW50
2-8/2-6	31-1/2	29-1/2	4.8	6.5	2.5	CW50
2-8/2-8	31-1/2	31-1/2	5.2	6.9	2.5	CW50
2-8/3-0	31-1/2	35-1/2	5.9	7.8	2.5	CW50
2-8/4-0	31-1/2	47-1/2	8.2	10.4	2.5	CW50
2-8/4-4	31-1/2	51-1/2	8.9	11.3	2.5	CW50
2-8/4-6	31-1/2	53-1/2	9.3	11.7	2.5	CW50
2-8/5-0	31-1/2	59-1/2	10.5	13.0	2.5	CW50
2-8/5-2	31-1/2	61-1/2	10.8	13.5	2.5	CW30
2-8/5-6	31-1/2	65-1/2	11.6	14.3	3.0	CW30
2-8/6-0	31-1/2	71-1/2	12.7	15.6	3.0	CW30

(1) Maximum performance when glazed with the appropriate glass thickness.

To convert areas to square meters (m²), multiply square feet by 0.0929.



250 Series Fixed Frame Windows

Design Data

Single Fixed Units						
Call Out	Frame		Visible Glass Ft ²	Frame Area Ft ²	Glass Thickness (mm)	Standard Performance Class & Grade ⁽¹⁾
	Width (Inches)	Height (Inches)			Standard	
3-0/1-2	35-1/2	13-1/2	2.0	3.3	2.5	CW50
3-0/1-6	35-1/2	17-1/2	2.9	4.3	2.5	CW50
3-0/2-0	35-1/2	23-1/2	4.2	5.8	2.5	CW50
3-0/2-4	35-1/2	27-1/2	5.0	6.8	2.5	CW50
3-0/2-6	35-1/2	29-1/2	5.5	7.3	2.5	CW50
3-0/2-8	35-1/2	31-1/2	5.9	7.8	2.5	CW50
3-0/3-0	35-1/2	35-1/2	6.8	8.8	2.5	CW50
3-0/4-0	35-1/2	47-1/2	9.4	11.7	2.5	CW50
3-0/4-4	35-1/2	51-1/2	10.3	12.7	2.5	CW50
3-0/4-6	35-1/2	53-1/2	10.7	13.2	2.5	CW50
3-0/5-0	35-1/2	59-1/2	12.0	14.7	3.0	CW50
3-0/5-2	35-1/2	61-1/2	12.4	15.2	3.0	CW30
3-0/5-6	35-1/2	65-1/2	13.3	16.1	3.0	CW30
3-0/6-0	35-1/2	71-1/2	14.6	17.6	3.0	CW30
4-0/1-2	47-1/2	13-1/2	2.8	4.5	2.5	CW50
4-0/1-6	47-1/2	17-1/2	4.0	5.8	2.5	CW50
4-0/2-0	47-1/2	23-1/2	5.8	7.8	2.5	CW50
4-0/2-4	47-1/2	27-1/2	7.0	9.1	2.5	CW50
4-0/2-6	47-1/2	29-1/2	7.6	9.7	2.5	CW50
4-0/2-8	47-1/2	31-1/2	8.2	10.4	2.5	CW50
4-0/3-0	47-1/2	35-1/2	9.4	11.7	2.5	CW50
4-0/4-0	47-1/2	47-1/2	13.0	15.7	3.0	CW50
4-0/4-4	47-1/2	51-1/2	14.2	17.0	3.0	CW50
4-0/4-6	47-1/2	53-1/2	14.8	17.6	3.0	CW50
4-0/5-0	47-1/2	59-1/2	16.6	19.6	3.0	CW50
4-0/5-2	47-1/2	61-1/2	17.2	20.3	3.0	CW30
4-0/5-6	47-1/2	65-1/2	18.4	21.6	3.0	CW30
4-0/6-0	47-1/2	71-1/2	20.2	23.6	3.0	CW30
4-6/1-2	53-1/2	13-1/2	3.2	5.0	2.5	CW50
4-6/1-6	53-1/2	17-1/2	4.5	6.5	2.5	CW50
4-6/2-0	53-1/2	23-1/2	6.6	8.7	2.5	CW50
4-6/2-4	53-1/2	27-1/2	8.0	10.2	2.5	CW50
4-6/2-6	53-1/2	29-1/2	8.6	11.0	2.5	CW50
4-6/2-8	53-1/2	31-1/2	9.3	11.7	2.5	CW50
4-6/3-0	53-1/2	35-1/2	10.7	13.2	2.5	CW50
4-6/4-0	53-1/2	47-1/2	14.8	17.6	3.0	CW50
4-6/4-4	53-1/2	51-1/2	16.2	19.1	3.0	CW50
4-6/4-6	53-1/2	53-1/2	16.8	19.9	3.0	CW50
4-6/5-0	53-1/2	59-1/2	18.9	22.1	3.0	CW50
4-6/5-2	53-1/2	61-1/2	19.6	22.8	3.0	CW30
4-6/5-6	53-1/2	65-1/2	20.9	24.3	3.0	CW30
4-6/6-0	53-1/2	71-1/2	23.0	26.6	5.0	CW30

Single Fixed Units						
Call Out	Frame		Visible Glass Ft ²	Frame Area Ft ²	Glass Thickness (mm)	Standard Performance Class & Grade ⁽¹⁾
	Width (Inches)	Height (Inches)			Standard	
5-0/1-2	59-1/2	13-1/2	3.5	5.6	2.5	CW50
5-0/1-6	59-1/2	17-1/2	5.1	7.2	2.5	CW50
5-0/2-0	59-1/2	23-1/2	7.4	9.7	2.5	CW50
5-0/2-4	59-1/2	27-1/2	8.9	11.4	2.5	CW50
5-0/2-6	59-1/2	29-1/2	9.7	12.2	2.5	CW50
5-0/2-8	59-1/2	31-1/2	10.5	13.0	2.5	CW50
5-0/3-0	59-1/2	35-1/2	12.0	14.7	3.0	CW50
5-0/4-0	59-1/2	47-1/2	16.6	19.6	3.0	CW50
5-0/4-4	59-1/2	51-1/2	18.1	21.3	3.0	CW50
5-0/4-6	59-1/2	53-1/2	18.9	22.1	3.0	CW50
5-0/5-0	59-1/2	59-1/2	21.2	24.6	3.0	CW50
5-0/5-2	59-1/2	61-1/2	22.0	25.4	5.0	CW30
5-0/5-6	59-1/2	65-1/2	23.5	27.1	5.0	CW30
5-0/6-0	59-1/2	71-1/2	25.8	29.5	5.0	CW30
6-0/1-2	71-1/2	13-1/2	4.3	6.7	2.5	CW30
6-0/1-6	71-1/2	17-1/2	6.2	8.7	2.5	CW30
6-0/2-0	71-1/2	23-1/2	9.0	11.7	2.5	CW30
6-0/2-4	71-1/2	27-1/2	10.9	13.7	2.5	CW30
6-0/2-6	71-1/2	29-1/2	11.8	14.6	3.0	CW30
6-0/2-8	71-1/2	31-1/2	12.7	15.6	3.0	CW30
6-0/3-0	71-1/2	35-1/2	14.6	17.6	3.0	CW30
6-0/4-0	71-1/2	47-1/2	20.2	23.6	3.0	CW30
6-0/4-4	71-1/2	51-1/2	22.1	25.6	5.0	CW30
6-0/4-6	71-1/2	53-1/2	23.0	26.6	5.0	CW30
6-0/5-0	71-1/2	59-1/2	25.8	29.5	5.0	CW30
6-0/5-2	71-1/2	61-1/2	26.7	30.5	5.0	CW30
6-0/5-6	71-1/2	65-1/2	28.6	32.5	5.0	CW30
6-0/6-0	71-1/2	71-1/2	31.4	35.5	5.0	CW30
7-0/1-2	83-1/2	13-1/2	5.1	7.8	2.5	CW30
7-0/1-6	83-1/2	17-1/2	7.3	10.1	2.5	CW30
7-0/2-0	83-1/2	23-1/2	10.6	13.6	2.5	CW30
7-0/2-4	83-1/2	27-1/2	12.8	15.9	3.0	CW30
7-0/2-6	83-1/2	29-1/2	13.9	17.1	3.0	CW30
7-0/2-8	83-1/2	31-1/2	15.0	18.3	3.0	CW30
7-0/3-0	83-1/2	35-1/2	17.2	20.6	3.0	CW30
7-0/4-0	83-1/2	47-1/2	23.8	27.5	5.0	CW30
7-0/4-4	83-1/2	51-1/2	26.0	29.9	5.0	CW30
7-0/4-6	83-1/2	53-1/2	27.1	31.0	5.0	CW30
7-0/5-0	83-1/2	59-1/2	30.4	34.5	5.0	CW30

(1) Maximum performance when glazed with the appropriate glass thickness.

To convert areas to square meters (m²), multiply square feet by 0.0929.



250 Series Fixed Frame Windows

Design Data

Single Fixed Units						
Call Out	Frame		Visible Glass Ft ²	Frame Area Ft ²	Glass Thickness (mm)	Standard Performance Class & Grade ⁽¹⁾
	Width (Inches)	Height (Inches)			Standard	
8-0/1-2	95-1/2	13-1/2	5.1	7.8	2.5	CW30
8-0/1-6	95-1/2	17-1/2	8.4	11.6	2.5	CW30
8-0/2-0	95-1/2	23-1/2	12.2	15.6	3.0	CW30
8-0/2-4	95-1/2	27-1/2	14.7	18.2	3.0	CW30
8-0/2-6	95-1/2	29-1/2	16.0	19.6	3.0	CW30
8-0/2-8	95-1/2	31-1/2	17.3	20.9	3.0	CW30
8-0/3-0	95-1/2	35-1/2	19.8	23.5	3.0	CW30
8-0/4-0	95-1/2	47-1/2	27.4	31.5	5.0	CW30
8-0/4-4	95-1/2	51-1/2	29.9	34.2	5.0	CW30
8-0/4-6	95-1/2	53-1/2	31.2	35.5	5.0	CW30
8-0/5-0	95-1/2	59-1/2	35.0	39.5	5.0	CW30

(1) Maximum performance when glazed with the appropriate glass thickness.

To convert areas to square meters (m²), multiply square feet by 0.0929.



Frame

- Overall frame depth: 3-1/4" on all frame types.
- Frame members are mitered and heat fused to provide a fully welded corner assembly. Sill is fitted with weeps.
- Frame: [1-1/8" setback nail fin for 2-1/8" wall depth] [nail fin with flat casing for 2-1/8" wall depth₁] [Block frame for 3-1/4" wall depth] [Double Wall Flush Flange for 3" wall depth] [Integral 5/8" flange for 3" wall depth].
- Interior and exterior frame surfaces are extruded rigid uPVC.

Glazing System

- Quality float glass complying with ASTM C 1036.
- Exterior face-glazed sealed insulating glass.
- Dual-Pane insulating glass [[annealed] [tempered]] [[Advanced] [NaturalSun] [SunDefense™] Low-E coated [with Argon]] [[NaturalSun+] [SunDefense+] Low-E with argon]] [Bronze, Advanced Low-E coated [with Argon]] [Obscure₃] [High Altitude₂]
- or-
- 1" Triple-Pane [[annealed] [tempered]] [[Advanced] [NaturalSun] Low-E coated [with Argon]] [Obscure₃] [High Altitude₂].

Interior / Exterior

- Window frame and sash members are [[White] [Almond] [Fossil] with integral color extruded throughout the profiles] [[Brown] [Black]] laminate exterior, consisting of a solar reflective coating exceeding AAMA 307 test requirements, with White integral color extruded throughout the profiles on the interior.
- All exposed PVC surfaces are smooth, glossy and uniform in appearance.

Optional Products

Grilles

- Grilles-Between-the-Glass
 - [Dual-Pane Insulating glass contains [[3/4" [1" contoured] [5/8" flat] aluminum grilles permanently installed between two panes of glass] [Triple-Pane Insulating glass contains 3/4" contoured aluminum grilles permanently installed between the exterior panes of glass].
 - Patterns are [Traditional] [9-Lite Prairie] [6-Lite Prairie] [Top Row].
 - Interior grille color matches interior frame.
 - Exterior grille color [3/4" Grille is [White] [Almond₃] [Fossil₃] [Brown] [Black]] [1" Grille is [White] [Almond₄] [Fossil₄]] [5/8" Grille is [White] [Almond₄] [Fossil₄]].

(1) Flat casing availability is limited to Northeast region, not all color options available at launch. Contact your local sales representative for current offering.

(2) Dual-Pane IG High Altitude glazings are available with or without Argon. Triple-Pane IG High Altitude glazings are only available without Argon.

(3) Obscure glass not available with Bronze Advanced, SunDefense+ or NaturalSun+ Low-E.

(4) Almond grilles only available on Almond units. Almond units with grilles will have an Almond grille color, Fossil extruded color units with grilles have a Fossil grille color.

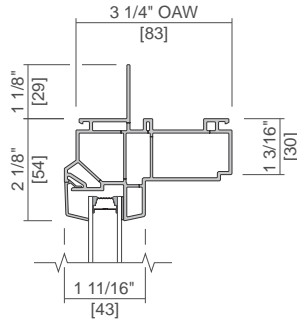


250 Series Fixed Frame Windows

Unit Sections - Frame Types

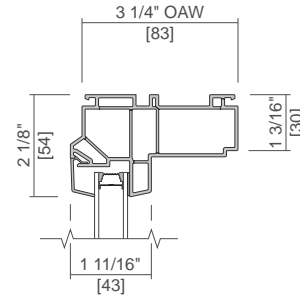
NEW CONSTRUCTION FRAME

Standard Nail Fin

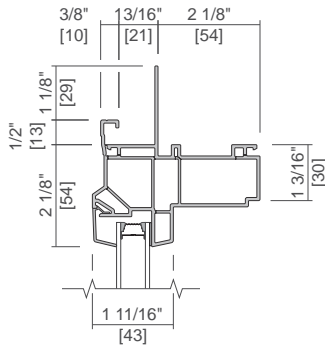


REPLACEMENT FRAME

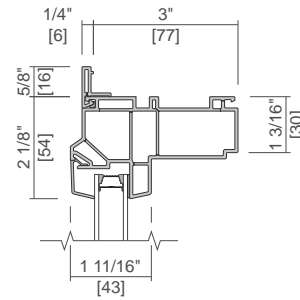
Standard Block Frame



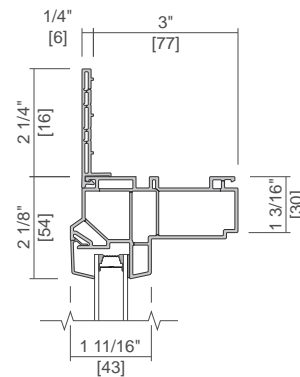
Standard Nail Fin with J-Channel



5/8\"/>

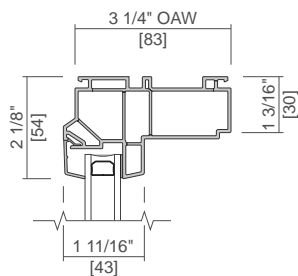


Double Wall Flush Flange

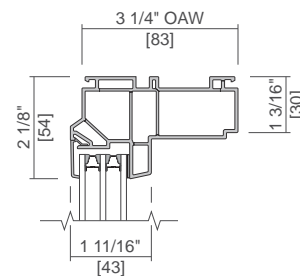


GLAZING OPTIONS

3/4\"/>



1\"/>



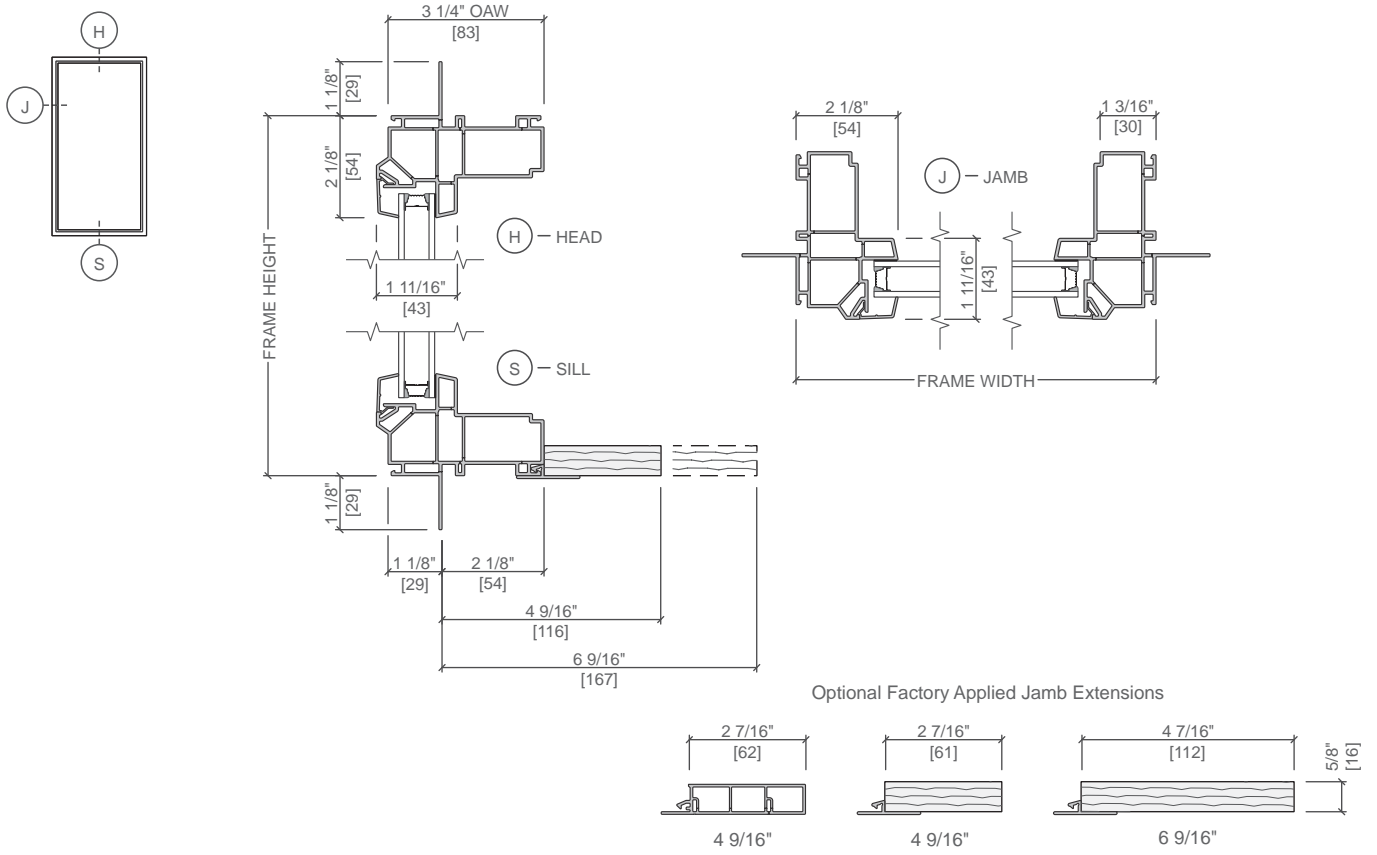
Scale 3" = 1' 0"

All dimensions are approximate.



250 Series Fixed Frame Windows

Unit Sections - Integral Nail-Fin



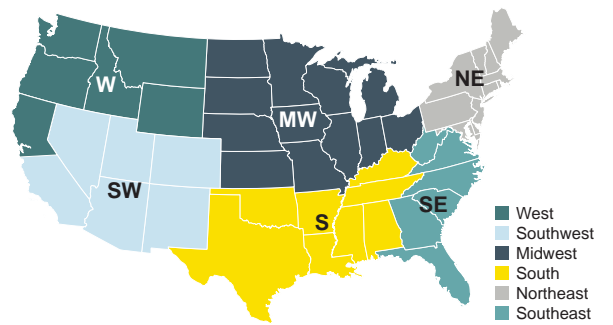
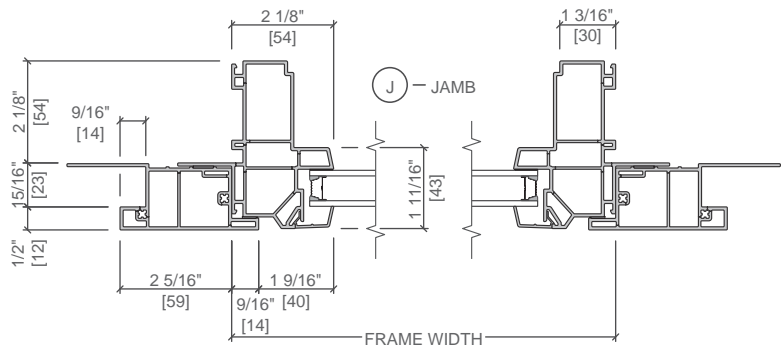
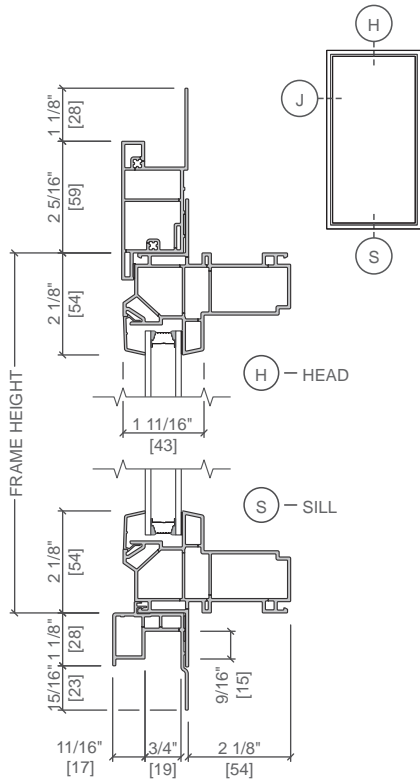
Scale 3" = 1' 0"

All dimensions are approximate.



250 Series Fixed Frame Windows

Unit Sections - Nail-Fin with Flat Casing



Scale 3" = 1' 0"

All dimensions are approximate.

Flat casing availability is limited to Northeast region. Contact your local sales representative for current offering.

Rev. 09/26/2023

Pella 2025 Architectural Design Manual | Division 08 – Openings | Windows and Doors | www.Pella.com