



Product Selection Guide

Size and Performance Data..... 250-BFW-2

Sound Transmission Class and Outdoor-Indoor Transmission Class 250-BFW-2

Features and Options..... 250-BFW-3

Glazing Performance..... 250-BFW-4

Special Sizes and Dimensions 250-BFW-6

Design Data 250-BFW-7

Detailed Product Description

Standard Windows 250-BFW-9

Premium Windows 250-BFW-10

Unit Sections

Frame Types Overview..... 250-BFW-11

1" Setback Nail Fin 250-BFW-12

1-3/8" Setback Nail Fin..... 250-BFW-14

Block Frame 250-BFW-16

Document Navigation Tips:

Items listed in the table of contents above are active links that will take you to the corresponding page.

The Pella logo on each page is a link back to this table of contents.

Bookmarks are also included in this PDF document and are available as an additional navigation option.



250 Series Standard and Premium Bifold Pass Through Windows

Size and Performance Data

	Standard Bifold Window	Premium Bifold Window
Sizes		
Standard Sizes ⁽¹⁾	S	S
Special Sizes Available Built on 1/8" Increments	O	O
Frames		
1" Nail fin for 4-1/4" wall depth and 1-3/8" Nail Fin for 3-7/8" Wall depth	S	S
Block Frame - 5-1/4" Frame Depth	S	S
Performance		
Meets or Exceeds AAMA/WDMA Ratings	Not Rated	PG30
Air Infiltration (cfm/ft ² of frame @ 1.57 psf wind pressure)	—	—
Design Pressure (psf)	—	—
Water Resistance (psf)	—	—
Forced Entry	—	—

Sound Transmission Class and Outdoor-Indoor Transmission Class

Frame Size Tested	Glazing System				STC Rating	OITC Rating
	Overall Glazing Thickness	Exterior Glass Thickness	Interior Glass Thickness	Third Pane Thickness		
Premium Folding Window – Dual-Pane Insulating Glass						
—	7/8"	3mm	3mm	—	31	25
—	7/8"	4mm	4mm	—	31	26
Premium Folding Window – Triple-Pane Insulating glass						
—	1-1/4"	3mm	3mm	3mm	32	26

S = Standard; O = Optional; (—) = Not Available

(1) See size charts in this section for available sizes.

The presence of low-E or argon have negligible effect on sound attenuation characteristics.

Performance with additional options may not be the same as Standard and Special size units. Please contact your local Pella representative for complete information.



250 Series Standard and Premium Bifold Pass Through Windows

Features and Options

	250 Series Bifold Windows
Glazing	
Glazing Type	
Dual-Pane insulating glass	S
Triple-Pane insulating glass	O
Insulated Glass Options / Low-E Types	
Advanced Low-E	S
SunDefense™ Low-E	O
Additional Glazing Options	
Tempered Glass	S
Gas Fill / High Altitude	
Argon	S
High altitude	O
Interior/Exterior Color	
White Interior/White Exterior	S
Beige Interior/Beige Exterior	O
White Interior/Brown Exterior	O
White Interior/Black Exterior	O
Black Interior/Black Exterior (Premium Only)	O
Door Handle Finishes	
Color matched to frame	S
Additional Interior Finishes: Satin Nickel	O

S = Standard; O = Optional



250 Series Standard and Premium Bifold Pass Through Windows

Glazing Performance - Total Unit

Glazing Thickness	Type of Glazing	NFRC Certified Product #	Glass (mm)		Gap Fill	Performance Values ₁				Shaded Areas Meet ENERGY STAR® Performance Criteria in Zones Shown				
			Ext.	Int.		U-Factor	SHGC	VLT	CR	U. S.		Canada ₂		
										Zone	ER	Zone	ER	Zone
Standard Dual-Pane Insulating glass										N	NC	SC	S	CA
3/4"	Advanced Low-E IG	WDI-A-34-02305-00001	3	3	air	0.37	0.25	0.46	49					
3/4"	Advanced Low-E IG	WDI-A-34-02581-00001	3	3	argon	0.33	0.25	0.46	50					
3/4"	Advanced Low-E IG	WDI-A-34-02333-00001	5	5	air	0.36	0.25	0.45	49					
3/4"	Advanced Low-E IG	WDI-A-34-02609-00001	5	5	argon	0.33	0.25	0.45	50					
3/4"	SunDefense™ Low-E IG	WDI-A-34-02343-00001	3	3	air	0.36	0.19	0.42	49					
3/4"	SunDefense™ Low-E IG	WDI-A-34-02619-00001	3	3	argon	0.33	0.19	0.42	50					
3/4"	SunDefense™ Low-E IG	WDI-A-34-02371-00001	5	5	air	0.36	0.19	0.41	49					
3/4"	SunDefense™ Low-E IG	WDI-A-34-02647-00001	5	5	argon	0.32	0.19	0.41	50					

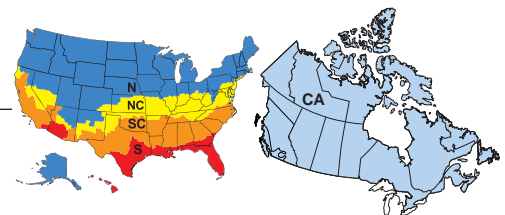
Glazing Thickness	Type of Glazing	NFRC Certified Product #	Glass (mm)			Gap Fill	Performance Values ₁				Shaded Areas Meet ENERGY STAR® Performance Criteria in Zones Shown				
			Ext.	Middle	Int.		U-Factor	SHGC	VLT	CR	U. S.		Canada ₂		
											Zone	ER	Zone	ER	Zone
Standard Triple-Pane Insulating glass										N	NC	SC	S	CA	
1"	SunDefense™ Low-E IG	WDI-A-34-02789-00001	3	3	3	argon	0.24	0.16	0.30	49	N	NC	SC	S	
1"	SunDefense™ Low-E IG	WDI-A-34-02801-00001	4	4	4	argon	0.25	0.16	0.30	49	N	NC	SC	S	

R-Value = 1/U-Factor
 SHGC = Solar Heat Gain Coefficient
 VLT % = Visible Light Transmission
 CR = Condensation Resistance
 ER = Canadian Energy Rating

(1) Glazing performance values are calculated based on NFRC 100, NFRC 200 and NFRC 500. ENERGY STAR® values are updated to 2023 (Version 7) criteria.

(2) The values shown are based on Canada's updated ENERGY STAR® 2020 initiative.

Visit www.energystar.gov for Energy Star guidelines.





250 Series Standard and Premium Bifold Pass Through Windows

Glazing Performance - Total Unit

Glazing Thickness	Type of Glazing	NFRC Certified Product #	Glass (mm)		Gap Fill	Performance Values ₁				Shaded Areas Meet ENERGY STAR® Performance Criteria in Zones Shown				
			Ext.	Int.		U-Factor	SHGC	VLT	CR	U. S.		Canada ₂		
										Zone	ER	Zone	ER	Zone
Premium Dual-Pane Insulating glass										N	NC	SC	S	CA
3/4"	Advanced Low-E IG	WDI-A-34-03409-00001	3	3	air	0.39	0.25	0.46	45					
3/4"	Advanced Low-E IG	WDI-A-34-03685-00001	3	3	argon	0.36	0.25	0.46	45					
3/4"	Advanced Low-E IG	WDI-A-34-03437-00001	5	5	air	0.38	0.25	0.45	45					
3/4"	Advanced Low-E IG	WDI-A-34-03713-00001	5	5	argon	0.36	0.25	0.45	45					
3/4"	SunDefense™ Low-E IG	WDI-A-34-03447-00001	3	3	air	0.39	0.19	0.42	45					
3/4"	SunDefense™ Low-E IG	WDI-A-34-03723-00001	3	3	argon	0.36	0.19	0.42	45					
3/4"	SunDefense™ Low-E IG	WDI-A-34-03475-00001	5	5	air	0.38	0.19	0.41	45					
3/4"	SunDefense™ Low-E IG	WDI-A-34-03751-00001	5	5	argon	0.35	0.19	0.41	45					

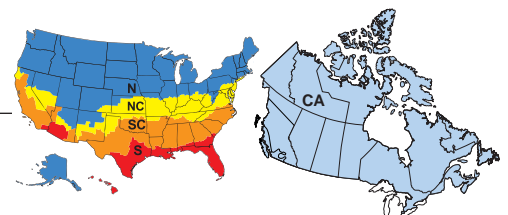
Glazing Thickness	Type of Glazing	NFRC Certified Product #	Glass (mm)			Gap Fill	Performance Values ₁				Shaded Areas Meet ENERGY STAR® Performance Criteria in Zones Shown				
			Ext.	Middle	Int.		U-Factor	SHGC	VLT	CR	U. S.		Canada ₂		
											Zone	ER	Zone	ER	Zone
Premium Triple-Pane Insulating glass										N	NC	SC	S	CA	
1"	SunDefense™ Low-E IG	WDI-A-34-03617-00001	3	3	3	argon	0.30	0.17	0.30	44	N	NC	SC	S	
1"	SunDefense™ Low-E IG	WDI-A-34-03893-00001	4	4	4	argon	0.28	0.16	0.30	44	N	NC	SC	S	

R-Value = 1/U-Factor
 SHGC = Solar Heat Gain Coefficient
 VLT % = Visible Light Transmission
 CR = Condensation Resistance
 ER = Canadian Energy Rating

(1) Glazing performance values are calculated based on NFRC 100, NFRC 200 and NFRC 500. ENERGY STAR® values are updated to 2023 (Version 7) criteria.

(2) The values shown are based on Canada's updated ENERGY STAR® 2020 initiative.

Visit www.energystar.gov for Energy Star guidelines.





Special Size and Dimensions

Special Sizes

Panel	STANDARD PANEL CONFIGURATION	Frame Sizing			
		Min. Width	Min. Height	Max. Width	Max. Height
2-Panel	OL-2R, 1L-1R, 2L-OR	35.25"	34.5"	75.125"	78"
3-Panel	OL-3R, 1L-2R, 2L-1R, 3L-OR	52"	34.5"	111.9375"	78"
4-Panel	OL-4R, 1L-3R, 2L-2R, 3L-1R, 4L-OR	68.5"	34.5"	147.5"	78"
5-Panel	OL-5R, 1L-4R, 2L-3R, 3L-2R, 4L-1R, 5L-OR	84.5"	34.5"	184.25"	78"
6-panel	OL-6R, 1L-5R, 2L-4R, 3L-3R, 4L-2R, 5L-1R, 6L-OR	100"	34.5"	219.75"	78"

Panel	PREMIUM PANEL CONFIGURATION	Frame Sizing			
		Min. Width	Min. Height	Max. Width	Max. Height
2-Panel	OL-2R, 1L-1R, 2L-OR	41.25"	34.5"	96.5625"	78"
3-Panel	OL-3R, 1L-2R, 2L-1R, 3L-OR	60.4375"	34.5"	143.5"	78"
4-Panel	OL-4R, 1L-3R, 2L-2R, 3L-1R, 4L-OR	79.5"	34.5"	190.375"	78"
5-Panel	OL-5R, 1L-4R, 2L-3R, 3L-2R, 4L-1R, 5L-OR	98.75"	34.5"	237.25"	78"
6-panel	OL-6R, 1L-5R, 2L-4R, 3L-3R, 4L-2R, 5L-1R, 6L-OR	118"	34.5"	284"	78"

Special sizes are available within the parameters shown on 1/16" increments.

Bifold Pass Through Window Panel and Glass Dimensions

Panel Config.	Passage-Panel Handing	Standard Sill		Low Profile Sill		Flush Sill	
		Panel	Glass	Panel	Glass	Panel	Glass
All	All	H = FH-4.5	H = FH-10.75	H = FH-3.625	H = FH-9.875	H = FH-3.125	H = FH-9.375
2-Panel	OL-2R, 2L-OR No passage panel (No Astragal)	$W=(FW\div 2)-1.625$	$W=(FW\div 2)-7.8125$	$W=(FW\div 2)-1.625$	$W=(FW\div 2)-7.8125$	$W=(FW\div 2)-1.625$	$W=(FW\div 2)-7.8125$
	1L-1R Active Right, Active Left	$W=(FW\div 2)-2.125$	$W=(FW\div 2)-8.3125$	$W=(FW\div 2)-2.125$	$W=(FW\div 2)-8.3125$	$W=(FW\div 2)-2.125$	$W=(FW\div 2)-8.3125$
3-Panel	OL-3R, 3L-OR Active Right, Active Left (No Astragal)	$W=(FW\div 3)-1.10417$	$W=(FW\div 3)-7.29167$	$W=(FW\div 3)-1.10417$	$W=(FW\div 3)-7.29167$	$W=(FW\div 3)-1.10417$	$W=(FW\div 3)-7.29167$
	1L-2R, 2L-1R Active Right, Active Left	$W=(FW\div 3)-1.4375$	$W=(FW\div 3)-7.625$	$W=(FW\div 3)-1.4375$	$W=(FW\div 3)-7.625$	$W=(FW\div 3)-1.4375$	$W=(FW\div 3)-7.625$
4-Panel	OL-4R, OL-OR No passage panel (No Astragal)	$W=(FW\div 4)-.875$	$W=(FW\div 4)-7.0625$	$W=(FW\div 4)-.875$	$W=(FW\div 4)-7.0625$	$W=(FW\div 4)-.875$	$W=(FW\div 4)-7.0625$
	1L-3R, 3L-1R Option of: Active Left/Passive Right, Passive Left/Active Right	$W=(FW\div 4)-1.125$	$W=(FW\div 4)-7.3125$	$W=(FW\div 4)-1.125$	$W=(FW\div 4)-7.3125$	$W=(FW\div 4)-1.125$	$W=(FW\div 4)-7.3125$
	2L-2R No passage panel (With Astragal)	$W=(FW\div 4)-1.125$	$W=(FW\div 4)-7.3125$	$W=(FW\div 4)-1.125$	$W=(FW\div 4)-7.3125$	$W=(FW\div 4)-1.125$	$W=(FW\div 4)-7.3125$
5-Panel	OL-5R, 5L-OR Active Right, Active Left (No Astragal)	$W=(FW\div 5)-.7625$	$W=(FW\div 5)-6.95$	$W=(FW\div 5)-.7625$	$W=(FW\div 5)-6.95$	$W=(FW\div 5)-.7625$	$W=(FW\div 5)-6.95$
	1L-4R, 4L-1R Active Left, Active Right	$W=(FW\div 5)-.9625$	$W=(FW\div 5)-7.15$	$W=(FW\div 5)-.9625$	$W=(FW\div 5)-7.15$	$W=(FW\div 5)-.9625$	$W=(FW\div 5)-7.15$
	2L-3R, 3L-2R Active Right, Active Left	$W=(FW\div 5)-.9625$	$W=(FW\div 5)-7.15$	$W=(FW\div 5)-.9625$	$W=(FW\div 5)-7.15$	$W=(FW\div 5)-.9625$	$W=(FW\div 5)-7.15$
6-Panel	OL-6R, OL-OR No passage panel (No Astragal)	$W=(FW\div 6)-.63542$	$W=(FW\div 6)-6.82292$	$W=(FW\div 6)-.63542$	$W=(FW\div 6)-6.82292$	$W=(FW\div 6)-.63542$	$W=(FW\div 6)-6.82292$
	1L-5R, 5L-1R Option of: Active Left/Passive Right, Passive Left/Active Right	$W=(FW\div 6)-.80208$	$W=(FW\div 6)-6.95958$	$W=(FW\div 6)-.80208$	$W=(FW\div 6)-6.95958$	$W=(FW\div 6)-.80208$	$W=(FW\div 6)-6.95958$
	2L-4R, 4L-2R No passage panel	$W=(FW\div 6)-.80208$	$W=(FW\div 6)-6.95958$	$W=(FW\div 6)-.80208$	$W=(FW\div 6)-6.95958$	$W=(FW\div 6)-.80208$	$W=(FW\div 6)-6.95958$
	3L-3R No passage panel	$W=(FW\div 6)-.80208$	$W=(FW\div 6)-6.95958$	$W=(FW\div 6)-.80208$	$W=(FW\div 6)-6.95958$	$W=(FW\div 6)-.80208$	$W=(FW\div 6)-6.95958$

All dimensions shown are inches.

To convert areas to square meters (m²), multiply square feet by 0.0929.



Design Data

Panel Configuration		Passage-Panel Handing
2-Panel	<p>OL-2R 2L-OR</p>	OL-2R 2L-OR No passage panel
	<p>1L-1R</p>	1L-1R Active Right, Active Left
3-Panel	<p>OL-3R 3L-OR</p>	OL-3R 3L-OR Active Right, Active Left
	<p>1L-2R 2L-1R</p>	1L-2R, 2L-1R Active Right, Active Left
4-Panel	<p>OL-4R 4L-OR</p>	4L-OR, OL-4R No passage panel
	<p>1L-3R 3L-1R</p>	1L-3R, 3L-1R Option of: Active Left/Passive Right, Passive Left/Active Right
	<p>2L-2R</p>	2L-2R No passage panel

(-) = Not Available

(1) Maximum performance when glazed with the appropriate glass thickness. Second Value, where shown, requires performance upgrade.

To convert areas to square meters (m²), multiply square feet by 0.0929.



Panel Configuration		Passage-Panel Handing
5-Panel	 0L-5R	0L-5R, 5L-0R Active Right, Active Left
	 5L-0R	
	 1L-4R	1L-4R, 4L-1R Active Left, Active Right
	 4L-1R	
	 2L-3R	2L-3R, 3L-2R Active Right, Active Left
	 3L-2R	
6-Panel	 0L-6R	6L-0R, 0L-6R No passage panel
	 6L-0R	
	 1L-5R	1L-5R, 5L-1R Option of: Active Left/Passive Right, Passive Left/Active Right
	 5L-1R	
	 2L-4R	2L-4R, 4L-2R No passage panel
	 4L-2R	
 3L-3R	3L-3R Option of Active/Passive or Passive/Active	



Detailed Product Description - Standard Windows

Frame

- Overall frame depth: 5-1/4".
- Knock-down frame assembly.
- Frame: [1" setback for nail fin for 4-1/4" wall depth and 1-3/8" setback for nail fin for 3-7/8" wall depth] [Block Frame for 5-1/4" wall depth].
- Sill options: [[Standard] [Low-profile] [Flush]].
- Interior and exterior frame surfaces are extruded rigid uPVC.

Window Panel

- 2-3/4" x 1-3/4" vinyl panel with internal aluminum reinforcement.
- Window panel consists of extruded, rigid uPVC.
- Panel members are mitered and heat-fused to provide a fully welded corner assembly.
- Contains sealed insulating glass.

Weatherstripping

- Foam-backed weatherstripping on the main frame.
- Dual interlocking weatherstripping on panel for superior air and thermal performance.

Glazing System

- Interior face-glazed sealed insulating glass.
- Standard Dual-Pane tempered glass, with optional Triple-Pane upgrade.
- 7/8" Dual-Pane insulating glass [Advanced Low-E coated [with argon]] [SunDefense™ Low-E coated [with argon]] [High Altitude¹].
or
- 1-1/4" Triple-Pane insulating glass [SunDefense™ Low-E coated [with argon]] [High Altitude¹].

Interior / Exterior

- Frame and panel members are [[White] [Beige] with integral color extruded throughout the profiles] -or- [[Brown] [Black]] laminate exterior, with White integral color extruded throughout the profiles on the interior.
- Sill: [[Bronze Anodized] [Mill]] finish options.
- All exposed PVC surfaces are smooth, glossy and uniform in appearance.

Hardware

- Interior handle; finish is [[White] [Black] [Satin Nickel]].
- Passive Handle; finish is [[Satin Nickel] [Black]].
- Hinge finishes: [[Bronze] [Stainless Steel]].
- Multipoint locking hardware [Stainless Steel] located on both active and inactive panels.

(1) Dual-Pane IG High Altitude glazing is available with or without Argon. Triple-Pane IG High Altitude glazing is only available without Argon.



Detailed Product Description - Premium Windows

Frame

- Overall frame depth: 5-1/4".
- Knock-down frame assembly.
- Frame: [1" setback for nail fin for 4-1/4" wall depth and 1-3/8" setback for nail fin for 3-7/8" wall depth] [Block Frame for 5-1/4" wall depth].
- Sill options: [[Standard] [Low-profile] [Flush]].
- Interior and exterior frame surfaces are extruded rigid uPVC.

Window Panel

- 3-3/4" x 1-3/4" vinyl panel with internal aluminum reinforcement.
- Window panel consists of extruded, rigid uPVC.
- Panel members are mitered and heat-fused to provide a fully welded corner assembly.
- Contains sealed insulating glass.

Weatherstripping

- Foam-backed weatherstripping on the main frame.
- Dual interlocking weatherstripping on panel for superior air and thermal performance.

Glazing System

- Interior face-glazed sealed insulating glass.
- Standard Dual-Pane tempered glass, with optional Triple-Pane upgrade.
- 7/8" Dual-Pane insulating glass [Advanced Low-E coated [with argon]] [SunDefense™ Low-E coated [with argon]] [High Altitude,].
-or-
- 1-1/4" Triple-Pane insulating glass [SunDefense™ Low-E coated [with argon]] [High Altitude,].

Interior / Exterior

- Frame and panel members are [[White] [Beige] with integral color extruded throughout the profiles].
-or-
- Brown laminate exterior, with White integral color extruded throughout the profiles on the interior.
-or-
- Black laminate exterior, with [Black laminate interior] [White integral color extruded throughout the profiles on the interior].
- Sill: [[Bronze Anodized] [Mill]] finish options.
- All exposed PVC surfaces are smooth, glossy and uniform in appearance.

Hardware

- Interior handle; finish is [[White] [Black] [Satin Nickel]].
- Passive Handle; finish is [[Satin Nickel] [Black]].
- Hinge finishes: [[Bronze] [Stainless Steel]].
- Multipoint locking hardware [Stainless Steel] located on both active and inactive panels.

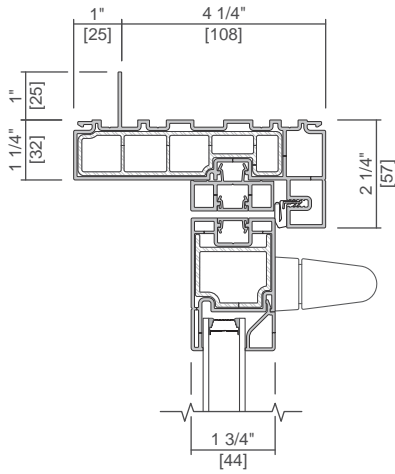


250 Series Standard and Premium Bifold Pass Through Windows

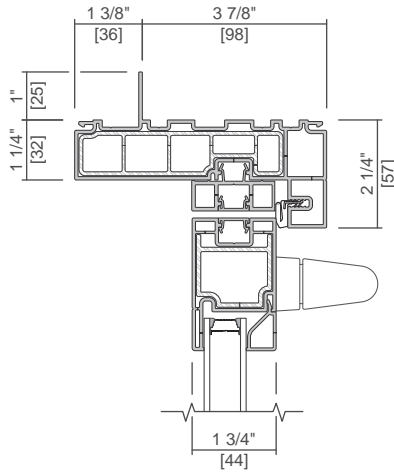
Unit Sections - Frame Types

NEW CONSTRUCTION FRAME

Standard Nailing Fin

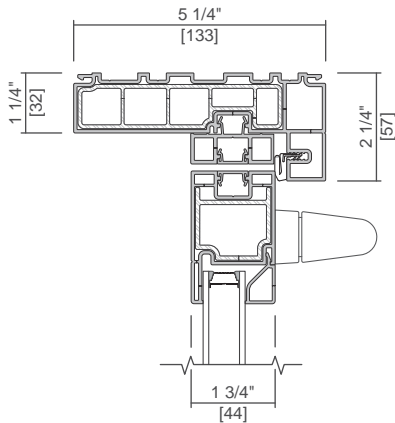


Standard Fin 1-3/8" Setback



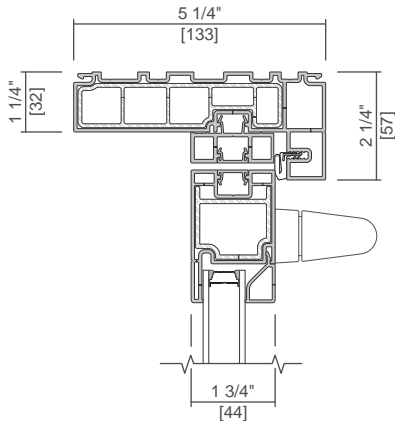
REPLACEMENT FRAME

Standard Block Frame

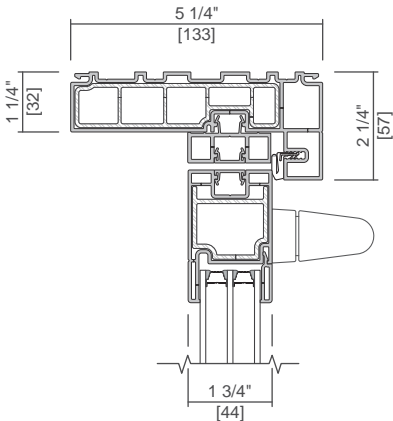


GLAZING OPTIONS

11/16" IG



1" Triple IG



Scale 3" = 1' 0"

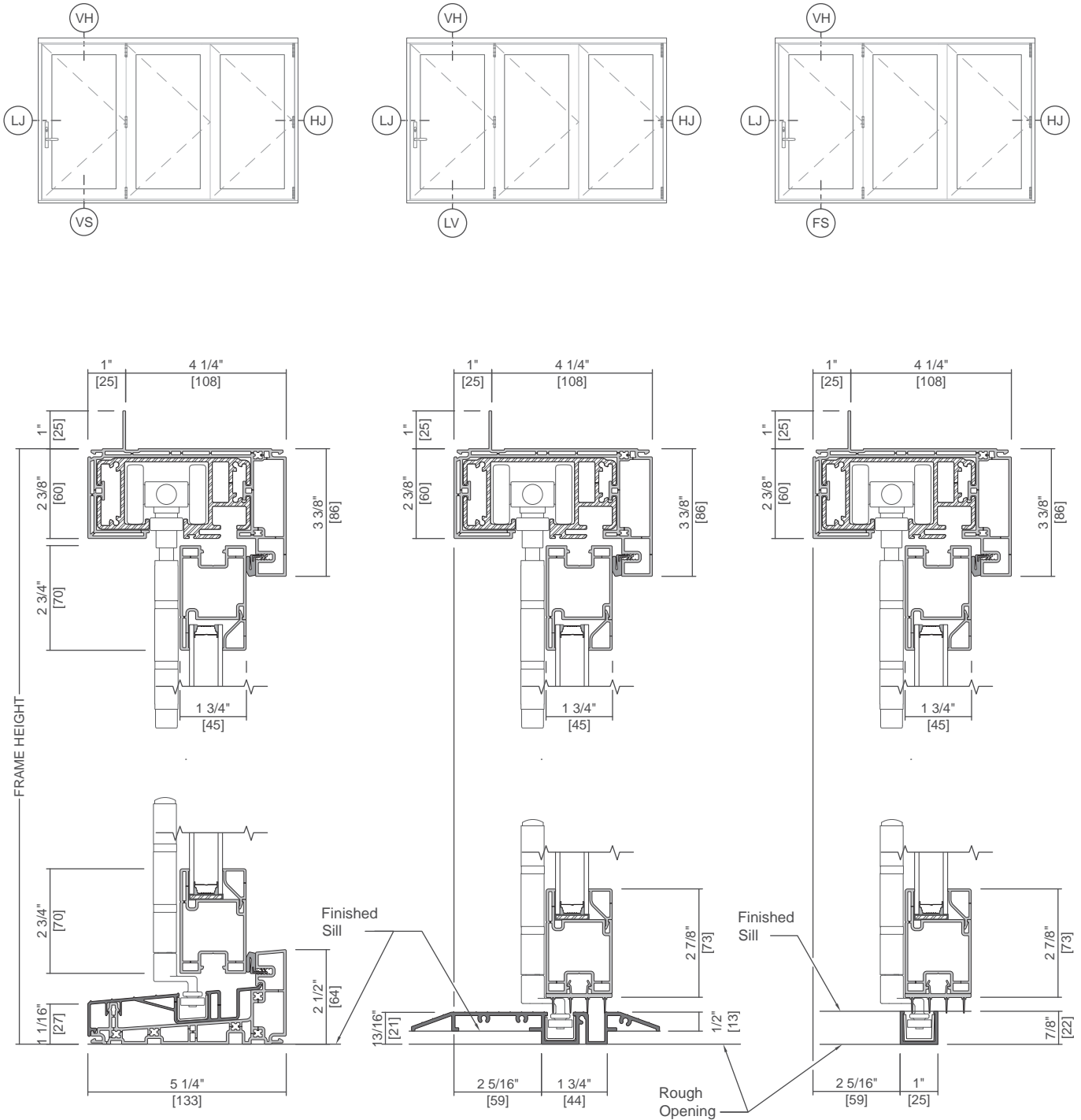
All dimensions are approximate.

Standard Window Panel shown, common frame is shared with Premium.



250 Series Standard and Premium Bifold Pass Through Windows

Unit Sections - 1" Fin Setback



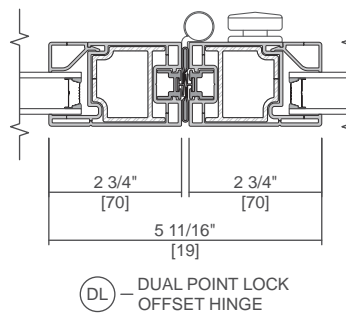
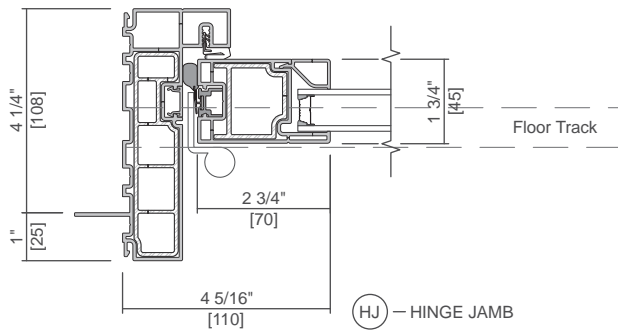
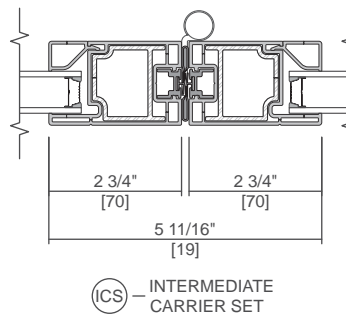
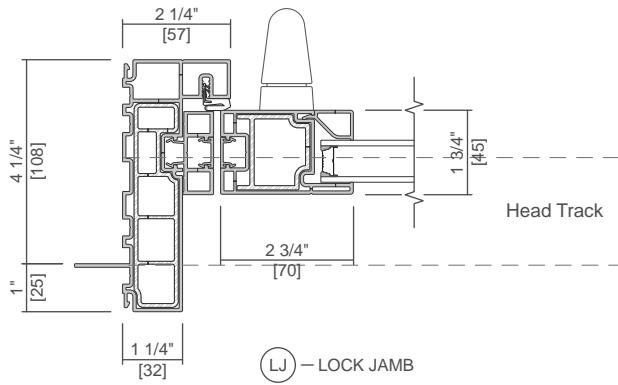
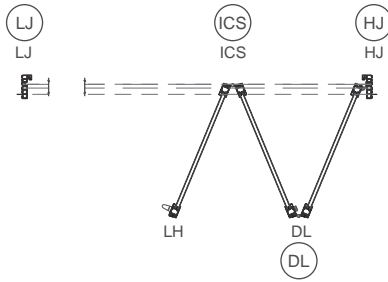
Scale 3" = 1' 0"

All dimensions are approximate.



250 Series Standard and Premium Bifold Pass Through Windows

Unit Sections - 1" Fin Setback

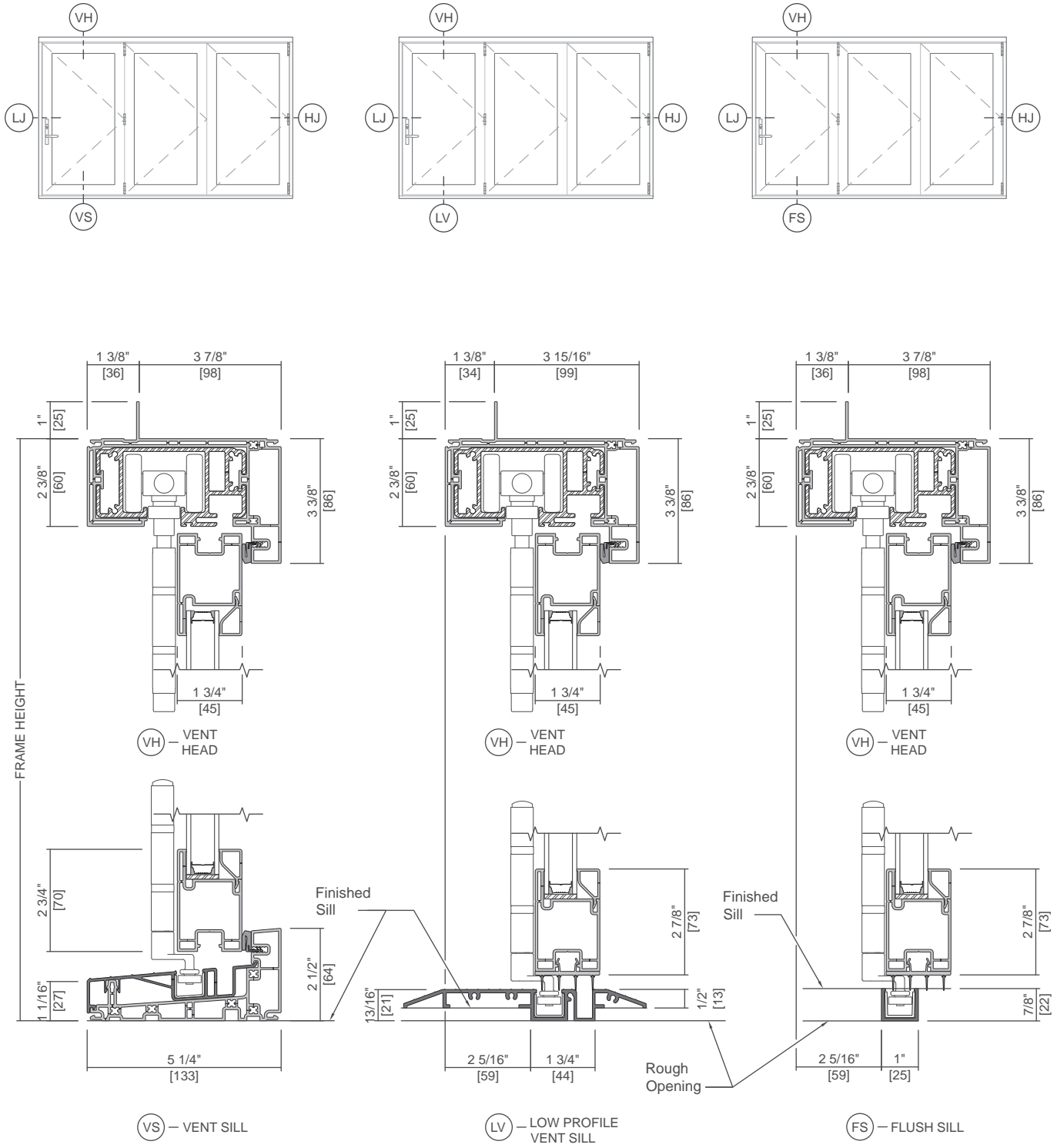


Scale 3" = 1' 0"
All dimensions are approximate.



250 Series Standard and Premium Bifold Pass Through Windows

Unit Sections - 1-3/8" Fin Setback



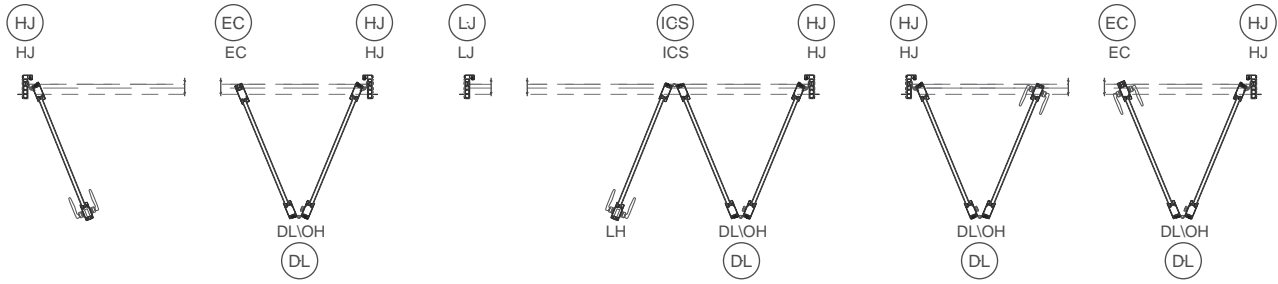
Scale 3" = 1' 0"

All dimensions are approximate.



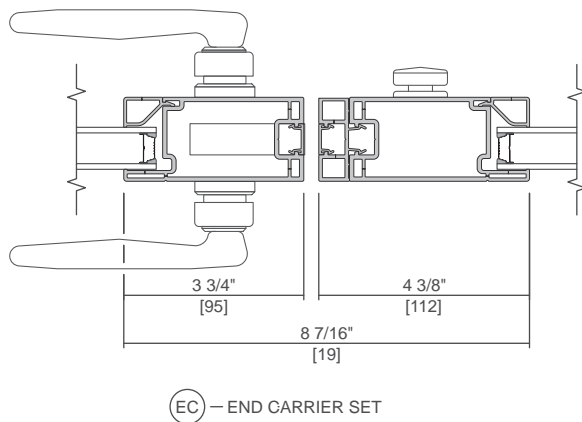
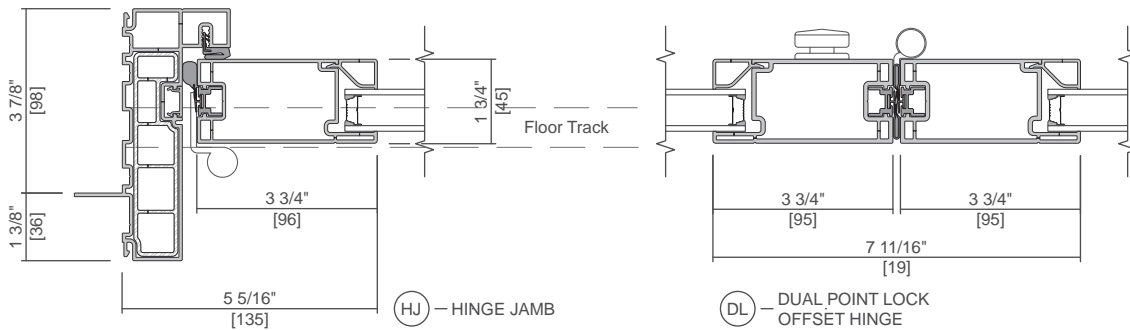
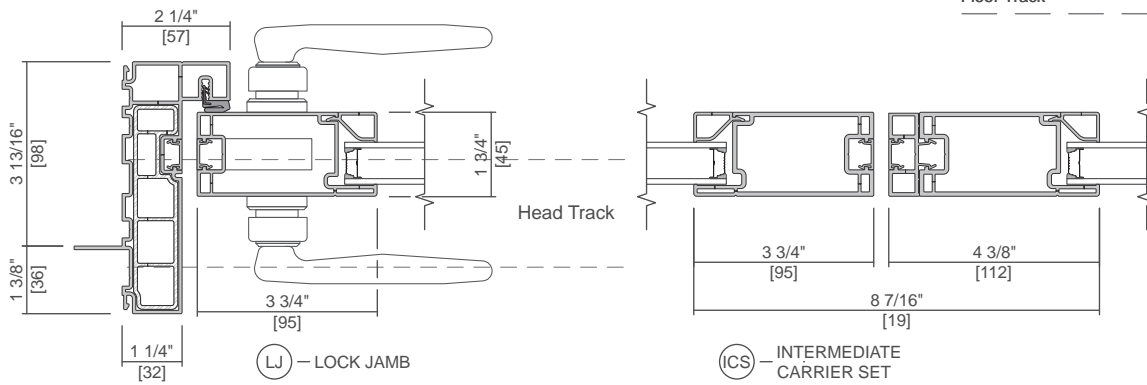
250 Series Standard and Premium Bifold Pass Through Windows

Unit Sections - 1-3/8" Fin Setback



Head Track

Floor Track



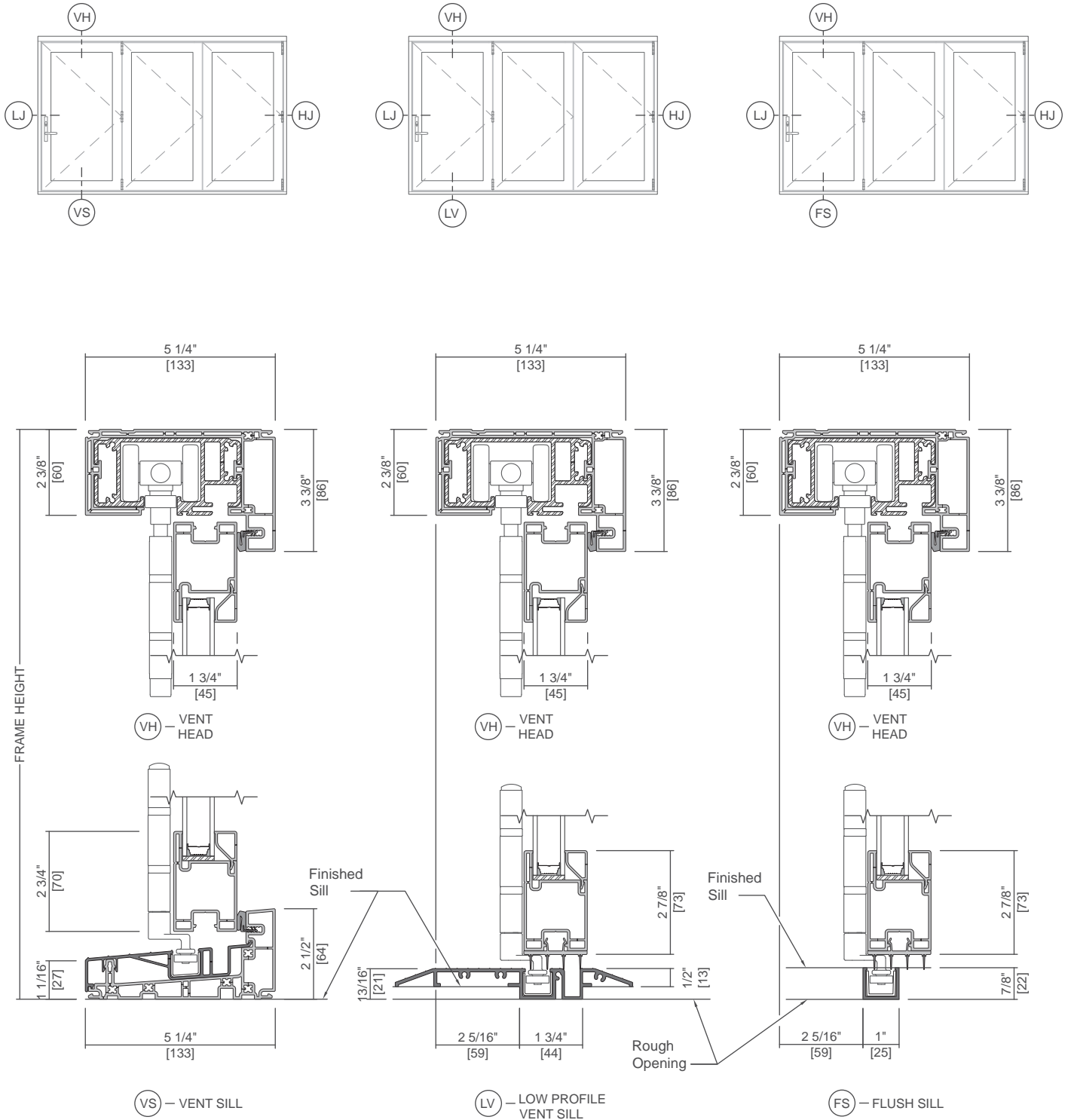
Scale 3" = 1' 0"

All dimensions are approximate.



250 Series Standard and Premium Bifold Pass Through Windows

Unit Sections - Block Frame



Scale 3" = 1' 0"

Combinations require reinforcing mullions between units.

All dimensions are approximate.



250 Series Standard and Premium Bifold Pass Through Windows

Unit Sections - Block Frame

