



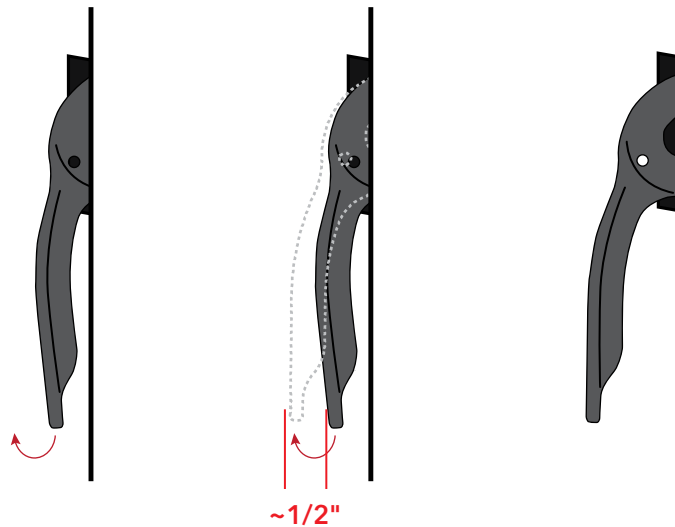
# Construction Lock Lever Removal for Awning/Casement

## Service Instruction

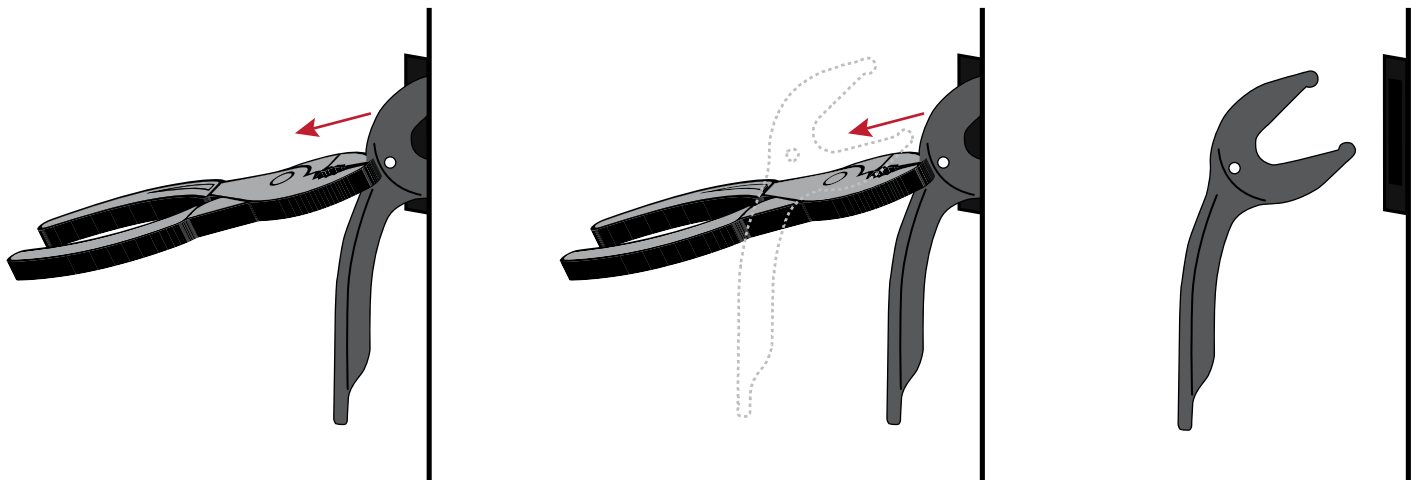
### Tools Required:

- Pliers or needle-nose pliers

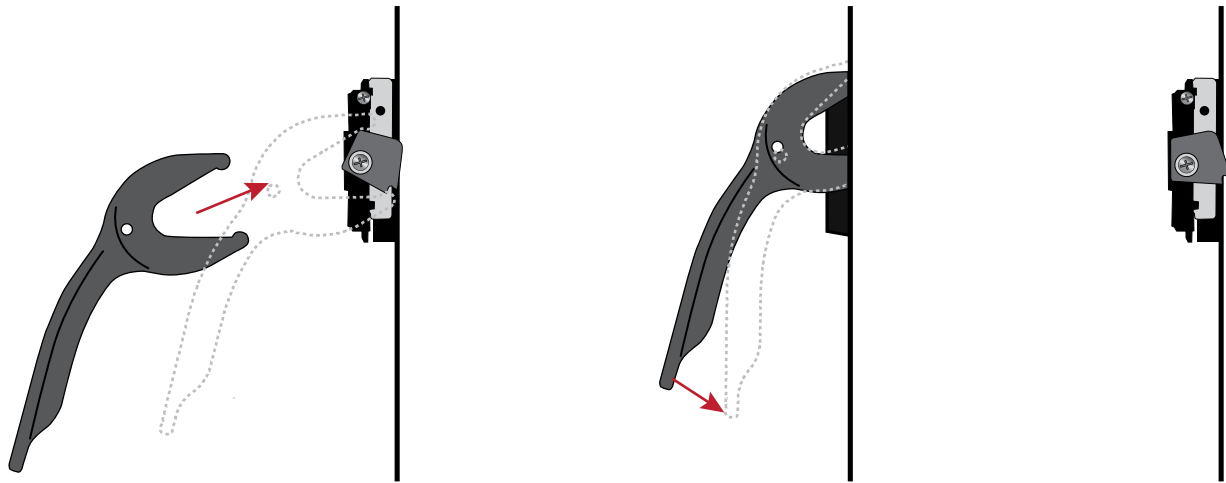
1. Lift the construction lock lever up approximately 1/2".



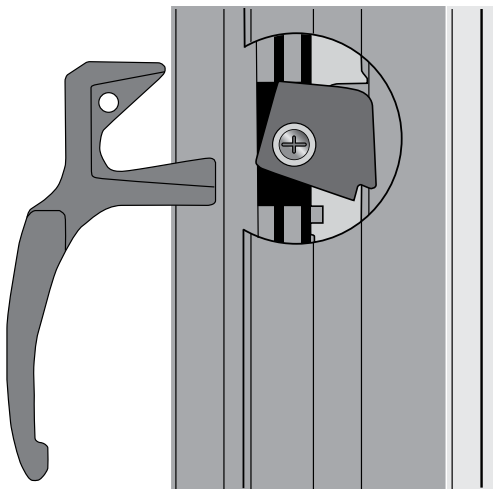
2. Carefully grasp the construction lock lever with a pliers, use care to prevent damage to the wood. Firmly pull the construction lock lever out and down to remove it from the window. If the lock lever cannot be removed, adjust the construction lock lever position slightly and try pulling it out again.



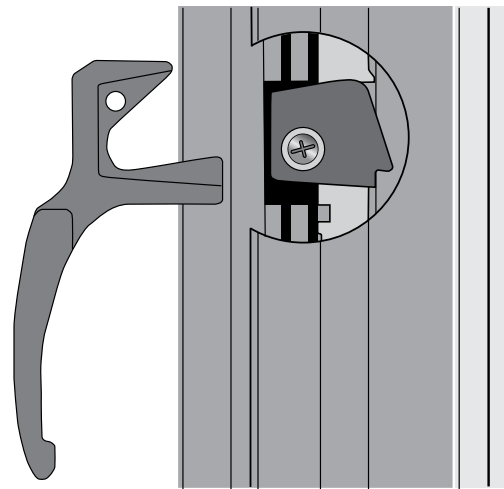
3. After the construction lock lever is removed; if the new (decorative) lock lever cannot be inserted; reinsert the construction lock lever just far enough to contact the internal lock cam but not so it snaps back in place. Gently rotate the lever toward the sill to adjust alignment.



If the lock mechanism cam is not in the fully locked position after the construction lock lever is removed, the new (decorative) lock lever will not be able to be installed.



**Lock mechanism rotated slightly.  
Lock lever won't slide on.**



**Lock mechanism fully locked.  
Lock lever can be pushed straight on.**