



IMPORTANT SAFETY AND PRODUCT INFORMATION – WINDOW

CAUTION: Many windows in older homes are painted with lead-based paint. Removal of old windows may disturb this paint. Proper precautions must be taken to minimize exposure to dust and debris. Consult state or local authorities and/or go to www.epa.gov/lead for more information.



WARNING: To ensure safety and security and help prevent property damage, including possible damage to your window or door, close and lock windows and doors any time they are not being used for venting on a nice day, and particularly during high winds or rain.

Important Notice

Because all construction must anticipate some water infiltration, it is important that the wall system be designed and constructed to properly manage moisture. Pella Corporation is not responsible for claims or damages caused by anticipated and unanticipated water infiltration; deficiencies in building design, construction and maintenance; failure to install Pella products in accordance with Pella's installation instructions; or the use of Pella products in wall systems which do not allow for proper management of moisture within the wall systems. The determination of the suitability of all building components, including the use of Pella products, as well as the design and installation of flashing and sealing systems are the responsibility of the Buyer or User, the architect, contractor, installer, or other construction professional and are not the responsibility of Pella.

Pella products should not be used in barrier wall systems which do not allow for proper management of moisture within the wall systems, such as barrier Exterior Insulation and Finish Systems (EIFS) (also known as synthetic stucco) or other non-water managed systems. Except in the states of California, New Mexico, Arizona, Nevada, Utah and Colorado, Pella makes no warranty of any kind on and assumes no responsibility for Pella windows and doors installed in barrier wall systems. In the states listed above, the installation of Pella Products in barrier wall or similar systems must be in accordance with Pella's installation instructions. Product modifications that are not approved by Pella Corporation will void the warranty.

Care and Maintenance

Care and maintenance information is available by contacting your local Pella retailer. This information is also available at www.pella.com.

Cleaning Instructions

GLASS: Remove any protective film and labels and clean the glass, using a soft, clean, grit-free cloth and mild soap or detergent. Be sure to remove all liquid by wiping dry or use a clean squeegee.

FACTORY FINISHED PRODUCT: Pella product that has been prefinished with stain or paint from the factory requires no additional finishing. Clean the surface with mild soap and water.

PELLA® ALUMINUM CLAD OR IMPERVIA FRAMES: The interior and exterior frame and sash are protected with a tough factory finish. Clean this surface with mild soap and water. Stubborn stains and deposits may be removed with mineral spirits. DO NOT use abrasives. DO NOT scrape or use tools that might damage the surface.

ENCOMPASS BY PELLA®, PELLA® 150 SERIES AND PELLA® 250 SERIES AND WINDOWS FRAMES: The vinyl frame may be cleaned using the same method as the glass. For stubborn dirt, a "non-abrasive" cleaner such as Bon-Ami® or Soft Scrub® may be used. Do not use solvents such as mineral spirits, toluene, xylene, naphtha or muriatic acid as they can dull the finish, soften the vinyl and/or cause failure of the insulated unit seal. Do not use Isopropyl Alcohol on laminated surfaces as it will damage the finish. Keep door tracks clear of dirt and debris. Keep weep holes open and clear of obstructions.

DO NOT use abrasives. DO NOT scrape or use tools that might damage the surface.

Notice: DO NOT use inappropriate solvents or brickwash or cleaning chemicals. If you do, permanent damage can result and the product failure, loss or damage would not be covered by the Limited Warranty.

Interior Finish (Wood Windows)

Paint or finish immediately after installation.

If products cannot be finished immediately, cover with clear plastic to protect from dirt, damage and moisture. Remove any construction residue before finishing. Sand all wood surfaces lightly with 180 grit or finer sandpaper. DO NOT use steel wool. BE CAREFUL NOT TO SCRATCH THE GLASS. Remove sanding dust. Pella products must be finished per the below instructions; failure to follow these instructions voids the Limited Warranty.

Note: To maintain proper product performance do not paint, finish or remove the weatherstripping, mohair dust pads, gaskets or vinyl parts. Air and water leakage will result if these parts are removed. After finishing, allow venting windows and doors to dry completely before closing them. If paint, stain or finish gets on the weatherstripping, wipe it off immediately with a damp cloth.

Window Cleaning and Prep Instructions for Unfinished or Primed windows: Dry wipe dust from windows gently. Examine window for possible smudges or fingerprints made from normal handling or construction. To remove smudges, lightly wipe surface with warm water. Scuff sand with light grade sand paper or abrasive pad (220 grit or higher). Rinse surface with warm water. Let window surfaces dry completely before applying finish.

Finish the windows as soon as possible after installation.

- On casement and awnings, it is optional to paint, stain or finish the vertical and horizontal sash edges.
- On single-hungs and double-hungs, do not paint, stain or finish the vertical sash edges, any finish on the vertical sash edges may cause the sash to stick; it is optional to paint, stain or finish the horizontal sash edges.

Pella Corporation is not responsible for interior paint and stain finish imperfections for any product that is not factory-applied by Pella Corporation. For additional information on finishing see the Pella Owner's Manual or go to www.pella.com.

The use of unapproved finishes, solvents or cleaning chemicals may cause adverse reactions with door materials. Pella will not be responsible for problems caused by the use of unapproved materials. If in doubt, contact your local retailer or representative.

Exterior Finish of Existing Frame (Pocket Replacement)

It is the responsibility of the homeowner, contractor or installer to ensure any exposed unfinished wood is covered or finished. Possible methods include, however are not limited to, covering with aluminum coil stock or painting.



FULL FRAME OR SASH REMOVAL WHEN PREPARING TO INSTALL A NEW WINDOW WITH BRICKMOULD OR FLUSH FLANGE

CAUTION: Many windows in older homes are painted with lead-based paint. Removal of old windows may disturb this paint. Proper precautions must be taken to minimize exposure to dust and debris. Consult state or local authorities and/or go to www.epa.gov/lead for more information.

REMEMBER TO USE APPROPRIATE PERSONAL PROTECTIVE EQUIPMENT.

Apply adhesive film or duct tape to the glass to prevent breakage.

1 ALUMINUM SASH AND/OR FRAME REMOVAL

- A. **Score the paint or varnish** between the interior trim and the wall or between the drywall return and the window frame to minimize damage. (Frame removal only).
- B. **Remove the interior trim.**
- C. **Score the sealant or paint** between the exterior siding or brick and the window frame.
- D. **Remove the screen and vent sash** from the old window. If it is not removable, see steps G-I.
- E. **Remove the division bar** by removing the screws at the ends or cutting it with a reciprocating saw.
- F. **Remove the other sash/panel.** Remove any screws holding the fixed sash. Slide it and lift it out of the channel (sliding windows) or tilt it and release it from the balance assembly (hung windows).

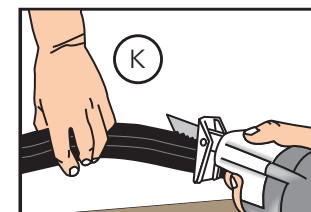
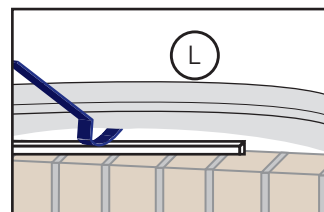
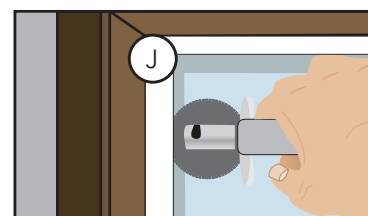
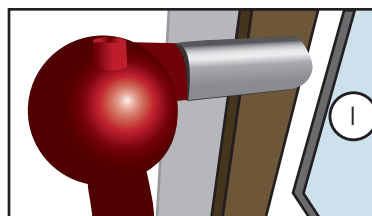
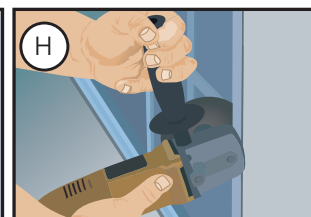
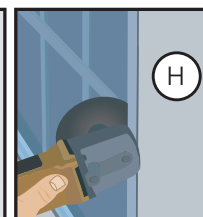
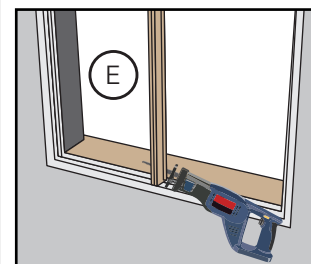
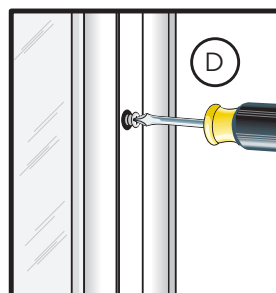
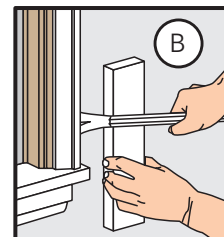
If the sashes are not removable or the glass is sealed to the frame:

- G. **Remove the glazing bead** using a putty knife or small pry bar.
- H. **For single pane windows with divided lights (grids).** Use an angle grinder with a cut-off wheel to cut the end of the bars where they intersect with the sash or frame. This will allow the window glass to be removed more quickly.
- I. **Heat the glazing seal** using an electric heat gun.
- J. **While applying heat, press a de-glazing wheel** between the glass and sash or frame. Continue around the perimeter of the sash or panel. Apply light, constant pressure to separate the glass from the sash or frame. Dispose or recycle the glass properly.

NOTE: Wear appropriate personal protective equipment and keep the heat source away from flammable materials.

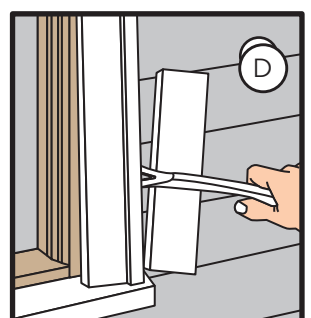
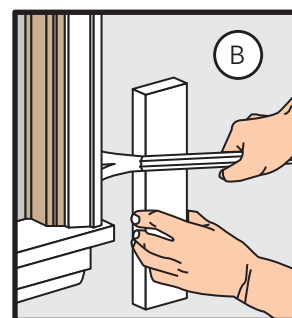
Stop here for pocket replacement, complete steps K-L for full frame replacement.

- K. **Cut through the frame using a reciprocating saw.**
- L. **Pry the frame away from the brick or siding.** Use a block of wood under the pry bar to protect interior or exterior finishes. Dispose or recycle of the frame materials properly.



2 BRICKMOULD FRAME REMOVAL

- A. **Score paint or varnish** between the interior trim and the wall with a sharp utility knife.
NOTE: This will minimize the damage to the interior wall and trim.
- B. **Remove the interior trim.** Remove the interior trim from all the four sides of the window including the stool at the bottom of the window. If the interior trim is being reused, pull the nails out through the back side of the board with nipper pliers.
- C. **Cut the exterior sealant line** between the exterior brickmould or trim and the exterior siding or wall cladding.
- D. **Remove the exterior brickmould or flat trim.**
CAUTION: Some windows may come out of the opening as the exterior trim is removed.
NOTE: DO NOT disturb existing head flashings.
- E. **Remove the window frame.**



Consult with local providers and authorities to recycle or properly dispose of old window components.



PREPARING FOR BRICKMOULD OR FLUSH FLANGE WINDOW INSTALLATION

YOU WILL NEED TO SUPPLY:

- Moisture resistant shims/spacers
- Fasteners (see nail fin anchor instructions and tables at the end of this booklet)
- Closed cell foam backer rod/sealant backer
- Pella® SmartFlash™ foil backed butyl window and door flashing tape or equivalent
- Low expansion, low pressure polyurethane insulating window and door foam sealant. **DO NOT** use high pressure or latex foams.
- Pella Window and Door Installation Sealant or equivalent high quality, multi-purpose sealant

TOOLS REQUIRED:

- Tape measure
- Level
- Square
- Hammer
- Stapler
- Scissors or utility knife
- Small flat blade screwdriver
- Sealant Gun
- Screw Gun with a Phillips Driver bit
- Drill with 1/8", 5/32", 3/16" & 3/8" drill bits
- 1/8" Allen wrench

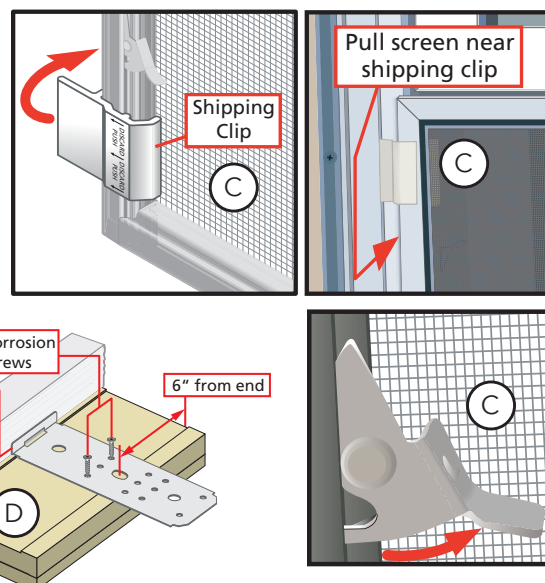
Other construction materials may be required. Read and understand the instructions and inspect the wall conditions before you begin.

Store windows in upright position, out of direct sunlight.

INSTALLATION WILL REQUIRE (2) OR MORE PERSONS FOR SAFETY REASONS.

Preparing for Installation

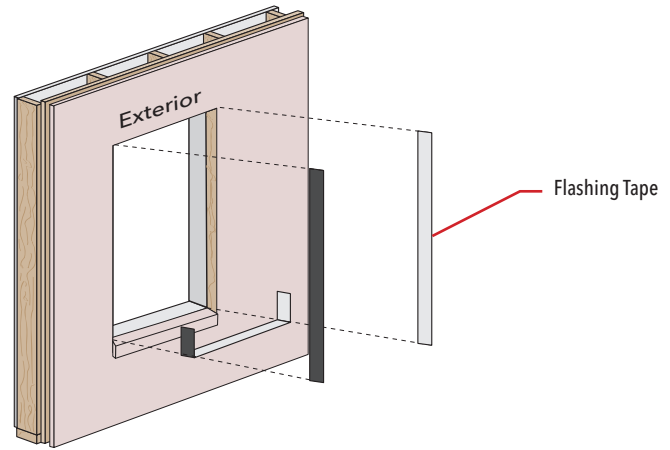
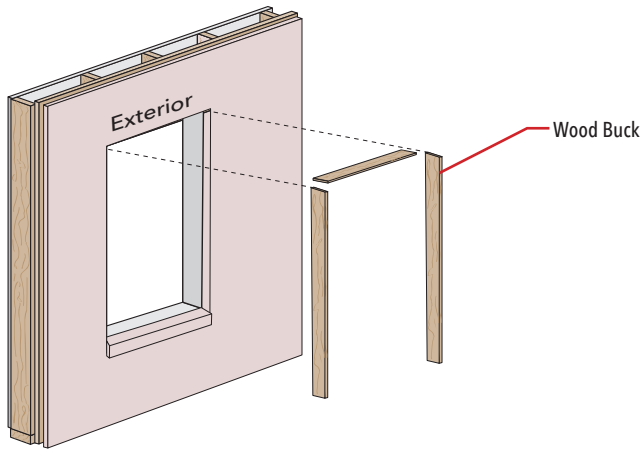
- Remove plastic wrap and cardboard packaging** from the window. On laminate units, remove protective film from parts. Do not cut checkrail bands (if present) or remove plastic or foam shipping spacers located between the window sash and frame. **DO NOT** open the window until it is securely fastened.
- Inspect the product** for any damage such as cracks, dents or scratches. **DO NOT** install damaged windows.
- Remove screens and hardware** (if necessary). Label them and set aside in a protected area.
Windows with Half Screens: From the exterior, pull one side of the screen near the shipping clips until the clips disengage from the frame. Rotate the shipping clips toward the exterior of the screen until they snap free from the screen.
 Half screens of some vinyl windows can be removed from the interior.
- Pre-Drill Installation holes or install clips** (if necessary). See frame anchor instructions at the end of this booklet."
- Before Installation**, remove dirt and debris from all surfaces of the opening.
- Read the entire instruction before proceeding.**



These instructions were developed and tested for use with wall systems designed to manage water. These instructions are not to be used with any other construction methods or window frame types. Installation instructions for use with other construction methods or frame types may be obtained from Pella Corporation, your local Pella retailer or www.installpella.com. Building designs, construction methods, building materials, and site conditions unique to your project may require an installation method different from these instructions and/or additional care. Determining the appropriate installation method is the responsibility of you, your architect, or construction professional.



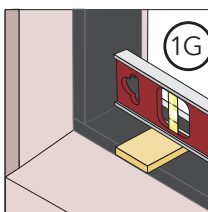
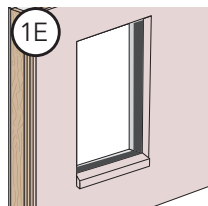
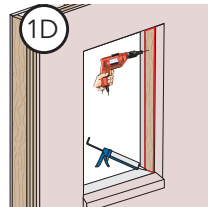
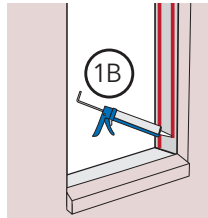
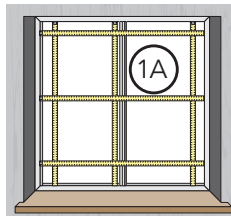
FULL FRAME REPLACEMENT IN MASONRY CONSTRUCTION WITH STUCCO FOR FLUSH FLANGE WINDOWS



1 Prepare the Opening

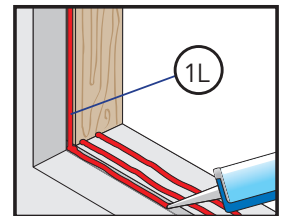
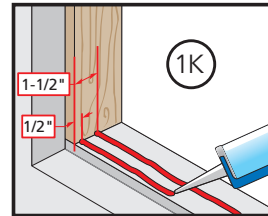
Refer to the full frame removal instruction at the beginning of this booklet.

- A. **Measure the width and height of the opening.**
The window must be approximately 1/2" smaller in width and height.
If replacing a wood buck, trim back any finish materials to accommodate the new wood buck.
- B. **Apply 2 beads of sealant** to the masonry opening where the wood buck will be attached.
- C. **Fasten the treated wood buck** to the masonry opening using code-approved fasteners.
- D. **Apply sealant** at the corners of the wood buck and at the intersection of the wood buck and stucco.
- E. **Apply flashing tape from the stool over the top of the pre-cast concrete sill and 6" up each side.**
- F. **Apply water resistant coating** or flashing tape over the wood buck. If using liquid applied flashing, allow it to dry according to the manufacturer's recommendations before proceeding.
- G. **Install and level sill shims.** Place 1" wide x 1/4" to 3/8" thick shims 1/2" from each side. Keep shims back 1/2" from interior face of window. Place additional shims under each mullion and sliding window interlocker.
For vinyl windows, add shims so maximum spacing is 18".
- H. **Attach shims to prevent movement after they are level.**
NOTE: Improper placement of shims may result in bowing the bottom of the window.
- I. **Measure the opening in the stucco** and the size of the window to the tip of the flanges. If necessary, trim the flange.
For Vinyl windows with 1/2" or 5/8" flanges on Pre-Cast Concrete sills use steps 1J, 1K, and 1L if there is not enough space for shims. If sill shims were used, skip to step 2.
- J. **Apply a continuous, 3/8" tall bead of sealant** on the surface of the buck where the Flush Flange will be placed at the sides and top only.
Do NOT apply sealant at the sill.
Proceed to Step 2.



1 Prepare the Opening (continued)

- K. **Place two 3/8" beads of sealant on the precast sill.** Place the first bead 1-1/2" from the exterior edge of the sill. Place the second bead 1/2" from the exterior edge of the sill.
- L. **Place a bead of sealant on the front edge of the precast sill,** connecting it to the bead of sealant on the surface of the wood buck.



2 Prepare the Window (continued)

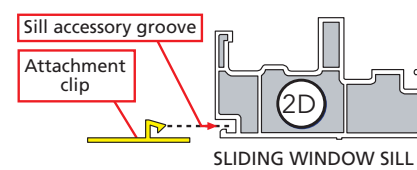
Frame Screw Installation

- A. **Prepare the frame (if applicable).**
Remove interior frame covers—Impervia casement.
- B. **Drill pilot holes** (if necessary) in the new window frame. See the anchor instructions at the end of this booklet.
NOTE: WHERE POSSIBLE, USE FRAME SCREWS AT THE SILL TO AVOID PENETRATING THE INTERIOR SEAL. DO NOT SCREW THROUGH THE SILL WHEN A SILL TRACK IS PART OF THE WINDOW'S WEEP SYSTEM.

Clip Installation

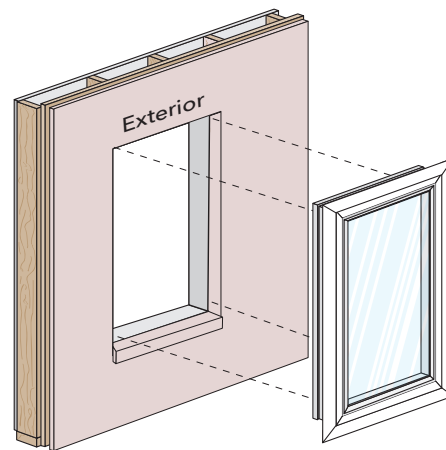
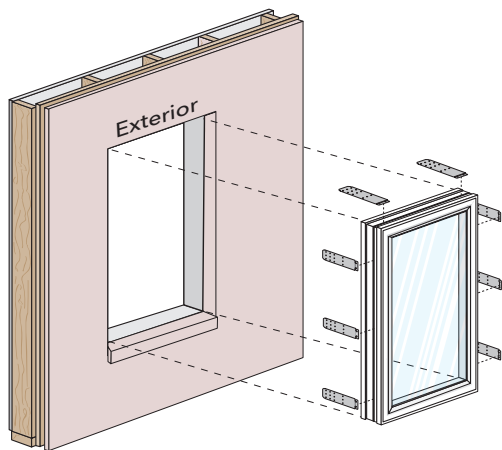
- C. **Pre-bend clips** if anchors will be installed into the interior wall surface (Metal clips only).
- See the anchor spacing instructions at the end of this booklet.**
- D. **Secure clips to the window frame:**

Encompass by Pella® / Pella® 150 Series / Pella® 250 Series





FULL FRAME REPLACEMENT IN MASONRY CONSTRUCTION WITH STUCCO FOR FLUSH FLANGE WINDOWS (CONTINUED)



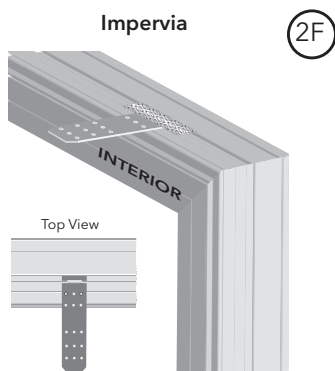
2 Prepare the Window (continued)

Pella® Impervia®

- E. Slide clips into the frame grooves.

NOTE: Pre-bend clips if anchors will be installed into the interior wall surface (Metal clips only).

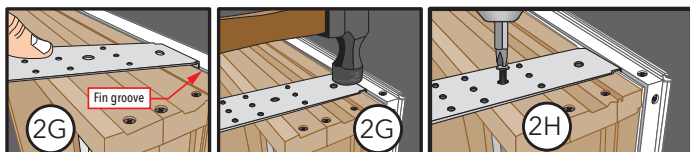
- F. Secure the clips to the frame. Use a small piece of flashing tape to prevent the clips from sliding out of place (Pella® Impervia®).



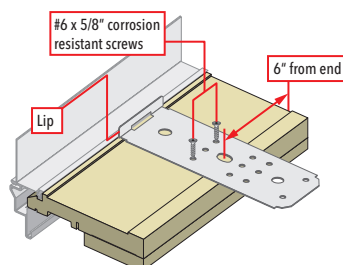
Architect Series (850) and Pella® Lifestyle Series

- G. Install the clips into the fin grooves. Start one corner of the clip in the fin groove. Tap the corner into the fin groove with a hammer, then continue to tap the other corner until the clip is locked into the groove.

- H. Secure the clips to the frame. Drive one #8 x 5/8" screw through the slotted hole in the center of the clip.

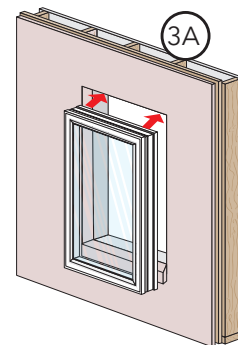


Alternatively, it is acceptable to use two #6 x 5/8" screws through the clip with the clip on its back and not engaged in the fin groove.



3 Set and Fasten the Window

- A. Insert the window into the opening by placing the front edge of the window sill on the opening sill and tilting the window up. Center the window between jambs.
- B. Place sealant under each clip (if applicable).
- C. Place shims and begin driving screws at each predrilled hole in the window frame or each clip. Install masonry screws at least 2" from wall edge.



Refer to the anchor instructions at the end of this booklet.

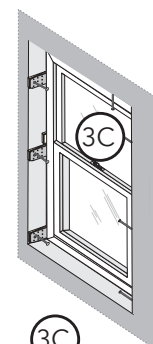
NOTE: Ensure the window flange or brickmould remains firmly embedded in sealant.

Keep shims 1/2" from the interior surface of the window to allow for a continuous interior seal.

- D. Check window operation.

Vent Awning and Casement: Refer to applicable hardware instructions. Unlock and open the window to remove the shipping spacers. Open and close the window to test for proper operation.

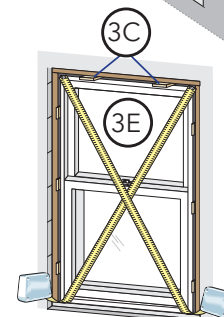
Double-Hung: Cut the checkrail bands (if applicable) and remove shipping spacers. Open, close and tilt the sashes to test for proper operation. Check for equal sash to frame reveal from top to bottom.



- E. Check for plumb, level, and square. Make any necessary adjustments to shims and finish installing frame screws or clip anchors.

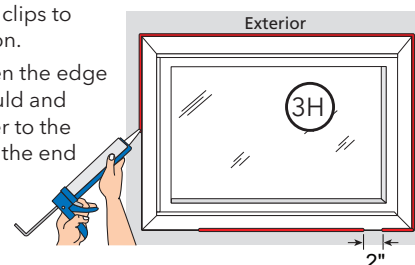
- F. Adjust the screw jacks (if applicable) with a screwdriver. Turn clockwise to move the frame toward the sash.

Tilt the lower sash inward to locate the jamb jacks in the interior balance channel near the checkrail.



- G. Install interior sealant. Refer to the interior sealant instructions at the end of this booklet. Use additional sealant around clips to prevent air and water infiltration.

- H. Install exterior sealant between the edge of the flush flange or brickmould and the finished wall material. Refer to the exterior sealant instructions at the end of this booklet.

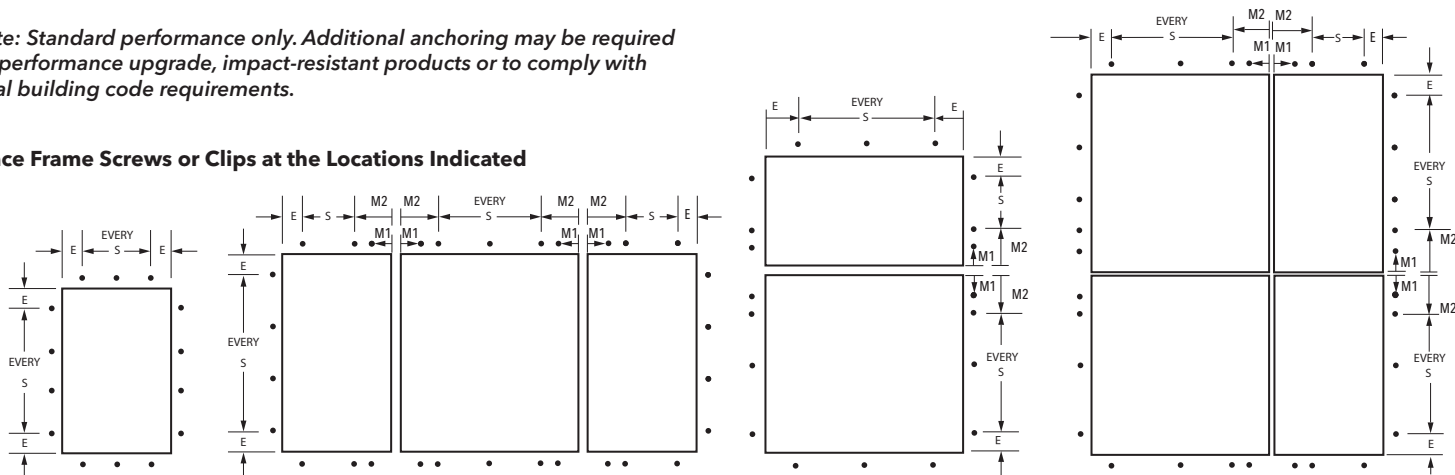




FLUSH FLANGE AND BRICKMOULD FRAME WINDOW ANCHOR INSTRUCTIONS

Note: Standard performance only. Additional anchoring may be required for performance upgrade, impact-resistant products or to comply with local building code requirements.

Place Frame Screws or Clips at the Locations Indicated

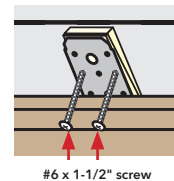


ARCHITECT SERIES® (850) AND PELLA® LIFESTYLE SERIES WINDOW ANCHOR SPACING INSTRUCTIONS

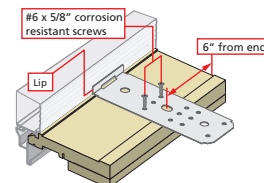
Product	Edge Spacing (E)	Max. Intermediate Spacing (S)	First Mullion Anchor (M1)	Second Mullion Anchor (M2)	Fastener	Special Notes
					Wood **	
Casement/Awning	6"	16"	3"*	6"	#8x3" Finish Screw	
Double- or Single-Hung	6"	16"	3"*	6"	#8x3" Finish Screw	For windows with integrated Rolscreen® retractable screen, drive jamb screws at each factory pre-punched hole in the jamb liner. Add fasteners as necessary, driving the head past flush of the jamb liner. Avoid Rolscreen components in the head and sill.
Fixed Frame	6"	16"	3"*	6"	#8x3" Finish Screw	
Monumental DH > 54" x 96"	6" (head)	16" (head)	3" *	6" *	#8 x 3" Screw	Remove sashes and jamb liners. Drive 1 screw through each jamb liner support clip (top, bottom, checkrail and center of each sash). Drive 2 additional screws through the frame (or secure clips) 3" above and below the checkrail on each jamb. Drive additional screws through the frame (or secure clips) centered between each jamb liner support clip.

* M1 anchor required if design pressure exceeds 20 psf.

** For light gauge steel framing, use #10 self-drilling/self-tapping screws; For concrete or masonry, use 3/16" masonry screws with 1-1/4" minimum embedment.

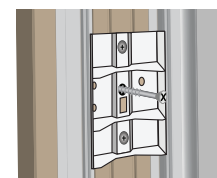


#6 x 1-1/2" screw



1/8" Pilot Hole Locations

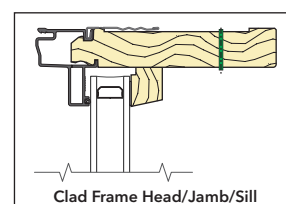
	Casement/Awning	Lifestyle Series Double-Hung	Architect Series Double-Hung	Monumental-Hung
Head				
Jamb				
Sill				



Monumental Hung jamb liner support clip



Pry off Monumental Double-Hung jamb liner



Clad Frame Head/Jamb/Sill



FLUSH FLANGE AND BRICKMOULD FRAME WINDOW ANCHOR INSTRUCTIONS (CONT.)

Note: Standard performance only. Additional anchoring may be required for performance upgrade, impact-resistant products or to comply with local building code requirements.

PELLA® IMPERVIA WINDOW ANCHOR SPACING INSTRUCTIONS

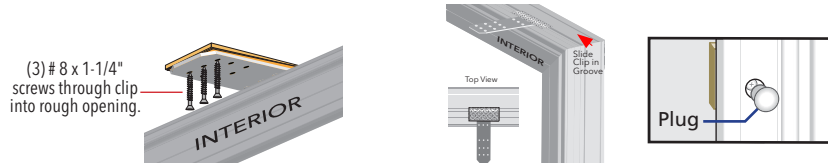
Product	Edge Spacing (E)	Max. Intermediate Spacing (S)	First Mullion Anchor (M1)	Second Mullion Anchor (M2)	Fastener	Special Notes
					Wood**	
Casement/Awning	6"	16"	None	6"	#8 x 3" Pan Head (provided)	Head and Sill anchors not required when frame width < 42".
Single-Hung/Sliding Window	6"	16"	None	6"	#8 x 3" Pan Head (provided)	Do not use Frame screws through the sill.
Double-Hung	6"	16"	None	6"	#8 x 3" Pan Head (provided)	Sill frame screw anchors are not required.
Direct Set	4"	15"	None	4"	#10x3" Pan Head (Provided)	Remove interior frame covers by inserting a putty knife as indicated and rotating to slide the cover interior and disengage from the glass stop. Install screws at pre-marked locations. Utilize 5/32" pilot drill and for masonry applications pilot drill 3/8" pilot hole through interior wall only. (See Illustrations below.)

* = Use Factory Drilled installation holes if present.

** = For light gauge steel framing, use #10 self-drilling/self-tapping screws; For concrete or masonry, use 3/16" masonry screws with 1-1/4" min. embedment. Install hole plugs after driving screws.

Install hole plugs after driving screws, (No plugs on Direct Set units).

Clip Anchor Method Only: Slide clips into the frame groove and locate per the anchor spacing instructions. Use a small piece of flashing tape to hold the clips in place.



Casement***

Double-Hung

Sliding Window

Single-Hung

Direct Set****

Pilot Hole Locations and Sizes

***If an Interior Frame Cover has a "Quick Release Band" around the cover; pull the band to help remove the cover.

****Use putty knife; insert where indicated and slide cover to interior.



FLUSH FLANGE AND BRICKMOULD FRAME WINDOW ANCHOR INSTRUCTIONS (CONT.)

Note: Standard performance only. Additional anchoring may be required for performance upgrade, impact-resistant products or to comply with local building code requirements.

ENCOMPASS BY PELLA® / PELLA® 150 SERIES / PELLA® 250 SERIES FLUSH FLANGE FRAME ANCHOR SPACING INSTRUCTIONS

Product		Edge Spacing (E)	Max. Intermediate Spacing (S)	First Mullion Anchor (M1)	Second Mullion Anchor (M2)	Fastener Wood***	Special Notes
Encompass by Pella / Pella 150 Series	Sliding Window (East and West)	6"	16"	3" / centered	8" / none	#8 x 1-1/4" Pan Head (provided)	Use M1 and M2 spacing for screws at head of meeting rail. Center 1 clip below the meeting rail.
	Single-Hung (West)	6"	16"	3"	6"	#8 x 2-1/2" Pan Head (provided)	Use M1 and M2 spacing for screws at the head only with mullions.
	Single- and Double-Hung (East)	Factory Pre-Drilled**		4"	8"	#10 x 2" Pan Head (provided)	High Performance DH: (3) #8 x 2" jamb frame screws, 4" apart at checkrails. Use (4) #8 x 2" screws at head mullion ends and 4 clips at sill mullion ends 3" and 6" from mullion.
	Casement/Awning and Fixed	4"**	16"**	4"	none	#8 x 3" Pan Head (provided)	Use clips at the sill at mullions and centered under fixed casements in 3-wide combinations.
250 Series	DH/SH (single units)	Factory Pre-Drilled**		---	---	#8 x 3" Pan Head (provided)	
	DH / SH / FX	4"	16" **	3"	6"	#8 x 3" Pan Head (provided)	Use M1 and M2 spacing for screws at head and clips at sill with mullions only.
	SW	4"	16"	---	6"	#8 x 3" Pan Head (provided)	
	CM/AW	Factory pre-drilled holes in Jamb and Head, clips at sill 4" Edge Spacing and 12" Max. Spacing		4"	8"	#10 x 2" Pan Head (provided)	Use M1 and M2 spacing for screws at head and clips at sill with mullions only.
	FX CM/AW	Clip only 4" Edge Spacing and 12" Max. Spacing		4"	8"		

All venting products: Head and sill anchors are required on composites only.

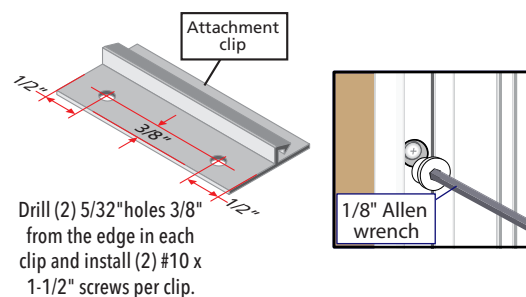
* Use Factory Drilled installation holes if present.

** For DH & SH units >62" tall add 2 screws per jamb, midway between top and bottom pre-drilled holes.

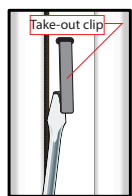
*** For light gauge steel framing, use #10 self-drilling/self-tapping screws; for concrete or masonry, use 3/16" masonry screws with 1-1/4" minimum embedment.

Install hole plugs/caps after driving screws. Replace all covers, fillers and tracks removed earlier.

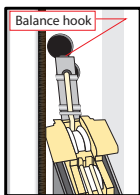
ENCOMPASS BY PELLA / PELLA 150 SERIES



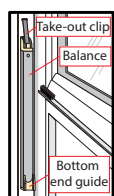
Single Hung (West)



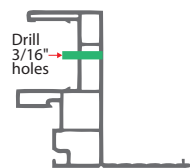
Before drilling jamb installation holes, pull out the bottom of the take-out clip on each jamb.



Separate the balances from the take out clips by holding them at top and bottom and pushing down 1". Tilt the top of the balance away from the frame and lift the hook out of the frame.

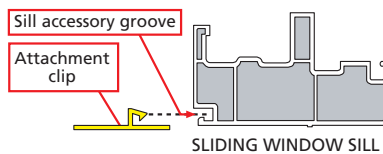


Raise the sash until the balance engages the take-out clips. Slide the sash all the way to one side and pull out the opposite side. Carefully set the sash aside.

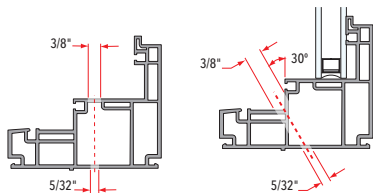


Single Wall Flush Flange Venting Windows

PILOT HOLE LOCATIONS AND SIZES

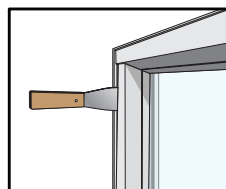


Open venting windows to access screw holes. Loosen the tie bar guides and remove the tie bar to access screw holes (if necessary).



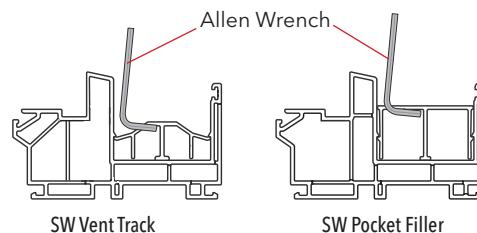
Venting Window

West Fixed Window



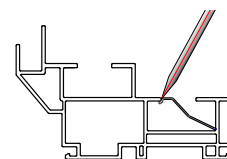
Remove fixed window glazing beads before drilling installation holes. (West)

250 SERIES



SW Vent Track

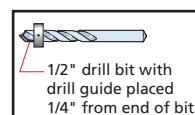
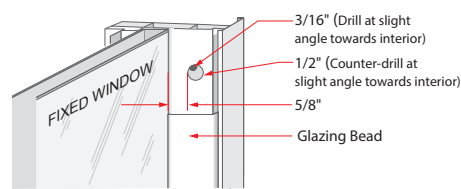
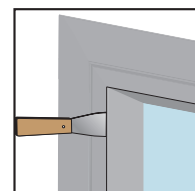
SW Pocket Filler



Pocket Cover Removal

ENCOMPASS BY PELLA / PELLA 150 SERIES

Fixed Window





Interior Sealant Instructions

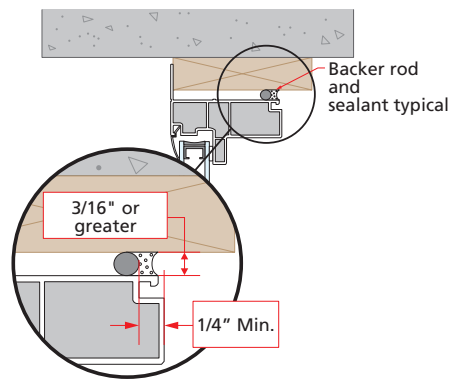
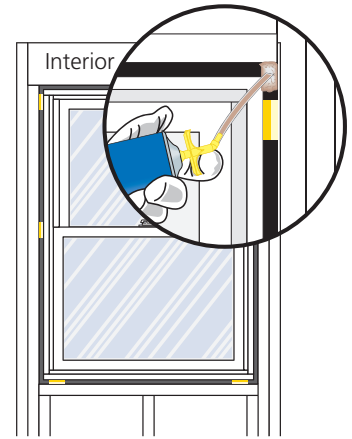
CAUTION: Continuous backer rod (as necessary) and a high quality, low-odor interior sealant such as Pella Window and Door Installation Sealant (or equivalent) is recommended for commercial or high performance installations to create the continuous interior seal. Follow the directions on the cartridge. For standard performance or products with factory applied jamb extensions, use low pressure polyurethane insulating foams. Follow the directions on the can. Do not use high pressure or latex foams. Fiberglass batt or similar insulation is not recommended as it can absorb water and does not act as an air seal.

- Insert the nozzle or straw between the rough opening and window frame. This can be done from the interior or exterior.
- Place a 1" deep bead of foam approx. 1" from the interior of the frame to allow for expansion. DO NOT fill the entire depth of the rough opening cavity.

NOTE: Apply foam between the frame and rough opening, NOT between jamb extensions and the rough opening.

- Re-Check window operation and remove remaining shipping spacers after foam installation. Excess foam may be removed with a serrated knife after it cures.
- To ensure a continuous interior seal, apply sealant over or around any shims or clips interrupting the foam seal.

Use sealant instead of foam at all 4 sides on the interior of 1/2" flange vinyl windows installed in masonry construction with pre-cast sills. Add backer rod if the gap exceeds 3/16".



Exterior Sealant Instructions

CAUTION: Use a high quality, multi-purpose exterior sealant such as Pella Window and Door Installation Sealant. Follow the directions on the cartridge.

Flush Flange Windows

Place a corner bead of sealant on the top, sides and bottom of the window along the edge of the flush flange where it meets the stucco. Leave a 2" gap in the sealant bead at the bottom below the weep hole location in the existing aluminum frame.

Brickmould Windows

If the space between the new window brickmould and the opening is less than 1/4", go to step (B).

- Insert backer rod 3/8" deep in the space around the window. Backer rod adds shape and controls the depth of the sealant line.
- Apply a continuous bead of sealant to the entire perimeter of the window. Do not block weep holes or weep hoods with sealant.
- Shape, tool and clean excess sealant. When finished, the sealant should be the shape of an hourglass.

