

# Field Mullion Assembly of Vinyl Sliding Patio Door to Sidelights and Transoms

03/2026-Current

**Note:** Mull instructions apply specifically to vinyl units with a 5-15/16" frame depth.

**IMPORTANT:** Read this entire instruction prior to attempting the process.

The processes described in this instruction were developed and tested for use with vinyl door combinations. Mulling products together that fall outside these parameters will void the Limited Warranty. Determining the appropriate mulling process is the responsibility of you, your architect, or building professional.

## Parameters:

- Only welded frame doors are to be mulled.
- Only mull door sidelights or door transoms to sliding doors. Do not attempt to join 3-1/4" frame depth windows to sliding doors.
- Mull must span the full width or height of the product (only 2-way joints). No 3-way or 4-way joints.
- Nail fin and Block Frame can be mulled. 1-13/16" Flush Flange, Integral 5/8" Flange, and Nail Fin with J-Channel Flange cannot be mulled.
- The length of any horizontal mull may not exceed 96", the length of any vertical mull may not exceed 107-1/2".

## You will need to supply:

- High quality exterior grade polyurethane sealant



## Mull Kit Components:

- Exterior cover
- Interior cover
- #10 x 1-1/4" pan head Phillips screws (Qty 4)
- Color matched foil backed tape

## Tools required:

- Tape measure
- Sealant gun
- Utility knife
- Rubber mallet
- 1" wide wood chisel
- Drill with 3/8" bit
- Coping saw
- Oscillating saw



**REMEMBER TO USE APPROPRIATE PERSONAL PROTECTIVE EQUIPMENT**

# 1 Preparing Doors, Sidelights & Transoms for Mulling:

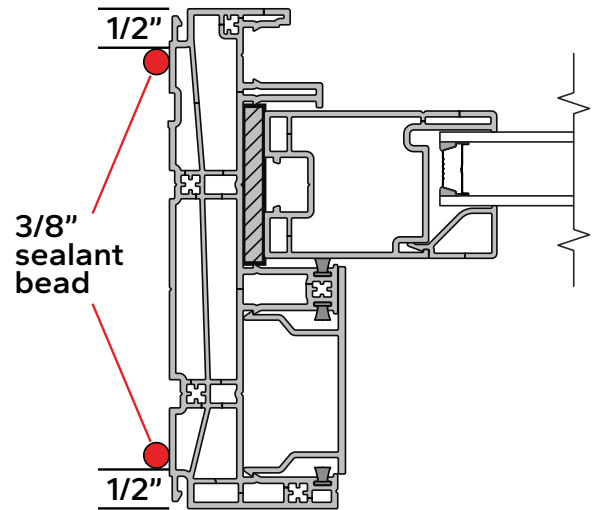
**NOTE:** Before starting, verify the products when mulled together will fit the rough opening.

- Position the door and sidelight or transom** as they will be assembled with the exterior side up. Lay the products, interior surface down on a firm, clean flat surface.
- Determine which surfaces of the products will be mulled together.**
- If needed, remove the fin from the surfaces to be mulled.** Use an oscillating saw with a sharp new blade to cut the fin from the frame.
- If needed, use the saw to go back and trim any excess fin** so the surface is flat. Be careful to not gouge the frame.



# 1 Preparing Doors, Sidelights & Transoms for Mulling (continued):

- E. Apply 2 beads of sealant approximately 3/8" wide, 1/2" from the interior and 1/2" from the exterior of the door frame.



## 2 Mulling the Frames Together, Install Exterior Mullion Cover:

*Two or more people will be required for the following steps.*

- A. With the units positioned close together, align the frames and push them together. Use clamps, as necessary.



- B. Place 2 six-inch (6") lines of sealant on each end of the mullion joint. One line of sealant goes in each of the unit accessory grooves. Also place sealant on each end between each unit down to the fin.

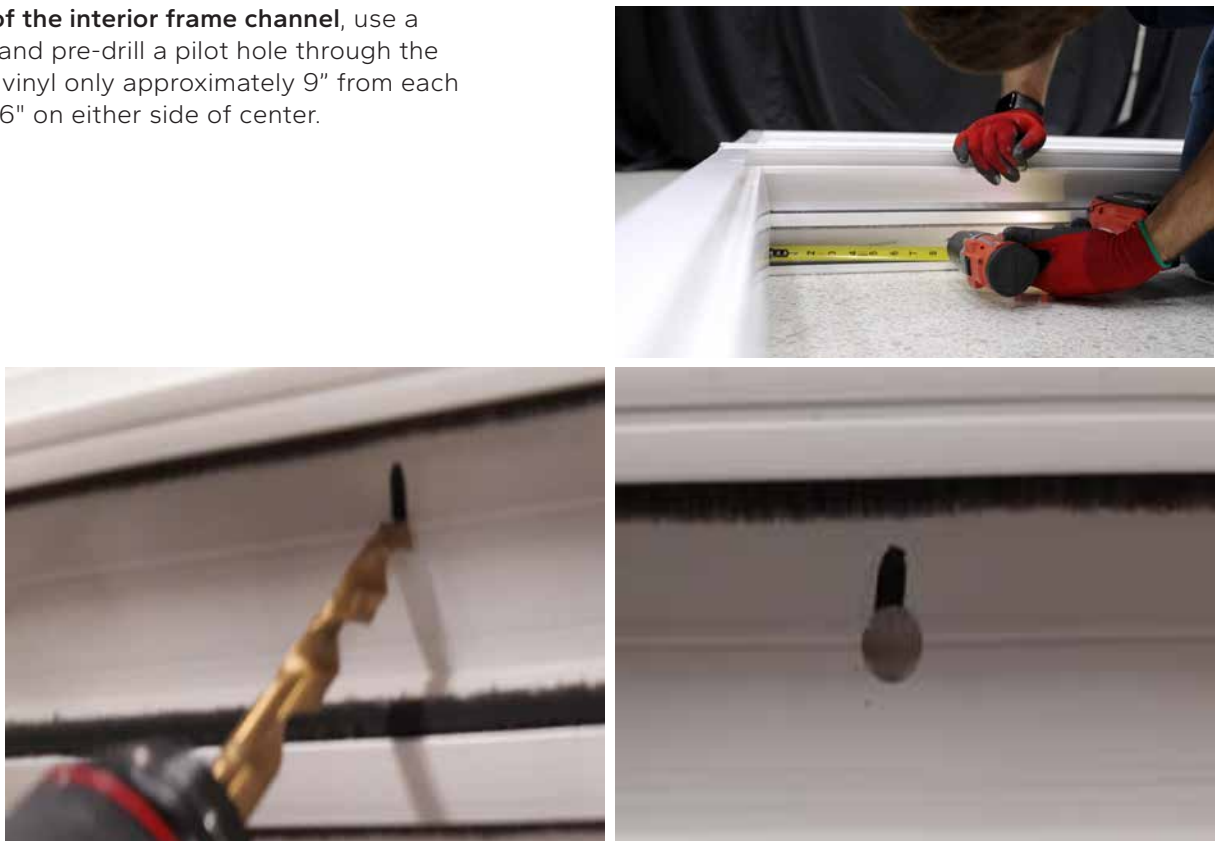


## 2 Mulling the Frames Together, Install Exterior Mullion Cover (continued):

- C. **Position the mullion cover over the mullion joint**, beginning on one end, use a rubber mallet to drive the legs of the mullion cover into the accessory grooves of the products. If needed, trim the end of the mull cover.

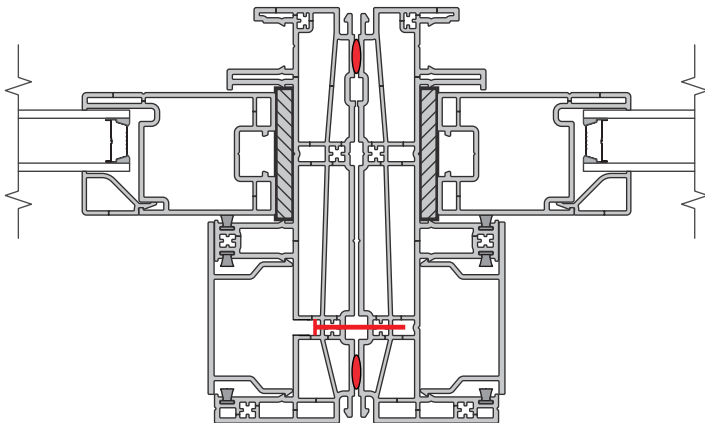


- D. **On the line of the interior frame channel**, use a 3/8" drill bit and pre-drill a pilot hole through the first layer of vinyl only approximately 9" from each corner and 16" on either side of center.



## 2 Mulling the Frames Together, Install Exterior Mullion Cover (continued):

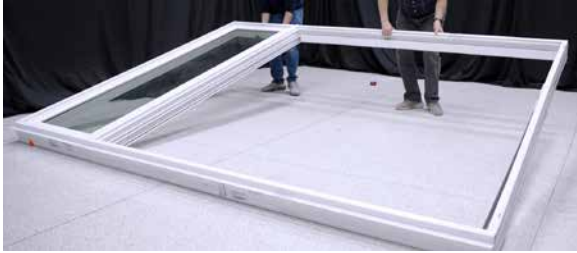
E. Install a #10 x 1-1/4" screws in each pre-drilled hole.



# 3 Install the Interior Mullion Cover:

*Two or more people will be required for the following steps.*

A. Carefully flip the products over so the interior side is up.



B. Place 2 six-inch (6") lines of sealant on each end of the mullion joint. One line of sealant goes in each of the unit accessory grooves.



C. Position the mullion cover over the mullion joint, beginning on one end, use a rubber mallet to drive the legs of the mullion cover into the accessory grooves of the products.

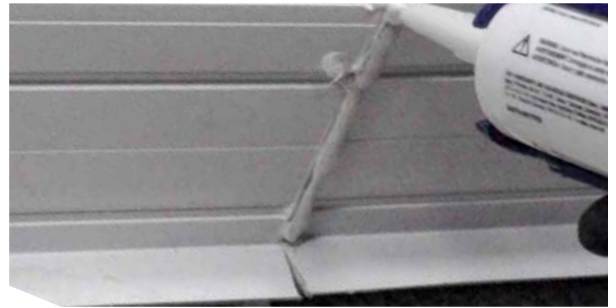
If needed, trim the end of the mull cover.



### 3 Install the Interior Mullion Cover (continued):

- D. Place sealant on each combination end at the joint between each unit down to the fin.

Units with no fin, the sealant is to cover the entire outside edge of the frame.



- E. Apply either the provided color matched foil backed tape or equivalent over each mullion joint. If applicable, cover each fin joint.

**Products with fin:** Begin 1/8" from the interior face of the product, cover top of the product to the inside surface of the fin; cover the interior and exterior of the fin. Cut the tape 1/4" from the exterior of the frame.

**Products with no fin:** Begin 1/8" from the interior face of the product; cover the complete mullion joint and end 1/8" from the exterior face of the combination.

