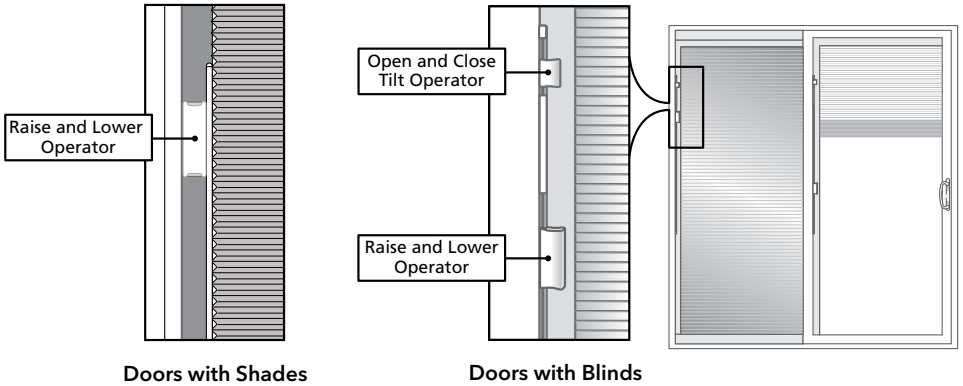




INSTALLATION INSTRUCTION - INSTRUCCIONES DE INSTALACION VINYL PATIO DOOR BLIND AND SHADE OPERATION GUIDELINES

Veá el dorso para el español.

Please read and follow these simple guidelines **BEFORE** operating the blinds/shades.



Doors with Shades

Doors with Blinds

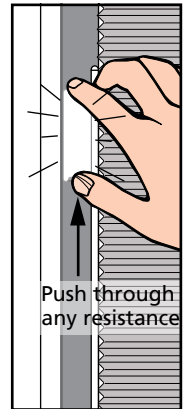
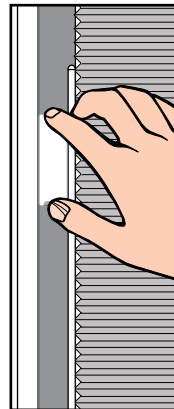
BLINDS OR SHADE BETWEEN-GLASS OPERATION

A. Blinds or shades in the raised and open position. Before operating the blind, carefully remove the foam blocking above the Raise and Lower Operator.

B. **Move the operator(s) up and down in a SLOW and STEADY motion.** The blind/shade operator system consists of a set of handle magnets and another set of magnets inside the glass assembly. The two magnet sets must be properly aligned or the system will not have enough strength for reliable operation. Moving the handle abruptly can cause the magnets to be disengaged, leaving the blinds unresponsive. If a handle becomes disengaged from the operator and remains attached to the track; perform the following steps:

C. Raise the handle to the top of the track so the blind/shade goes down to the completely lowered position. Push through any resistance near the top until the handle meets the stop at the top of the track. This may reset the handle for proper blind/shade raise and lower operation.

Grasp handle as shown



Note: An audible “pop” when pushing through the resistance is an indication the handle magnets are back in alignment with the blind/shade.

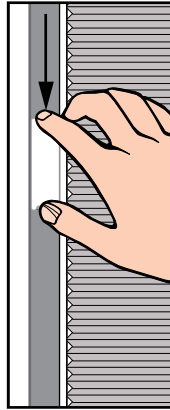
D. Test to confirm the handle is engaged; **Slowly** operate the handle up and down over the full range of motion. If the handle stays engaged while completely raising and lowering the blind or shade, the process is complete. If handle disengages, proceed to steps E - G.

BLINDS OR SHADE BETWEEN-GLASS OPERATION (CONTINUED)

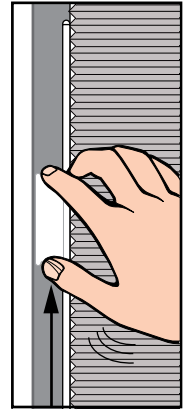
E. Raise the handle to the top of the track and then very slowly lower the handle; when the blind/shade is raised approximately 1/3 to 1/2 of the way up, the handle will disengage (come loose from the magnets, which is expected at this point).

F. When the handle disengages; use a very quick, sharp, short motion to move the handle up (approximately 6") until a popping sound is heard indicating the magnets have re-engaged. **Do not let the handle hit the top track stop while making the quick, sharp motion.** At this point the handle will be re-engaged or the handle will be above the magnets. Move the handle up until it reaches the top track stop.

Grasp handle
as shown



Quick, sharp,
short motion
– move the handle up.

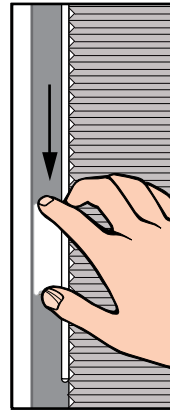


Push through
any resistance

G. Now gently and **slowly** move the handle completely down the track to raise the blind/shade all the way, (push through any resistance near the bottom of the track), continue moving the handle down until it meets the lower stop.

Note: When pushing through the resistance near the lower stop, you may feel, see and hear the handle re-engage the magnets.

Grasp handle
as shown



Push through
any resistance

H. After the handle is engaged, slowly operate the handle up and down over the full range of motion.

I. Repeat E- H as needed until handle is re-engaged.

J. If the blind does not completely lower on one side, using the tilt operator, ensure the slats are in the open position, then raise and slower the blind.

